

Isuzu steering shaft update



Figure 1



Figure 2



Figure 3



Figure 4



Figure 5

Isuzu steering shaft update

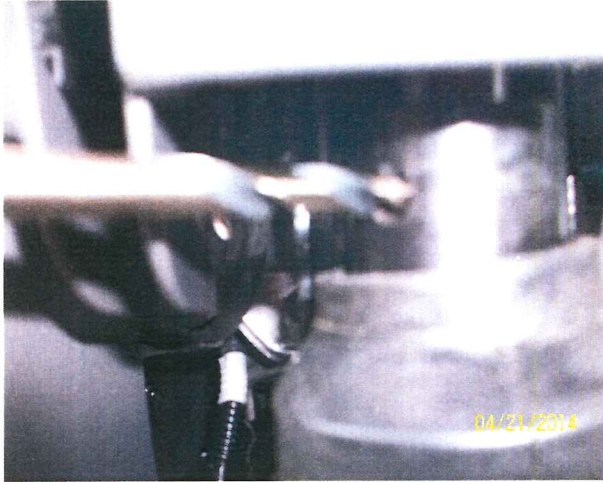


Figure 6

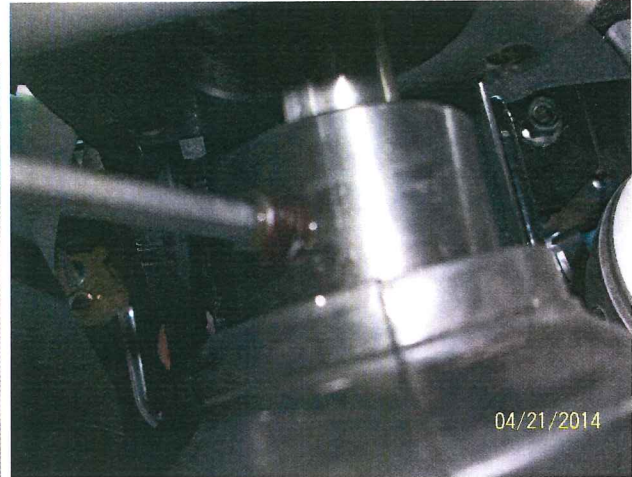


Figure 7



Figure 8

Park equipment on a level surface, set parking brake and chock wheels. Remove floor mat from truck and pull back floor covering exposing the (4) t-25 torque screws attaching lower steering column cover to floor. Remove the 4 screws and save for reassembly, see figure 1. Slide rubber cover down exposing steering shaft collar at left gearbox, remove and discard the (top) 5/32 set screw. Slide collar off of gear box (lightly tap collar using a hammer and a large drift punch to ease removal), see figure 2. Slide lower steering column cover over steering shaft, mark steering shaft at slip portion of shaft sections to be removed, see figure 3. Separate steering shaft and secure collar in a shop vise with the open end of the collar facing up. Center punch collar in the same spot as the existing set screw 180 degrees around collar, (should be 1/2 inch down from top of collar and exactly straight across from existing set screw). Using the supplied 1/8 inch drill bit drill all the way through collar. Using the supplied G bit drill through the same hole. Using the supplied 5/16-18 tap, tap threads into the collar, see figure 4. Remove from vise and reinstall steering shaft into slip shaft on truck, lining up the 2 marks made during disassembly. Slide lower steering column cover over steering shaft and secure column cover with the (4) t-25 torque screws. Make sure key way in gear box is still properly seated and slide steering shaft back up onto gear

Isuzu steering shaft update

box shaft, (using a large drift punch and hammer lightly tap collar to seat collar all the way up on gear box shaft) see figure 5. Start engine in order to rotate steering shaft for better access to set screw holes, using the supplied $\frac{1}{4}$ drill bit center the existing threaded set screw hole in collar and drill $\frac{1}{8}$ inch deep hole into gear box shaft. Rotate steering wheel 180 degrees and drill $\frac{1}{8}$ deep hole in through 2nd set screw hole, see figure 6. Fully coat all threads of both set screws from kit with supplied lock tight. Install both set screws and torque to 12 ft lbs, see figure 7. Reposition floor covering around steering column cover and reinstall floor mat as in figure 8. Turn steering wheel from stop to stop about 4-5 times and recheck torque on set screws.