

SAFETY ADVISORY # 14-217

Aerolite and Denali 12V Breaker Wiring

Keystone RV Company is conducting a voluntary **RECALL** notification campaign in accordance with the National Traffic and Motor Vehicle Safety Act. It has been decided the wiring to the 12V breakers located by the battery may not be connected to the protected terminal of the breaker. If this condition exists it will lead to an increased risk of fire if an electrical short should occur on the unprotected circuit.

Models Included: 2014 - 2015 Dutchmen Aerolite and Denali Travel Trailers and Fifth Wheels

Serial Number Ranges:

2014 Aerolite EP633379 - EP633428, EP910001 - EP910251

2015 Aerolite FP910056 – FP910403

2014 Denali EP633347 - EP633483, EP940000 - EP940376

2015 Denali FP940000 – FP940385

Parts Required: No parts required

Tools Required: - 3/8" Wrench

REPAIR INSTRUCTIONS

ONE: Reposition wire terminals

Step 1 Locate and inspect the resettable breakers tied directly to the battery. Verify all wires connected to the to the output side of the breaker have circuit protection as described in step 2. There are multiple variations of the breaker set up. Use Fig. 1 as a reference.

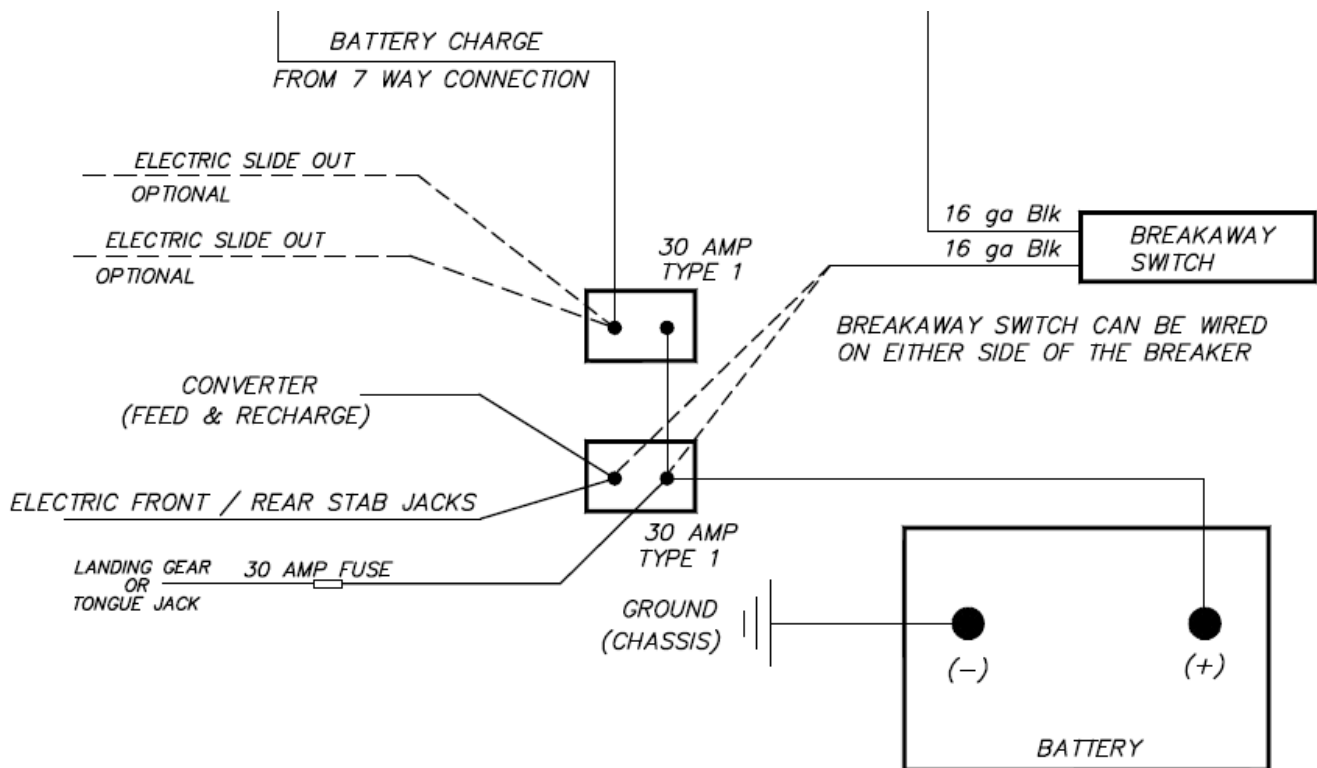


Fig. 1

Step 2 Use the following rules to verify the circuit breakers are correctly wired. Make any corrections as necessary so all wiring has proper circuit protection.

1. The copper lug of the resettable breaker is the input side; the silver lug is the output side.
2. All 14 Gauge wires connected to the input side of a resettable breaker must have a 15 Amp inline fuse.
3. All 12 Gauge wires connected to the input side of a resettable breaker must have a 20 amp inline fuse.
4. All 10 Gauge wires connected to the input side of a resettable breaker must have a 30 amp inline fuse.
5. Wires connected to the output side of a 50 amp breaker must be a minimum of 6 Gauge, or have a correctly rated inline fuse before the load.
6. Wires connected to the output side of a 30 amp breaker must be a minimum of 10 Gauge, or have a correctly rated inline fuse before the load.
7. The breakaway wire must be connected to the first breaker inline from the battery.
8. A maximum of 4 wires can be connected to the output side of a resettable breaker.

TWO:

WARRANTY REIMBURSEMENT

INSPECTION ONLY

Submit the claim on Key Express using **Flat Rate Code # 7221742F** with **Safety Advisory # 14-217** noted in the customer complaint section of the form. The amount of time authorized for this repair is 0.3 hours.

INSPECTION AND REWIRE

Submit the claim on Key Express using **Flat Rate Code # 7221742C** with **Safety Advisory # 14-217** noted in the customer complaint section of the form. The amount of time authorized for this repair is 0.5 hours.

Please call Customer Service at **(855) 382-4100** if you have any questions.