

October 9, 2014

BTB 00179-00238 REV1 (1410)

Noncompliance Recall: TLX Certification Label

Supersedes 14-036, dated September 27, 2014, to revise the information highlighted in **yellow**.

AFFECTED VEHICLES

Year	Model	Trim	VIN Range
2015	TLX	V6 AWD	Check the iN VIN status for eligibility

REVISION SUMMARY

Under PARTS INFORMATION, a Helm reorder part number was added.

BACKGROUND

The vehicle certification label on the driver's doorjamb may have incorrect vehicle weight. This would cause the vehicle to be noncompliant with Title 49 of the Code of Federal Regulations, Part 567, "Certification."

CLIENT NOTIFICATION

Owners of affected vehicles will receive a notification of this campaign.

Do an iN VIN status inquiry to make sure the vehicle is shown as eligible.

Some vehicles affected by this campaign may be in your new or used vehicle inventory. **According to Federal law, those vehicles cannot be sold or leased until the correction sticker is applied.**

CORRECTIVE ACTION

Apply a correction sticker over lines 1, 2, and 3 of the certification label on the driver's doorjamb.

PARTS INFORMATION

Your service manager was sent enough correction stickers to update all affected vehicles in your new and assigned vehicle inventory.

If you need more correction stickers, order the stickers from Helm using the applicable reorder number.

- For **09/2014 production**, use reorder number Y1026
- For **08/2014 production**, use reorder number Y1027

CLIENT INFORMATION: The information in this bulletin is intended for use only by skilled technicians who have the proper tools, equipment, and training to correctly and safely maintain your vehicle. These procedures should not be attempted by "do-it-yourselfers," and you should not assume this bulletin applies to your vehicle, or that your vehicle has the condition described. To determine whether this information applies, contact an authorized Acura automobile dealer.

WARRANTY CLAIM INFORMATION

The normal warranty applies.

Operation Number	Description	Flat Rate Time	Template ID	Failed Part Number
848501	Apply a correction sticker to the certification label on the driver's door jamb.	0.2 hr	14-036N	42762-TZ3-A50

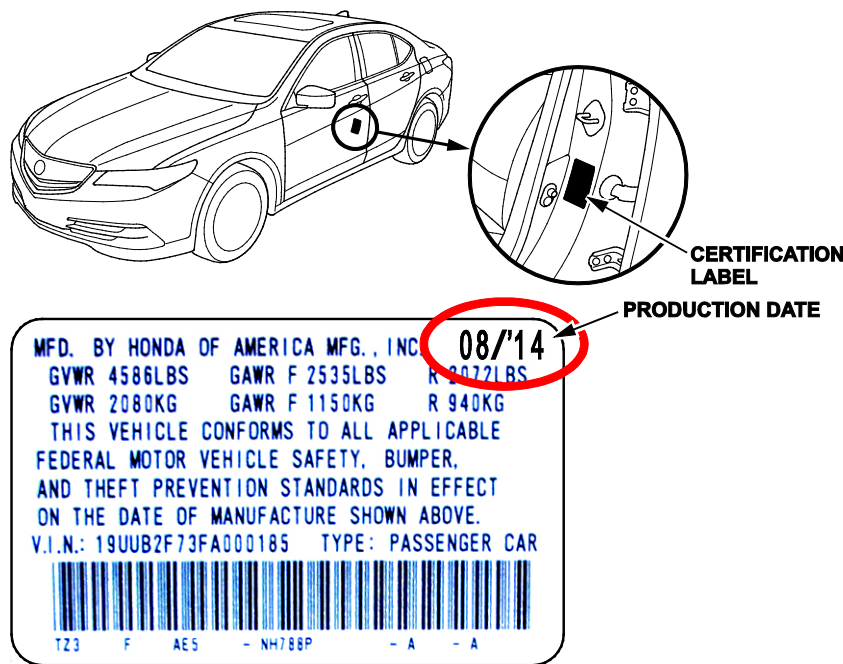
Defect Code: 5YC00

Symptom Code: JK600

Skill Level: Repair Technician

REPAIR PROCEDURE

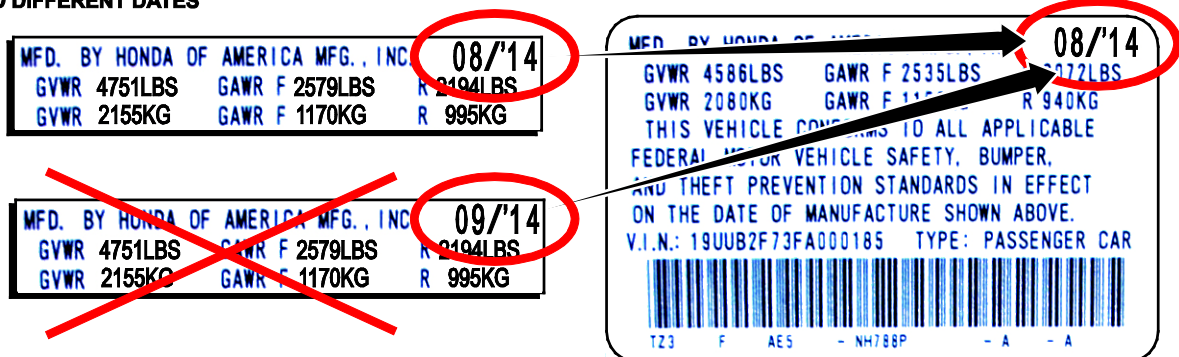
- Using alcohol and a clean shop towel, clean the certification label on the driver's doorjamb. Allow the alcohol to dry.



- Select the proper correction sticker option because there are two correction sticker options involved in this recall. One has a manufacturing date of 8/14 and the other is 9/14. **You must put the correction sticker with the same production date as the certification label.**

TWO DIFFERENT CORRECTION STICKERS WITH TWO DIFFERENT DATES

Match the production dates.



3. Peel off the backing from the correction sticker, and apply it to the certification label in the exact position shown below. Press the correction sticker firmly to make sure it sticks.

