



# Recall Campaign

NHTSA#: 14V-585

TC#: 2014-418

Job Code: 9901221

Flat Rate: 0.5

**REQUIRES PARTS TO BE ORDERED FROM Jayco for every unit.**

### ACTION REQUIRED:

Replace Kitchen Window to provide proper venting for gas range.

### MODELS / UNITS:

2015 Jayco Jay Flight SLX Travel Trailer

F17V 264BHW 0050-0201

F17W 267BHSW 0051-0079

### KIT CONTENTS

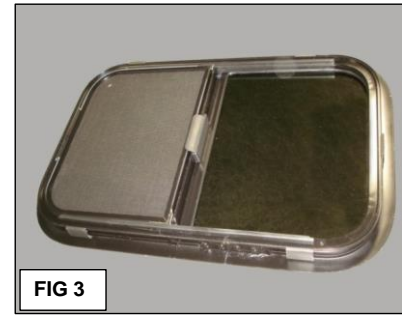
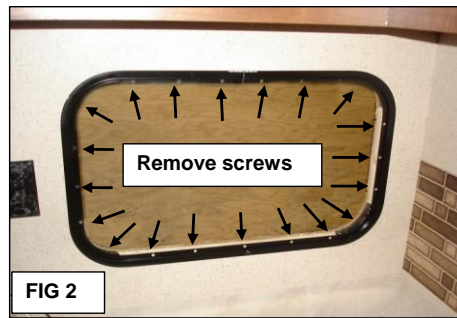
**Note: Kit can only be ordered using the order form included with this bulletin.**

8ft Window Seal  
1 24x15 Window w horizontal slider

### TOOLS/MATERIAL REQ.:

Screw gun with a #2 square drive bit

## INSTRUCTIONS



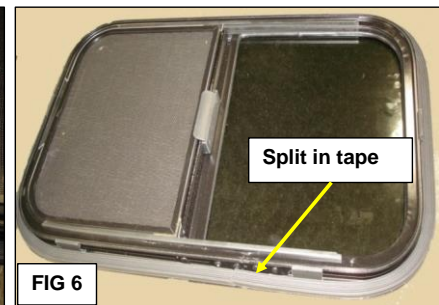
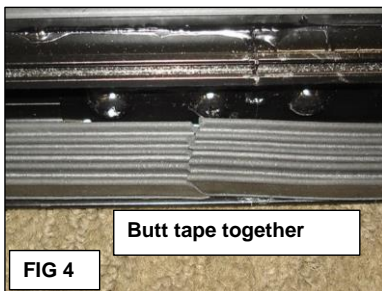
1. Existing window over the kitchen sink is a solid window (Fig 1).

Remove all the screws from the trim ring on the inside of the window (Fig 2) Save the screws for re-use.

Remove the solid window from the outside of the trailer. Trim ring will be re-used on slider window.

**DO NOT RETURN THE SOLID WINDOW TO JAYCO**

The replacement window is a side slider style with a screen the same size as the solid one being removed (Fig 3).

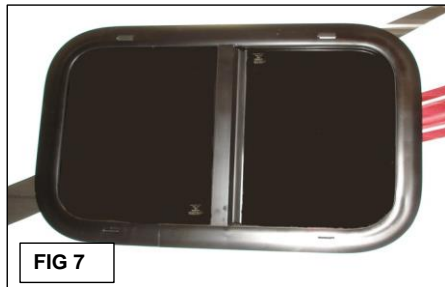


2. Peel paper backer off the foam ribbed tape and install tape around the perimeter of the new window. (Fig 4, 5 & 6)

Begin applying the ribbed tape at the center bottom edge of the window (Fig 4).

Angle cut the tape which allows the two pieces to butt up against each other and lay flat with no gap. (Fig 4)

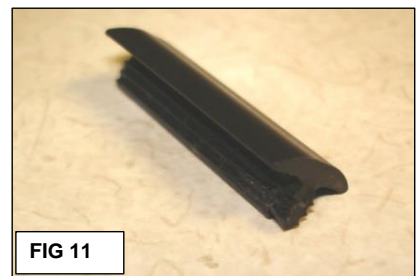
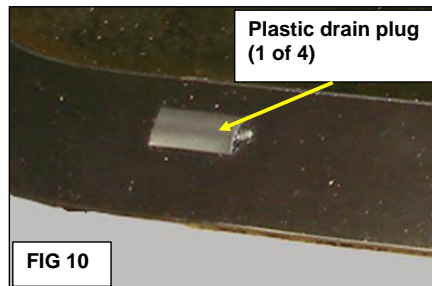
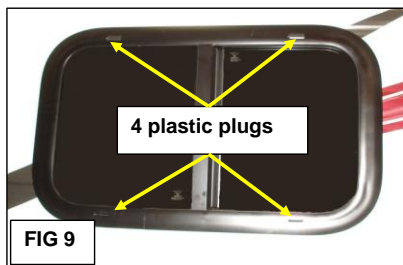
**(The window will be installed with the screen toward the rear of the trailer)**



3. Install the slider window in the trailer opening outside the trailer where the solid window was located (**Fig 7**).

**Screen half of the window goes towards the rear of the trailer.**

Inside of the trailer install the same trim ring from the solid window and secure it using the screws removed previously (**Fig 8**)



4. There are 4 plastic drain plugs on the outside of the window (2 at the top, and 2 at the bottom) (**Fig 9**).

**Fig 10 & 11** show a closeup of one of these plugs.

Pull the two lower plugs out of the window frame (**Fig 9**)