

**TECHNICAL INSTRUCTIONS**

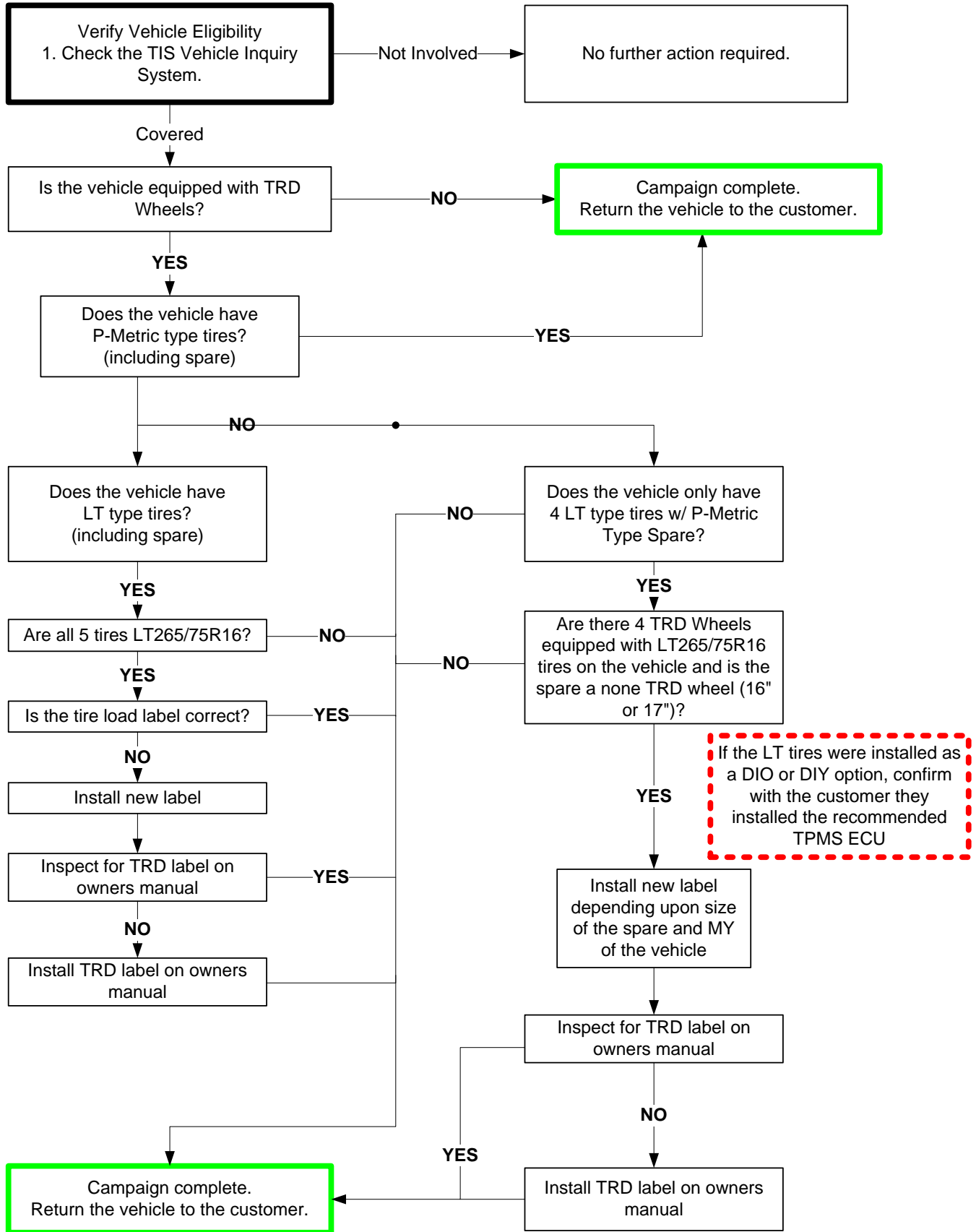
**FOR**

**NON-COMPLIANCE CAMPAIGN E0X  
LT TIRE**

**CERTAIN**

**2008 THROUGH 2014 MODEL YEAR FJ CRUISER**

# I. OPERATION FLOW CHART



## II. IDENTIFICATION OF AFFECTED VEHICLES

### A. AFFECTED VEHICLES

- This Non-Compliance Campaign **ONLY** involves certain vehicles equipped with the Toyota Racing Development (TRD) Off Road Wheels and Toyota recommended Light Truck (LT) tires.
- Verify the vehicle is equipped with the TRD Off Road Wheels before proceeding.
- Check the TIS Vehicle Inquiry System to confirm the VIN is involved in this Non-Compliance Campaign, and that the campaign has not already been completed prior to dealer shipment or by another dealer.
- **TMS warranty will not reimburse dealers for repairs conducted on vehicles that are not affected or were completed by another dealer.**

## III. PREPARATION

### A. PARTS

Part Number	Part Description	Quantity
MDC # 00602-35016	TRD Tire Pressure Label* All MY	1
MDC # 00602-35154	TRD Tire Pressure Label 16" Spare* 2012-2014 MY	1
MDC # 00602-35162	TRD Tire Pressure Label 16" Spare* 2008-2011 MY	1
MDC # 00602-35156	TRD Tire Pressure Label 17" Spare* 2012-2014 MY	1
MDC # 00602-35165	TRD Tire Pressure Label 17" Spare* 2008-2011 MY	1
MDC # 00602-35061	TRD Owner's Manual Label* All MY	1

\* The required label(s) will depend upon vehicle inspection.

**Note: The labels must be ordered through the MDC, NOT NAPO!**

### B. TOOLS

- Standard hand tools

## IV. BACKGROUND AND COMPONENTS

The above listed vehicles equipped with TRD Accessory Wheels and Toyota-recommended Light Truck (LT) tires could have an overlay label installed on the original Tire and Loading Information label with the incorrect cold tire pressure inflation value for the spare tire. If these wheels and tires were installed on a vehicle prior to first retail sale with this incorrect label, the vehicle fails to meet the requirements of Federal Motor Vehicle Safety Standard (FMVSS) 110: Tire Selection and Rims and Motor Home/Recreation Vehicle Trailer Load Carrying Capacity Information. A tire inflated to the improper tire pressure could increase the risk of a crash.

## V. WORK PROCEDURE

### A. INSPECT THE WHEELS ON THE VEHICLE

#### Covered TRD Off Road Wheels



16" x 7.5" x 10mm Wheel  
6 x 139.7mmPCD

Part Number	Finish
PTR18-35090	Black
PTR18-35090-BR	Bronze
PTR18-35090-GR	Gray

Note: the part number is located on the back of the wheel.

#### 1. INSPECT ALL 5 WHEELS ON THE VEHICLE

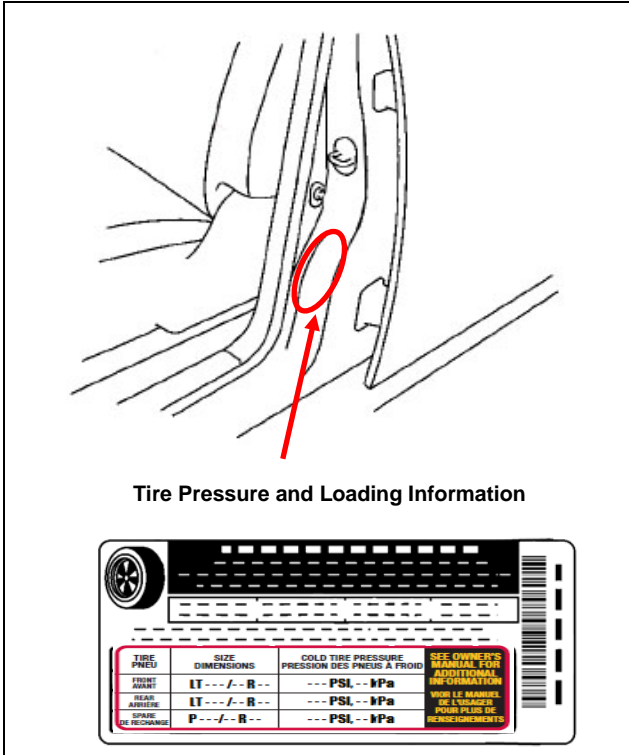
- a) Inspect all 5 wheels on the vehicle.
- b) Compare the wheels on the vehicles to the wheels shown.
- c) See chart below

5 TRD wheels	Proceed to <b>STEP B</b>
4 TRD wheels with 4 LT265/75R16 ties and a 16" or 17" spare	Proceed to <b>STEP C</b>
TRD Wheels with P-Metric Tires	Campaign Complete

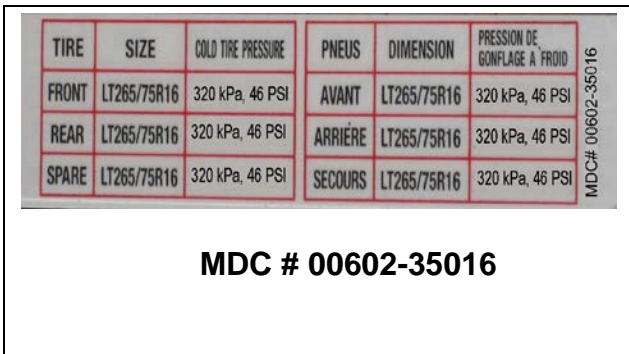
#### Note:

- The wheels shown come in different color finishes.
- There is no issue with the TRD wheel in this Non-Compliance Campaign; it is only used to easily identify vehicles that may be covered.

## B. TIRE LABEL INSPECTION 5 TRD WHEELS



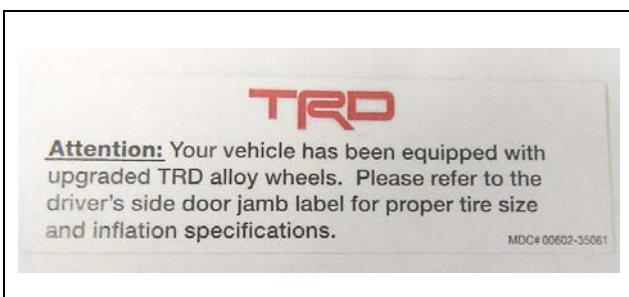
1. LOCATE THE TIRE AND LOADING INFORMATION LABEL ON THE DRIVER-SIDE B-PILLAR (DOOR JAM)
2. DOES THE **LABEL** SHOW LT TYPE TIRES FOR THE FRONT, REAR AND SPARE TIRE?
  - a) **Yes** Go to **STEP 5**
  - b) **NO** Go to **STEP 3**



3. CLEAN TIRE AND LOADING INFORMATION LABEL SO NEW LABEL WILL AFFIX PROPERLY
4. AFFIX THE NEW TRD L/T TIRE LABEL OVER CURRENT LABEL

**Note:** Do not remove old sticker as damage may occur to OE label.

5. CHECK TIRE PRESSURES (RESET TPMS 2012-2014 MY ONLY)



6. INSPECT THE OWNERS MANUAL FOR A TRD LABEL ON THE COVER
  - a) **Yes** Go to **STEP 7**
  - b) **NO** install TRD sticker on the front cover of the owner's manual.
7. **CAMPAIGN COMPLETE**

## C. TIRE LABEL INSPECTION 4 TRD WHEELS AND A 16" or 17" SPARE

### 1. INSPECT SPARE TIRE

- a) If the spare is 16" or 17" select the correct label by MY shown below.

16" Spare label 2008 – 2011 MY					
TIRE	SIZE	COLD TIRE PRESSURE	PNEU	DIMENSIONS	PRESSION DES PNEUS A FROID
FRONT	LT265/75R16	320kPa, 46PSI	AVANT	LT265/75R16	320kPa, 46PSI
REAR	LT265/75R16	320kPa, 46PSI	ARRIÈRE	LT265/75R16	320kPa, 46PSI
SPARE	P265/75R16	290kPa, 42PSI	DE SECOURS	P265/75R16	290kPa, 42PSI

**MDC # 00602-35162**

2012 – 2014 MY					
TIRE	SIZE	COLD TIRE PRESSURE	PNEU	DIMENSIONS	PRESSION DES PNEUS A FROID
FRONT	LT265/75R16	320kPa, 46PSI	AVANT	LT265/75R16	320kPa, 46PSI
REAR	LT265/75R16	320kPa, 46PSI	ARRIÈRE	LT265/75R16	320kPa, 46PSI
SPARE	P265/75R16	220kPa, 32PSI	DE SECOURS	P265/75R16	220kPa, 32PSI

**MDC # 00602-35154**

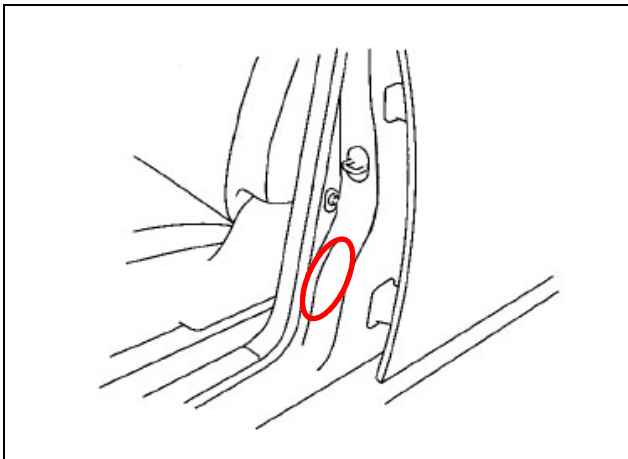
17" Spare label 2008 – 2011 MY					
TIRE	SIZE	COLD TIRE PRESSURE	PNEU	DIMENSIONS	PRESSION DES PNEUS A FROID
FRONT	LT265/75R16	320kPa, 46PSI	AVANT	LT265/75R16	320kPa, 46PSI
REAR	LT265/75R16	320kPa, 46PSI	ARRIÈRE	LT265/75R16	320kPa, 46PSI
SPARE	P265/70R17	290kPa, 42PSI	DE SECOURS	P265/70R17	290kPa, 42PSI

**MDC # 00602-35165**

2012 – 2014 MY					
TIRE	SIZE	COLD TIRE PRESSURE	PNEU	DIMENSIONS	PRESSION DES PNEUS A FROID
FRONT	LT265/75R16	320kPa, 46PSI	AVANT	LT265/75R16	320kPa, 46PSI
REAR	LT265/75R16	320kPa, 46PSI	ARRIÈRE	LT265/75R16	320kPa, 46PSI
SPARE	P265/70R17	220kPa, 32PSI	DE SECOURS	P265/70R17	220kPa, 32PSI

**MDC # 00602-35156**



2. LOCATE THE TIRE AND LOADING INFORMATION LABEL ON THE DRIVER-SIDE B-PILLAR (DOOR JAM)

3. CLEAN TIRE AND LOADING INFORMATION LABEL SO NEW LABEL WILL AFFIX PROPERLY

4. AFFIX THE NEW LABEL OVER THE CURRENT LABEL

Note: Do not remove old sticker as damage may occur to OE label.

5. CHECK TIRE PRESSURES (RESET TPMS 2012-2014 MY ONLY)

6. INSPECT THE OWNERS MANUAL FOR A TRD LABEL ON THE COVER

- a) YES Go to **STEP 7**

- b) NO install TRD sticker on the front cover of the owner's manual.

7. CAMPAIGN COMPLETE



**NOTE: IF THE LT TIRES WERE INSTALLED AS A DIO OR DIY OPTION, CONFIRM WITH THE CUSTOMER THEY INSTALLED THE RECOMMENDED TPMS ECU**

## ◀ VERIFY REPAIR QUALITY ▶

- Confirm that the new label as been installed and is not peeling
- If you have any question regarding this campaign, please contact your regional representative

Have customer sign repair order acknowledging that you have identified that the tires equipped on their vehicle do not meet Toyota recommendations and that you have identified the recommended tire specs.

### A. CAMPAIGN DESIGNATION DECODER

