

**AE03 Recall campaign - Checking lower trailing arms for rear axle and replacing them if necessary**

Model Line: **918 Spyder**

Model Year: **2015**

Concerns: **Lower trailing arms (longitudinal and transverse control arms) for rear axle**

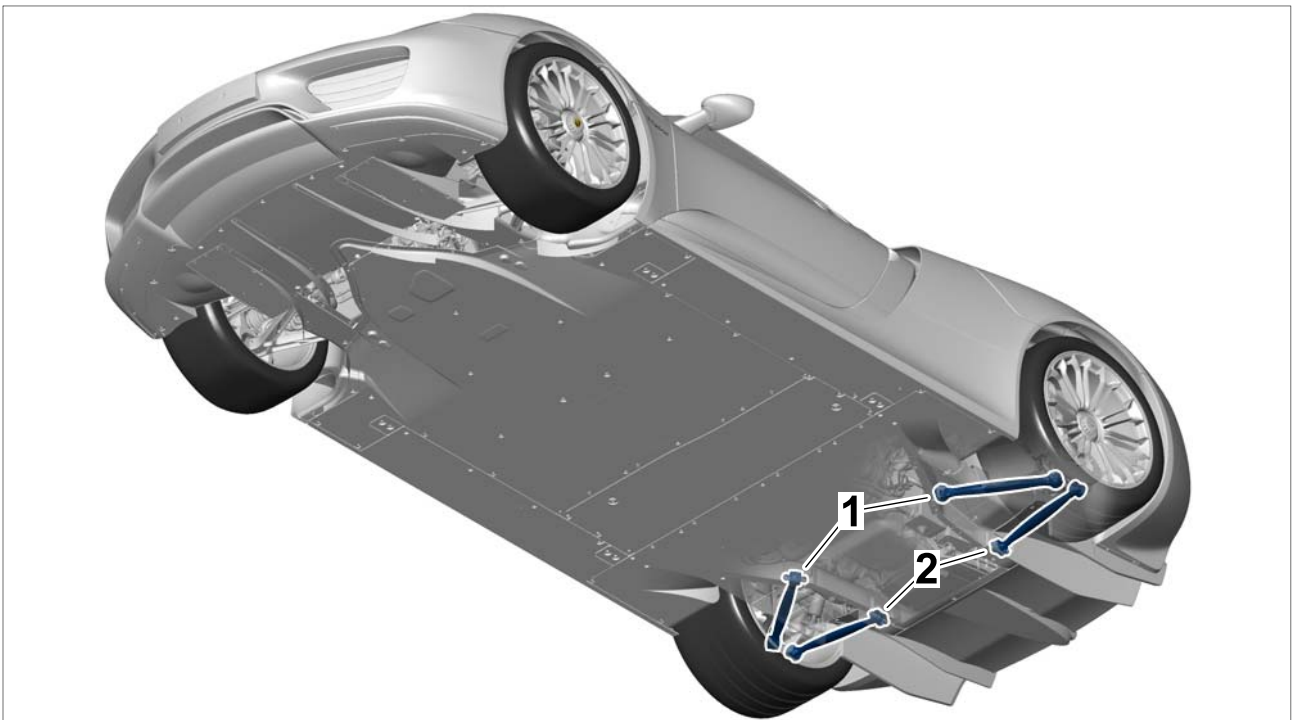
Situation: **Internal tests have shown that rear-axle longitudinal and transverse control arms from a batch that does not meet the required specifications were installed on some vehicles.**

This can result in a change in the material properties and thus reduced endurance strength.

Action Required: Check the batch numbers of the lower trailing arms for the rear axle and replace the trailing arms if necessary.

Affected Vehicles: Only the vehicles assigned to the campaign (see also PIWIS Vehicle Information).

Installation Position:



*Overview of lower trailing arms for rear axle*

- 1** – Lower longitudinal control arms for rear axle
- 2** – Lower transverse control arms for rear axle

## Checking batch numbers of lower trailing arms for rear axle

### Tools:

- **9002 - Lifting platform holders**
- **9453 - Access ramps**
- Torque wrench, 2 – 10 Nm (1.5 – 7.5 ftlb.), e.g. **V.A.G 1783 - Torque wrench, 2-10 Nm (1.5-7.5 ftlb.)**
- Torque wrench, 6 – 50 Nm (4.5 – 37 ftlb.), e.g. **V.A.G 1331 - Torque wrench, 6-50 Nm (4.5-37 ftlb.)**
- Suitable inspection mirror
- Hand lamp

### Procedure:

- 1 Raise the vehicle on a lifting platform ⇒ *Workshop Manual '4X00IN Lifting the vehicle'*.
  - 1.1 Position the vehicle between the arms of the lifting platform and push it onto the **9453 - access ramps**.
  - 1.2 Remove covers on the underbody and fit mounting plates **9002 - Lifting platform holders**, ⇒ *Workshop Manual '518119 Removing and installing jacking points'*.
  - 1.3 Jack and raise the vehicle at the mounting plates.

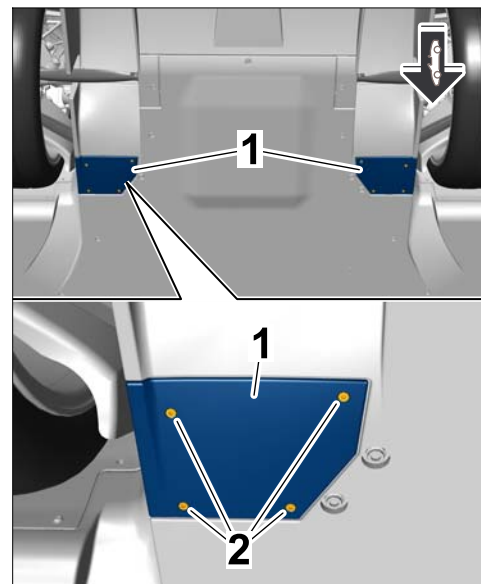


### Information

The batch numbers must be checked on both the **left and right longitudinal control arms** and on the **left and right transverse control arms**.

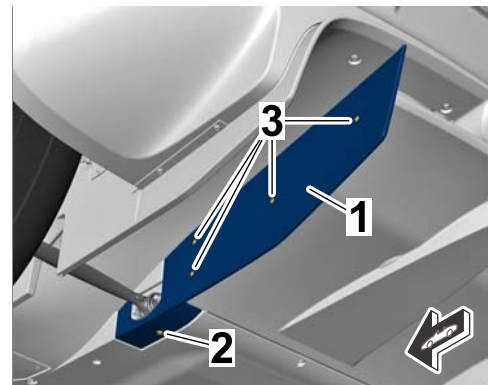
The procedure for checking the left-hand side of the vehicle is described below as an example.

- 2 Remove the cover ⇒ *Covers for assembly openings in underbody-1-* of the assembly opening in the underbody at the left and right.  
To do this, unscrew and remove the fastening screws ⇒ *Covers for assembly openings in underbody-2-* and remove the cover.



*Covers for assembly openings in underbody*

- 3 Remove the lower rear side spoiler ⇒ *Lower rear spoiler (at the sides) -1-* at the left and right side.
  - 3.1 Unscrew and remove fastening screw ⇒ *Lower rear spoiler (at the sides) -2-*.
  - 3.2 Unscrew and remove fastening screws ⇒ *Lower rear spoiler (at the sides) -3-*.
  - 3.3 Pull the spoiler ⇒ *Lower rear spoiler (at the sides) -1-* to the rear and off the underbody and remove it.



*Lower rear spoiler (at the sides)*

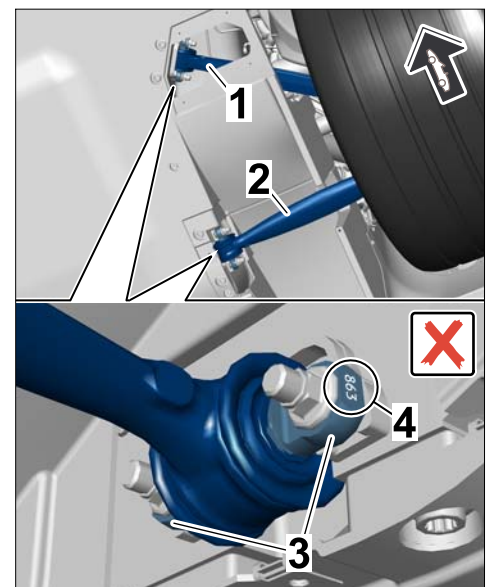


**Information**

The batch number is stamped close to the fastening points on the inner joint of each trailing arm. Depending on the installation position of the trailing arms, the batch number can be either at the front or at the rear fastening point of the respective trailing arm.

- 4 Read off and check the batch numbers of the lower trailing arms (longitudinal and transverse control arms) ⇒ *Checking batch number of the trailing arms -1, 2-* on the rear axle.  
To do this, insert an inspection mirror through the openings in the underbody, close to the fastening points ⇒ *Checking batch number of the trailing arms -3-* for the longitudinal and transverse control arms and read off the batch number ⇒ *Checking batch number of the trailing arms -4-*.

- If the **batch number of all four trailing arms** is **not 863** ⇒ continue with **Step 5**.
- If the batch number of a trailing arm is **863**, the trailing arm in question must be replaced ⇒ *Technical Information '518119 Replacing lower trailing arm (longitudinal and transverse control arm) for rear axle'*



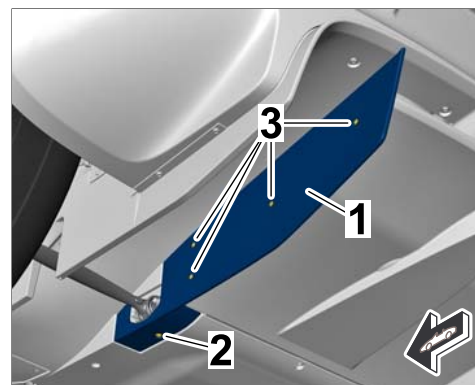
*Checking batch number of the trailing arms*

5 Install the lower rear side spoiler ⇒ *Lower rear spoiler (at the sides)* -1- at the left and right side.

5.1 Position the spoiler ⇒ *Lower rear spoiler (at the sides)* -1- in installation position on the underbody and only fit the fastening screws ⇒ *Lower rear spoiler (at the sides)* -2, 3- initially.

5.2 Tighten fastening screws ⇒ *Lower rear spoiler (at the sides)* -3-.  
**Tightening torque 5.5 Nm (4 ftlb.)**

5.3 Tighten fastening screw ⇒ *Lower rear spoiler (at the sides)* -2-.  
**Tightening torque 10 Nm (7.5 ftlb.)**



*Lower rear spoiler (at the sides)*

6 Fit the cover ⇒ *Covers for assembly openings in underbody* -1- for the assembly opening in the underbody at the left and right.

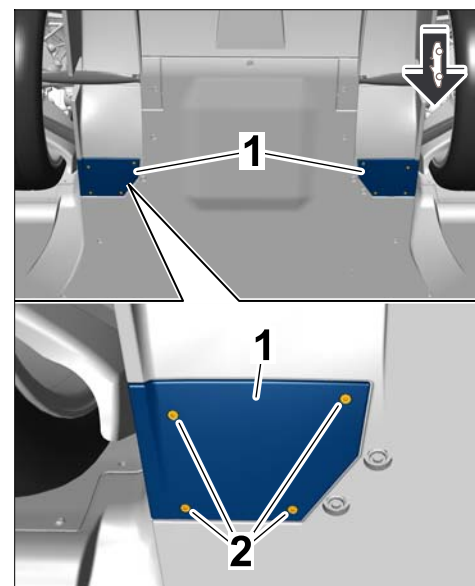
To do this, screw in and tighten the fastening screws ⇒ *Covers for assembly openings in underbody* -2-.

**Tightening torque 5.5 Nm (4 ftlb.)**

7 Lower the vehicle and remove it from the lifting platform ⇒ *Workshop Manual '4X00IN Lifting the vehicle'*.

7.1 Lower the vehicle onto the **9453 - access ramps** with the lifting platform.

7.2 Remove mounting plates **9002 - Lifting platform holders** and install the covers on the underbody ⇒ *Workshop Manual '518119 Removing and installing jacking points'*.



*Covers for assembly openings in underbody*

8 Enter the campaign in the Warranty and Maintenance booklet ⇒ **End of action required.**

### Replacing lower trailing arms (longitudinal and transverse control arms) for rear axle

Part Nos.:

Part No.	Designation – Location	Qty.
918.331.043.00	⇒ Lower longitudinal control arm for rear axle at the left/right	1 ea.*

and/or

918.331.041.00 ⇒ Lower transverse control arm for rear axle at the left/right 1 ea.\*

\* The trailing arms (longitudinal and transverse control arms) for the rear axle are identical on the left and right side. Depending on the number of trailing arms affected, either one or two longitudinal or transverse control arms must be ordered.

**The following parts are also required for each trailing arm to be replaced:**

Vehicles **without** Racetrack package (I-no. 808):

999.311.504.01 ⇒ Fit bolt, M12 x 1.5 x 77 1 ea.  
– Trailing arm to wheel carrier

**or**

Vehicles **with** Racetrack package (I-no. 808):

999.311.504.02 ⇒ Fit bolt, M12 x 1.5 x 77 1 ea.  
– Trailing arm to wheel carrier

**The following parts will also be required for each trailing arm to be replaced:**

999.084.655.01 ⇒ Hexagon nut, M12 x 1.5 1 ea.  
– Trailing arm to wheel carrier

999.084.656.01 ⇒ Hexagon nut, M10 2 ea.  
– Trailing arm to body

**The following parts are also required for each vehicle side affected:**

999.084.656.01 ⇒ Hexagon nut, M10 2 ea.  
– Brake calliper to wheel carrier

999.073.572.01 ⇒ Lens-head screw, M6 x 8 2 ea.  
– Brake disc to wheel hub

Tools:

- **9003 - Socket wrench** for central wheel lock
- **9004 - Socket wrench** for central wheel lock cover
- Torque wrench, 2 – 10 Nm (1.5 – 7.5 ftlb.), e.g. **V.A.G 1783 - Torque wrench, 2-10 Nm (1.5-7.5 ftlb.)**
- Torque wrench, 6 – 50 Nm (4.5 – 37 ftlb.), e.g. **V.A.G 1331 - Torque wrench, 6-50 Nm (4.5-37 ftlb.)**
- Torque wrench, 40 – 200 Nm (30 – 148 ftlb.), e.g. **V.A.G 1332 - Torque wrench, 40-200 Nm (30-148 ftlb.)**
- Torque wrench, 150 – 800 Nm (111 – 592 ftlb.), e.g. **V.A.G. 1601 - Torque wrench 150-800 Nm (111-592 ftlb.)**

Procedure: 1 Remove wheel on the relevant side of the vehicle ⇒ *Workshop Manual '440519 Removing and installing wheel'*.



#### Information

- **Do not open the brake hydraulic system (brake line remains connected).**

- 2 Loosen rear brake calliper from the wheel carrier and suspend it to the side in the wheel housing using a tie-wrap, for example ⇒ *Workshop Manual '474119 Removing and installing rear brake calliper'*.
- 3 Remove rear brake disc ⇒ *Workshop Manual '465419 Removing and installing rear PCCB brake disc'*.
- 4 Remove all affected **trailing arms** (longitudinal and transverse control arms) with the **batch number 863** and install new trailing arms ⇒ *Workshop Manual '421119 Removing and installing lower trailing arm'*.
- 5 Install rear brake disc ⇒ *Workshop Manual '465419 Removing and installing rear PCCB brake disc'*.
- 6 Install rear brake calliper ⇒ *Workshop Manual '474119 Removing and installing rear brake calliper'*.
- 7 Fit wheel on the relevant side of the vehicle ⇒ *Workshop Manual '440519 Removing and installing wheel'*.
- 8 Lower the vehicle and remove it from the lifting platform ⇒ *Workshop Manual '4X00IN Lifting the vehicle'*.
  - 8.1 Lower the vehicle onto the **9453 - access ramps** with the lifting platform.
  - 8.2 Remove mounting plates **9002 - Lifting platform holders** and install the covers on the underbody ⇒ *Workshop Manual '518119 Removing and installing jacking points'*.
- 9 Perform suspension alignment ⇒ *Workshop Manual '449503 Suspension alignment, complete'*.

**If the wheel position** on the rear axle **must be adjusted** during **suspension alignment**, the following parts are **also** required **for each trailing arm**:

918.331.543.11	⇒ Spacer plate, 10 mm – Rear-axle camber adjustment	1 ea.*
918.331.543.10	⇒ Spacer plate, 3 mm – Rear-axle camber adjustment	1 ea.*
999.084.656.01	⇒ Hexagon nut, M10 – Trailing arm to body	2 ea.

\* The number of spacer plates required for camber adjustment on the rear axle depends on the measured deviation between the required and actual value as well as on the spacer plates already installed on the vehicle. For detailed information, see ⇒ *Workshop Manual '449503 Suspension alignment, complete'*.



**Information**

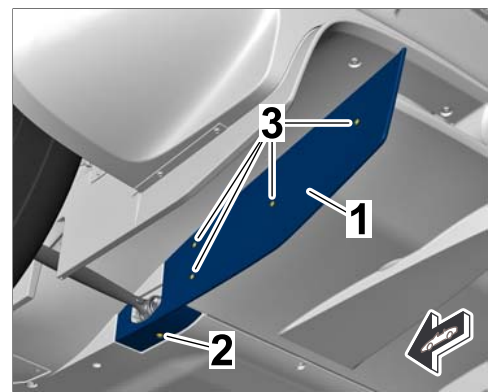
All tasks required for adjusting the chassis and parts required during chassis adjustment are **not** included in the **scope of this campaign** and must be invoiced using a separate warranty claim.

10 Install the lower rear side spoiler ⇒ *Lower rear spoiler (at the sides)*-**1**- at the left and right side.

10.1 Position the spoiler ⇒ *Lower rear spoiler (at the sides)*-**1**- in installation position on the underbody and only fit the fastening screws ⇒ *Lower rear spoiler (at the sides)*-**2, 3**- initially.

10.2 Tighten fastening screws ⇒ *Lower rear spoiler (at the sides)*-**3**-.  
**Tightening torque 5.5 Nm (4 ftlb.)**

10.3 Tighten fastening screw ⇒ *Lower rear spoiler (at the sides)*-**2**-.  
**Tightening torque 10 Nm (7.5 ftlb.)**



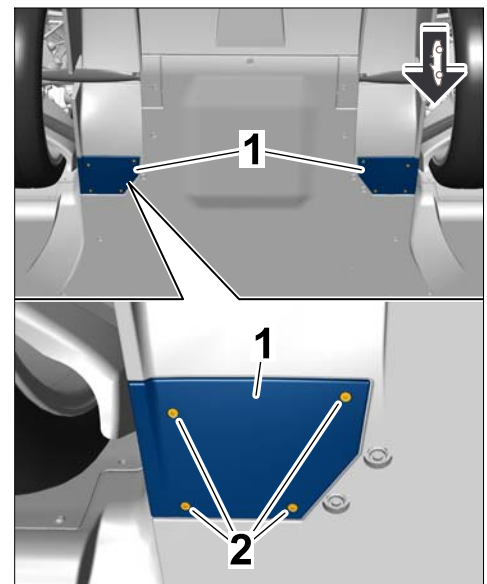
*Lower rear spoiler (at the sides)*

11 Fit the cover ⇒ *Covers for assembly openings in underbody*-**1**- for the assembly opening in the underbody at the left and right.

To do this, screw in and tighten the fastening screws ⇒ *Covers for assembly openings in underbody*-**2**-.

**Tightening torque 5.5 Nm (4 ftlb.)**

12 Enter the campaign in the Warranty and Maintenance booklet.



*Covers for assembly openings in underbody*

## Invoicing

**Information**

The working times specified below were determined specifically for carrying out this campaign and may differ from the working times published in the Labour Operation List in PIWIS.

Scope 1: Checking batch numbers of lower trailing arms for rear axle – **The trailing arms do not need to be replaced.**

**Working time:**

Checking batch numbers of lower trailing arms (longitudinal and transverse control arms) for rear axle at the left and right

Labor time: **147 TU**

Includes: Raising and lowering the vehicle  
Removing and installing covers in the underbody  
Removing and installing lower rear spoiler at the left and right

**Invoicing: ⇒ Damage code AE03 99 000, Repair code 1**

Scope 2: Checking batch numbers and replacing **one** trailing arm.

**Working time:**

Checking batch numbers and replacing one trailing arm (longitudinal or transverse control arm)

Labor time: **307 TU**

Includes: Raising and lowering the vehicle  
Removing and installing covers in the underbody  
Removing and installing lower rear side spoiler at the left and right  
Removing and installing wheel  
Loosening and securing rear brake calliper  
Removing and installing rear brake disc  
Removing and installing trailing arm  
Performing suspension alignment

**Parts required:**

918.331.043.00	Lower longitudinal control arm for rear axle at the left/right	1 ea.
----------------	--	-------

**or**

918.331.041.00	Lower transverse control arm for rear axle at the left/right	1 ea.
----------------	--	-------

**Additional parts required** for vehicles **without** Racetrack package (I-no. 808):



999.311.504.01 Fit bolt, M12 x 1.5 x 77 1 ea.

**Additional parts required** for vehicles **with** Racetrack package (I-no. 808):

999.311.504.02 Fit bolt, M12 x 1.5 x 77 1 ea.

**Additional parts required:**

999.084.655.01 Hexagon nut, M12 x 1.5 1 ea.

999.084.656.01 Hexagon nut, M10 4 ea.

999.073.572.01 Lens-head screw, M6 x 8 2 ea.

**Invoicing:** ⇒ **Damage code AE03 99 000, Repair code 2**

Scope 3: Checking batch numbers and replacing **two** trailing arms on **one side of the vehicle**.

**Working time:**

Checking batch numbers and replacing two trailing arms (longitudinal or transverse control arms) Labor time: **320 TU**

- Includes:
- Raising and lowering the vehicle
  - Removing and installing covers in the underbody
  - Removing and installing lower rear side spoiler at the left and right
  - Removing and installing wheel
  - Loosening and securing rear brake calliper
  - Removing and installing rear brake disc
  - Removing and installing trailing arm (2x)
  - Performing suspension alignment

**Parts required:**

918.331.043.00 Lower longitudinal control arm for rear axle at the left/right 1 ea.

918.331.041.00 Lower transverse control arm for rear axle at the left/right 1 ea.

**Additional parts required** for vehicles **without** Racetrack package (I-no. 808):

999.311.504.01 Fit bolt, M12 x 1.5 x 77 2 ea.

**Additional parts required** for vehicles **with** Racetrack package (I-no. 808):

999.311.504.02 Fit bolt, M12 x 1.5 x 77 2 ea.

**Additional parts required:**

999.084.655.01	Hexagon nut, M12 x 1.5	2 ea.
999.084.656.01	Hexagon nut, M10	6 ea.
999.073.572.01	Lens-head screw, M6 x 8	2 ea.

**Invoicing:** ⇒ **Damage code AE03 99 000, Repair code 2**

Scope 4: Checking batch numbers and replacing **one** trailing arm on **each side of the vehicle**.

**Working time:**

Checking batch numbers and replacing two trailing arms (longitudinal or transverse control arms) Labor time: **358 TU**

Includes:

- Raising and lowering the vehicle
- Removing and installing covers in the underbody
- Removing and installing lower rear side spoiler at the left and right
- Removing and installing wheel (2x)
- Loosening and securing rear brake calliper (2x)
- Removing and installing rear brake disc (2x)
- Removing and installing trailing arm (2x)
- Performing suspension alignment

**Parts required:**

918.331.043.00	Lower longitudinal control arm for rear axle at the left/right	1 ea.
----------------	--	-------

918.331.041.00	Lower transverse control arm for rear axle at the left/right	1 ea.
----------------	--	-------

**or**

918.331.043.00	Lower longitudinal control arm for rear axle at the left/right	2 ea.
----------------	--	-------

**or**

918.331.041.00	Lower transverse control arm for rear axle at the left/right	2 ea.
----------------	--	-------

**Additional parts required** for vehicles **without** Racetrack package (I-no. 808):

999.311.504.01	Fit bolt, M12 x 1.5 x 77	2 ea.
----------------	--------------------------	-------

**Additional parts required** for vehicles **with** Racetrack package (I-no. 808):

999.311.504.02	Fit bolt, M12 x 1.5 x 77	2 ea.
----------------	--------------------------	-------

**Additional parts required:**

999.084.655.01	Hexagon nut, M12 x 1.5	2 ea.
999.084.656.01	Hexagon nut, M10	8 ea.
999.073.572.01	Lens-head screw, M6 x 8	4 ea.

**Invoicing:** ⇒ **Damage code AE03 99 000, Repair code 2**

Scope 5: Checking batch numbers and replacing **three** trailing arms.

**Working time:**

Checking batch numbers and replacing three trailing arms (longitudinal or transverse control arms) Labor time: **371 TU**

- Includes:
- Raising and lowering the vehicle
  - Removing and installing covers in the underbody
  - Removing and installing lower rear side spoiler at the left and right
  - Removing and installing wheel (2x)
  - Loosening and securing rear brake calliper (2x)
  - Removing and installing rear brake disc (2x)
  - Removing and installing trailing arm (2x)
  - Performing suspension alignment

**Parts required:**

918.331.043.00	Lower longitudinal control arm for rear axle at the left/right	2 ea.
918.331.041.00	Lower transverse control arm for rear axle at the left/right	1 ea.

**or**

918.331.043.00	Lower longitudinal control arm for rear axle at the left/right	1 ea.
918.331.041.00	Lower transverse control arm for rear axle at the left/right	2 ea.

**Additional parts required** for vehicles **without** Racetrack package (I-no. 808):

999.311.504.01	Fit bolt, M12 x 1.5 x 77	3 ea.
----------------	--------------------------	-------

**Additional parts required** for vehicles **with** Racetrack package (I-no. 808):

999.311.504.02	Fit bolt, M12 x 1.5 x 77	3 ea.
----------------	--------------------------	-------

**Additional parts required:**

999.084.655.01	Hexagon nut, M12 x 1.5	3 ea.
----------------	------------------------	-------

999.084.656.01	Hexagon nut, M10	10 ea.
999.073.572.01	Lens-head screw, M6 x 8	4 ea.

**Invoicing:** ⇒ **Damage code AE03 99 000, Repair code 2**

Scope 6: Checking batch numbers and replacing **all four** trailing arms.

**Working time:**

Checking batch numbers and replacing four trailing arms (longitudinal or transverse control arms) Labor time: **384 TU**

Includes:

- Raising and lowering the vehicle
- Removing and installing covers in the underbody
- Removing and installing lower rear side spoiler at the left and right
- Removing and installing wheel (2x)
- Loosening and securing rear brake calliper (2x)
- Removing and installing rear brake disc (2x)
- Removing and installing trailing arm (2x)
- Performing suspension alignment

**Parts required:**

918.331.043.00	Lower longitudinal control arm for rear axle at the left/right	2 ea.
918.331.041.00	Lower transverse control arm for rear axle at the left/right	2 ea.

**Additional parts required** for vehicles **without** Racetrack package (I-no. 808):

999.311.504.01	Fit bolt, M12 x 1.5 x 77	4 ea.
----------------	--------------------------	-------

**Additional parts required** for vehicles **with** Racetrack package (I-no. 808):

999.311.504.02	Fit bolt, M12 x 1.5 x 77	4 ea.
----------------	--------------------------	-------

**Additional parts required:**

999.084.655.01	Hexagon nut, M12 x 1.5	4 ea.
999.084.656.01	Hexagon nut, M10	12 ea.
999.073.572.01	Lens-head screw, M6 x 8	4 ea.

**Invoicing:** ⇒ **Damage code AE03 99 000, Repair code 2**

References: ⇒ *Workshop Manual '4X00IN Lifting the vehicle'*  
 ⇒ *Workshop Manual '449503 Suspension alignment, complete'*

- ⇒ *Workshop Manual '4X00IN Adjustment values for suspension alignment'*
- ⇒ *Workshop Manual '421119 Removing and installing lower trailing arm'*
- ⇒ *Workshop Manual '440519 Removing and installing wheel'*
- ⇒ *Workshop Manual '465419 Removing and installing rear PCCB brake disc'*
- ⇒ *Workshop Manual '474119 Removing and installing rear brake calliper'*
- ⇒ *Workshop Manual '518119 Removing and installing jacking points'*
- ⇒ *Workshop Manual '66591901 Removing and installing lower part of rear spoiler (at the sides)'*