



WORTHINGTON
INDUSTRIES

Instructions for PRD Removal and Installation

(1) Affected cylinders must be fully vented in accordance with local regulations.

Note/Danger: Persons must be certain that the cylinders are fully vented prior to removing/replacing the circle seal prd or any other pressure parts. Even low cylinder pressure can cause injury or eject the prd like a projectile during its removal.

Note/Danger: Vented natural gas is flammable and can be explosive. Persons must take appropriate pre-cautions to keep the work area clear of ignition sources and to ensure that the containers are sufficiently grounded so as to prevent the buildup of static electricity around the venting natural gas.

(2) Disconnect prd vent piping from the original Circle Seal prd

(3) Remove the original Circle Seal prd and its o-ring

(4) Inspect the cylinder o-ring gland and the cylinder neck face to make sure there are no gouges, scratches, or dents that might allow o-ring extrusion or which might prevent the replacement Circle Seal prd from seating squarely on the cylinder neck face.

(5) Apply o-ring lube to the o-ring on the replacement Circle Seal prd

(6) Install the replacement circle seal prd into the cylinder port with 125 – 130 Ft x Lbs torque

Note: The cylinder port is made from aluminum materials. The cylinder can be rendered unusable if the port threads are cross threaded or damaged. For this reason, persons should at first partially install the replacement prd by hand to ensure that the prd is properly engaging the cylinder port threads. A torque wrench can then be used to ensure the proper installation torque

(7) Connect the prd vent piping to the replacement Circle Seal prd

Propane Tank Serial Number Identification

Shown below are the three types of propane tank data plates used on Blue Bird buses. The data plates are mounted in approximately the same area (mid-tank on the bottom side) on the tank. Serial number can be found in location indicated by red arrows.



Fig. 1

Located at top center of data plate

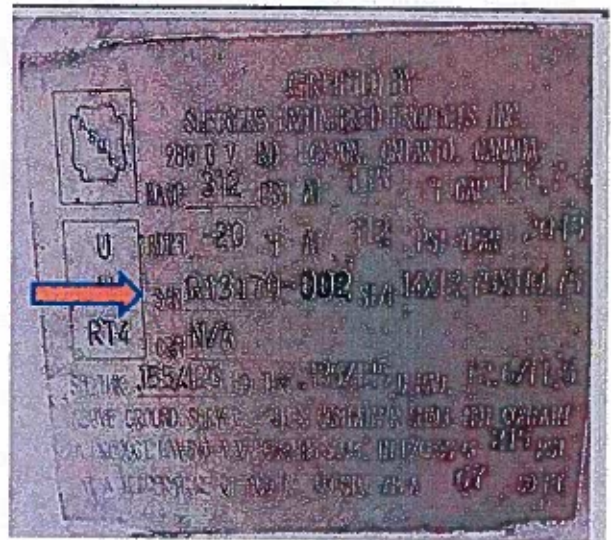


Fig 2

Located at left center of data plate

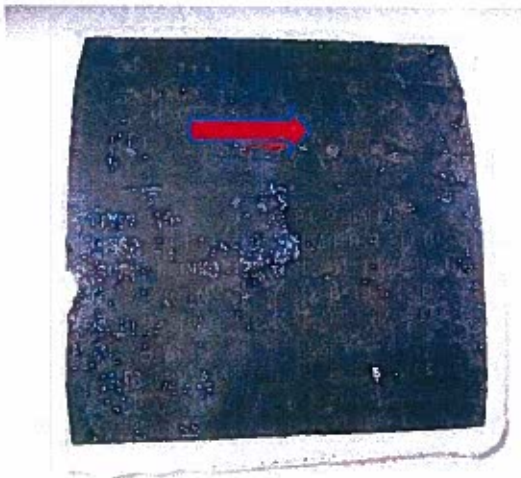


Fig. 3

Located at right top of data plate

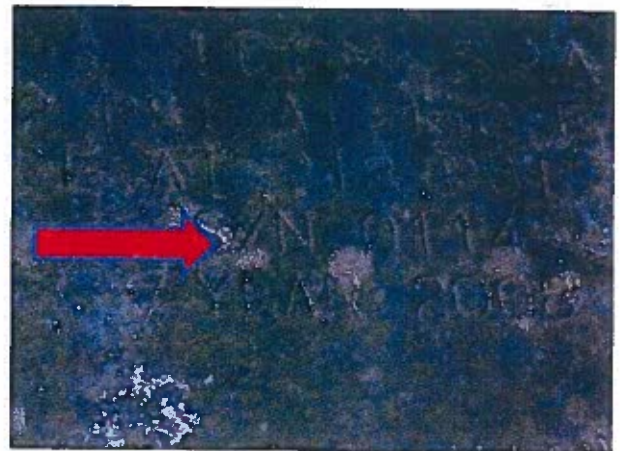


Fig 3a

Serial number detail (ex. S/N 0114)

Serial numbers shown are for reference only.