



Technical Service Bulletin

GROUP CAMPAIGN	NUMBER 17-01-065
DATE NOVEMBER, 2017	MODEL(S) SANTA FE (SM)

SUBJECT: SANTA FE (SM) FRONT COIL SPRING PROTECTOR
(RECALL CAMPAIGN 124)

This TSB supersedes TSB# 14-01-040-1 to include information for obtaining PA approval for goodwill claims.

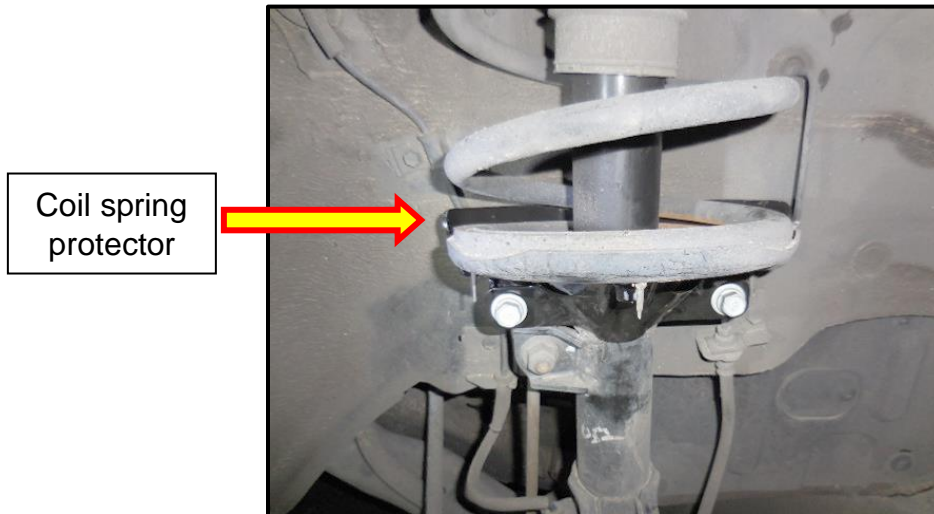
★ IMPORTANT

*** RETAIL VEHICLES ONLY ***

Dealers must perform this Recall Campaign whenever an affected vehicle is in the shop for any maintenance or repair.

When a vehicle arrives at the Service Department, access Hyundai Motor America's "Warranty Vehicle Information" screen via WEBDCS to identify open Campaigns.

Description: This bulletin describes the procedure to install front coil spring protectors to prevent the spring from contacting the tire in the event the coil spring fractures. A fractured coil spring can make contact with the tire, potentially resulting in a tire puncture and increasing the risk of a crash.



Applicable Vehicles: 2001~2006 Santa Fe vehicles produced from Jan. 1, 2000 to March 21, 2006.

Area:

Salt belt states: Connecticut, Delaware, Illinois, Indiana, Iowa, Maine, Maryland, Massachusetts, Michigan, Minnesota, Missouri, New Hampshire, New Jersey, New York, Ohio, Pennsylvania, Rhode Island, Vermont, West Virginia, Wisconsin, and the District of Columbia.

★ IMPORTANT

Vehicles that have relocated into a “salt belt” area and/or vehicles registered in a “non salt belt” state and driven in a “salt belt” area are eligible for this campaign procedure. If it is determined that an owner of a vehicle within the affected VIN production date range relocates or has operated their vehicle in a “salt belt” area, the dealer should perform the campaign procedure. The dealer should perform this procedure at no cost to the customer, and the dealer’s District Parts and Service Manager must be contacted prior to repair and submission of Warranty Claim.

NOTICE

In the event aftermarket strut(s) are installed, it will be necessary to replace the aftermarket strut(s) with Hyundai Genuine Strut(s). Refer to the appropriate shop manual for removal and installation of the front struts. Once the Hyundai Genuine strut(s) are installed, the recall service procedure should be completed.


The replacement of the aftermarket strut(s) with Hyundai Genuine strut(s) should be submitted as a goodwill claim. Submit a Prior Approval Request for goodwill consideration prior to performing the work. The strut should be used as the Causal Part Number, with the OEM Part Number identified as replaced part(s). The applicable labor operation for Replacement of the strut(s) should be used.

A WTC Parts Return Notice may be generated for the replacement of the OEM strut(s). Dealers should return the aftermarket strut in order to satisfy the Parts Return notice.

NOTICE

In the event aftermarket spring(s) are installed, the recall service procedure should still be completed. Also, **it is required to document the presence of aftermarket spring(s) on the repair order.**

Parts Information:

Part Name	Image	Remarks
Spring Protector Kit	 <p data-bbox="535 1879 909 1911">Part #: 54631-26000-QQH</p>	<p data-bbox="1157 1459 1299 1491">Contents:</p> <ul style="list-style-type: none"> <li data-bbox="1201 1501 1485 1564">1) 2 x Inner Spring Protector <li data-bbox="1201 1575 1485 1638">2) 2 x Outer Spring Protector <li data-bbox="1201 1648 1485 1711">3) 4 x Bolt/Washer Assy <li data-bbox="1201 1722 1364 1753">4) 2 x Bolt <li data-bbox="1201 1764 1485 1795">5) 2 x Lock Washer <li data-bbox="1201 1806 1364 1837">6) 2 x Nut

Warranty Information:

Model	Op. Code	Operation	Op. Time	Causal Part	Nature Code	Cause Code
SM Santa Fe	41C051R0	Front Spring Protector Installation	0.4 M/H	54631-26000- QQH	A12	ZZ6

NOTE 1: Submit Claim on Campaign Claim Entry Screen

NOTE 2: If a part is found in need of replacement while performing this TSB and the affected part is still under warranty, please submit a separate claim using the same Repair Order.

If the affected part is out of warranty, submit a Prior Approval Request for goodwill consideration prior to performing the work.

Service Procedure:

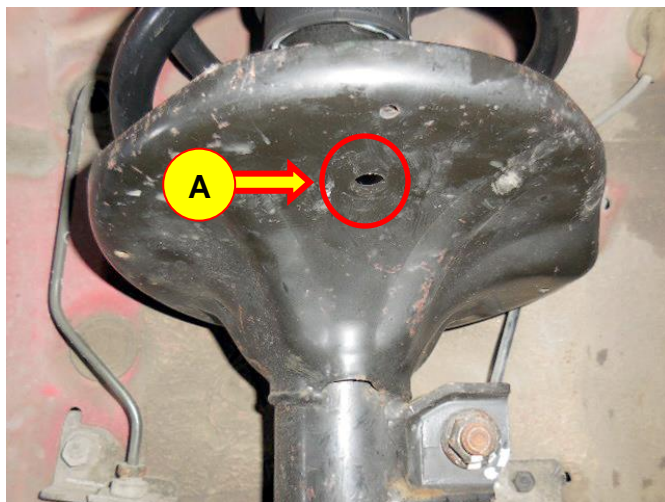
1. Lift the vehicle on a hoist and remove the front wheel assemblies.

NOTICE

Tightening torque: 65.1~79.6 lb-ft (88.2~107.8 Nm, 9.0~11.0 kgf.m)



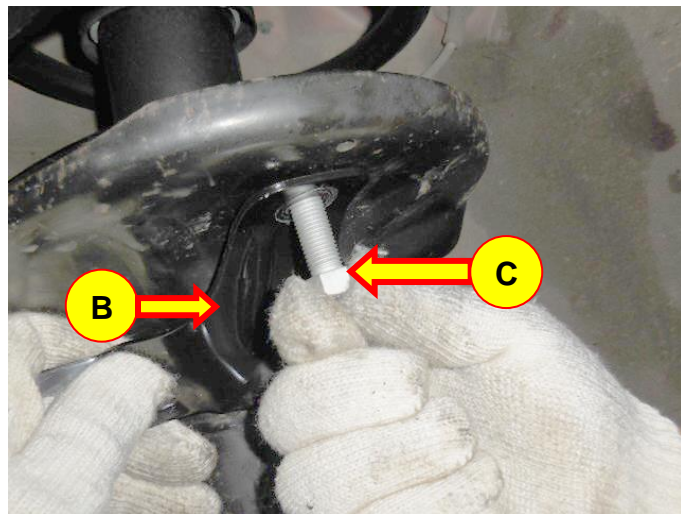
2. Starting on the left side strut, locate the spring perch hole (A).



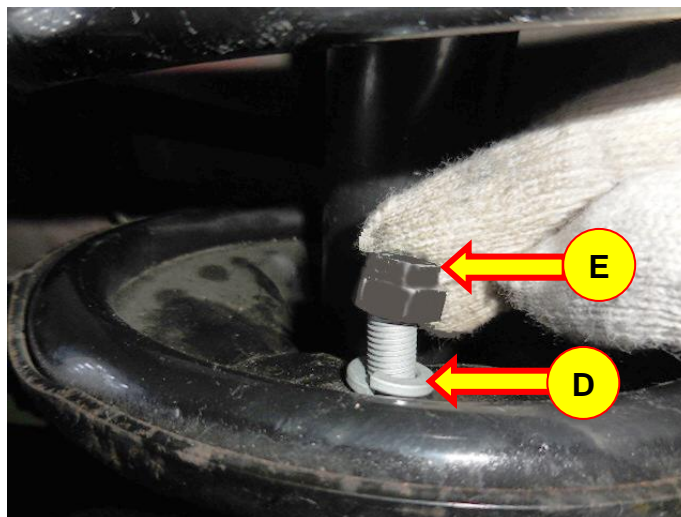
3. Align the outer spring protector (B) with the spring perch hole and ***insert the bolt (C) from the bottom of the spring perch.***

⚠ WARNING

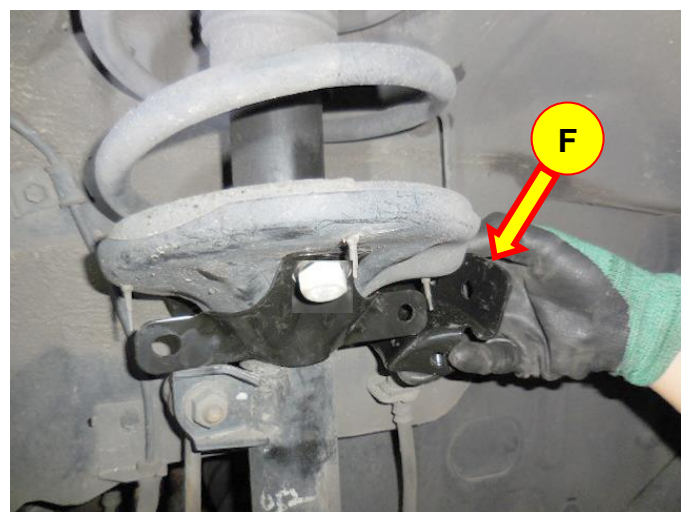
Insert the bolt ***by hand***. DO NOT insert the bolt by using a socket or other tool. Doing so may remove the paint from the bracket surface.



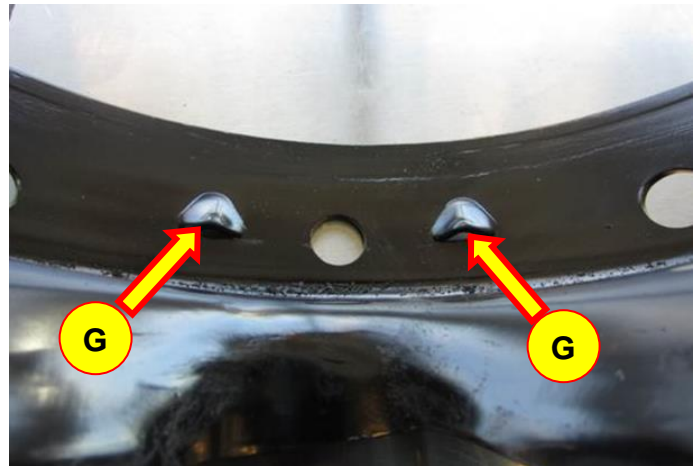
4. Loosely install the lock-washer (D) and nut (E) on the top side of the spring perch.



5. Position the inner spring protector (F) between the body and the strut.



- 5a. When placing the spring protector into position, the two triangular “teeth” (G) must sit on top of the strut spring perch lip.



6. Loosely install the bolt/washer assemblies to hold the inner spring protector to the outer spring protector.



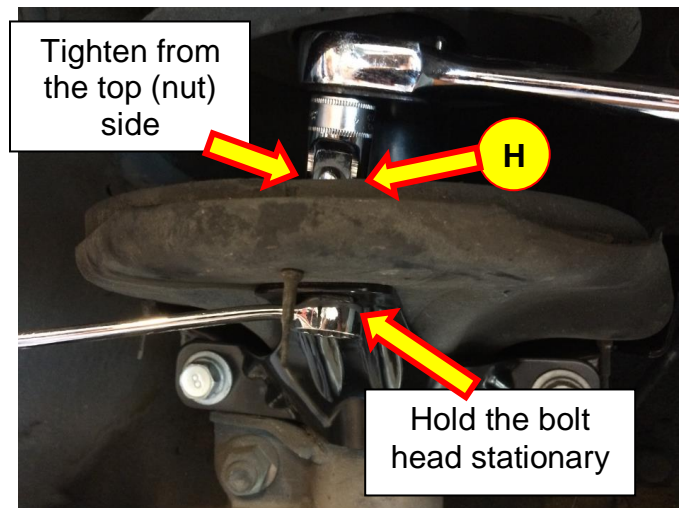
7. Tighten the outer spring protector nut (H) first.

⚠ WARNING

Hold the bolt head stationary while tightening the nut. DO NOT tighten from the bolt head. Doing so may remove the paint from the bracket surface.

NOTICE

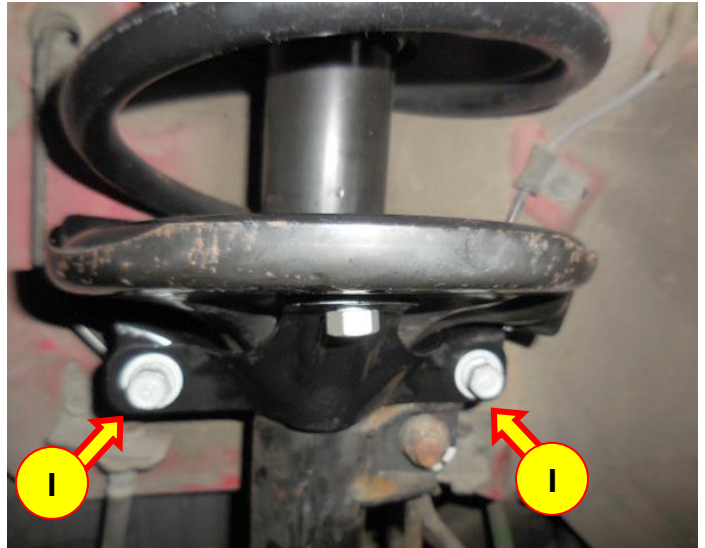
Tightening torque: 43.4~50.6 lb-ft (58.8~68.6 Nm, 6.0~7.0 kgf.m)



8. Tighten the protector bolts (I).

NOTICE

Tightening torque: 43.4~50.6 lb-ft (58.8~68.6 Nm, 6.0~7.0 kgf.m)



9. Reinstall the wheel/tire assembly.

NOTICE

Tightening torque: 65.1~79.6 lb-ft (88.2~107.8 Nm, 9.0~11.0 kgf.m)

- 10a. After installing the spring protectors, measure to verify that the clearance between the tire and the bolt head is at least 10mm.

CAUTION

Minimum clearance between tire and bolt: 10 mm



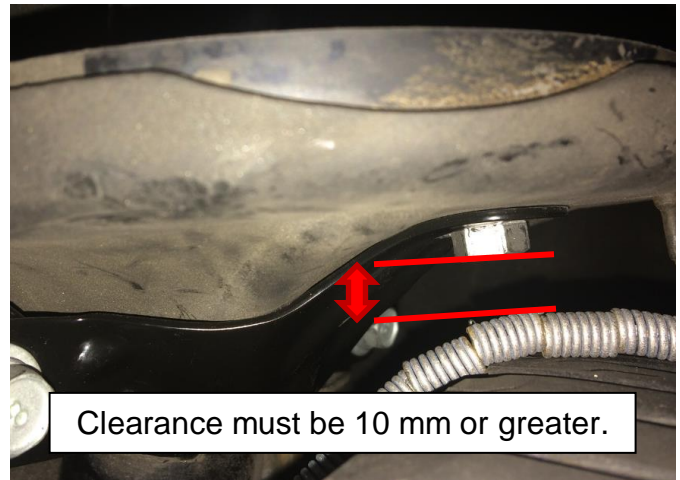
Clearance must be 10 mm or greater.

- 10b. If snow chains are used, the minimum clearance between the chain and the bolt head is 10mm.

Measure the gap to verify the specification is met.

⚠ CAUTION

Minimum clearance between snow chain and bolt: 10 mm



11. Repeat steps 2-10 on the right side of the vehicle.
12. Test drive the vehicle to confirm there is no interference between the tire and the spring protector.