

**HYUNDAI**NEW THINKING.  
NEW POSSIBILITIES.**Technical Service Bulletin**

GROUP

**CAMPAIGN**

NUMBER

**14-01-033**

DATE

**AUGUST, 2014**

MODEL

**SONATA (YF)****SUBJECT:****AUTOMATIC TRANSAXLE SHIFT LEVER  
(RECALL CAMPAIGN 123)****★ IMPORTANT****\*\*\* Dealer Stock and Retail Vehicles \*\*\***

As required by federal law, dealers must not deliver new vehicles for sale or for lease to customers until all open recalls have been performed. Dealers must also perform all open recalls on used vehicles, demo and rental vehicles prior to placing them into customer use and whenever an affected vehicle is in the shop for any maintenance or repair.

When a vehicle arrives at the service department, access Hyundai Motor America's "Warranty Vehicle Information" screen via WEBDCS to identify open Campaigns.

**Description:** This bulletin provides a procedure to install an E-clip on the shift lever pin to secure the shift cable to the shift lever.

The cable connecting the transmission range switch to the vehicle's shift lever pin may become disconnected. Symptoms can include inability to remove the vehicle's transaxle from the Park position or inability to place the vehicle's transaxle into Park position, preventing the vehicle from being started. As a result of the shift cable being disconnected, the shift lever can be moved into the Park position while the vehicle's transaxle remains in the last gear position prior to the cable becoming disconnected. If the vehicle is not in the Park position and the parking brake is not applied, there is a risk the vehicle will roll away as the driver and other occupants exit the vehicle or anytime thereafter.

**Applicable Vehicles:** 2011~14 Sonata 2.0L and 2.4L (excluding Hybrid) with automatic transaxles

**Parts Information:**

Part Name	Part Number	Qty.
E-clip	14611-08003-QQH	1

**NOTE:** Each package contains 10 E-clips.

**Warranty Information:**

Model	Op. Code	Operation	Op. Time
2011~14 Sonata (YF)	41CA06R0	E-Clip Installation	0.3

**Repair Procedure:**

1. Turn the engine off and apply the parking brake.

Use a plastic trim tool to remove the dash pad garnish.



2. Turn the ignition to the ON position and depress the brake pedal.

Move the shift lever to the "N" position.

Turn the ignition to the OFF position.

Pull up on the shift knob until the knob is disconnected from the shift lever.

**NOTICE**

It is not necessary to disconnect the shift boot.

3. Use a plastic trim tool to remove the console upper cover.



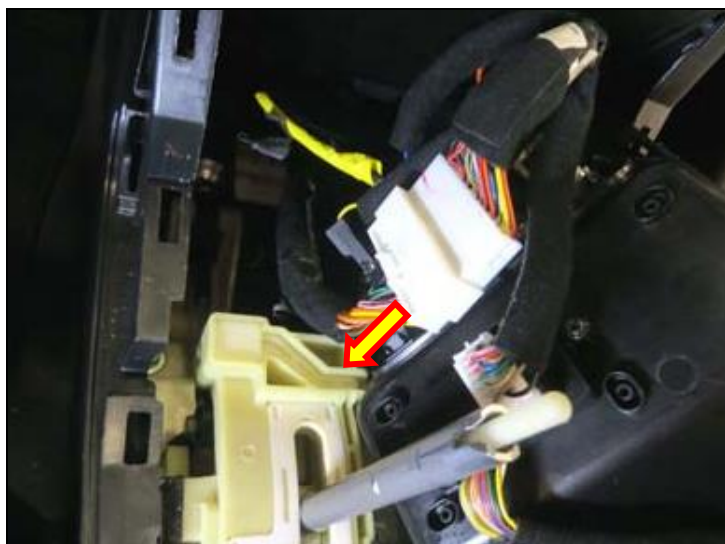
4. Disconnect one black connector.

Disconnect one white connector (on early model years).



5. Pull the console cover up and disconnect the white connector in the front of the cover.

Do not remove the grey connector with a yellow wire.

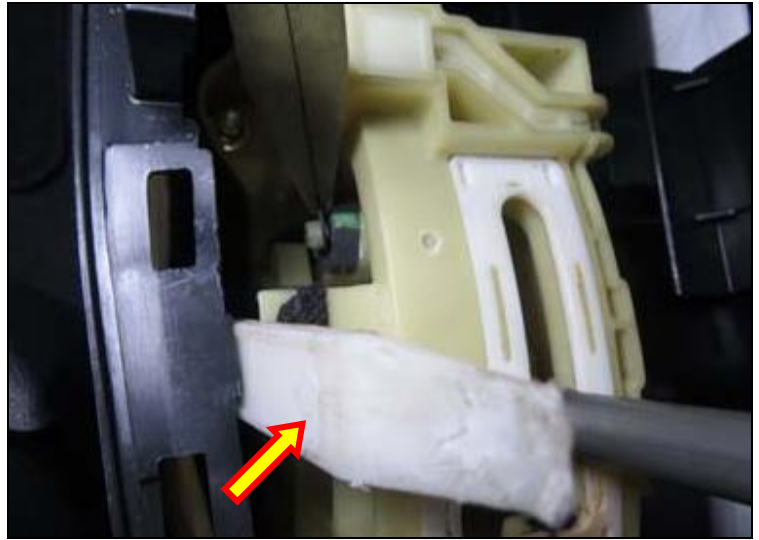


6. Lay the console cover on the passenger seat.

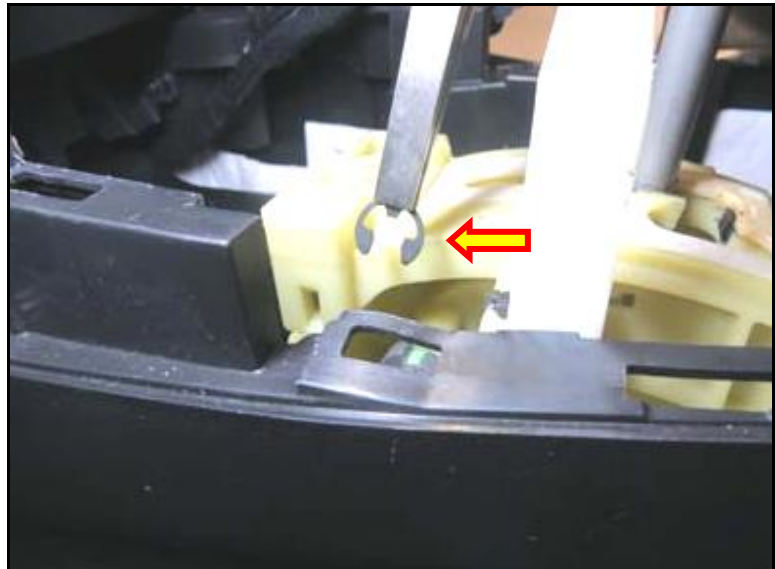


7. Insert a plastic trim tool between the center console and shift lever to provide access to the shift cable.

Confirm the shift lever is in the "N" position.



8. Use pliers to grasp the E-clip as shown. (Thin pliers are best for this procedure.)

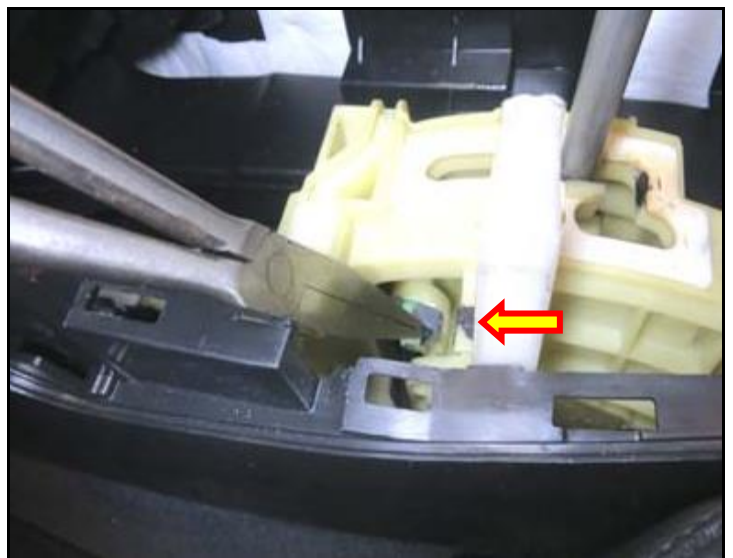


9. Use thin pliers to push the E-clip onto the shift lever pin.

If thin pliers are not available, use small needle nose pliers to hold the E-clip in position on the shift lever pin and push the E-clip into position with a flat screwdriver.

**NOTICE**

If necessary, use a flat screwdriver to fully push the E-clip onto the pin.



10. Turn the ignition to the ON position and depress the brake pedal.

Move the shift lever through gears P-R-N-D and confirm the E-clip is securely installed.

Reassemble all parts in the reverse order of disassembly.

Confirm the P-R-N-D lights illuminate in the dash cluster and on the console cover.

Confirm the seat warmers operate (if equipped).

