

SUBJECT: Safety Recall Campaign "XC";
Daytime Running Light (DRL) Module Overheating

MODEL(S): Verona (RP625)

YEAR: 2004~2006

CONDITION: Affected vehicles may generate heat in the DRL Module which could melt the Module. If the heat generated within the DRL Module melts the component, there is an increased risk of a fire.

CAUSE: Suzuki has determined that certain 2004~2006 Suzuki Verona vehicles may generate excessive heat in the DRL Module.

CORRECTION: Authorized Suzuki Service Providers will replace the DRL Module. This repair will be at no charge to the Owner on affected vehicles.

PARTS INFORMATION

Part Number	Part Name	Qty	Comment
38860-84Z21-RX0	Module, DRL	1	--

WARRANTY CLAIM INFORMATION

Labor Operation	Description	Failed Part Number	Complaint Code	Defect Code	Labor Time
Please refer to Campaign Bulletin SC-69 for claim submission Instructions.					

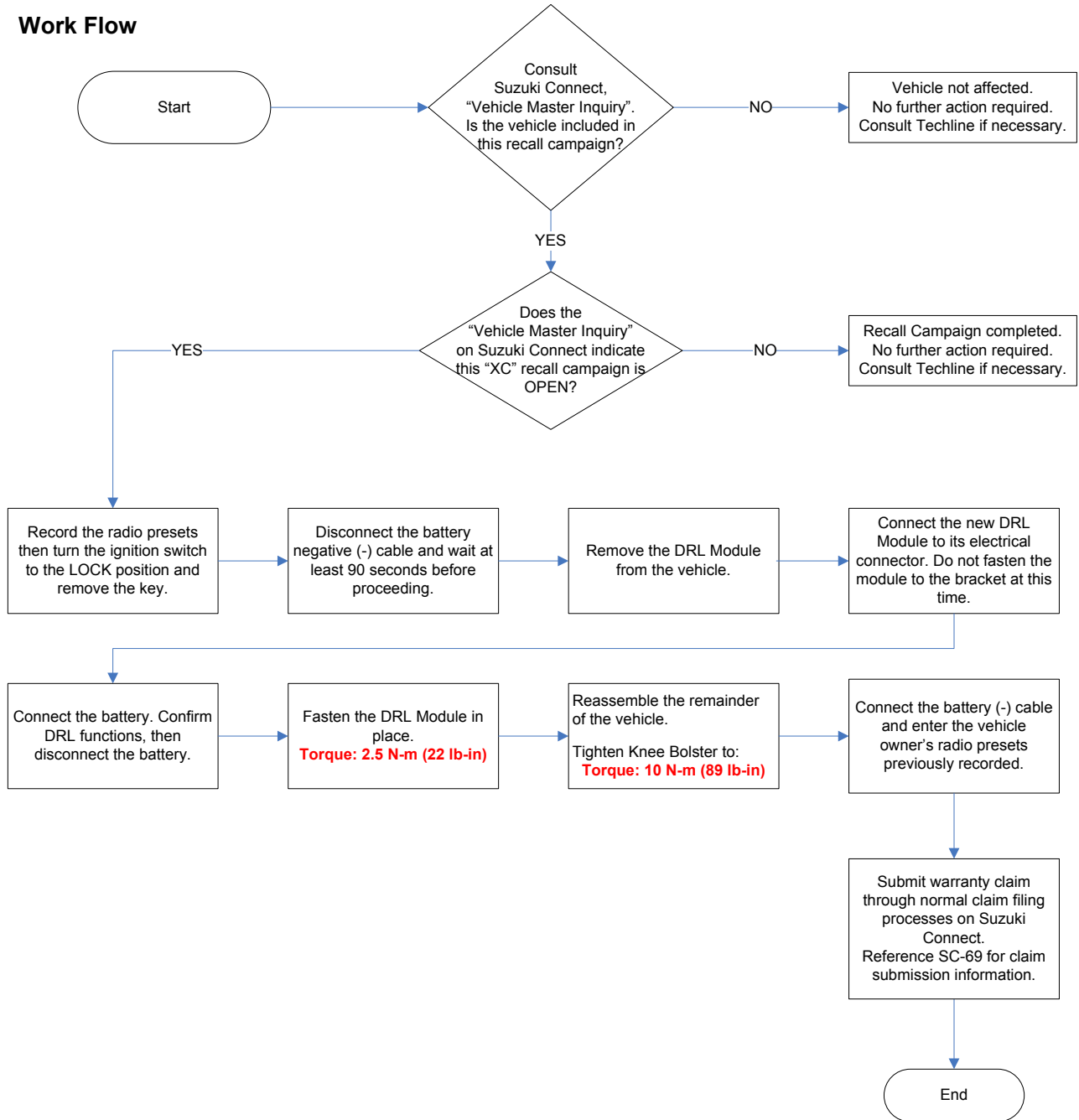
Affected Departments:

The following departments in your dealership should be notified of this information:

Management Service Warranty Sales Parts Accessories

Suzuki bulletins are intended for use by professional technicians, NOT a "do-it-yourselfer." They are written to inform these technicians of conditions that may occur on some vehicles, or to provide information that could assist in the proper service of a vehicle. Properly trained technicians have the equipment, tools, safety instructions, and know-how to do a job properly and safely. If a condition is described, DO NOT assume that the bulletin applies to your vehicle, or that your vehicle will have that condition. See your authorized Suzuki Service Provider for information on whether your vehicle may benefit from the information. Suzuki reserves the right to change technical specifications at any time without prior notice.

Work Flow



NOTE:

The figures and pictures in this bulletin are representative only and will vary depending on model and specification. Refer to the appropriate service materials for detailed information for the vehicle being repaired.

Daytime Running Light (DRL) Module Replacement

NOTICE

Radios (Verona Model Year 2004) with an Anti-Theft Function enabled will become inoperable when battery power is removed.

Before beginning these service procedures, if the radio has an Anti-Theft function, have the vehicle owner provide their Radio Anti-Theft Code to ensure continued radio operation.

1. Record the radio presets then turn the ignition switch to the LOCK position and remove the key.
2. Disconnect the battery negative (-) cable and wait at least 90 seconds before proceeding.
3. Remove the instrument panel Lower Cover and Knee Bolster. Then remove the screws holding the DRL module in place and disconnect it from its electrical connector.

The DRL Module is located behind the knee bolster and right of the steering column, near the center console area. The DRL Module can be identified by its manufacture name "Hamsar" on the label. It also shares the same harness bundle with the DLC connector.



4. Connect the Late DRL Module to the connector. Do not fasten the module to the bracket at this time.



5. Connect the Battery. Confirm DRL functions, then disconnect the battery.
DRL Normal Function: DRL should be ON when the Ignition is ON.
DRL should be OFF when the Headlamps are ON.
DRL should be OFF when the Park Brake is APPLIED.
6. Secure the Module in place.
Tighten: 2.5 N-m (22 lb-in)
7. Reassemble the remainder of the vehicle.
Tighten Knee Bolster: 2.5 N-m (22 lb-in)
8. Connect the battery (-) cable and if necessary, enter the vehicle owner's radio presets previously recorded.
9. Submit warranty claim through normal claim filing process on Suzuki Connect. Reference SC-69 for claim submission information.