



# SAFETY RECALL BULLETIN

SUBJECT:			No: <b>SR-14-004</b>
<b>2014 LANCER EVOLUTION AND LANCER RALLIART POWER STEERING PRESSURE HOSE ASSEMBLY – SAFETY RECALL CAMPAIGN</b>			DATE: <b>June, 2014</b>
			MODEL: <b>2014 Lancer Evolution and Lancer Ralliart</b>
CIRCULATE TO:	<input checked="" type="checkbox"/> GENERAL MANAGER	<input checked="" type="checkbox"/> PARTS MANAGER	<input checked="" type="checkbox"/> TECHNICIAN
<input checked="" type="checkbox"/> SERVICE ADVISOR	<input checked="" type="checkbox"/> SERVICE MANAGER	<input checked="" type="checkbox"/> WARRANTY PROCESSOR	<input checked="" type="checkbox"/> SALES MANAGER

## PURPOSE

The power steering pressure hose assembly may have been installed with insufficient clearance to the crossmember brace during production, possibly causing the power steering pressure hose assembly to rust from abrasive contact between the two components. In the worst case scenario, a pin hole could develop and allow for power steering fluid leakage, resulting in increased steering effort and potential for a fire in the presence of an ignition source.

This campaign bulletin instructs dealers to inspect the clearance between the power steering pressure hose assembly and the crossmember brace. If there is insufficient clearance between the two components, the power steering pressure hose assembly must be replaced.

## AFFECTED VEHICLES

Certain 2014 Lancer Evolution vehicles built January 31, 2014 – February 21, 2014  
Certain 2014 Lancer Ralliart vehicles built February 3, 2014 – February 14, 2014.

**IMPORTANT**

**Affected new or used inventory vehicles must be repaired before the vehicle is delivered. Dealers must check their inventory vehicles' VINs on the Warranty Super Screen to verify whether the vehicle is involved in this recall campaign. It is a violation of Federal law for a dealer to deliver a new motor vehicle or any new or used item of motor vehicle equipment (including a tire) covered by the notification under a sale or lease until the defect or non-compliance is remedied.**

## CUSTOMER NOTIFICATION

A letter will be sent to all owners of affected vehicles telling them to visit their local Authorized Mitsubishi Motors dealer and have the power steering pressure hose assembly inspected and replaced if necessary. A copy of the customer notification letter appears at the end of this bulletin.

## REQUIRED OPERATIONS

Before starting this campaign procedure, **CHECK THE WARRANTY SUPERSCREEN** to verify if the vehicle is an affected VIN for this campaign and this campaign procedure has not already been completed.

## REQUIRED EQUIPMENT

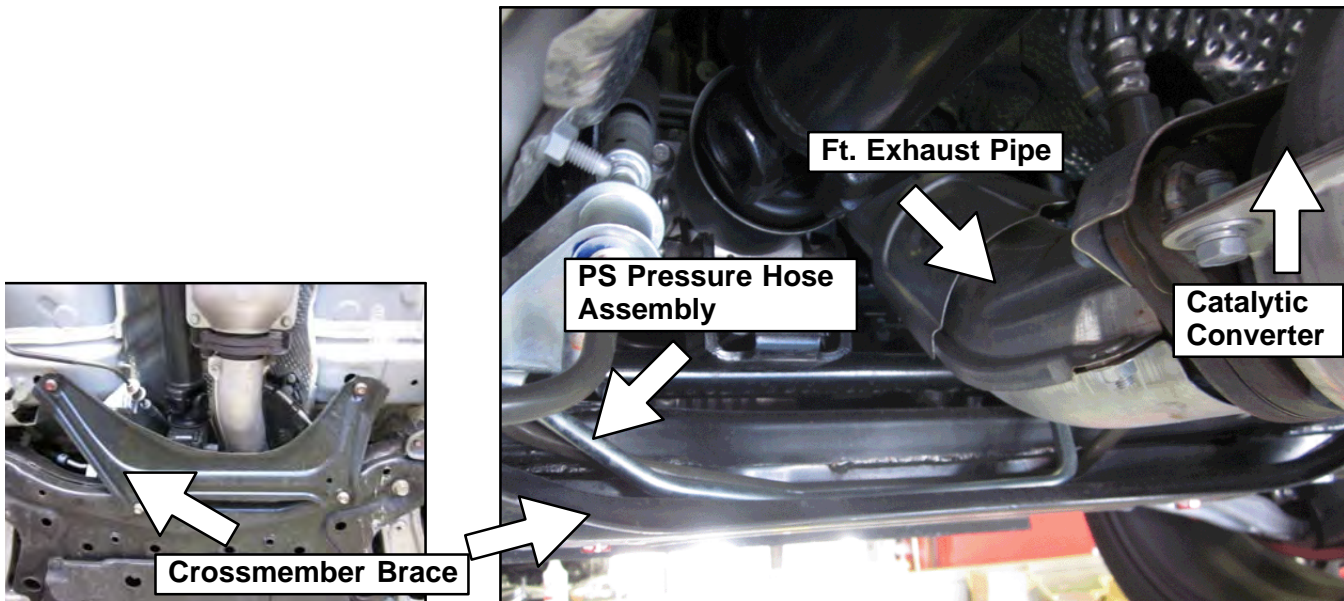
**The following equipment is needed to erase and read DTCs from all ECUs:**

- VCI (Vehicle Communication Interface) or VCI Lite – MB991824 or MB992744.
- MEDIC Laptop computer with A/C power adapter – 520924, or 547708.
- MUT-III main harness 'A' (blue connector at the DLC end) – MB991910 or MB992745.
- USB 2.0 cable – MB991827 or MB992747.

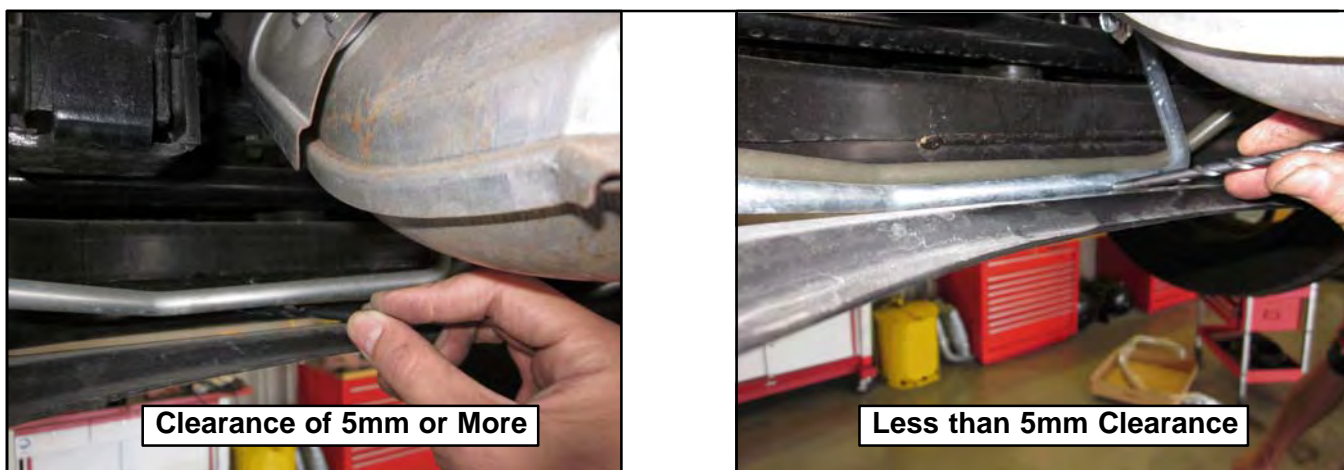
## INSPECTION PROCEDURE

**⚠ WARNING** The front exhaust pipe and catalytic converter may be hot. Do not touch.

1. Place the vehicle on a lift. Set the parking brake and turn the ignition switch to "LOCK" (off) position. If vehicle is TC-SST equipped, ensure selector is in "P" (park) position.
2. Raise the vehicle. From underneath, locate the power steering pressure hose assembly and the crossmember brace (where the front exhaust pipe connects to the catalytic converter).



3. Using a taper gauge, thickness gauge, or 5mm drill bit, measure the clearance between the power steering pressure hose assembly and the crossmember brace.



- a. If the clearance between the two components is 5mm (0.2 in) or more, **replacement is not necessary**. Complete the campaign claim and enter campaign labor operation **C1404W01**.
- b. If the clearance between the two components is less than 5mm (0.2 in), proceed to the **Replacement Procedure** below.

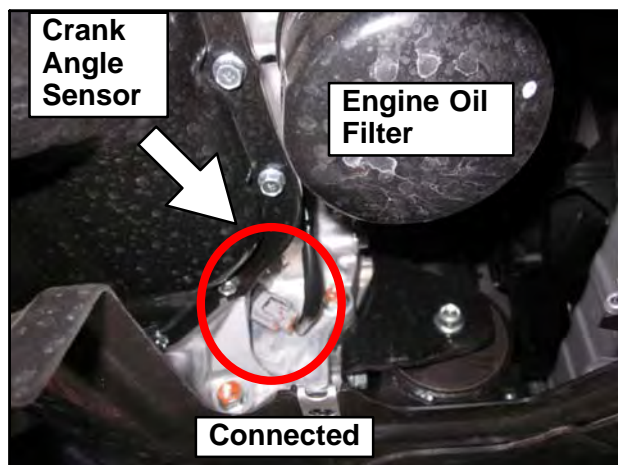
## REPLACEMENT PROCEDURE

**⚠ WARNING** The front exhaust pipe and catalytic converter may be hot. Do not touch.

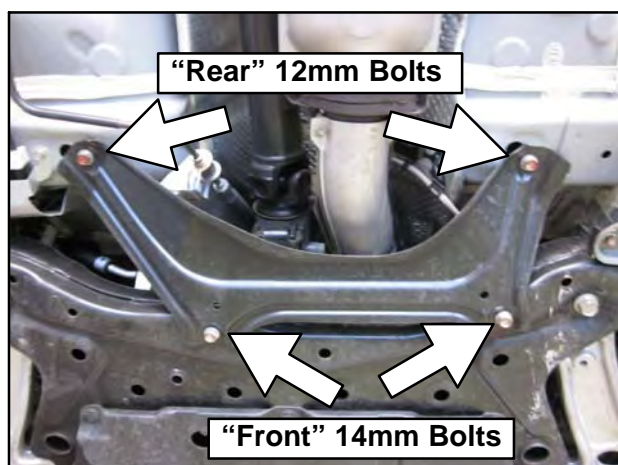
1. Remove engine room under cover extension by removing (9) 10mm bolts.



2. Disconnect the crank angle sensor connector with your fingers by depressing the tab on the connector.



3. Remove crossmember brace by removing (2) "front" 14mm bolts and (2) "rear" 12mm bolts.

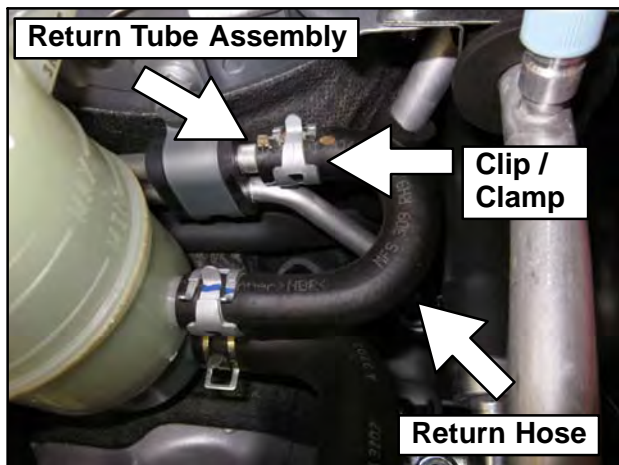




4. Lower the vehicle to a level where the wheels are approximately 3 inches from the ground. Place a fender cover along the passenger side fender to protect the body from power steering fluid leakage. Remove the cap and oil ring from the power steering oil reservoir. Extract as much fluid as you can from the reservoir.



5. Use pliers to loosen the clip/clamp and disconnect the return hose from the return tube assembly.



6. Connect a spare rubber hose that is at least 1 foot long with an inner diameter of 10mm to the return tube assembly nozzle. Insert the other end of the hose to an empty 1L container for fluid extraction.



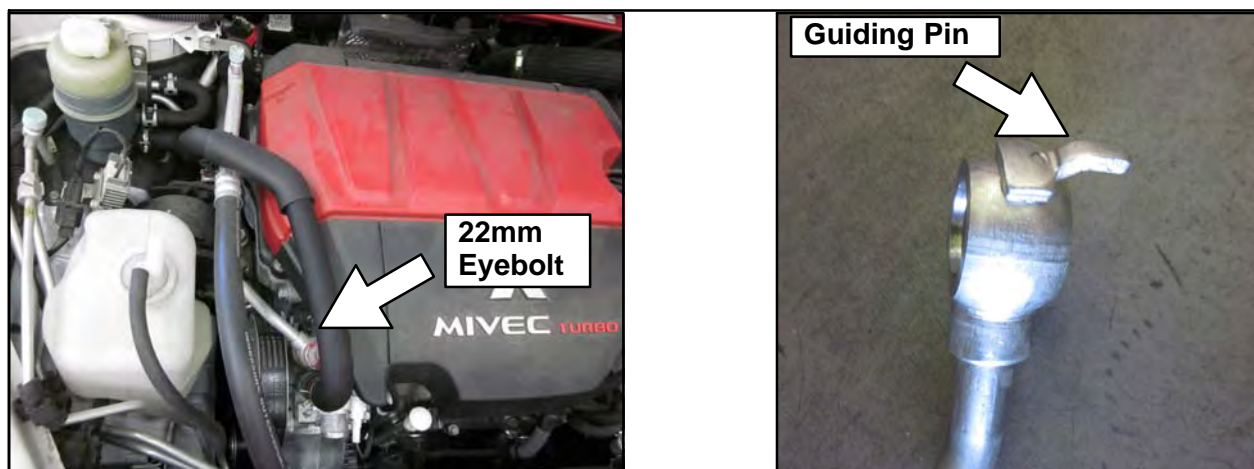
7. Have another technician sit in the driver's seat and crank the engine. Keep the engine cranking in 15–20 second intervals while rotating the steering wheel from lock-to-lock. This action circulates the power steering fluid through the return tube assembly. Continue this action until power steering fluid is no longer flowing from the hose.

**NOTE:** Crank angle sensor was disconnected to prevent the engine from starting.

**CAUTION** Be careful to not overfill the bottle.

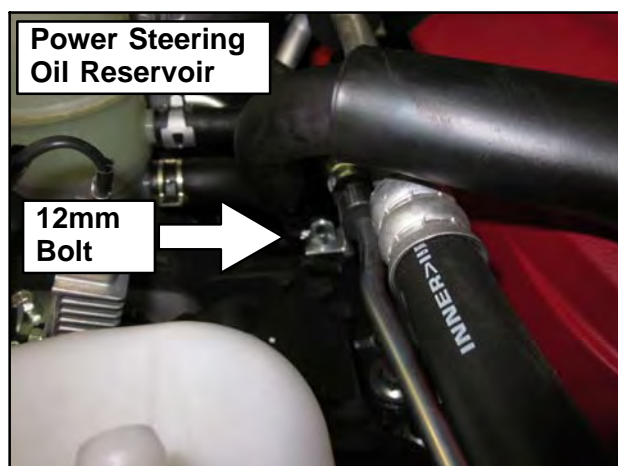
8. Disconnect the spare rubber hose and reinstall the return hose. Replace the clip/clamp.
9. Remove and discard the power steering pressure hose assembly's 22mm oil pump assembly eyebolt.

**IMPORTANT** Do not reuse the (2) copper gaskets. Ensure the copper gaskets do not remain on the eyebolt's mounting location.



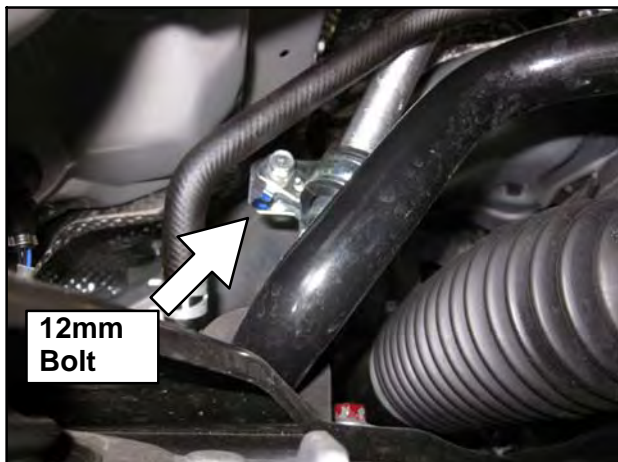
**NOTE:** Ensure the guiding pin is dismantled prior to completing the next step.

10. Remove the power steering pressure hose assembly's 12mm engine compartment bolt.



11. Dismount the power steering pressure hose assembly to allow for removal from the vehicle's underside.
12. Raise the vehicle.

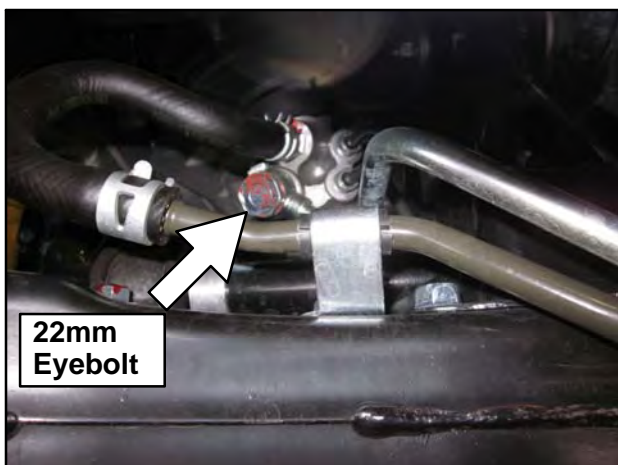
13. Remove the power steering pressure hose assembly's 12mm subframe bolt on the passenger side.



14. Remove and discard the power steering pressure hose assembly's 22mm steering rack eyebolt.

**CAUTION** Eyebolt removal will cause power steering fluid to leak. Prepare a drain pan underneath the eyebolt and place shop rags near the area to prevent spillage.

**IMPORTANT** Do not reuse the (2) copper gaskets. Ensure the copper gaskets do not remain on the eyebolt's mounting location.



15. Remove the power steering pressure hose assembly. Keep the assembly upright to prevent power steering fluid spillage. Drain the remaining fluid into a drain pan.
16. Install the new power steering pressure hose assembly from the vehicle's underside and hand tighten the 12mm subframe bolt. Adjust as needed.

**IMPORTANT** Keep the power steering pressure hose assembly plastic caps in place during test fitment to prevent damage to the hose ends.

17. Lower the vehicle. Hand tighten the power steering pressure hose assembly's 12mm engine compartment bolt. Adjust as needed.

18. Remove the plastic cap and replace the power steering pressure hose assembly's 22mm oil pump assembly eyebolt (**Part No. MR491471**) and (2) gaskets. Insert the guiding pin to its mounting location and hand tighten the eyebolt.

**IMPORTANT** Ensure the eyebolt's guiding pin is correctly inserted.

**IMPORTANT** Ensure (2) old copper gaskets are removed and (2) new copper gaskets are used.

19. Raise the vehicle. Remove the plastic cap and replace the power steering pressure hose assembly's 22mm steering rack eyebolt (**Part No. MR554636**) and (2) gaskets. Insert the guiding pin to its mounting location and hand tighten the eyebolt.

**IMPORTANT** Ensure the eyebolt's guiding pin is correctly inserted.

**IMPORTANT** Ensure (2) old copper gaskets are removed and (2) new copper gaskets are used.

20. Test fit the crossmember brace and hand tighten (4) bolts. Ensure the crossmember brace is installed flush to its mounting location. Using a taper gauge, thickness gauge, or 5mm drill bit, ensure the clearance between the power steering pressure hose assembly and the crossmember brace is 5mm (0.2 in) or more. If clearance is less than 5mm (0.2 in), adjust the power steering pressure hose assembly's 12mm subframe bolt so the clearance is 5mm (0.2 in) or more.
21. Torque the power steering pressure hose assembly's 22mm steering rack eyebolt to  $42 \pm 5$  ft-lb ( $57 \pm 7$  N-m).
22. Torque the power steering pressure hose assembly's 12mm subframe bolt to  $10 \pm 1$  ft-lb ( $13 \pm 2$  N-m).
23. Tighten the crossmember brace. Torque "front" 14mm bolts to  $35 \pm 8$  ft-lb ( $47 \pm 11$  N-m) and "rear" 12mm bolts to  $15 \pm 4$  ft-lb ( $20 \pm 5$  N-m).
24. Lower the vehicle to a level where the wheels are approximately 3 inches from the ground. Torque the power steering pressure hose assembly's 22mm oil pump assembly eyebolt to  $42 \pm 5$  ft-lb ( $57 \pm 7$  N-m).
25. Torque the power steering pressure hose assembly's 12mm engine compartment bolt to  $10 \pm 1$  ft-lb ( $13 \pm 2$  N-m).
26. Refill the reservoir with Genuine Mitsubishi Power Steering Fluid.
27. Have another technician sit in the driver's seat and crank the engine. Keep the engine cranking in 15–20 second intervals while rotating the steering wheel from lock-to-lock. This action circulates the power steering fluid through the power steering system. **Do not allow the reservoir level to fall below the return hose. Doing so may allow air into the system.**
28. To remove aeration from the system, repeat steps 26–27 until the reservoir's MAX level is reached and no bubbles are seen in the fluid.
29. Raise the vehicle. With a flashlight, inspect for any power steering fluid leakage.
30. Reconnect the crank angle sensor.
31. Lower the vehicle. Take note of the power steering oil reservoir level. Start the engine and look for any power steering fluid leakage in the engine compartment. Check the reservoir level again. If the level has decreased by 5mm (0.2 in) or more, air may still be in the system. Stop the engine, disconnect the crank angle sensor, and return to step 26.
32. Raise the vehicle. Check again for power steering fluid leakage and ensure the clearance between the power steering pressure hose assembly and crossmember brace is 5mm or more.

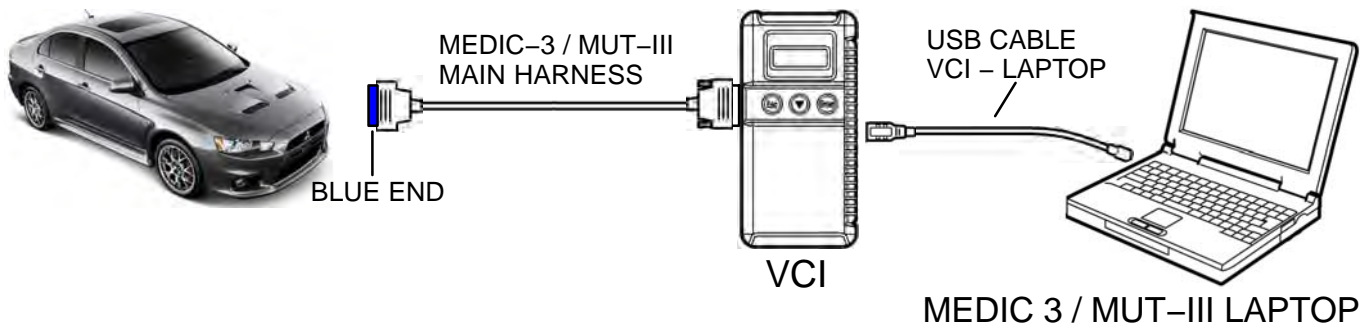
33. Reinstall engine room under cover extension and torque bolts to  $31 \pm 13$  in-lb ( $3.5 \pm 1.5$  N-m).
34. Lower the vehicle. Check the power steering oil reservoir and top off if necessary. Reinstall the power steering oil reservoir cap and oil ring.

## ERASE AND READ DTCs FROM ALL ECUs

1. Connect the equipment as follows:

- Turn the laptop computer on.
- Connect the USB cable to the VCI/VCI Lite.
- When the laptop displays the MUT-III main screen, connect the USB cable to the laptop.
- Connect the MUT-III main harness with the blue DLC connection to the VCI/VCI Lite.
- Connect the blue connector of the MUT-III main harness to the vehicle's data link connector.

**NOTE:** VCI shown for illustration purposes only.



2. Turn the ignition switch to the "ON" position.

**NOTE:** Ensure all accessories are off (e.g. lights, heating and AC system, audio/navi unit, etc...).

3. From the MEDIC main page,
  - a. Click on MUT-III
  - b. Select "Special Function"
  - c. Select "All DTCs"
  - d. Select "Erase and read all DTCs". If any DTCs appear, troubleshoot per the applicable service manual.



## PARTS INFORMATION

Use the genuine Mitsubishi Parts listed below:

Description	Part Number	Quantity
Hose, Power Steering Oil Pressure	4455A116	1
Gasket, Power Steering Oil Line	MF660066	4
Eyebolt, Power Steering Oil Line (Steering Rack)	MR554636	1
Eyebolt, Power Steering Oil Line (PS Oil Pump)	MR491471	1
Clip, Power Steering Oil Line (Return Hose)	MR133826	1
Genuine Mitsubishi Power Steering Fluid (1 liter)	4039645	1

## WARRANTY INFORMATION

There are 2 possible repair scenarios:

#	Campaign Operation	Repair Scenario	Labor Time Allowance
1	C1404W01	C1404W01 Inspect only – sufficient gap – no repairs needed	.2 hrs
2	C1404W02	C1404W02 Inspect – insufficient gap – replace power steering pressure hose	1.5 hrs

## WARRANTY / RECALL CAMPAIGN CLAIM INFORMATION

Enter all claims as claim type 'C' – Recall/Campaign Claims

Please follow the campaign instructions when entering each claim in order to select the operation code that correctly matches up with the work that was actually performed. A claim example is provided below.

Certain 2014 MY – Lancer Evolution and Lancer Ralliart models

Required Operation to be performed	Labor Operation	Labor Time
1. Inspect: Gap between PS pressure hose – Sufficient Gap – OK	C1404W01	0.2 hrs.
2. Inspect: Gap between PS pressure hose – Insufficient Gap – Replace	C1404W02	1.5 hrs.

Claim Header Section: 2014 MY Lancer Evolution and Ralliart – PS Pressure Hose Gap

**MITSUBISHI DEALER LINK** Service Warranty Warranty Claim Help

Claim Entry Vehicle Information PQR/VQR

### Campaign Information

Enter in the first 6 characters of this campaign labor operation: **C1404W.**

This campaign is for the inspection of the power steering pressure hose gap on certain 2014MY Lancer Evolution and Ralliart models.

Check the "Open Recall" area of the Superscreen each time to be certain of a vehicle's eligibility. Only VINs showing **C1404W** as open are involved in this campaign.

Note: There are less than 200 total VINs in the USA, Canada, and Puerto Rico involved in this campaign.

Campaign Operation No: C1404W\_ \_

Miles/Km: 5000

VIN: JA..... Repair

Service Technician: Emp N

Spec Value \* Duplicate Recall \*

Dealer: 99320 Ref No: VIN:

Claim No: Adj: Claim Status: Incomplete Model and Year:

Save & Continue Main Menu

After entering the required customer data, vehicle information and applicable campaign labor operation number, depending on the "Repair Performed" scenario that is selected from the menu, hitting the "Save and Continue" button will automatically fill-in several fields. Please note that there are 2 possible repair scenarios for this campaign.

<b>CAMPAIGN INFORMATION</b>		C1404W01 Inspect - sufficient clearance
Campaign Operation No	C1404W	2014 Lancer Evolution and 2014 Lancer Ralliart
Miles / KM	5,000	Repair Performed
VIN	JA32W8FV2EU019138	Repair Order No
Repair Date In	06 / 30 / 2014	06 / 30 / 2014
		C1404W02 Inspect - insufficient clearance - Replace Power Steering Pressure Hose
		EX12345

**Campaign Claim Example:**

Follow these instructions to claim for performing the inspection of the power steering pressure hose on certain 2014MY Lancer Evolution and Lancer Ralliart models.

**PARTS:**

Repair scenario #1 requires no parts. Parts are only required for repair scenario #2 (insufficient gap = replace PS pressure hose). The vast majority of involved vehicles will NOT need the power steering pressure hose to be replaced.

Scenario #1 – Inspect Only – sufficient gap No parts needed

Scenario #2 – Inspect – insufficient gap – replace PS pressure hose Parts needed

**LABOR:**

The full campaign labor operation number of either: #1) C1404W01 or #2) C1404W02 and the allowed labor time of either .2 hours for scenario #1, 1.5 hours for scenario #2, will be automatically entered as a result of the 'Repair Performed' selected from the "Vehicle" page.

Scenario	Delete	Sublet	Labor Op	Labor Operation Description	Qty	Hours / Sublet Amt	Total Labor Hrs / Amt
#1			C1404W01	C1404W01 Inspect only - sufficient gap - no repairs needed	1	0.2	0.2 XX.XX
#2			C1404W02	C1404W02 Inspect - insufficient gap - replace power steering tube	1	1.5	1.5 XX.XX



## IMPORTANT SAFETY RECALL

Mitsubishi Motors North America, Inc.

6400 Katella Avenue  
Cypress, CA 90630  
Telephone: 714-372-6000  
www.mitsubishicars.com

This notice applies to your vehicle, \_\_\_\_\_.

This notice has been sent to you in accordance with the requirements of the National Traffic and Motor Vehicle Safety Act.

Date: July, 2014

Dear Mitsubishi Owner,

**Reason for notice:** Mitsubishi Motors North America, Inc. (MMNA) has decided that a defect which relates to motor vehicle safety exists in certain 2014 Lancer Evolution and Lancer Ralliart vehicles. Due to a manufacturing error, the power steering pressure hose assembly may have been installed with insufficient clearance to the crossmember brace, possibly causing the power steering hose assembly to rust from abrasive contact between the two components.

A pin hole could develop on the power steering hose assembly and allow for power steering fluid leakage. This condition results in increased steering effort and potential for a fire in the presence of an ignition source.

**What you should do:** Please contact your local Authorized Mitsubishi Motors dealer and schedule an appointment to have the power steering hose assembly inspected. When you bring your vehicle in, please show the dealer this letter. (If you misplace this letter, the dealer will still make this inspection/replacement to your vehicle, free of charge.)

**What your dealer will do:** The dealership will inspect the power steering pressure hose assembly to determine if there is sufficient clearance to the crossmember brace. If the clearance is insufficient, the dealer will replace the power steering pressure hose assembly.

**How long will it take?** The time needed for this inspection is approximately 0.5 hrs. If the power steering pressure hose assembly requires replacement, the time needed is approximately 1.5 hrs. The dealer may need your vehicle for a longer period of time due to service scheduling issues, but every effort will be made to minimize your inconvenience.

If you experience any problem having your vehicle repaired promptly and/or at no charge, please inform us by calling the Mitsubishi Customer Relations Department at 888-648-7820. Hours: Monday through Friday 7 a.m. to 4 p.m. (Pacific Time)

If, after contacting Mitsubishi Customer Relations, you still have a problem getting this repair made promptly and/or without charge, write to the Administrator, National Highway Traffic Safety Administration, 1200 New Jersey Avenue SE, Washington, D.C. 20590, or call the toll-free Vehicle Safety Hotline at 1-888-327-4236 (TTY: 1-800-424-9153), or go to <http://www.safercar.gov>.

If you have already encountered a problem with the power steering pressure hose assembly and had it replaced as a result of this specific condition and have paid for the repair, you may send your original receipts and/or other adequate proof of payment to the following address for reimbursement consideration:

Mitsubishi Customer Relations Department, P.O. Box 6400, Cypress, CA 90630-0064

**Notice to Lessors:** If you are a lessor of five or more leased vehicles as of the date of this letter, you have an obligation under federal law, (49 CFR Part 577), to provide each lessee of the above referenced vehicle with a copy of this letter by first class mail within ten days of receipt. Further, you must maintain a record which identifies each lessee to whom you sent a copy of this letter, the date you sent it, and the vehicle identification number (VIN) of the subject vehicle.

We appreciate your prompt attention to this matter.

Sincerely,

Mitsubishi Motors North America, Inc.

C1404W