

# Installing Tire Carrier QAAR 7841

**Read through instructions thoroughly before beginning.**

**Caution: Tire carrier must be locked in the downward position with the pin when removing the tire.**

**Instructions:**

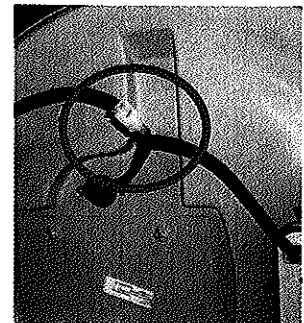
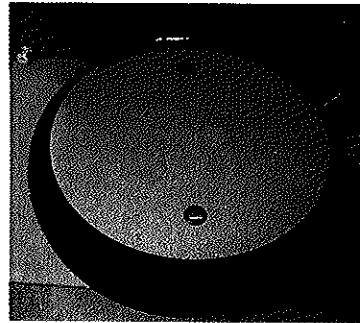
- 1) Apply parking brake.
- 2) Unplug chassis power disconnect plug.  
(beside the accelerator pedal)
- 3) Cut wires & loom roughly 12" (300mm)  
from where they exit the bottom of the  
carrier.



- 4) Lower spare tire carrier and lock it in the  
down position.



- 5) Remove continental ring and plastic tire cover. When removing the tire cover, disconnect the wires (at connection) and pull the wires up, out of the post. (save the harness for reinstall)



- 6) Remove the tire carrier table mount assembly and spare tire from carrier.

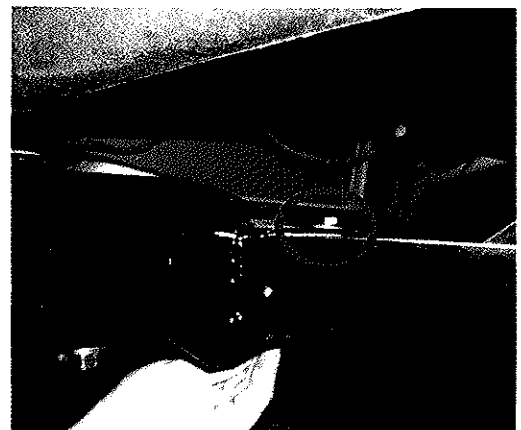


- 7) **Caution: Tire carrier is under extreme spring tension.**

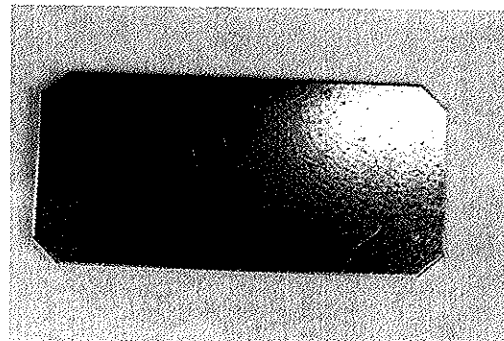
Grasp tire carrier firmly at location indicated by "x". Carefully remove locking pin and allow carrier to return slowly to upright position.



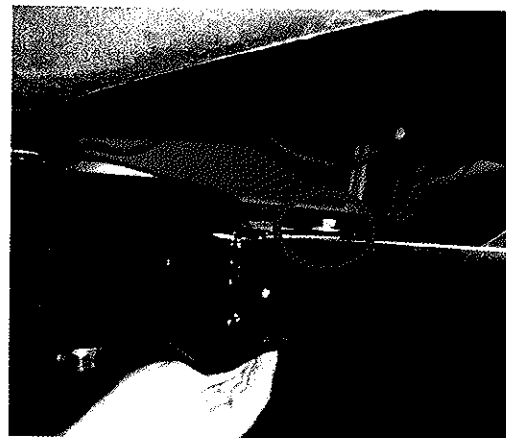
- 8) Loosen the two bolts clamping the spare tire carrier to the hitch. (save bolts for reinstall)
- 9) Remove tire carrier by sliding it off the hitch tube.



10) Replace with revised tire carrier (B52914 Rev 3) onto the hitch tube. If the carrier is loose on the hitch use the galvanized shims provided in between the top side of the hitch and the tire carrier.



11) Loosely install clamp bolts (do not tighten at this time).



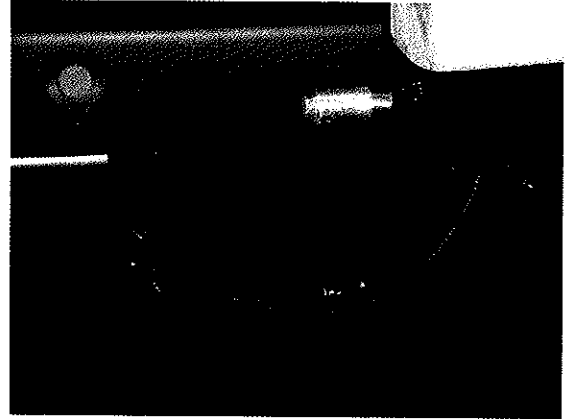
12) Run the wires (from step 5) down the new carrier (lower side hole).



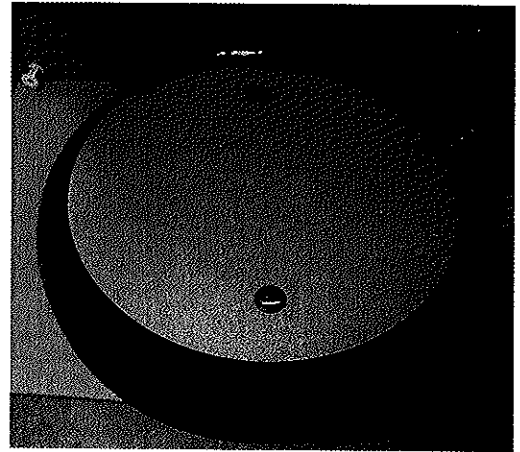
13) Solder the wires back together and protect each wire with electrical tape.



- 14) Put the loom provided over the wires at the bottom of the carrier and push it up into the carrier tube until the loom covers the solder connections. (all exposed wire needs to be protected by loom)



- 15) Install tire and tire carrier table mount assembly up on carrier.

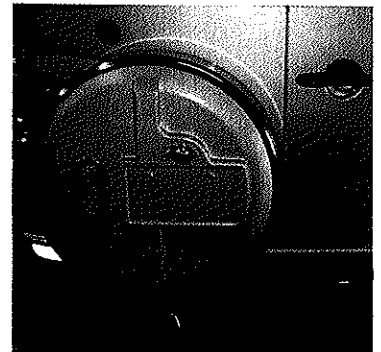


- 16) Install plastic tire cover, reconnecting the wires and install the stainless steel ring (with the rubber covered edge out).

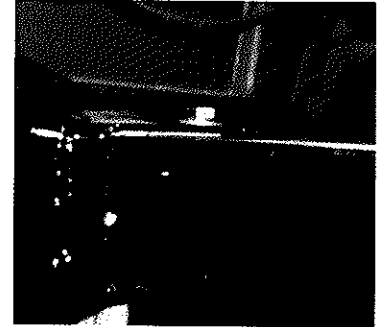


- 17) Unlock tire carrier and put in upright position.

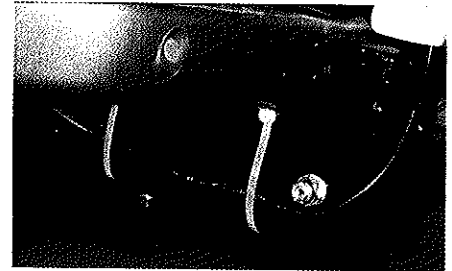
- 18) Position tire carrier to even with the edge of the door.



- 19) Tighten carrier bolts at hitch tube and torque to 23 foot pounds.



- 20) Make sure the wires won't become pinched in the carrier, then use the zip ties provided (connecting two together to make one long one) to secure the wires to the carrier.



- 21) Reconnect Chassis power disconnect plug.  
22) Check function of the lights. It should operate as a clearance light only.  
23) Check function of passenger side rear door. (needs to clear the tire carrier when opening)



**Tools Required:** 2 9/16" Wrenches, Torque wrench & 9/16" socket, Soldering gun & solder, Electrical tape, Rubber Mallet

**In the Kit:** Tire Carrier (B52914), 4 Zip Ties (126-6053), Loom (126-6605), 2 Shims (B52914-07)

Job Time: 45 Minutes