

Savaria Vehicle Group Service Bulletin	SB-101: Caravan Axle Crack inspection	Page 1 of 4
---	--	------------------------

Scope:

This service bulletin provides instructions for inspecting the rear axle for cracks and recording that information on a crack inspection report.

Effectivity:

This service bulletin is applicable to 2008 through 2010 Dodge Grand Caravan, Chrysler Town & Country and Volkswagen Routan which were converted to wheelchair accessible vehicles by The Liberty Motor Company. It is only applicable to those vehicles with fiberglass lowered floors and lowered rear suspension. This is not applicable to Liberty “Caravan Advantage” conversions which used modified stock vehicle axles with modified track bar attachments.

Time to Complete:

This service bulletin can be completed with 1/2 labor hour(s). Contact the Savaria Vehicle Group (at 800-561-9600) if issues arise causing the allotted time to be exceeded.

Parts List:

No parts are required.

Tools and Materials:

Hoist

READ THE ENTIRE PROCEDURE BEFORE BEGINNING

- 1 Thoroughly inspect the axle and locate all cracks. Figures 1, 2, 3, and 4 identify regions on the axle to inspect for cracks. Each area of concern is numbered and circled on the drawing. Record findings in Table I; marking the table with a check for if a crack is present or not in any of the 20 regions. At the end of the table make note of any other damage or condition discovered elsewhere on the axle. Note that when cracks form, they would be found beside welds, likely originating at the edge of the material.
- 2 Add the VIN, name of person inspecting the axle, and the vehicle mileage, then fax the table page to Fax number 905-799-5548.


Prepared by:	Paul Collett	Issue Date:	30-Jan-14	Revision: /
	SAVARIA VEHICLE GROUP • 2 Walker Drive • BRAMPTON, ON • L6T 5E1 • CANADA This document and the information contained herein is the property of Savaria Vehicle Group and may not be copied or reproduced for use other than that for which it is supplied without written authority of the Savaria Vehicle Group.			

Table I: Crack Inspection Record			
VIN:			Date:
Inspected by:			Phone:
Mileage:		km / miles (circle)	
Region	No Crack	Cracked	Location
1			Welds at bottom of axle, at ends of beam channels See Figure 2
2			
3			
4			
5			Welds associated with spring housing general attachment to beam channels See Figure 1 and Figure 3
6			
7			
8			
9			
10			
11			Welds associated with trailing arm attachment See Figure 1 and Figure 3
12			
13			
14			
15			Welds at top of axle, at ends of beam channels See Figure 4
16			
17			
18			
19			
20			
OTHER			Note other observations:

Fax Report to: 1-905-799-5548

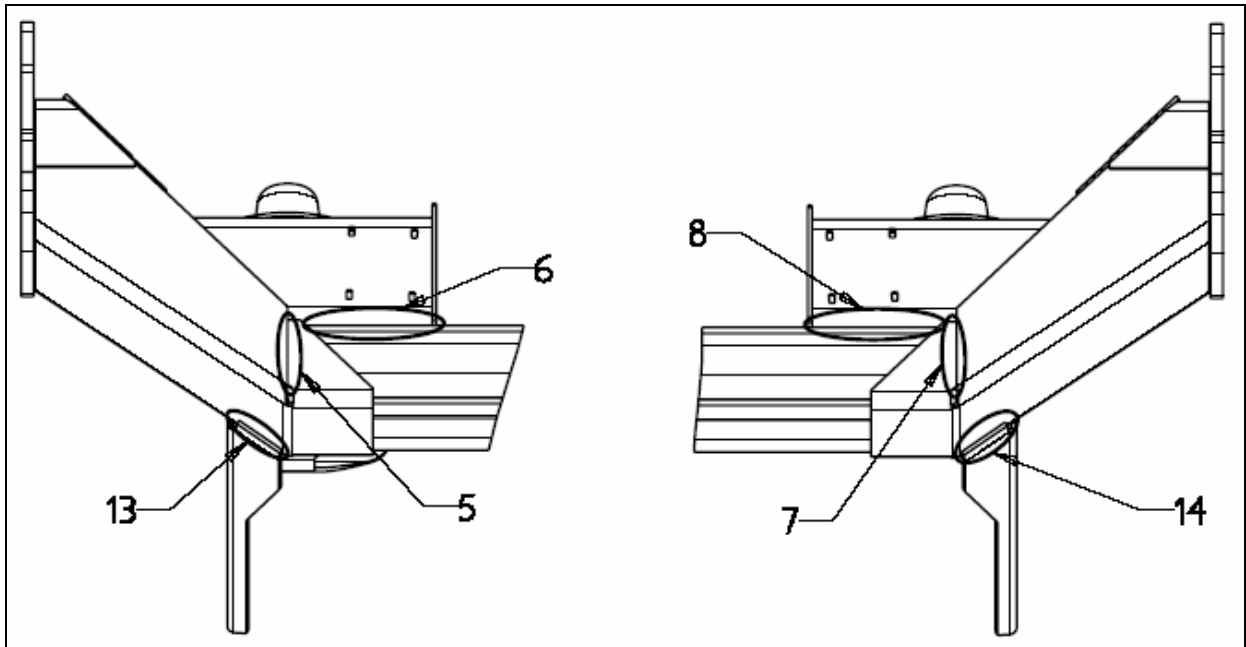


Figure 1: Rear view of lowered axle.

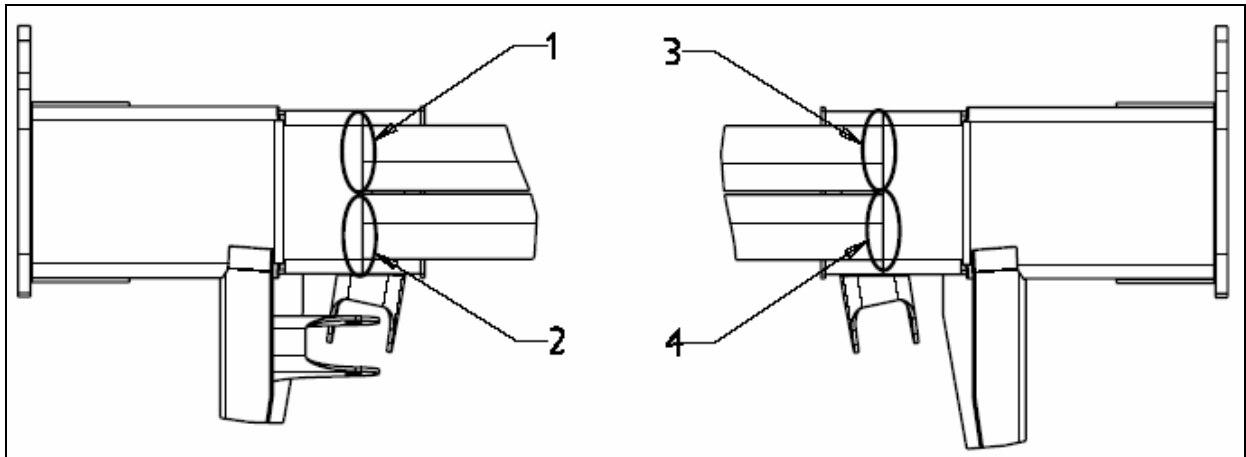


Figure 2: Bottom view of lowered axle

Prepared by:

Paul Collett

Issue Date:

30-Jan-14

Revision: /



SAVARIA VEHICLE GROUP • 2 Walker Drive • BRAMPTON, ON • L6T 5E1 • CANADA

This document and the information contained herein is the property of Savaria Vehicle Group and may not be copied or reproduced for use other than that for which it is supplied without written authority of the Savaria Vehicle Group.

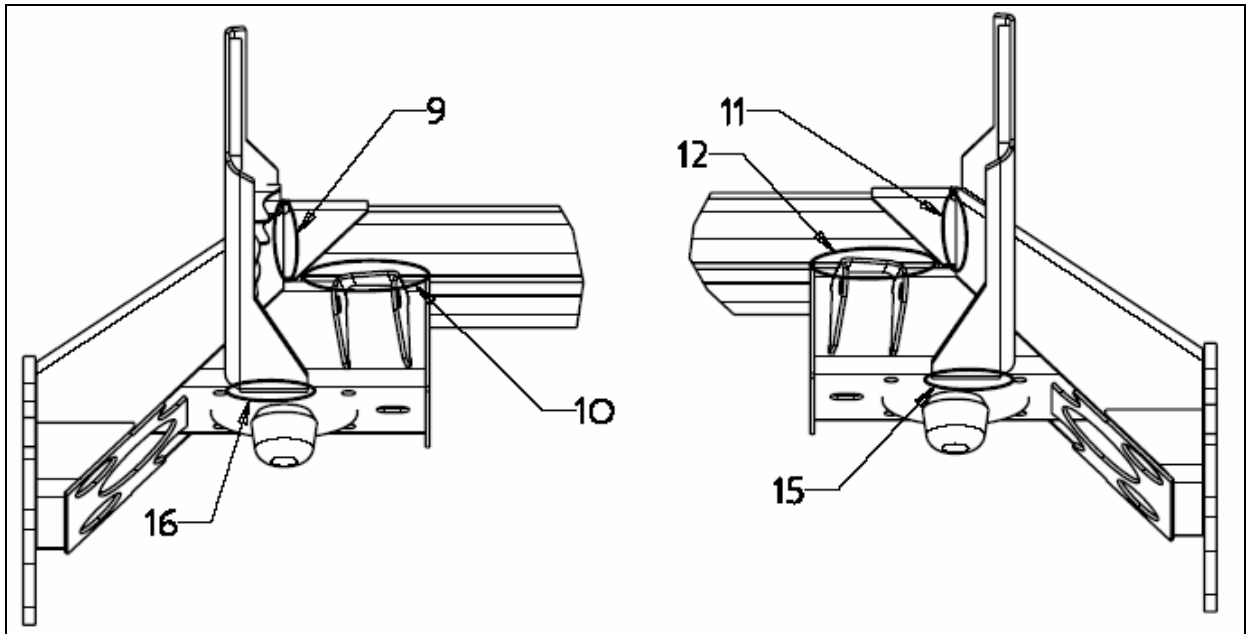


Figure 3: Front view of axle

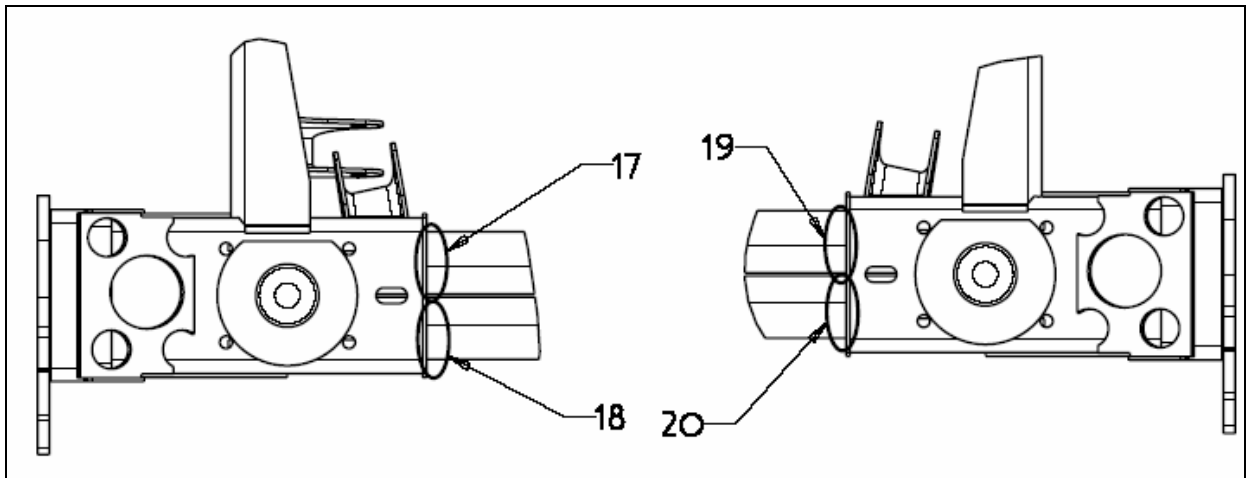



Figure 4: Top view of axle

REVISION LOG

ISSUE NO.	ISSUE DATE	DESCRIPTION OF CHANGE
/	30-Jan-14	First Release

Prepared by:	Paul Collett	Issue Date:	30-Jan-14	Revision: /
 SAVARIA VEHICLE GROUP • 2 Walker Drive • BRAMPTON, ON • L6T 5E1 • CANADA This document and the information contained herein is the property of Savaria Vehicle Group and may not be copied or reproduced for use other than that for which it is supplied without written authority of the Savaria Vehicle Group.				