

SurePower Battery Equalizer Recall

Identification and Installation Instructions

Follow these steps to identify the SurePower battery equalizers at issue, and to complete the recall on your equipment.

1. Verify that your equalizer is covered by the recall. Equalizers covered by the recall will look like the equalizer pictured below:

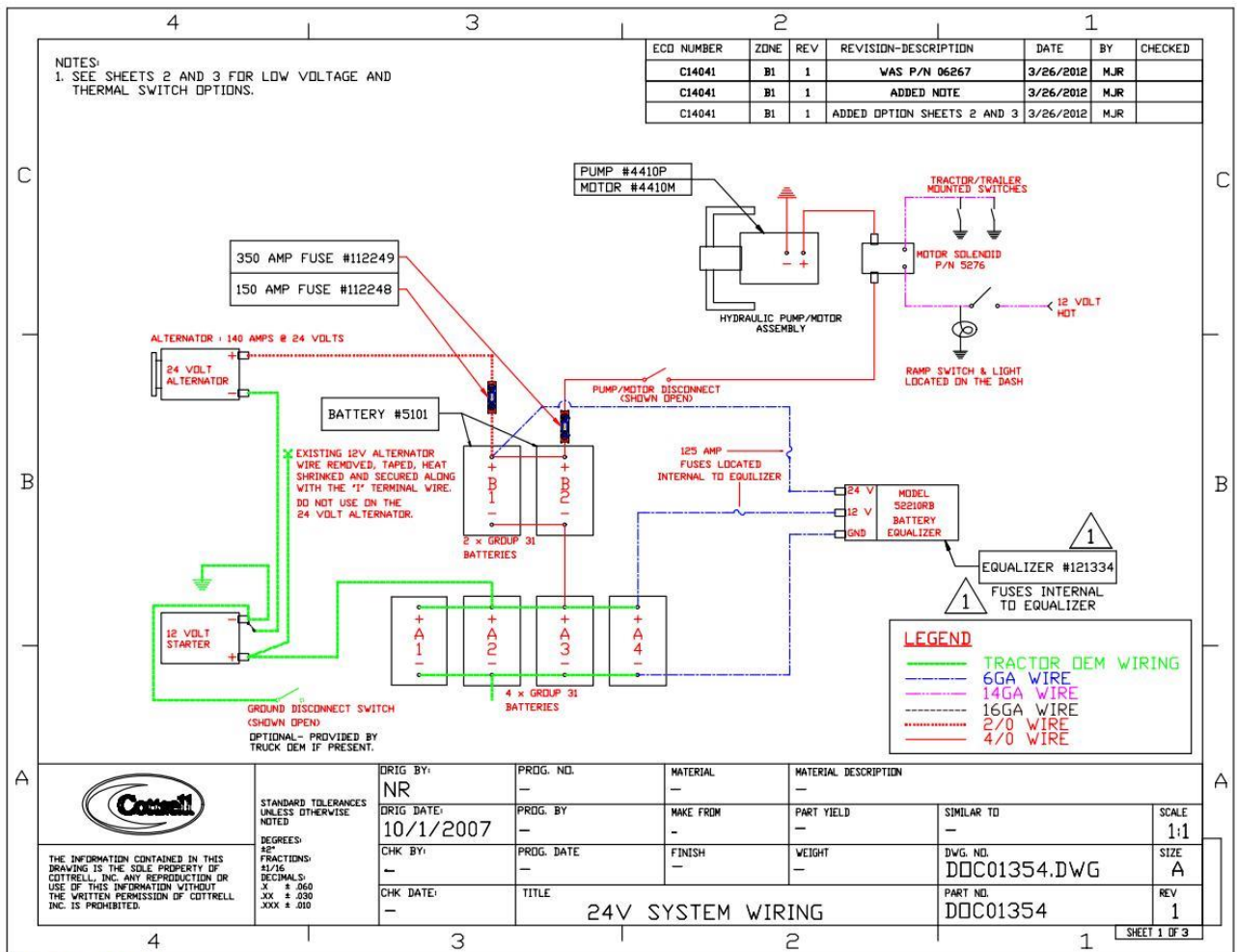


The model of the equalizer will be on the equalizer ID label.



Equalizers with any of the following model numbers are covered by the recall: 52208, 52208RB, 52210, and 52210RB.

2. Disconnect the 12V and 24V power cables as well as the ground cable. Label which cable is attached to the 24V terminal and which one is attached to the 12V terminal to eliminate the possibility of crossing them when reconnecting. Note, these must first be disconnected at the battery terminal ends and then the equalizer ends of the cables to minimize the possibility of electrical shock. See the drawing below for reference.



NUMBER:DOC01354

- Once the cables have been fully disconnected, the equalizer can be removed and replaced. The replacement equalizer will look like the picture below and will drop in to the same space as the original equalizer. Fasteners can be reused unless in poor condition, in which case they must be replaced.



4. Reconnect the 12V and 24V power cables as well as the ground cable, connecting them first at the equalizer and last at the batteries. Note: Some equalizers covered by the recall will have block fuses installed at the 12V and 24V equalizer terminals. Discard these block fuses if so equipped. The replacement equalizer is built with internal fuses that perform the same function.
5. Verify that the 24V system is working properly by checking voltage at the 12V and 24V terminals of the equalizer with a volt meter.