



IMPORTANT SAFETY RECALL

September 2014

Dear General Motors Customer:

This notice is sent to you in accordance with the National Traffic and Motor Vehicle Safety Act.

General Motors has decided that a defect which relates to motor vehicle safety exists in certain 2011-2014 model year Cadillac CTS vehicles. As a result, GM is conducting a safety recall. We apologize for this inconvenience. However, we are concerned about your safety and continued satisfaction with our products.

IMPORTANT

- This notice applies to your 2011-2014 model year Cadillac CTS vehicle VIN: _____.
- Your vehicle is involved in GM safety recall 14497.
- Schedule an appointment with your Cadillac dealer.
- This service will be performed for you at **no charge**.

Why is your vehicle being recalled?

If your key ring is carrying added weight and the vehicle goes off road or experiences some other jarring event, or if you unintentionally bump the key ring or items attached to the key ring with your knee, the key may unintentionally move away from the “run” position. If this occurs, engine power, power steering and power braking may be affected, increasing the risk of a crash. The timing of the key movement out of the “run” position, relative to the activation of the sensing algorithm of the crash event, may result in the airbags not deploying, increasing the potential for occupant injury in certain kinds of crashes.

What will we do?

Since the installation of the key rings can be performed easily, and to reduce your inconvenience, we have included the key rings and installation instructions with this letter. If you desire, however, your dealer will install the key rings at no charge.

Your Cadillac dealer will add two key rings to the vehicle keys. This service will be performed for you at no charge. Because of service scheduling requirements, it is likely that your dealer will need your vehicle longer than the actual service correction time of approximately 15 minutes.

What should you do?

If you install the key rings yourself, please complete the enclosed prepaid response form and return it to us in the mail. We will close the recall on your vehicle.

If you would like your dealer to install the key rings, you should contact your Cadillac dealer to arrange a service appointment as soon as possible.

Until your vehicle is serviced, you should remove all items from all of the vehicle's key rings, including the key fob, leaving only the ignition key. In addition it is very important that drivers adjust their seat and steering column to allow clearance between their knee and the ignition key.

Do you have questions?

If you have questions or concerns that your dealer is unable to resolve, please contact the appropriate Customer Assistance Center at the number listed below.

Division	Number	Text Telephones (TTY)
Cadillac	1-800-458-8006	1-800-833-2622
Guam	65-6267-1752	
Puerto Rico – English	1-800-496-9992	
Puerto Rico – Español	1-800-496-9993	
Virgin Islands	1-800-496-9994	

If after contacting your dealer and the Customer Assistance Center, you are still not satisfied we have done our best to remedy this condition without charge and within a reasonable time, you may wish to write the Administrator, National Highway Traffic Safety Administration, 1200 New Jersey Avenue, SE., Washington, DC 20590, or call the toll-free Vehicle Safety Hotline at 1.888.327.4236 (TTY 1.800.424.9153), or go to <http://www.safercar.gov>. The National Highway Traffic Safety Administration Campaign ID Number for this recall is 14V394.

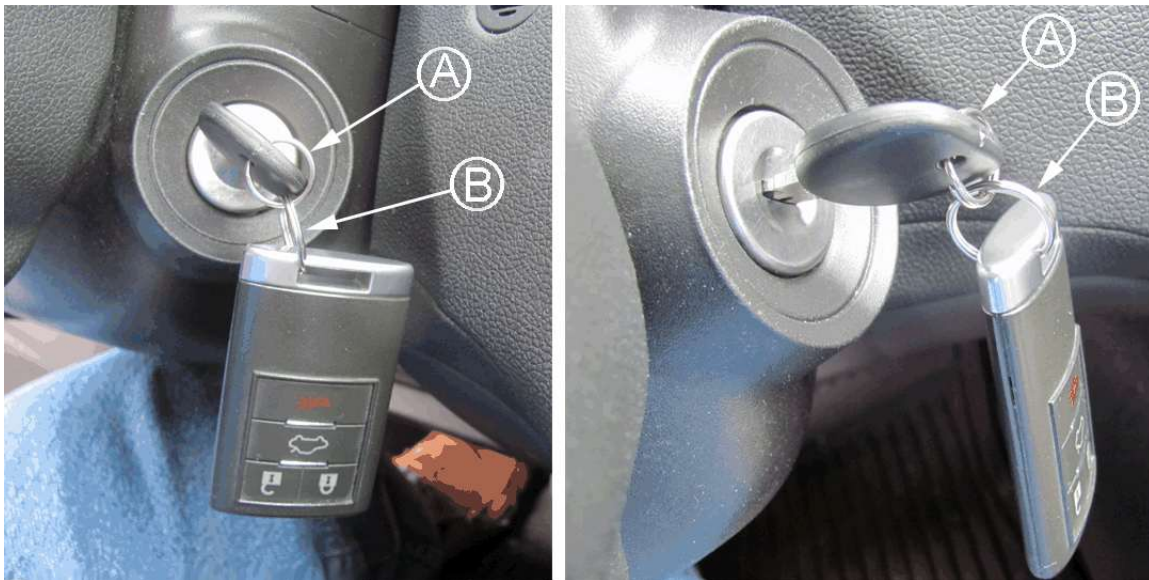
Federal regulation requires that any vehicle lessor receiving this recall notice must forward a copy of this notice to the lessee within ten days.

Jim Moloney
General Director,
Customer and Relationship Services

Key Ring Installation Instructions

(Kit contains key rings for two sets of keys)

1. Remove the ignition key and remote keyless entry (RKE) transmitter from the original key ring(s).
2. Discard the original key ring(s).
3. Install one of the enclosed smaller key rings (A) on the ignition key.
4. Install one of the enclosed larger key rings (B) onto the RKE transmitter.



3966144

5. Attach the smaller key ring (A) to the larger key ring (B). Refer to the photograph to view the correct key ring assembly.
6. Repeat this procedure on your second ignition key and RKE transmitter.