



## IMPORTANT SAFETY RECALL

Consumer Affairs  
P.O. Box 685003  
Franklin, Tennessee 37068-5003  
A Division of Nissan North America, Inc.

### OWNER NOTIFICATION

### NHTSA Recall 14V-129

Dear Infiniti QX80 owner:

This notice is sent to you in accordance with the requirements of the National Traffic and Motor Vehicle Safety Act. Infiniti has decided that the Certification label on your Model Year 2014 Infiniti QX80 fails to conform to one of the requirements specified in Federal Motor Vehicle Safety Standard (FMVSS) No. 110 "Tire Selection and Rims." Our records indicate that you own or lease the Infiniti vehicle identified on the inside of this notice.

#### Reason for Recall

The Certification label located on the driver's side door pillar near the door latch of your vehicle does not contain the correct Gross Axle Weight Rating (GAWR) information as required by the applicable regulation. Adhering to the GAWR information on the Certification label is important because overloading the vehicle's axle weight rating may increase the likelihood of a crash. To address this Infiniti is providing a corrected certification label containing the required information.

#### What Infiniti Will Do

Provided with this notification is a VIN-specific replacement Certification label that contains the correct GAWR for your vehicle. Also included (on the reverse side of this letter) are instructions on how to affix it.

#### What You Should Do

Please replace the Certification label on your vehicle with the one included with this notice. Instructions for affixing the new label are on the reverse side of this letter.

If you prefer, you may contact your Infiniti retailer and make an appointment to have the Infiniti retailer affix the new label for you at no charge for parts or labor. Please bring this notice and the replacement label with you to the service appointment. If the retailer fails to, or is unable to make the necessary repairs free of charge, you may contact Infiniti Consumer Affairs Department, P.O. Box 685003, Franklin, TN 37068-5003.. The toll free number is 1-800-662-6200.

You may also submit a complaint to the Administrator, National Highway Traffic Safety Administration, 1200 New Jersey Avenue, SE., Washington, DC 20590; or call the toll-free Vehicle Safety Hotline at 1-888-327-4236 (TTY: 1-800-424-9153); or go to <http://www.safercar.gov>.

Federal law requires that any vehicle lessor receiving this recall notice must forward a copy of this notice to the lessee within ten days.

Thank you for your cooperation. We are indeed sorry for any inconvenience this may cause you.

## Installation Instructions

### NOTE:

- Enclosed please find a replacement Certification label **specific to your vehicle**. Make sure the VIN on the new Certification label matches the VIN on the old Certification label.
- **DO NOT REMOVE THE EXISTING LABEL.** Affix the replacement label over the existing label.

1. Park the vehicle in a safe place with the ignition OFF, the parking brake ON, and your automatic transmission in "P" (manual transmissions in gear).
2. Open the driver's door.
3. Locate the existing Certification label (see figure 1)
4. Clean the label and the area around it with a mild detergent and water.

### NOTE:

- Care should be taken not to use harsh chemicals that may damage the existing label.
- It is important the surface be free of dirt and oil to ensure proper adhesion of the new label.



Figure 1

5. Completely dry the label and the area around it.
6. Peel the new label from the backing sheet and affix it directly over the top of the existing label (see Figure 2).

**NOTE:** The adhesive on the label is permanent. Extra care should be taken when applying the new placard since it cannot be moved once it is attached.

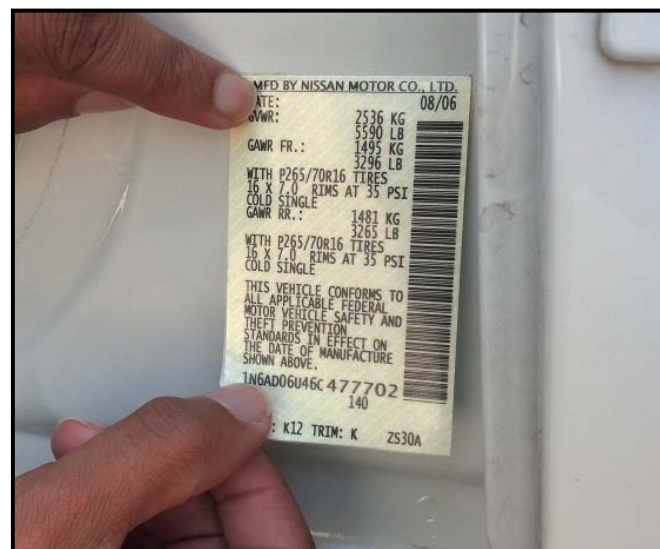


Figure 2

