

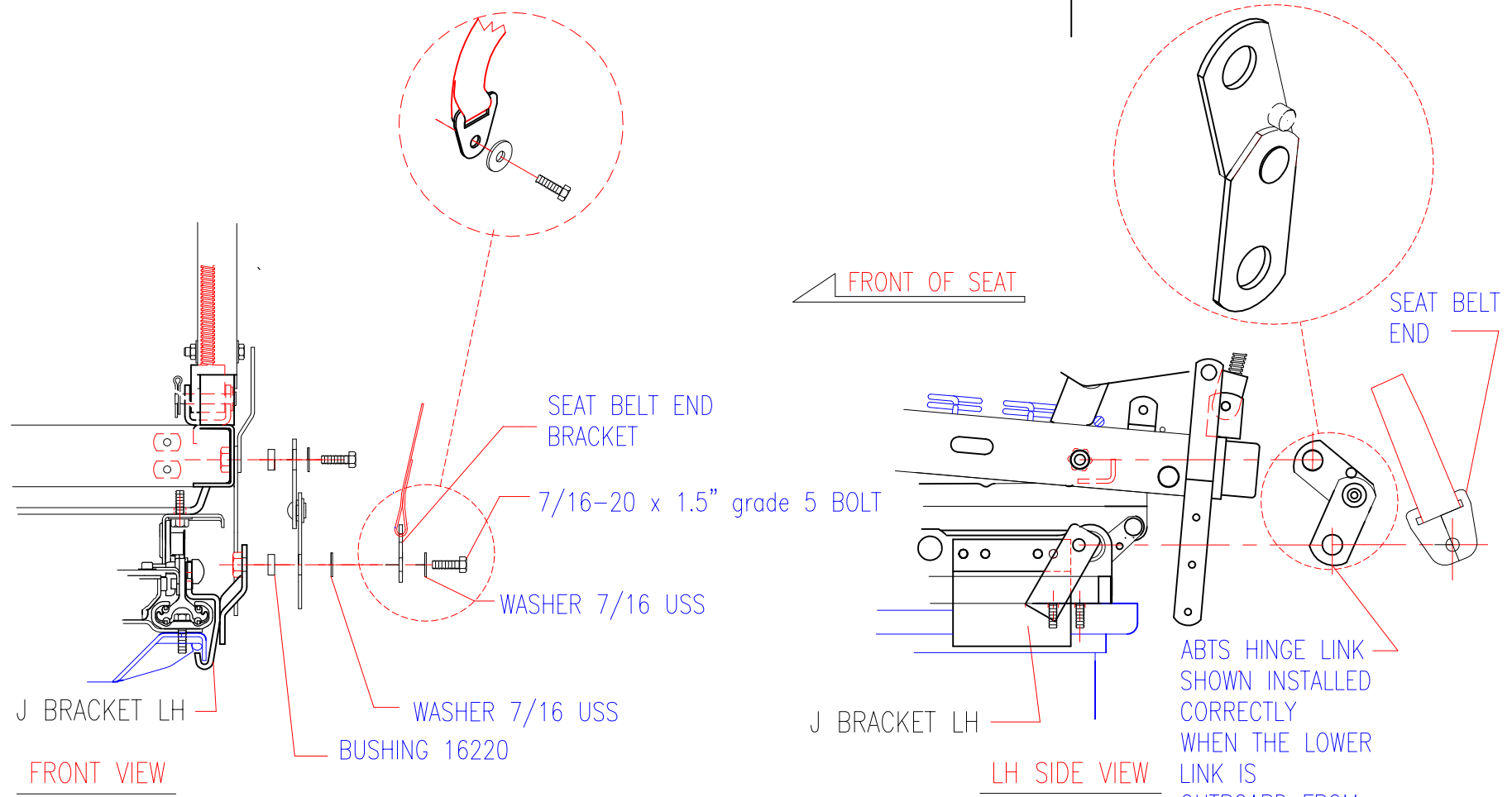
4

3

2

1

REVISIONS				
ZONE	REV	DESCRIPTION	DATE	APPROVED



THIS DRAWING SHOWS THE CORRECT HINGE INSTALLATION FOR ABTS SEATING.

LEFT SIDE OF DRIVERS SEAT SHOWN
RIGHT SIDE PASSENGER SEAT THE SAME.

REFERENCE NHSTA RECALL # 14E009

This drawing is the property of Villa International all rights reserved.

VILLA INTERNATIONAL				
ABTS HINGE LINK, RECALL INSPECTION				
JGM 4.28.14	SIZE	FSCM NO.	DWG NO.	REV
	SCALE		01	

4

3

2

1

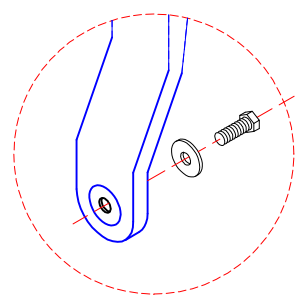
4

3

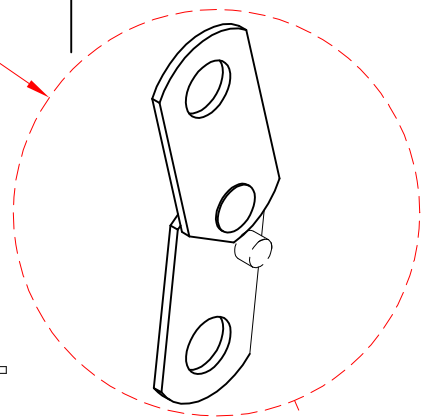
2

1

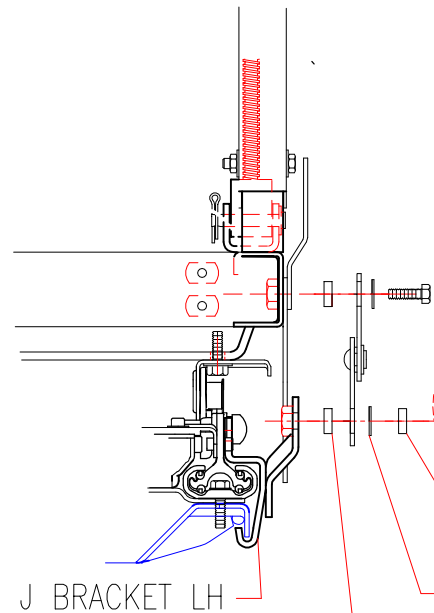
REVISIONS				
ZONE	REV	DESCRIPTION	DATE	APPROVED



ABTS HINGE LINK SHOWN INSTALLED INCORRECTLY WHEN THE LOWER LINK IS INBOARD TOWARD THE SEAT FRAME.



FRONT OF SEAT



FRONT VIEW

BELT BUCKLE INSIDE SHEATH

7/16-20 x 1.5" grade 5 BOLT*

WASHER 7/16 USS*

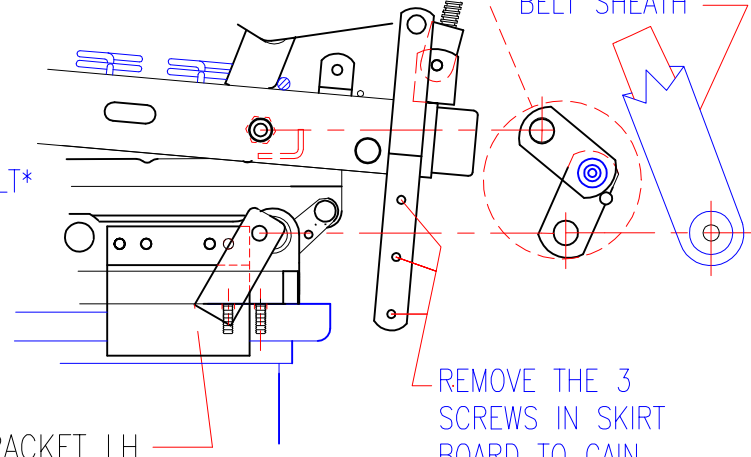
BELT SHEATH*

BUSHING 16220*

WASHER 7/16 USS*

BUSHING 16220*

J BRACKET LH



LH SIDE VIEW

BELT SHEATH

REMOVE THE 3 SCREWS IN SKIRT BOARD TO GAIN ACCESS TO LINK BOLT.

J BRACKET LH

NOTE:
 THIS REPAIR IS INTENDED ONLY FOR THOSE ABTS HINGES INSTALLED INCORRECTLY AS SHOWN IN THE LH SIDE VIEW.
 * IDENTIFIES REPAIR KIT HARDWARE.
 REMOVE TWIST IN SEAT BELT BEFORE INSTALLING SHEATH AND FASTENING END.
 TIGHTEN REPLACEMENT BOLT TO 20 FT-LB.
 LEFT SIDE OF DRIVERS SEAT SHOWN
 RIGHT SIDE PASSENGER SEAT THE SAME.

REFERENCE NHSTA RECALL # 14E009

This drawing is the property of Villa International all rights reserved.

VILLA INTERNATIONAL				
ABTS HINGE LINK, RECALL REPAIR				
JGM 4.21.14	SIZE	FSCM NO.	DWG NO.	REV
	SCALE		02	

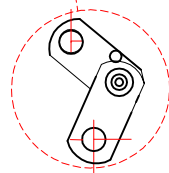
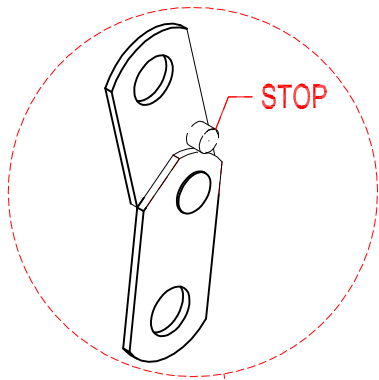
4

3

2

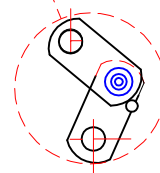
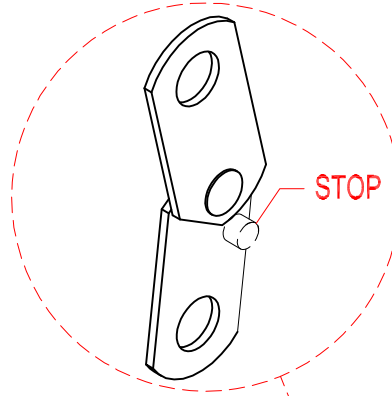
1

CORRECT INSTALLATION
OF THE ABTS HINGE LINK.



THE ABTS HINGE LINK IS INSTALLED
CORRECTLY
WHEN THE UPPER LINK WITH THE STOP IS
TOWARD THE SEAT FRAME AND THE LOWER
LINK IS OUTBOARD FROM THE SEAT FRAME.
NO REPAIR IS REQUIRED.

INCORRECT INSTALLATION
OF THE ABTS HINGE LINK.



THE ABTS HINGE LINK IS INSTALLED
INCORRECTLY
WHEN THE UPPER LINK IS
OUTBOARD FROM THE SEAT FRAME AND THE
LOWER LINK WITH THE STOP IS INBOARD FROM
THE SEAT FRAME.
USE REPAIR KIT 14E-009T/B FOR REPAIR.

LEFT SIDE OF DRIVERS SEAT SHOWN
RIGHT SIDE PASSENGER SEAT THE SAME.

REFERENCE NHSTA RECALL # 14E009.

REVISIONS				
ZONE	REV	DESCRIPTION	DATE	APPROVED

This drawing is the property
of Villa International all
rights reserved.

VILLA INTERNATIONAL				
ABTS HINGE LINK, INSPECTION				
JGM 4.29.14	SIZE	FSCM NO.	DWG NO.	REV
	SCALE		04	

VILLA INTERNATIONAL
RECALL REPAIR 14E-009



REPAIR KIT FASTENERS
AND SHEATH INSERTED OVER SEAT BELT BRACKET



REPAIR FASTENER & SHEATH LOCATION
FROM KIT 14E-009



FASTENERS AND SHEATH ASSEMBLED INTO LINK



COMPLETED REPAIR
TIGHTEN BOLT TO 20 ft-lb