

Federal Recall Information

14KWD

Supplier

Sure Power Inc.

Description

Recall 14KWD – K270/K370 chassis build between November 23, 2011 and January 2, 2014 with the SurePower 12 – 24 Volt Power Converter.

Release Date

3/28/2014

Introduction

Kenworth Truck Company has decided that a defect which relates to motor vehicle safety exists in certain Kenworth K270 and K370 vehicles built between November 23, 2011 and January 2, 2014. A total of 483 US chassis and 52 Canadian chassis are involved in this recall. The chassis list and a copy of the customer letter are attached. DWWC and SIR indicate chassis involved in this recall with the designator of "**14KWD**".

Situation

Certain vehicles are equipped with 12 – 24 volt battery equalizers or DC-DC converters containing a potting compound that is capable of conducting electricity after being exposed to heat. Once electrically conductive, the material is capable of melting and burning, increasing the risk of a fire.

Resolution

Replace defective 12-24 volt converters.

It is a violation of Federal law for a dealer to sell or lease new vehicles covered by this recall until the defect or noncompliance has been corrected.

Warranty

DWWC and SIR will indicate chassis involved in this recall with the designator of "**14KWD**" in the campaign field.

CLAIM CODING

For Field...	Enter...
Failure Location	032-001-050
Failure Type	705 – Safety Recall
Claim Type	C
Vendor Code	14KWD
Labor	SRT 032-XXX @ 1 hours Add or Replace
Responsibility Code	05

Parts

Parts are available through PACCAR Parts (via normal parts ordering) and reimbursed by this recall at DealerNet + 30% markup.

Each chassis has one of three possible converter part numbers. Check the part number of the converter installed on each chassis to determine the correct replacement part.

Original P/N	New P/N (s)	Part Description
12040C00	12040C10 SP640293	Converter Harness
12040E00	12040E10 SP640294	Equalizer Harness
12025E00	12025E00 (Unchanged)	Control

Note: Destroy take-off parts by breaking off a terminal stud, making the part inoperable.

6/6/2014 Revision: Added information about collecting component serial numbers and destroying take-off parts.

Labor

Kenworth will reimburse the dealer for 1.0 hours of labor to R&R the converter located in the battery box.

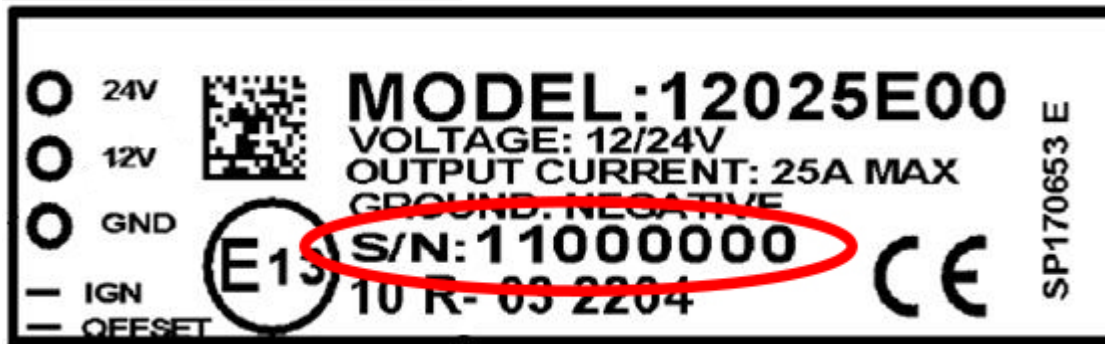
Procedure

Take all safety precautions when working with electrical circuits. Disconnect the negative battery cable(s) to reduce the chance of an electrical shock or voltage spike to the equipment.

The converter is located in the same box as the batteries.

Please see the procedure below for more detailed steps.

Note: Once the take-off part is removed, obtain the serial number of the old part. File a long claim in DWWC and record the serial number in the "Complaint/Cause/Correction" field. If incorrect or duplicate serial numbers are submitted, the dealer will be debited back the full amount of the claim.



Attachments

 [Customer Letter](#)

 [Chassis List](#)

 [Procedure](#)

Authored by: GH