



**RE-NOTIFICATION OF UNREMEDIED SAFETY
DEFECT ON YOUR BLUE BIRD BUSES**

DATE: AUGUST 15, 2014

TO: BLUE BIRD OWNERS

SUBJECT: RECALL R13WD GRID HEATER POWER CABLE MAY CONTACT
FRAME RAIL

According to our records, the important recall remedy work necessary to remove the safety defect on your affected Blue Bird buses you own or operate has not been performed.

This safety defect concerns the main grid heater power cable routing on certain 2008 through 2011 model year All American rear engine model school and non-school buses equipped with Cummins ISB07 engines. On the subject buses, the grid heater power cable may contact the chassis frame rail.

If the grid heater power cable contacts the chassis frame rail it could potentially chafe against the frame rail thereby creating a direct short with potential for fire. Your affected buses are identified by both Blue Bird body number and VIN on the enclosed yellow and pink reply sheets for Recall R13WD.

We urge you to have this recall remedy applied to your affected buses as soon as possible. This recall work will be performed at no cost to you. Please contact your Blue Bird dealer to have this recall work performed by an authorized dealer.

Alternatively, if you would prefer to perform the remedy yourself, please consult the attached Recall R13WD notification that contains the instructions.

Once you have completed the work, please complete and mail the enclosed pink reply sheet to us in the enclosed postage paid pink reply envelope so we may update our recall records.

Check Column "A" on the pink reply sheet if the grid heater power cable was inspected and, if necessary, re-oriented.

Check column "B" on the pink reply sheet if the harness was inspected found damaged and replaced. Contact Blue Bird Recall Administration for a replacement harness, if needed.

Note: the United States Department of Transportation, National Highway Traffic Safety Administration is reviewing Blue Bird's completion rate for R13WD. It may decide to contact those owner/operators that have not had the free recall repair work completed within 30 days of this notice.

Thank you for your prompt attention to this matter.

Sincerely,

A handwritten signature in cursive script that reads "Bill Coleman". The signature is written in dark ink and is positioned below the word "Sincerely,".

Bill Coleman
Corporate Recall Administrator



BLUE BIRD

R13WD

May 03, 2013

Dear Blue Bird Owner:

This notice is sent to you in accordance with the requirements of the National Traffic and Motor Vehicle Safety Act.

Blue Bird has decided that a defect which relates to motor vehicle safety exists in certain 2008 through 2011 model year All American rear engine model school and non-school buses manufactured from August 09, 2007 through June 09, 2010 and equipped with Cummins ISB07 engines.

On the subject buses, the grid heater power cable may contact the chassis frame rail and potentially chafe against the frame rail thereby creating a short. A short could increase the risk of a fire which could cause property damage, personal injury or death. Blue Bird is conducting a recall to correct this defect.

Buses with this defect must be inspected and, if necessary, modified according to the enclosed instructions for Recall R13WD.

You may contact your Blue Bird dealer to arrange to have this recall performed. Or, if you prefer, you may perform this recall yourself or have a qualified repair facility convenient to you perform this recall. A qualified technician should perform this recall.

Your Blue Bird bus(es) affected by this recall are identified by body serial number(s) on the enclosed reply sheets. If you no longer own the subject bus(es), please complete the sold to section of the **labor reimbursement** sheet and return to Blue Bird in the enclosed pink postage prepaid envelope.

To receive replacement grid heater power cables, if required, you must return the yellow recall reply sheet to Blue Bird in the pink, self addressed, postage prepaid envelope. Be sure to provide a valid shipping address as UPS does not deliver to P.O. Boxes.

Labor time to inspect the routing of the grid heater power cable and, if necessary, re-orient cable is 0.3 hours (18 minutes) per bus.

Labor time to inspect, remove and replace a damaged grid heater power cable, if necessary, is 0.6 hours (36 minutes) per bus.

BLUE BIRD BODY COMPANY

P.O. Box 937 – 402 Blue Bird Blvd – Fort Valley, Georgia – (478) 825-2021

Reimbursement for labor may be obtained by completing the pink "**Labor Reimbursement**" sheet provided and returning it to Blue Bird in the enclosed **pink** postage prepaid envelope.

If the modifications directed by this notification were performed on your bus prior to the receipt of this recall notification, complete and sign the recall reply sheet and attached a copy of the work order/invoice. Mail the documents in the **pink** self-addressed postage paid envelope included with the recall notification to Blue Bird for warranty consideration. Reimbursements will be made in accordance with the requirements of the National Highway Transportation Safety Act, Title 49 Code of Federal Regulations, Parts 573 and 577.

Federal law requires that any vehicle lessor receiving this recall notice must forward a copy of this notice to the lessee within ten days.

If Blue Bird Body Company should fail to or is unable to remedy this condition without charge to you, you may contact:

**ADMINISTRATOR
NATIONAL HIGHWAY TRAFFIC SAFETY ADMINISTRATION
1200 NEW JERSEY AVENUE, SE
WASHINGTON, D.C. 20590**

Or, you may call The National Highway Traffic Safety Administration toll free at:

1-888-327-4236
TTY 1-800-424-9153

Or, go to: [HTTP://WWW.SAFERCAR.GOV](http://WWW.SAFERCAR.GOV)

Questions regarding this recall campaign should be directed to me at (478) 822-2242.

Thank you,



Bill Coleman
Corporate Recall Administrator
BLUE BIRD BODY COMPANY



Grid Heater Power Cable May Contact Frame Rail

RECALL

Models Affected: Certain Blue Bird 2008 through 2011 model year All American rear engine model school buses manufactured from 08-09-07 through 06-09-10 and equipped with Cummins ISB07 engines

ISSUE

The grid heater power cable may be improperly routed which could result in contact with the chassis frame rail. If the cable contacts the chassis frame rail it could potentially chafe against the frame thereby creating a short which could result in a fire.

CORRECTIVE ACTION

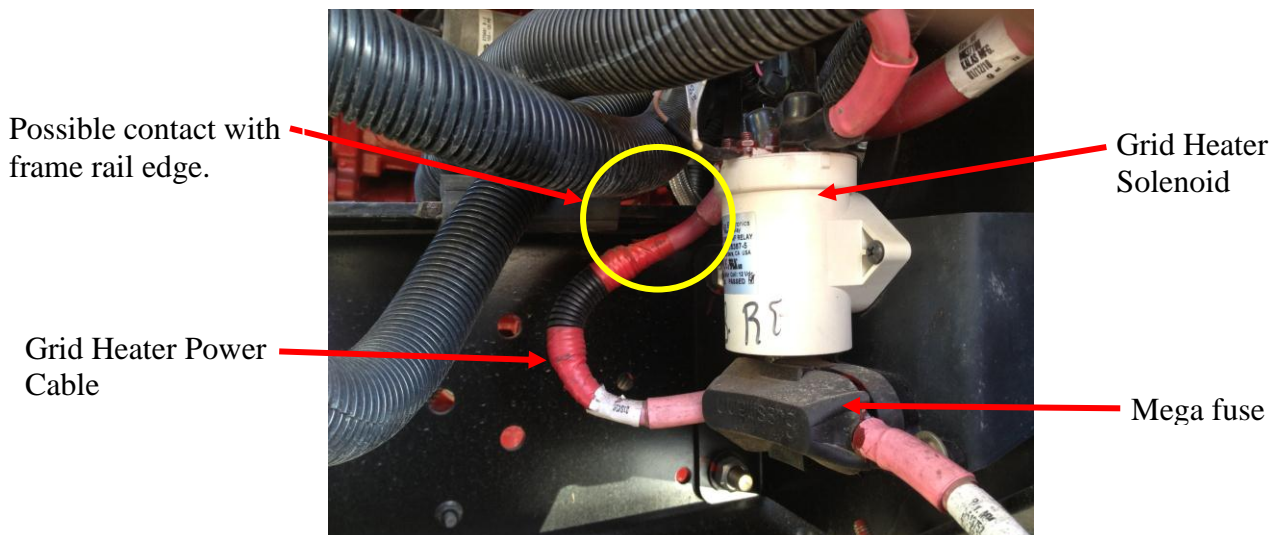
Inspect for proper positioning of the grid heater power cable. If any grid heater power cable is contacting the frame rail, remove and inspect. If there is any damage, replace cable and install per instructions below. If there is no damage, reinstall per instructions below.

PROCEDURE

WARNING: Always follow all Federal, State, Local and Shop safety standards and use proper safety equipment, and thoroughly read and understand all instructions before performing these procedures.

INSPECTION

1. Park vehicle, apply parking brake, turn engine off , chock wheels and remove ignition key
2. Open rear engine door; locate grid heater solenoid mounted on the right side of bus below the Power Distribution Unit.
3. Locate the grid heater power cable from the mega fuse to top of grid heater solenoid. Check to see if the cable is contacting frame rail edge.



R I 3 W D
R E C A L L C A M P A I G N



Grid Heater Power Cable May Contact Frame Rail

RECALL

4. **If the grid heater power cable is contacting the frame rail edge:**
 - a. Disconnect the battery cables by removing the negative cable first and then the positive.
 - b. Remove the grid heater power cable and inspect for any damage to the cable. If no damage, reinstall per Illustration 1 on page 3. If there is any damage, contact Blue Bird Recall Administrator for replacement cable, replace cable and install per Illustration 1 on page 3.
 - c. Reconnect the battery cables, positive first and then negative.
 - d. Place bus back in service.

5. **If the grid heater power cable is not contacting the frame rail edge but is close to the frame rail edge,** the cable must be repositioned to provide maximum clearance to frame rail. Do not bend the cable away from the frame rail, it **MUST** be repositioned:
 - a. Disconnect the battery cables by removing the negative cable first and then the positive.
 - b. Remove the grid heater power cable and reinstall per Illustration 1 on page 3. If there is any damage, replace cable and install per Illustration 1 on page 3.
 - c. Reconnect the battery cables, positive first and then negative.
 - d. Place bus back in service.

6. **If the grid heater power cable is already positioned per Illustration 1 on page 3, no further action required.**

PARTS LIST

PART NUMBER	DESCRIPTION	QUANTITY
00104593	Cable Assy., Positive, Grid Heater Power	As Required

R I 3 W D
R E C A L L C A M P A I G N



Grid Heater Power Cable May Contact Frame Rail

RECALL

GRID HEATER CABLE INSTALLATION

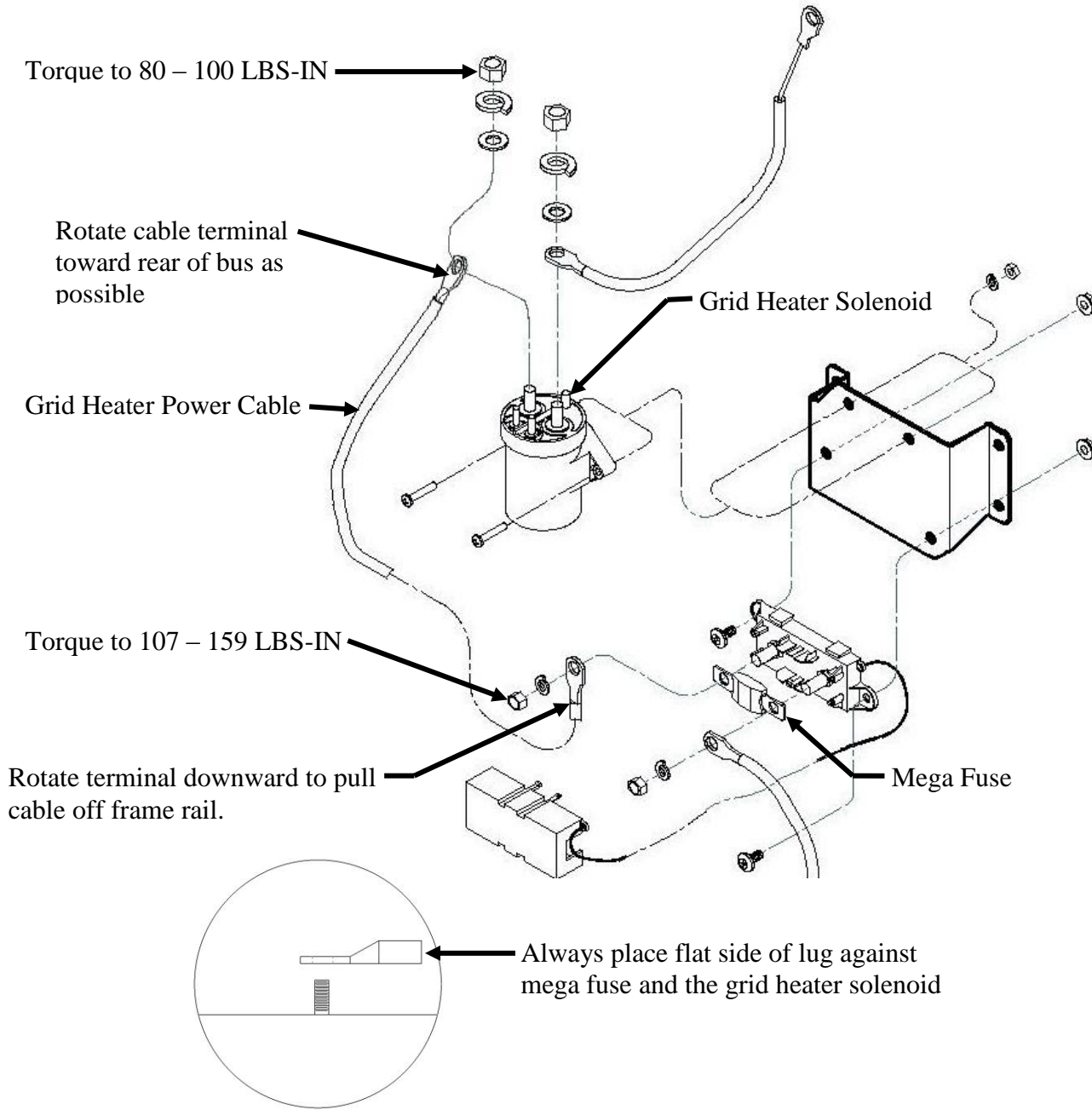


ILLUSTRATION 1

R I 3 W D
R E C A L L C A M P A I G N