



Parking Brake Unintentional Release

RECALL

Models Affected: Certain 2014 & 2015 All American Front Engine and Vision Buses Equipped with Hydraulic Brakes

ISSUE

The parking brake pedal arm linkage may not have been manufactured correctly and if it were to fail, the bus could roll unexpectedly when parked. Blue Bird recommends that these buses not be operated and that wheel chocks be placed on the tires to prevent the bus from rolling unexpectedly until the parking brake pedals are replaced.

CORRECTIVE ACTION

Replace original parking brake pedal assembly with new replacement parking brake pedal assembly. Do not attempt to install, remove, disassemble or assemble a component until you have read and thoroughly understand the recommended procedures.

PROCEDURE

WARNING: Always follow all Federal, State, Local and Shop safety standards and use proper safety equipment when performing these procedures. Thoroughly read and understand all instructions before performing this procedure.

Components with stripped threads or damaged parts should be replaced rather than repaired. Do not attempt repairs requiring machining or welding unless specifically stated or approved by the vehicle and component manufacturer.

Always wear safety glasses.

1. Park bus on a level surface, apply parking brake, switch engine off, remove ignition key.
2. Chock wheels then release parking brake.
3. Park brake cable tension must be released. Locate bellcrank at transmission. (Fig. 1) Using a pipe wrench adjusted to the bellcrank width in area shown in Fig 1, rotate bellcrank counter clockwise to remove cable tension and then remove clevis pin.
4. Disconnect parking brake release handle by removing the cotter pin and flat washer and set aside for use later. (Fig. 2)



Fig. 1



Fig. 2

R I 3 W T

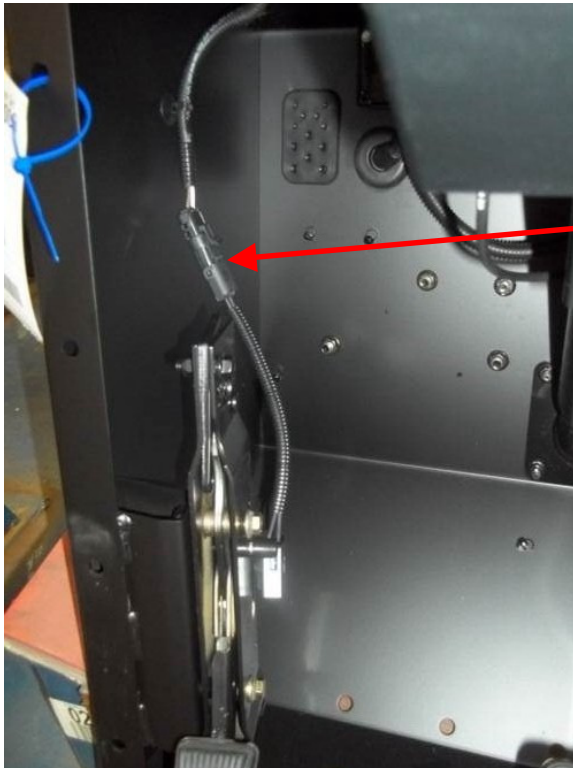
R E C A L L C A M P A I G



Parking Brake Unintentional Release

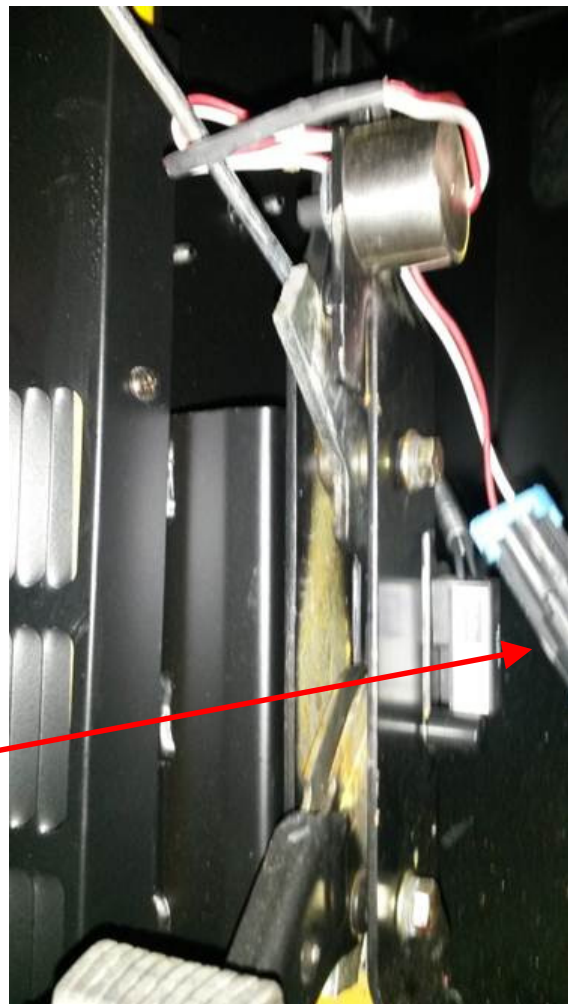
RECALL

5. Disconnect brake switch connector (Fig. 3) and solenoid connector, if present. (Fig.4)



Brake Switch Connector

Fig. 3



Solenoid connector
(Park brake assembly
with optional solenoid
shown)

Fig. 4

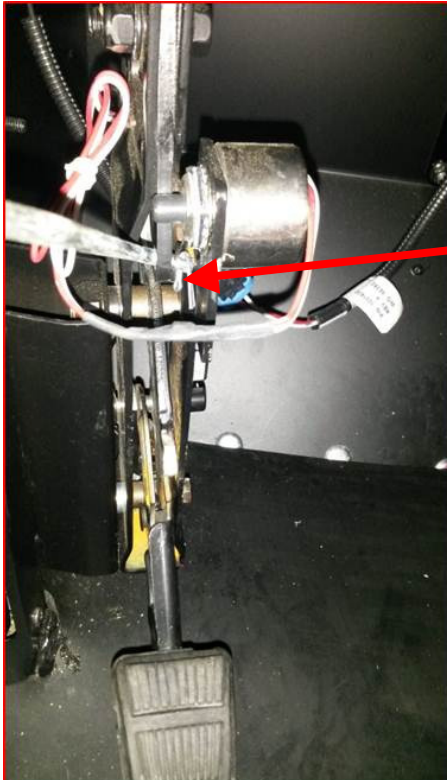
R I 3 W T
R E C A L L C A M P A I G N



Parking Brake Unintentional Release

RECALL

6. Remove cotter pin, then the flat washer from release handle mechanism. (See Fig. 5)
Note: Retain these parts for installation of new park brake lever assembly.



Remove cotter pin and flat washer

Fig. 5

7. Using a 1/2 inch socket and ratchet remove both mounting bolts (Fig. 6). Ensure spacer on lower mounting bolt between park brake assembly and panel and all washers are saved for reinstallation. (Fig. 7)

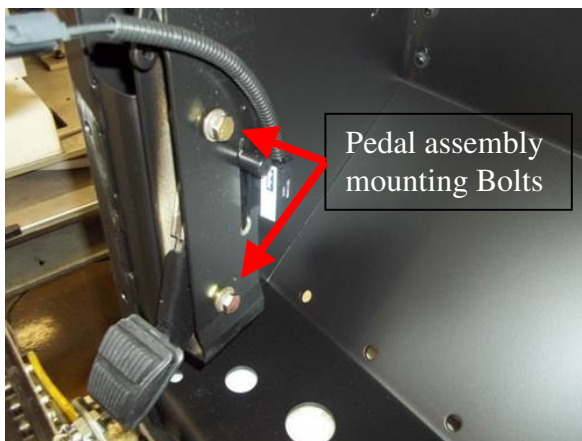


Fig. 6



Fig. 7

R I 3 W T

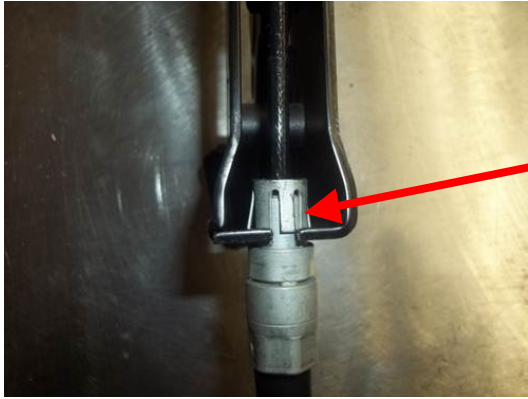
R E C A L L C A M P A I G N



Parking Brake Unintentional Release

RECALL

8. Rotate cable in assembly so one of the clips is in line with opening. (Fig. 8)



Cable clip shown
in line with opening

Fig. 8

9. A modified wrench (Fig. 8) will be provided with each order consisting of a 13mm wrench with a slot cut in the top side of the box end and machining the hex open to approximately .585 Dia. This will give enough clamp pressure to depress the locking tabs.

Modified wrench to aid in removing cable



Fig. 9

10. Using the modified wrench, slide wrench down over cable connector. (Fig. 10)



Wrench shown over
cable connector

Fig. 10

R I 3 W T

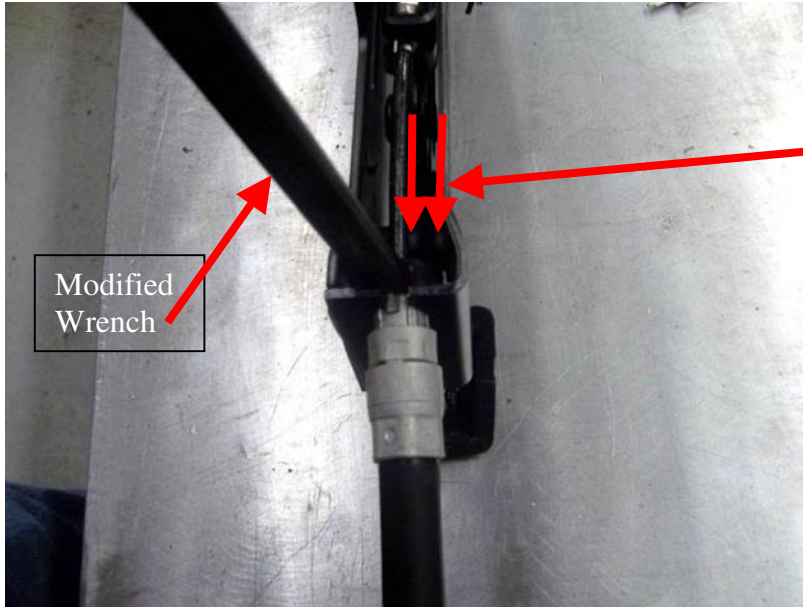
R E C A L L C A M P A I G N



Parking Brake Unintentional Release

RECALL

11. Slide modified wrench over connector (Fig. 11) to disengage the locking tabs.



Slide wrench in direction as shown by arrows

Fig. 11

12. Once wrench is properly located, pull cable straight out to remove from assembly. (Fig. 12)



Pull cable in direction of arrows

Fig. 12

R I 3 W T

R E C A L L C A M P A I G N



Parking Brake Unintentional Release

RECALL

13. Once cable is disengaged from assembly position pedal in a “full up” position. (Fig. 13)



Fig. 13

14. To remove, lift cable end from the retainer and separate from park brake lever assembly. (Fig. 14)



Fig. 14

R I 3 W T

R E C A L L C A M P A I G N



Parking Brake Unintentional Release

RECALL

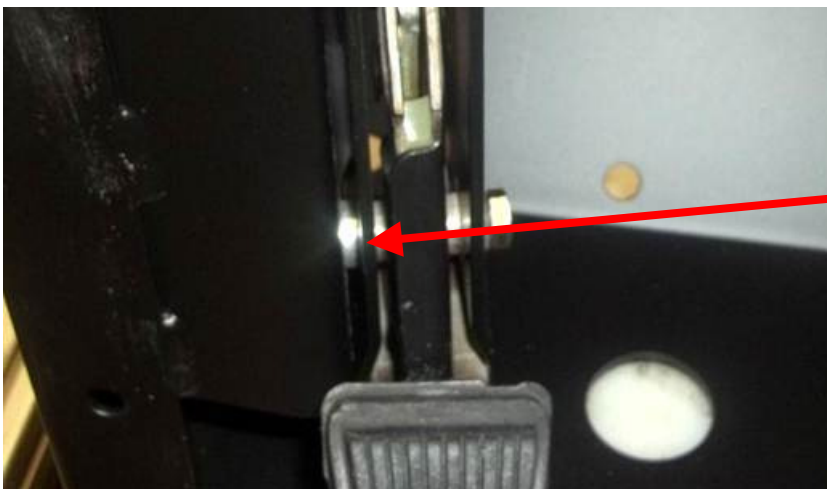
15. Flip the pedal assembly over and position cable connection as shown. (Fig. 15)



Cable position

Fig. 15

16. Installation is in reverse order. Ensure spacer (Fig. 16) retained in Step 6 is placed between box assembly and park brake to prevent damage to assembly when installing lower mounting bolt.



Spacer (retained in Step 7)

Fig 16

R I 3 W T
R E C A L L C A M P A I G N



Parking Brake Unintentional Release

RECALL

- 17. Be sure to reattached brake release lever.
- 18. Be sure to reattached cable at bellcrank on transmission.
- 19. Prior to returning the vehicle to service, make certain all components and systems are restored to their proper operating condition.
- 20. Dispose of removed pedal assembly in accordance with all Federal, state and local regulations.
- 21. Remove chocks from wheels.
- 22. Return bus to service.

PARTS LIST:

Part No	Qty	Description
10020420	1	Pedal Assy, Brake, Park, Reinforced, Without Solenoid
10020421	1	Pedal Assy, Brake, Park, Reinforced, With Solenoid
NPN	1 per order	Wrench, 13mm, modified

R I 3 W T
R E C A L L C A M P A I G N