

Date	Number	Page
01.14	RVXX1307	1(5)

L9 Seat Belt**2013-2014 VN, VAH, VHD****RVXX1307, L9 Seat Belt****(January 2014)**

Volvo Trucks North America has determined that a defect relating to motor vehicle safety may exist in certain 2013 and 2014 model year Volvo VN, VAH and VHD vehicles. This applies specifically to vehicles with IMMI seat belt assemblies equipped with L9 buckles. When the push button on the buckle is pressed to release the latch plate, the latch plate can become partially engaged with the buckle. Under this circumstance, the partially engaged latch plate may not separate from the buckle when force is applied. To address this issue, complete the following inspection and repair procedures as required.

The number of vehicles affected is approximately 6,808 vehicles (5,486 U.S., 1,100 Canada and 222 Export).

Part Ordering Information:

NOTE: No orders through Parts Compass.

If the vehicle is eligible, call 1-877-602-0270 and provide the following:

- 17 digit Vehicle Identification Number (VIN)
- Recall Number (RVXX1307)
- Dealer Code
- Purchase Order Information (PO number)

Parts:

Original Seatbelt Assembly	Recall Buckle Kit (1 Per Buckle Requiring Replacement)
21341675	85142117
21349330	85142118
21349353	85142119
21631590	85142120
21349354	85142121
21349319	85142122
22049616	85142123
21449257	85142124
21341677	85142125
21349331	85142126
21542727	85142127
21882663	85142128
22067620	85142129
21349355	85142130
21924080	85142131
21349336	85142132
21349344	85142133
21542730	85142134
21924077	85142135
21740854	85142136
21349325	85142137
22196699	85142138
21695515	85142139

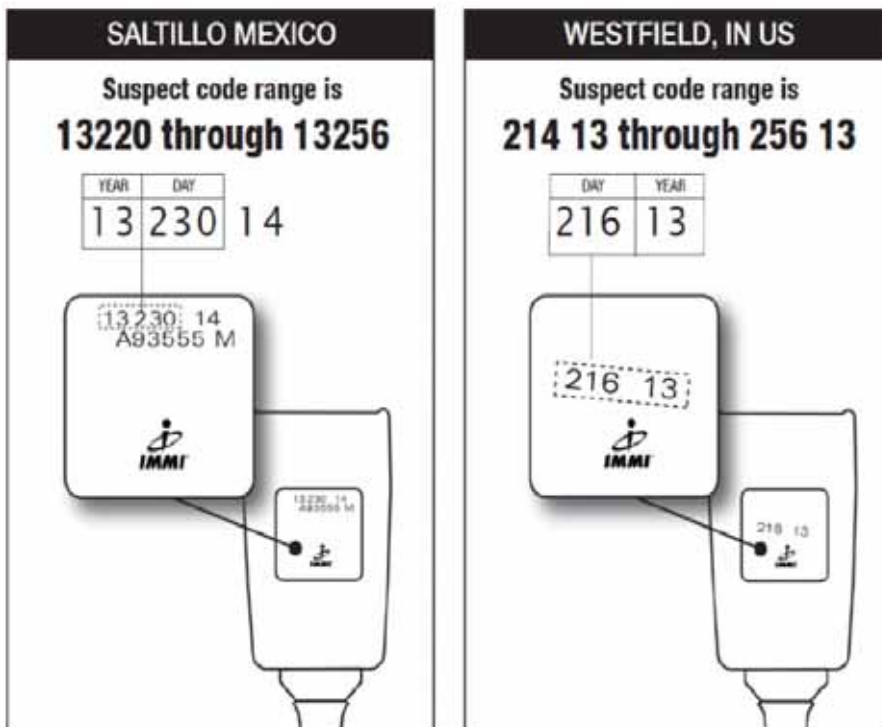
Repair Procedures:

Inspection:

1. Inspect the buckle for the following:
 - A. Verify the buckle is an IMMI buckle by looking for the IMMI logo on the back housing.
 - B. Verify that the IMMI buckle is an L9 buckle.



- C. Find the buckle assembly date code on the back housing of the buckle.
 - D. There are two different date code formats as illustrated.



- E. If the buckle is within the date ranges noted in the previous step, replace the buckle. Utilize the repair below.
 - F. If the buckle is not within the date ranges noted in the previous step, do not replace the buckle.

Repair

1. Secure the vehicle for service by parking it on a flat level surface, applying the parking brake, chocking the rear wheel, and placing the transmission in neutral.
2. Disconnect cables from the negative (ground) battery terminals to prevent personal injury from electrical shock and prevent damage to electrical components. Next, disconnect the positive cables from the batteries.
3. At the tether, remove the seat belt buckle mount bolt.
4. Install the replacement buckle using new hardware provided in the kit. Torque the fastener to 68 +/- 7 Nm (50 +/- 5 ft-lb).
NOTE: Destroy and dispose of all the replaced buckles.
5. Reconnect all previously removed cables to the negative (ground) and positive terminals.

Reimbursement

This repair is covered by an authorized Safety Recall campaign. Reimbursement is obtained through the normal claim handling process.	
Claim Type (used only when uploading from the Dealer Bus. Says.)	R
Recall Status	
Vehicle inspected, no repair required	1- Inspected, no repair required
Vehicle inspected and repaired per instructions	2-Inspected and Modified per instructions
Labor Code	
Primary Labor Code (One or Two Buckles)	Inspection Only: 88421-0-01 - 0.3 hr. Inspect and Repair: 88421-0-02 - 0.4 hr.
Time to take charge of vehicle and determine campaign status	17003-0-01 - 0.3 hr.
Causal Part	21341675
Authorization No.	RVXX1307

Take-charge time is not included in the labor code for this operation. Take charge may be eligible, but can only be used once per vehicle repair visit. If the vehicle is having other warranty repairs performed, take-charge should be charged to the warranty repair, otherwise take-charge can be charged to this Safety Recall.