

13V-442

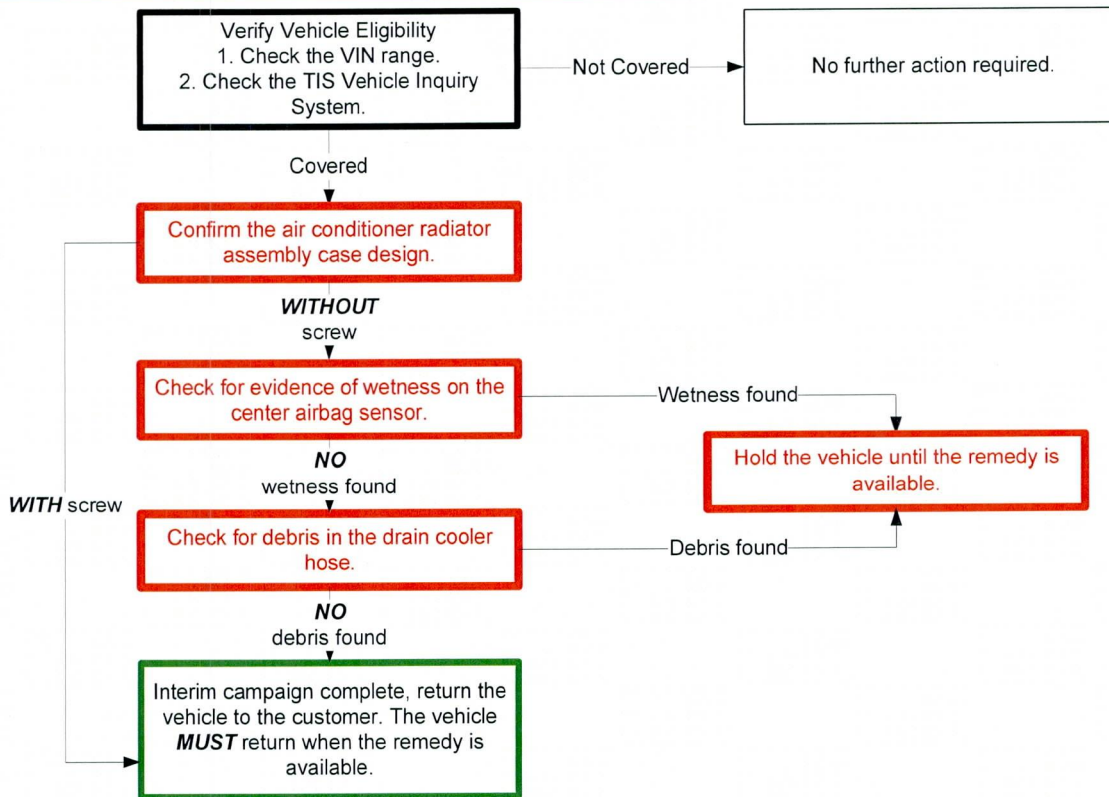
DEALER NOTICE
DATED 10/28/2013

**INTERIM INSPECTION INSTRUCTIONS
FOR
SAFETY RECALL D1T
HVAC ASSEMBLY
CERTAIN 2012 – 2013 MODEL YEAR VENZA**

**ONLY TECHNICIANS WHO HAVE COMPLETED TRAINING COURSE SC13A AND ARE TOYOTA
ELECTRICAL EXPERTS CAN PERFORM THIS REPAIR**

I. OPERATION FLOW CHART

The flow chart is for reference only. **DO NOT** use it in place of the full technical instructions. Follow **ALL** steps as outlined in the full technical instructions to confirm the campaign is completed correctly.



II. BACKGROUND

Condensed water can accumulate at the bottom of the HVAC unit housing in the subject vehicles if the HVAC drain hose becomes clogged. Due to the location of the housing seam, which is directly above the airbag control module, the accumulated water could leak through the seam onto the module. If the circuit board inside the module becomes wet, a short circuit could occur between adjacent terminals of specific circuits, resulting in illumination of the airbag warning light. In some instances, the air bag(s) could become disabled or could inadvertently deploy. An airbag that deploys inadvertently can, under some circumstances, increase the risk of minor injury or the possibility of a crash. An inoperative airbag can increase the risk of injury in a severe crash.

In limited instances, the power steering assist function could become inoperable because the CAN communication line in the airbag control module is damaged. Loss of power steering assist results in increased steering effort and can increase the risk of a crash at low speeds.

III. PREPARATION

A. PARTS – **NO PARTS WILL BE USED FOR THIS INTERIM INSPECTION**

B. TOOLS & EQUIPMENT

- Standard hand tools
- Flashlight
- Nylon loop handle brush

IV. IDENTIFICATION OF AFFECTED VEHICLES

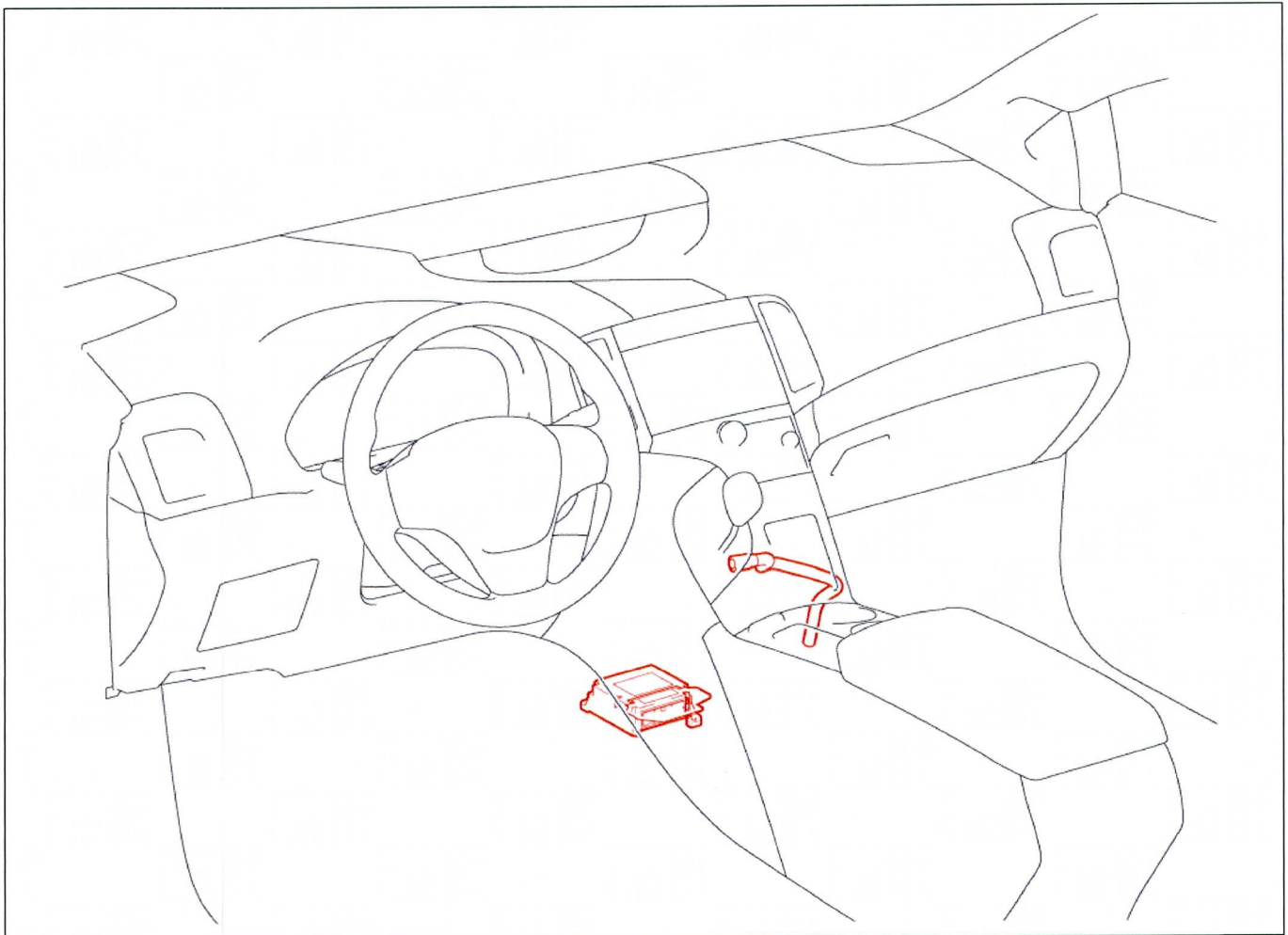
A. COVERED VIN RANGE

MODEL	WMI	MY	VDS	START	FINISH
VENZA	4T3	2012	BA3BB	U033430	U034083
			BK3BB	U073156	U074095
			ZA3BB	U062055	U063065
			ZK3BB	U051235	U052276
		2013	BA3BB	U033792	U045929
			BK3BB	U073734	U092685
			ZA3BB	U062683	U078380
			ZK3BB	U052048	U061646

NOTE:

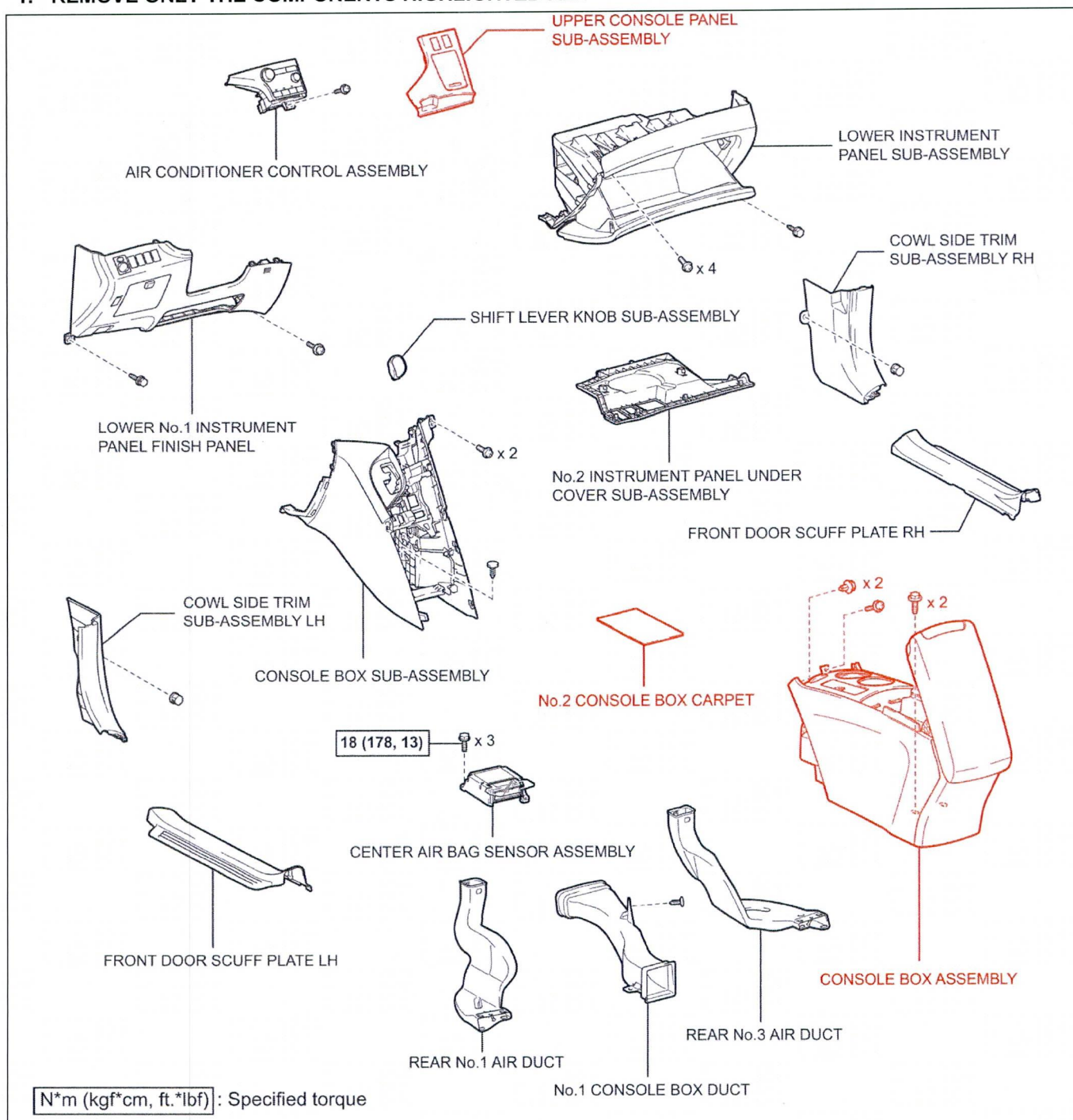
- Check the TIS Vehicle Inquiry System to confirm the VIN is involved in this Safety Recall, and that the campaign has not already been completed prior to dealer shipment or by another dealer.
- TMS warranty will not reimburse dealers for repairs conducted on vehicles that are not affected or were completed by another dealer.

V. COMPONENTS



VI. AIR CONDITIONER RADIATOR ASSEMBLY INSPECTION

1. REMOVE ONLY THE COMPONENTS HIGHLIGHTED RED



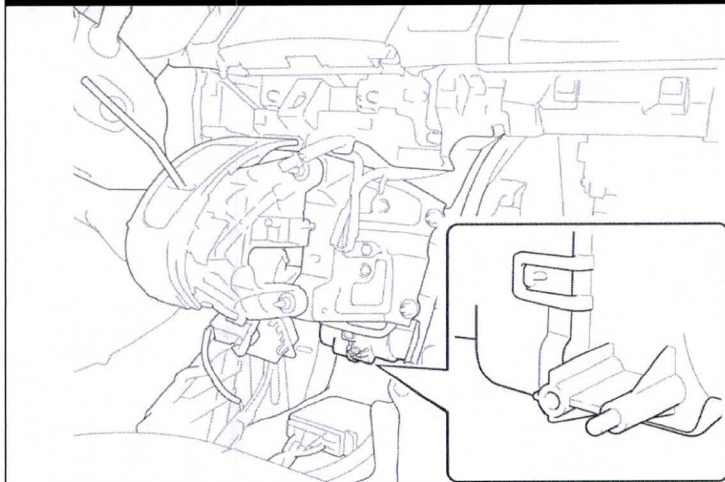
2. INSPECT THE DESIGN OF THE AIR CONDITIONER RADIATOR ASSEMBLY

- a) Inspect **VISUALLY AND BY HAND** to determine the case design.



The old design case may develop a leak at the case seam if there is a buildup of condensed water. This inspection step is **CRITICAL** to determine which case design is installed in the vehicle.

WITHOUT SCREW DESIGN



This is the **OLD** case design. Additional inspection is required. Proceed to **STEP 3**.

WITH SCREW DESIGN



This is the **NEW** case design. No further action required. Campaign Complete.

WITHOUT SEAM DESIGN – 2012MY ONLY



This case design will only be found on **SOME** 2012 model year Venza vehicles. This case design **IS NOT** affected. No further action required. Campaign Complete.

3. CHECK AND RECORD DTCs

- Check and record any DTCs.

4. DISCONNECT THE NEGATIVE BATTERY TERMINAL



- Wait at least 90 seconds after disconnecting the cable from the negative battery terminal to prevent airbag and seat belt pretensioner deployment.
- Follow all precautions as outlined on TIS before servicing the SRS system.

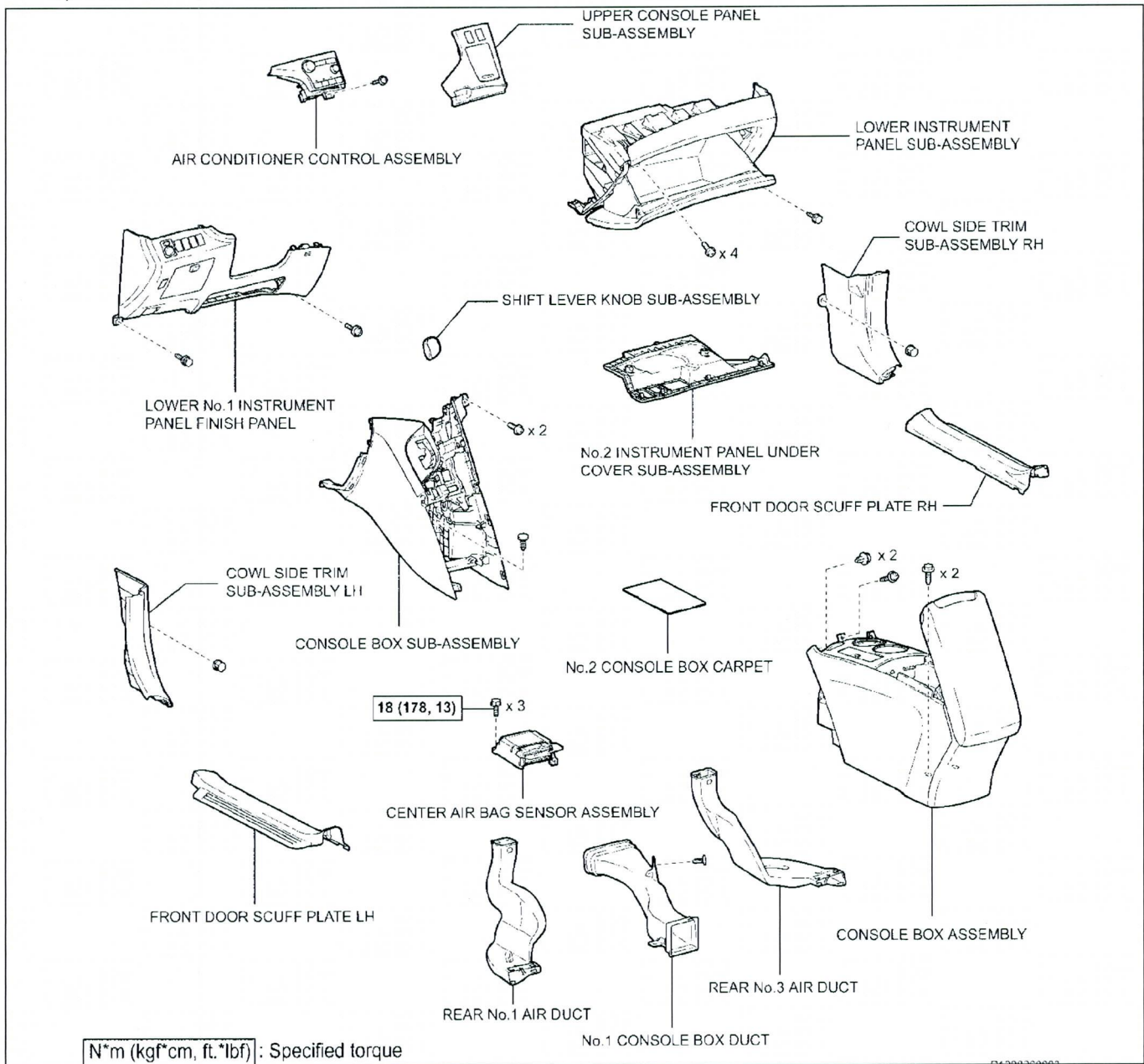
VEHICLE REPORTING/TAS CASE CREATION

Report/Create a TAS Case for any vehicle that has evidence of:

- Water on SRS ECU (Do Not clean hose, keep in original condition)
- Clogged Drain Hose (save clogging material)

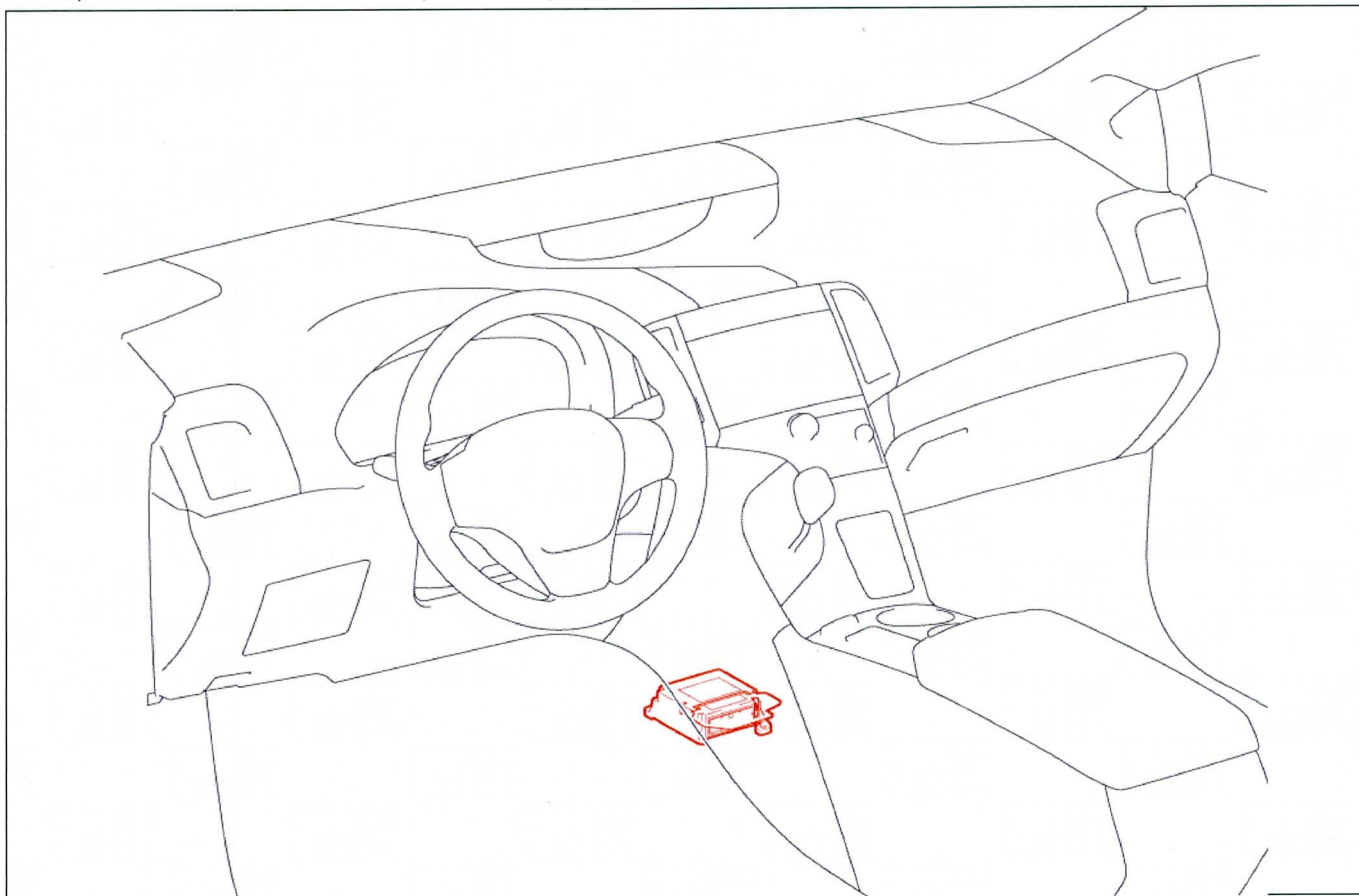
5. REMOVE ALL OF THE REMAINING COMPONENTS

- Refer to TIS for detailed instructions.



6. CHECK FOR EVIDENCE OF WETNESS ON THE CENTER AIRBAG SENSOR ASSEMBLY

- a) **USE A FLASHLIGHT** to inspect visually for any water stains **ON** the center airbag sensor assembly.



NO WETNESS FOUND



NO WETNESS FOUND

Additional inspection is required. Proceed to **STEP 7**.

WETNESS FOUND

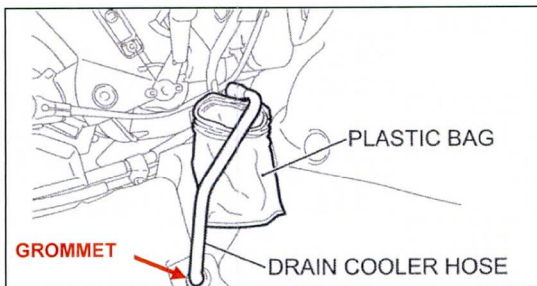


WETNESS FOUND

Wetness indicates that there may be additional component damage. Hold the vehicle until the remedy repair is available.



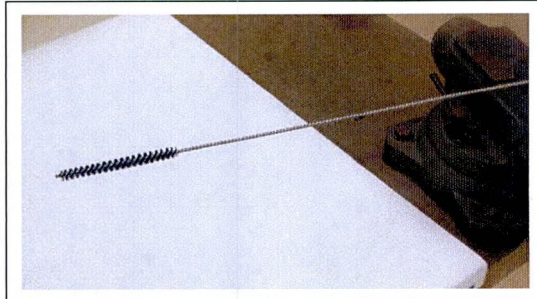
If wetness is found stop and report immediately.



7. REMOVE THE DRAIN COOLER HOSE

- Place a bag or shop cloth under the hose to catch any water that may be remaining in the hose.

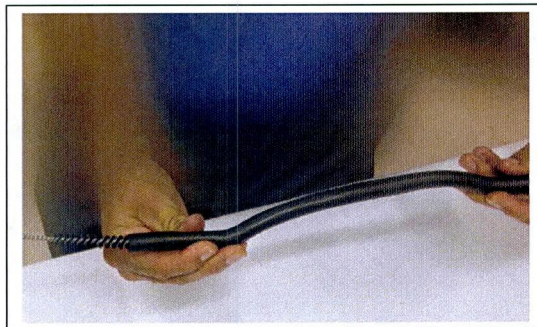
NOTE: Use caution to avoid displacing the floor pan grommet during hose removal and installation.



8. MOUNT THE WIRE BRUSH IN A VISE

- Mount the brush so that the bristles are above the bench, this will allow for any debris that is forced out of the hose to land on the bench for inspection.
- Place a clean sheet of paper on the bench directly below the brush.
- Verify the brush is clean and free of debris.

NOTE: If paper is not available, confirm the bench is clean to allow for an accurate debris inspection.

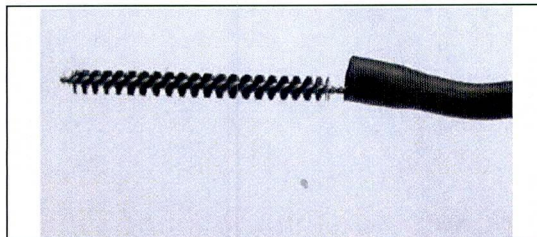


9. BRUSH THE HOSE

- Stretch the hose to straighten it and carefully work the hose onto the brush using a twisting motion, push the brush **COMPLETELY** through the hose.



The tip of the brush may catch on the tube, to help prevent damage keep the tube as straight as possible.

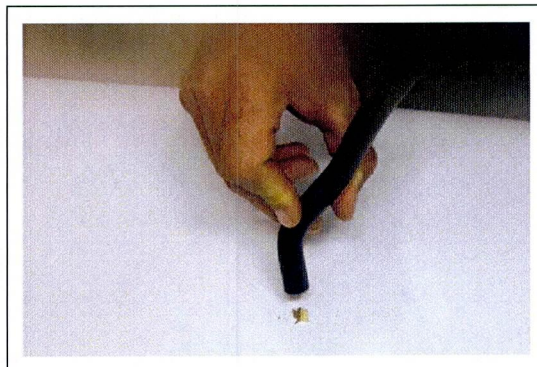


- Check the brush for any debris, **REMOVE DEBRIS FROM THE BRUSH IF FOUND.**

- Slowly pull the hose off of the brush.

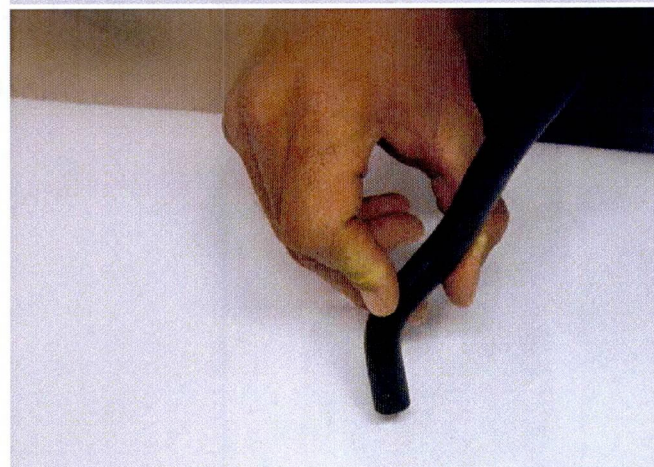
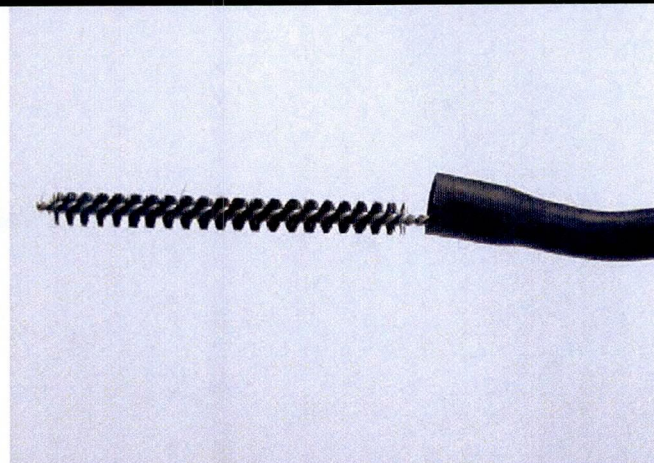


After pushing the brush completely through the hose it is critical to remove any debris from the brush so that the debris does not get lodged in the hose.

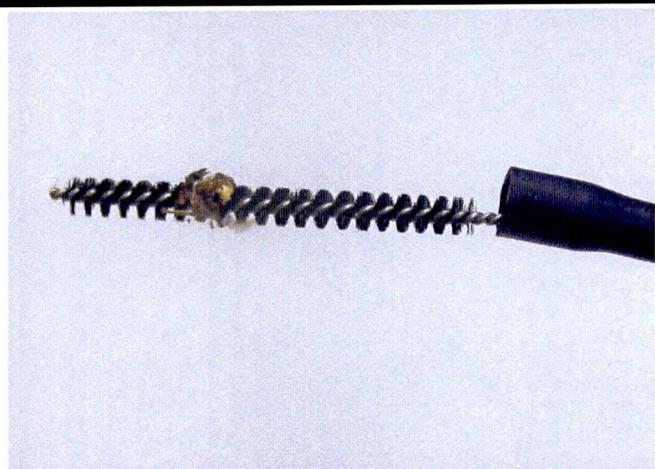


- Tap the hose on the bench to remove any debris that may remain in the hose.

- Check for debris on the brush **AND** on the bench.

NO DEBRIS FOUND

Confirm the hose is clean by blowing compressed air through the hose. Reassemble the vehicle. Interim campaign complete. The vehicle **MUST** return when the remedy repair is available.

DEBRIS FOUND

Debris indicates that there may have been a blockage at some point in time that could have led to additional component damage. Hold the vehicle until the remedy repair is available.

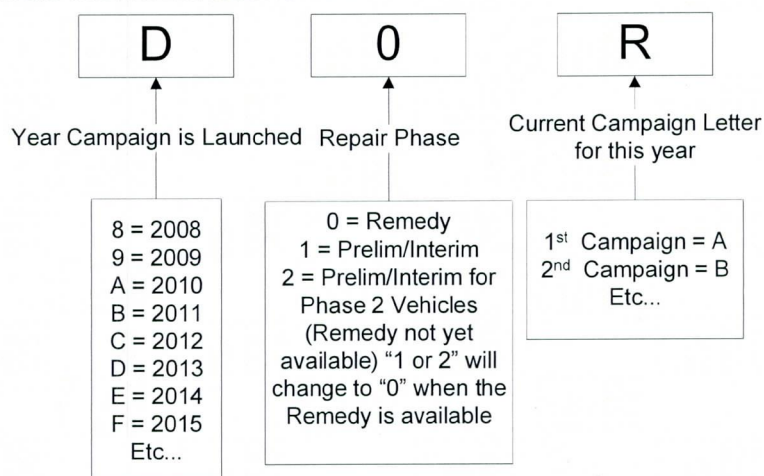
◀ VERIFY REPAIR QUALITY ▶

- Use caution to prevent damage to the interior panels
- Confirm the drain hose has no debris and that there is no wetness before releasing vehicle

If you have any questions regarding this recall, please contact your regional representative.

VII. APPENDIX

A. CAMPAIGN DESIGNATION DECODER



B. CAMPAIGN PARTS DISPOSAL

Please make sure all campaign parts (original parts) removed from the vehicle are disposed of in a manner in which they will not be reused, ***unless requested for parts recovery return.***