

**HYUNDAI**NEW THINKING.  
NEW POSSIBILITIES.**Technical Service Bulletin**

GROUP

**CAMPAIGN**

NUMBER

**13-01-037**

DATE

**SEPTEMBER 2013**

MODEL(S)

**SANTA FE (AN)**SUBJECT: SANTA FE SPORT (AN) 2.4L 2WD FRONT RIGHT AXLE  
REPLACEMENT (RECALL 112)**\* IMPORTANT****\*\*\* DEALER STOCK AND RETAIL VEHICLES \*\*\***

As required by federal law, dealers must not deliver new vehicles for sale or for lease to customers until all open recalls have been performed. Dealers must also perform all open recalls on used vehicles, demo and rental vehicles prior to placing them into customer use and whenever an affected vehicle is in the shop for any maintenance or repair.

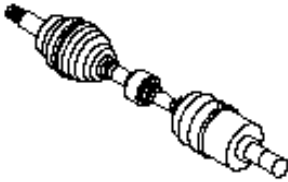
When a vehicle arrives at the service department, access Hyundai Motor America's "Warranty Vehicle Information" screen via WEBDCS to identify open Campaigns.

**Description:** This bulletin describes the procedure to replace the front right (passenger side) axle shaft assembly on some AN Santa Fe Sport 2.4L 2WD vehicles.

**Applicable Vehicles:**

- 2013 AN Santa Fe Sport, 2.4L 2WD – Produced from July 13, 2012 through March 12, 2013.

**Parts Information:**

| PART IMAGE  | PART NUMBER    | DESCRIPTION                                |
|---|----------------|--|
|  | 49501-2W600QQH | Front right (passenger side) axle assembly |

Circulate To: General Manager, Service Manager, Parts Manager, Warranty Manager, Service Advisors, Technicians, Body Shop Manager, Fleet Repair

**Warranty Information:**

| Model                          | Op Code  | Operation                    | Op Time |
|--------------------------------|----------|------------------------------|---------|
| AN Santa Fe Sport,<br>2.4L 2WD | 31CG07R0 | Front right axle replacement | 0.8     |

**NOTE: Submit Claim on Campaign Claim Entry Screen****Service Procedure:**

1. Lift the vehicle on a hoist, ensure the vehicle ignition is OFF and the transmission set to Park (P).

Remove the front right (passenger side) wheel/tire assembly using a 21mm deep socket.

**\* NOTE**

Tightening torque: 65.1~79.5 lb-ft  
(88.3~107.9 Nm, 9.0~11.0 kgf.m)



2. Remove the brake line retaining bracket from the strut body using 12mm wrench. Set the bolt aside.

**\* NOTE**

Tightening torque: 5.1~7.9 lb-ft  
(6.8~10.8 Nm, 0.7~1.1 kgf.m)



3. Remove the ABS / wheel speed sensor using a 10mm socket, and wrench.

**\* NOTE**

Tightening torque: 5.1~7.9 lb-ft  
(6.8~10.8 Nm, 0.7~1.1 kgf.m)



4. Remove the top and bottom caliper slide pin bolts using a 14mm wrench, and set aside.

**\* NOTE**

Tightening torque: 15.9~23.1 lb-ft  
(21.6~31.4 Nm, 2.2~3.2 kgf.m)



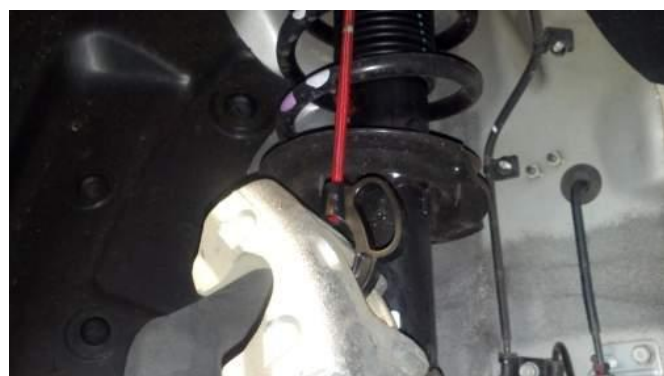
5. Lift caliper upwards and off the brake pads.



6. Move the caliper out of the way.

**\* CAUTION**

DO NOT let the caliper hang from the brake line. Doing so could cause damage, and or failure to the brake line.



7. Remove the brake pads from the caliper bracket and set aside.



8. Remove the axle retaining nut from the axle using a 32mm impact socket and wrench. Discard used axle nut.

**\* NOTE**

Tightening torque: 177.2~198.9 lb-ft  
(240.3~269.7 Nm, 24.5~27.5 kgf.m)



9. Using a 17mm socket, and 19mm wrench, remove the 2 lower strut bolts, with nuts, and set aside.

**\* NOTE**

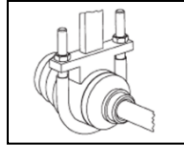
Tightening torque: 101.3~115.7 lb-ft  
(137.3~156.9 Nm, 14.0~16.0 kgf.m)





10. Rotate the hub assembly away from the strut and remove axle from the hub. In some cases the axle can be removed with a tug at this point.

If the axle does not come out by hand, use SST 09495-22000-A, C.V. Joint Remover to remove the axle assembly.



11. Install new axle.

**★ IMPORTANT**

Be sure the axle is fully seated into the transmission and that the retaining clip is securely snapped in.



12. With the axle properly installed in the transmission, re-assemble the vehicle by performing the steps in this procedure in reverse order.

**★ NOTE**

The front axle nut must be replaced with the new one supplied with the axle. Be sure to stake the nut after tightening down to the proper torque spec using a chisel/punch and hammer.

