



Water Tank Mounting System Recall Repair Procedures

Recall Numbers 13V284000 US and 2013-225 CA
Monaco File 13001MRV

Products Affected

Discover Canada RV 2012 Cobalt Trail Expedition, 2011 Cobalt Trail TC, 2011 Cobalt Trail TL, 2012 Cobalt Trail TS UltraLite, and 2012 Cobalt Trail XLT UltraLite; **Holiday Rambler** 2012-2014 Aluma-Lite, 2012-2014 Aluma-Lite Ultra, and 2011 Campmaster; **McKenzie** 2013-2014 Rainier Ascent; **R-Vision** 2011-2012 Onyx, 2011 Trail Cruiser, 2013-2014 Trail Lite Trek, 2011-2013 Trail Lite, 2012-2014 Trail Sport, and 2012-2014 Trail-Lite Crossover. The affected travel trailers were manufactured from October 12, 2009 through May 15, 2013 with water tanks mounted under the floor within enclosed underbellies.

Purpose of Recall

To add a cross brace between the fresh water tank mounting brackets.

Read these instructions carefully and become thoroughly familiar with the procedures before beginning repairs. It is important to follow all installation instructions. If a component of the tank mounting system has failed, please call technical support at (877) 466-6226 for further instruction.

Repair Process

- Locate the end of the fresh water tank that is farthest away from the end with the tank fill. The location varies by model, year, and floorplan.
 - Find the tank fill on the exterior sidewall of the trailer. See figure 1.
 - Go to the underside, on the opposite side of the unit directly across from the tank fill. There will be mounting bracket securement screws for the water holding tank in the area, secured through the chassis frame rail. See figure 2.
 - Remove 1 or 2 screws which are securing the underbelly material to the chassis frame in the same general area.
 - Gently pull the underbelly material down to get a visual of the fresh water tank and mark the location of the end of the tank and mounting brackets on the underbelly for the next step. *Note: there is silicone between the frame rail and the underbelly.*
- Access the area at the end of the fresh water tank to install the cross brace bracket.
 - Cut a 6" wide strip out of the corrugated underbelly material at the end of the tank between the mounting brackets. Leave both ends attached and cut the center. See figure 3. *Note: make sure the utility knife does not come in contact with the tank or any other component.*



Fig. 1— Fresh water tank fill.

Fig. 2— Mounting bracket screws.



Fig. 3 — Access in the underbelly to install cross brace bracket.

Repair Process continued

- Locate the tank probe at the end of the tank and install the 4” x 6” piece of corrugated underbelly material from the parts kit over the exposed probe with clear silicone. See figure 4.
- Install the cross brace bracket provided in the parts kit to the existing mounting brackets using two (2) self drilling screws to secure each end. The cross brace should be situated against the end of the tank. See figure 5.
- Reseal the underbelly.
 - Replace the strip of corrugated underbelly material.
 - Clean the surface on and around the area to ensure good adhesion.
 - Install the underbelly seal tape and smooth flat to eliminate bubbles or wrinkles. See figure 6.
 - Seal around the underbelly tape with black silicone.
- Reattach the underbelly to the frame.
 - Run a bead of silicone along the area of the underbelly material that will contact the frame.
 - Re-secure the underbelly material to the frame using the screws and washers that were removed earlier.

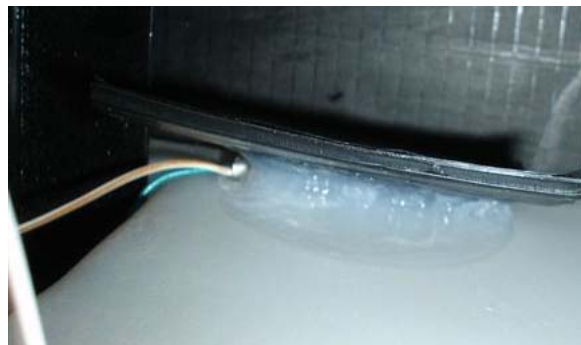


Fig. 4 — Install the 4” x 6” piece of corrugated underbelly material over the exposed probe.



Fig. 5—Install cross brace bracket.

Parts Required

- Parts Kit p/n 08415093:
1 – Bracket (Cross Brace)
4 – Self Drilling Screws
1 – 40” piece of Underbelly Seal Tape
1 – 4”X6” piece of Corrugated Underbelly Material

Not provided:
Silicone—clear & black
Cleaner

Tools Required

- Screw gun - 3/8 hex socket
Marker
Tape Measure
Utility knife
Cleaning cloth



Fig. 6—Reseal the underbelly.

Warranty Claim Information

Warranty claims must be submitted on MDEX. *Note: recalls must be submitted on a separate claim from any other work performed.*

Labor Operation Codes: 22E026CBRC for US Recall 13V284000; 22E126CBRCRC for CA Recall 2013-225

Labor Time Allowance: .50 hrs.

Further Information

For information regarding recall instructions, please call the Recall Hotline at (800) 685-6545.

For questions regarding MDEX or claims, please call (877) 332-9239 and follow the prompts that support the product with which you are dealing.



MONACO RV

Parts Purchase Order

**Recall 13V284000 (US) / 2013–225 (CA)
Monaco Campaign 13001MRV
Water Tank Bracket Installation**

Date: _____

Dealer Number: _____

Contact: _____

PO Number: _____

Bill to Account: _____

Ship to: _____

Phone Number: _____

Fax Number: _____

Kit Part Number 08415093

Contains:

1 – Bracket (Cross Brace)

4 – Self Drilling Screws

1 – 40” piece of Underbelly Seal Tape

1 – 4”X6” piece of Corrugated Underbelly Material

Customer Name: _____

VIN & Production Numbers: _____

All parts will be shipped UPS Ground unless other arrangements are made in advance.
Submit Parts Orders to:
Fax: (541) 995-1182 -or- E-mail: angela.brooks@monacorv.com