



RECALL CAMPAIGN BULLETIN

Reference:

NTB13-024

Date:

March 21, 2013

VOLUNTARY SAFETY RECALL 2013 NISSAN SENTRA FUEL TANK

CAMPAIGN ID #: PM353
APPLIED VEHICLE: 2013 Nissan Sentra (B17)
NHTSA #: 13V-068

Check Service COMM to confirm campaign eligibility.

INTRODUCTION

Nissan is conducting a Voluntary Safety Recall Campaign on certain specific 2013 Nissan Sentra vehicles to inspect the fuel tank and if necessary, replace the fuel tank. There is no charge to the customer for parts or labor.

IDENTIFICATION NUMBER

Nissan has assigned identification number PM353 to this campaign. This number must appear on all communications and documentation of any nature dealing with this campaign.

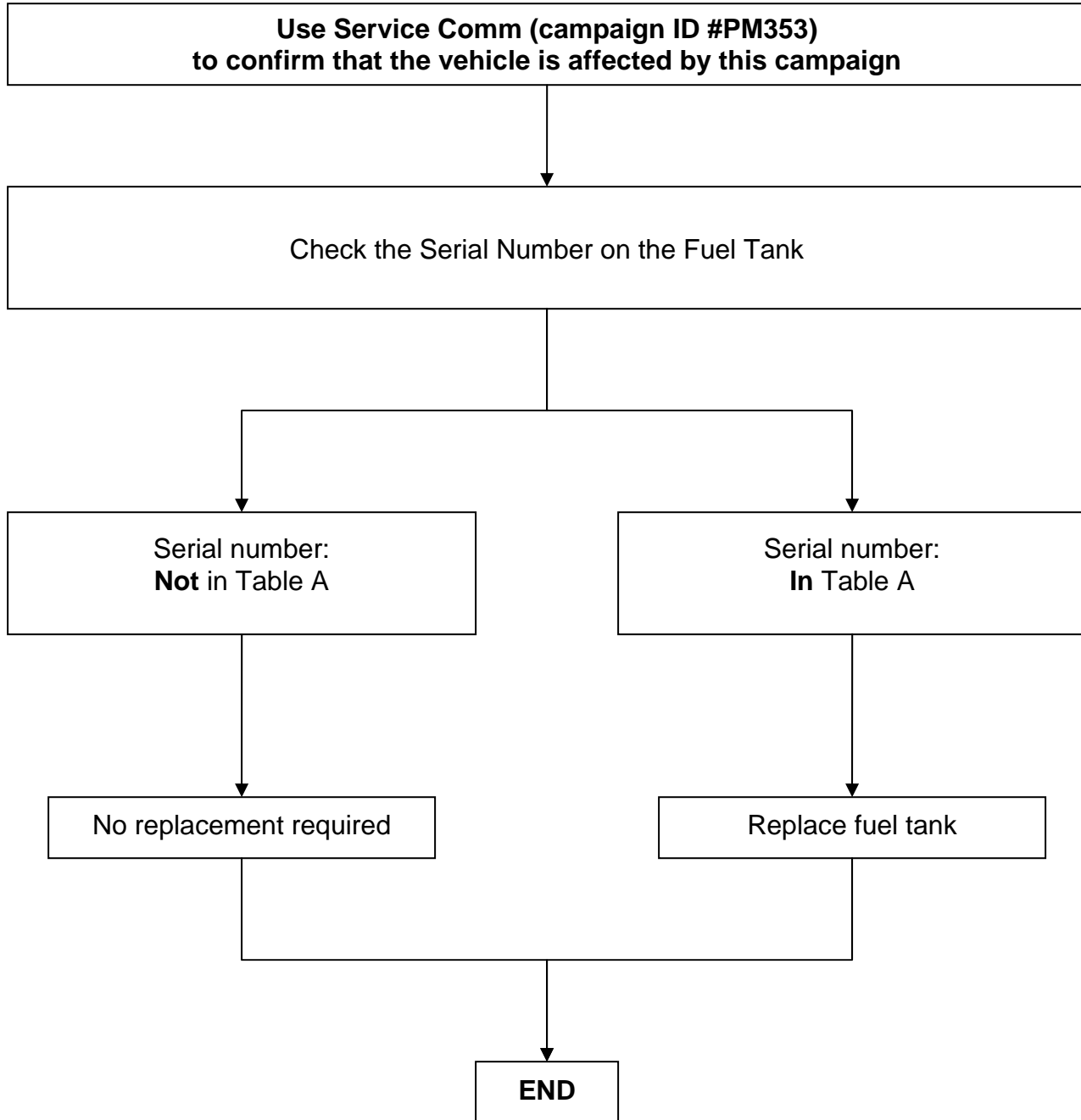
DEALER RESPONSIBILITY

It is the dealer's responsibility to check Service Comm for the campaign status on each vehicle falling within the range of this voluntary safety recall which for any reason enters the service department. This includes vehicles purchased from private parties or presented by transient (tourist) owners and vehicles in a dealer's inventory. **Federal law requires that new vehicles in dealer inventory which are the subject of a safety recall must be corrected prior to sale. Failure to do so can result in civil penalties by the National Highway Traffic Safety Administration.** While federal law applies only to new vehicles, Nissan strongly encourages dealers to correct any used vehicles in their inventory before they are retailed.

NUMBER OF VEHICLES POTENTIALLY AFFECTED

The total number of vehicles expected to be inspected is approximately 400. Only 24 tanks are expected to require replacement.

REPAIR OVERVIEW



INSPECTION OF FUEL TANK SERIAL CODE

1. Place vehicle on a lift and inspect the right side of the fuel tank next to the right rear I-beam pivot.
 - a. Confirm if the fuel tank serial number is listed below in Table A.
 - If fuel tank **is** in the serial number Table A, proceed to step 2 and **replace** the fuel tank with the part number listed in the PARTS INFORMATION table.
 - If the fuel tank **is not** in the serial code Table A, **do not** replace the fuel tank. The inspection is complete; claim inspection with Op Code PM3530.

Figure 2 shows close up of serial label on the side of the fuel tank.

Table A

TPUX125326 0440
TPUX125326 0441
TPUX125326 0442
TPUX125326 0443
TPUX125326 0445
TPUX125326 0446
TPUX125326 0448
TPUX125326 0449
TPUX125326 0451
TPUX125326 0452
TPUX125326 0454
TPUX125326 0455
TPUX125326 0457
TPUX125326 0459
TPUX125326 0460
TPUX125326 0461
TPUX125326 0462
TPUX125326 0463
TPUX125326 0464
TPUX125326 0465
TPUX125326 0467
TPUX125326 0470
TPUX125326 0477
TPUX125326 0480

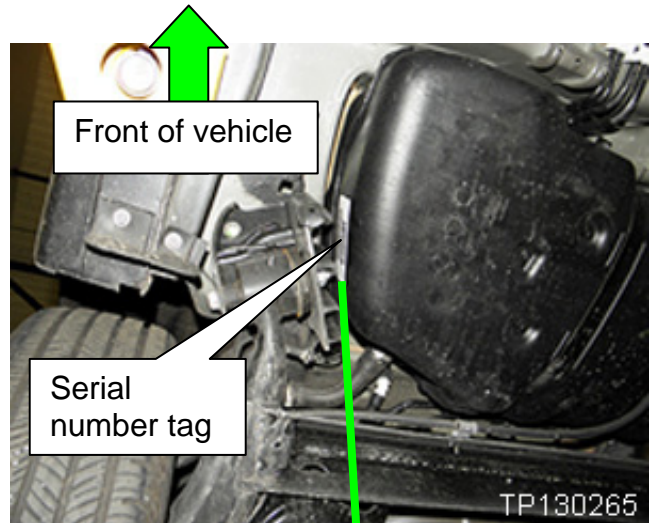


Figure 1



Figure 2

SERVICE PROCEDURE

WARNING: Be sure to read "General Precautions" In the Electronic Service Manual (ESM) when working on the fuel system. Refer to ESM page FL-2, "General Precaution".

NOTE: When removing components such as hoses, tubes/lines, etc., cap or plug openings to prevent fluid from spilling.

Removal of Fuel Tank

2. Set vehicle on a lift.
 3. Open fuel filler lid.
 4. Open filler cap to release the vapor pressure inside fuel tank.
 5. Release the fuel pressure from the fuel lines.
 - Refer to ESM EC-142, "Work Procedure".
 6. Check the fuel level with the vehicle on a level surface. If the fuel gauge indicates more than 1/2 full, drain the fuel from the fuel tank until the fuel gauge indicates a level at or below 1/2 full.
 7. Remove rear seat cushion assembly.
 8. Remove inspection hole cover.
 9. Disconnect harness connector, fuel feed hose, and quick connector from fuel level sensor unit, fuel filter and fuel pump assembly (Figure 4).
 10. Remove quick connector in the following procedures.
 - a. Pinch quick connector square-part with your fingers, and pull out the quick connector by hand.
 - b. If quick connector and tube on sender unit are stuck, push and pull several times until they move, and pull out.
- CAUTION:**
- Quick connector can be removed when the tabs are completely depressed. Do not twist it more than necessary.
 - Do not use any tools to disconnect quick connector.
11. Raise the vehicle.



Figure 3



Figure 4

12. Remove the tunnel stay (cross brace) and then the sub muffler.
13. Remove the center and rear heat shields.

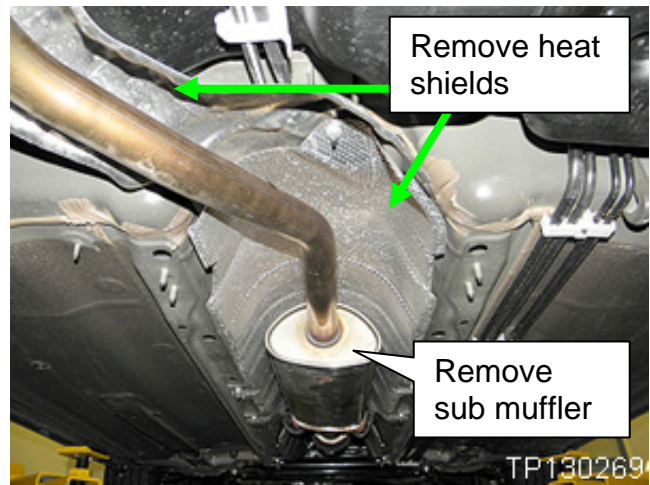


Figure 5

14. Disconnect the rear parking brake cables from the rear axle (10mm bolts) and from locator brackets and then position the cables aside.

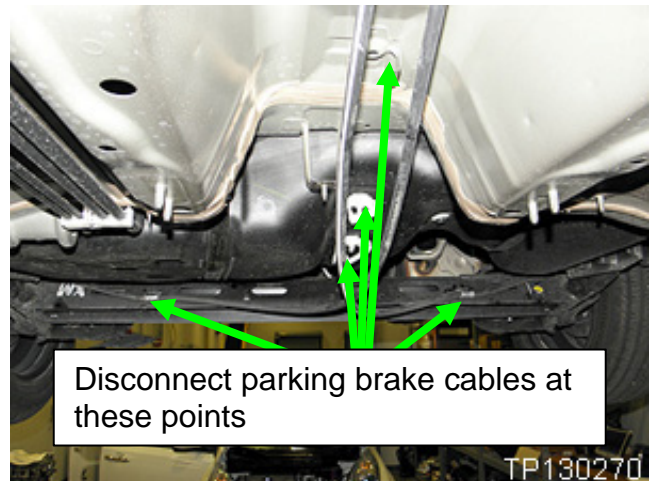


Figure 6

15. Disconnect recirculation line from fuel tank.
16. Disconnect fuel filler hose.
17. Disconnect vent hose from fuel tank.

- Do not bend or twist resin tube during installation and disconnection.
- To keep the connecting portion clean and to avoid damage and foreign materials, cover them completely with plastic bags (A) or something similar.
- Do not insert plug, preventing damage on O-ring in quick connector.

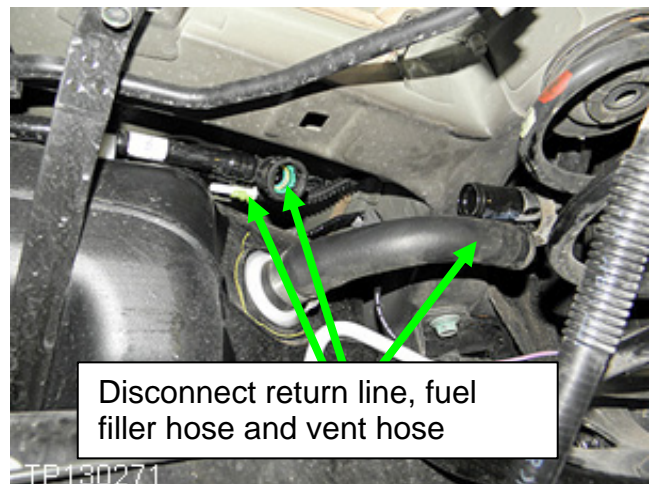


Figure 7

18. Support the center of the fuel tank with a suitable jack and secure the fuel tank to the jack.

CAUTION:

- Securely support the fuel tank with a piece of wood.
- Fuel tank may be in an unstable condition, due to the shape of the fuel tank bottom. Be sure to secure tank at all times.

19. Remove both of the fuel tank mounting bands (RH/LH).

20. Lower jack carefully to remove fuel tank while holding it by hand.

21. Place fuel tank on a work table.

22. Remove lock ring for fuel level sensor unit, fuel filter and fuel pump assembly with Tool by turning counterclockwise (if necessary).

- Tool number: KV991J0090 (J-46214)

23. Transfer fuel level sensor unit, fuel filter and fuel pump assembly to the new fuel tank with a new o-ring.

- Confirm that pump assembly orientation is correct before locking ring.

CAUTION:

- Do not bend float arm during removal.



Figure 8



Figure 9



Figure 10

Installation of fuel tank

Installation is in the reverse order of removal.

NOTE:

- Do not use any lubrication to aid with the installation of tubes and hoses.
- Before tightening the fuel tank mounting bands, install the filler hose to the length of 35 mm (1.38 in), all other hoses to 25 mm (0.98 in).
- Tighten the clamps until the head of the bolt is on the paint mark on the clamp band.
- Tighten mounting band bolts 1 and 2 to specification. Hand tighten mounting band bolt 3. While pushing the tank in the direction shown, tighten mounting band bolt 4 to specification then mounting band bolt 3.

Quick Connector

Connect quick connector as follows:

1. Check the connection for damage or any foreign materials.
2. Align the connector with the tube, and then insert the connector straight into the tube until a click sound is heard.
3. After connecting, check that the connection is secure by following method.
 - Visually confirm that the two tabs are connected to the connector.
 - Pull the tube and the quick connector to check they are securely connected.

Inspection

INSPECTION AFTER INSTALLATION

Use the following procedure to check for fuel leaks.

1. Turn ignition switch "ON" (with engine stopped), then check connections for leaks by applying fuel pressure to fuel piping.
2. Start engine and let it idle and check there are no fuel leaks at the fuel system connections.

PARTS INFORMATION

DESCRIPTION	PART NUMBER	QUANTITY
Fuel Tank	17202-EM31A	1
O-ring	17342-EM30A	1

CLAIMS INFORMATION

Submit a Campaign (CM) line claim using the following claims coding:
"CM" I.D. : PM353

DESCRIPTION	OP CODE	FRT
Inspect Fuel Tank Serial Number – OK Condition	PM3530	0.3

OR

DESCRIPTION	OP CODE	FRT
Inspect Fuel Tank Serial Number and Replace Fuel Tank	PM3531	1.5

OWNER'S LETTER

OWNER NOTIFICATION

NHTSA RECALL 13V-068

Dear Nissan Sentra Owner:

This notice is sent to you in accordance with the requirements of the National Traffic and Motor Vehicle Safety Act. Nissan has decided that a defect which relates to motor vehicle safety exists in 2013 Model year Nissan Sentra vehicles. Our records indicate that you own or lease the Nissan vehicle identified by the VIN on the inside of this notice.

Reason for Recall

Certain specific 2013 Model Year Sentra vehicles, including yours, may have been assembled with an out-of-specification fuel tank. As a result of this condition, a small amount of gasoline may leak from the fuel tank when full. If there is an ignition source in close proximity to the leaking fuel, this may increase the chance of a fire.

What Nissan Will Do

Your Nissan dealer will inspect the fuel tank on your vehicle to determine if it is affected. If necessary, the fuel tank will be replaced with a new one free of charge for parts and labor. The inspection should take less than an hour to complete. If your fuel tank needs to be replaced, the total time to complete the repair is 2 hours. However, your Nissan dealer may require your vehicle for a longer period of time based upon their work schedule.

What You Should Do

Contact your Nissan dealer at your earliest convenience in order to arrange an appointment to have your vehicle repaired. **Note: If you notice a strong fuel odor when refueling, please bring your vehicle to an authorized Nissan dealer to have it inspected.** Please bring this notice with you when you keep your service appointment.

If the dealer fails to, or is unable to make the necessary repairs free of charge, you may contact the National Consumer Affairs Department, Nissan North America, Inc. P.O. Box 685003, Franklin, TN 37068-5003. The toll free number is 1-800-NISSAN1 (1-800-647-7261). You may also submit a complaint to the Administrator, National Highway Traffic Safety Administration, 1200 New Jersey Avenue, SE., Washington, DC 20590; or call the toll-free Vehicle Safety Hotline at 1-888-327-4236 (TTY: 1-800-424-9153); or go to <http://www.safercar.gov>.

Federal law requires that any vehicle lessor receiving this recall notice must forward a copy of this notice to the lessee within ten days.

Thank you for your cooperation. We are indeed sorry for any inconvenience this may cause you.