

RECALL NOTIFICATION

RC033502, Reinforcement plate to be added to the rear bolts used to attach seat base through floor into chassis/floor steel frame.

NOTE: A electronic copy of this recall is available upon request from: Mel Williams, ARBOC Director of Parts & Warranty @ mwilliams@ARBOCsv.com

SAFETY:

Good mechanics safety practice must be followed in any repair.
 Safety practices should include but not limited to properly supporting the chassis, blocking tires and work area free of clutter.
 Repair shops required safety gear must be followed.
 OEM battery and auxiliary battery must be disconnected.

Read repair procedure before beginning. If you do not understand procedure contact: ARBOC Director of Parts & Warranty manager: Mel Williams @ 866-953-5555 or by E-mail @ mwilliams@ARBOCsv.com.

Condition: Reinforcement plates missing on the rear bolts used to attach the seat base through the floor.

Corrective Action: Add a reinforcement plate (ARBOC Part# 1305174) to rear seat base attachment location. In wheel well locations use reinforcement plate with the drill hole shifted to one side (ARBOC Part# 1305959).

Labor Operation Code: RC _____

Labor Time Allowance: 2 hours.

Disposal of Part: Discard all previously torque bolts, washers and nuts.

List of Units Involved In Recall:

	Start	SEATBELT	Shipped	BUS	Dealer	Customer	Descript	Unit	Chassis	Chassis Year
1	5/14/12	USR	7/2/12	3001062	EK COACHES	STILLAGUAMISH	SOM 23-G 165	1TCD08746C6204851	1GB6G5BG6C1152638	2012
2	5/14/12	USR	7/2/12	3001063	EK COACHES	STILLAGUAMISH	SOM 26-G 191	1TCD03966C6204852	1GB6G5BG4C1152864	2012
3	5/25/12	USR	6/28/12	3001121	EK COACHES	CLALLAM (12)	SOM 26S-DC 163	1TCD08755C6204865	1GB6G5BL3C1172732	2012
4	6/27/12	USR	8/3/12	3001128	ROHRER BUS	WILLOW VALLEY	SOM 26-G 191	1TCD03962C6204895	1GB6G5BGXC1168969	2012
5	7/10/12	USR	7/31/12	3001129	EK COACHES	ASOTIN CO	SOM 23-G 165	1TCD08748C6204902	1GB6G5BG1B1189224	2011
6	7/11/12	USR	8/9/12	3001139	CRESTLINE COACH	AHS-CANMORE	SOF 27-GC 191	1TCD03260C6204906	1GB6G5BG0C1174442	2012
7	7/12/12	USR	8/17/12	3001132	CRESTLINE COACH	DEMO EASTERN CANADA	SOM 26-GC 191	1TCD03961C6204905	1GB6G5BG4C1173522	2012
8	7/24/12	NON RET	8/22/12	3001140	HOGLUND BUS CO	ST CLOUD	SOM 26-D 163	1TCD08752C6204919	1GB6G5BL3C1177249	2012
9	7/25/12	USR	8/24/12	3001141	NATIONAL BUS SALES	KINGSFORT	SOM 26-G 191	1TCD03968C6204920	1GB6G5BG3C1176444	2012
10	7/26/12	USR	8/20/12	3001142	A-Z BUS SALES	AIR FORCE VILLAGE	SOM 28-G 210	1TCD03988C6204921	1GB6G5BG0B1182135	2011
11	8/3/12	USR	9/11/12	3001144	CREATIVE BUS	CARSON CITY	SOM 21-G 139	1TCD08923C6204933	1GB3G3BG1C1197428	2012
12	8/6/12	USR	9/11/12	3001145	CREATIVE BUS	CARSON CITY	SOM 21-G 139	1TCD08925C6204934	1GB3G3BG9C1195992	2012
13	8/6/12	USR	9/11/12	3001146	CREATIVE BUS	CARSON CITY	SOM 21-G 139	1TCD08927C6204935	1GB3G3BG7C1196882	2012
14	8/7/12	RET	8/29/12	3001148	ARCOLA BUS SALES	DEMO (2013)	SOM 26-G 191	1A9D04968D6925004	1GB6G5BG2C1193719	2012
15	8/15/12	USR	9/27/12	3001149	NORTHERN BUS	HUNT COMMUNITY	SOM 23-G 165	1TCD0874XC6204948	1GB6G5BG2C1195535	2012
16	8/17/12	RET	9/17/12	3001150	CREATIVE BUS	BULLHEAD CITY	SOM 28-G 210	1TCD03988C6204949	1GB6G5BG1C1195526	2012
17	8/17/12	RET	9/17/12	3001151	CREATIVE BUS	BULLHEAD CITY	SOM 28-G 210	1TCD03984C6204950	1GB6G5BG0C1195288	2012
18	8/23/12	RET	9/28/12	3001152	COLONIAL EQUIPMENT	GSA	SOM 23-D 165	1TCD08731C6204957	1GB6G5BL9C1174615	2012
19	8/23/12	USR	9/24/12	3001153	AMERICAN BUS	NE CARE CTR	SOM 28-G 210	1TCD03989C6204958	1GB6G5BG6C1196963	2012
20	8/24/12	USR	9/28/12	3001157	CRESTLINE COACH	BOW VALLEY	SOF 27-DC 183	1TCD03297C6204962	1GB6G5BLXD1110939	2013
21	8/24/12	USR	9/28/12	3001158	CRESTLINE COACH	BOW VALLEY	SOF 27-DC 183	1TCD03299C6204963	1GB6G5BL6D1112106	2013
22	9/2/12	USR	10/24/12	3001159	HOGLUND BUS CO	MVTA	SOM 26-D 183	1TCD08757C6204995	1GB6G5BL5C1192156	2012
23	9/24/12	USR	10/24/12	3001160	HOGLUND BUS CO	MVTA	SOM 26-D 183	1TCD08759C6204996	1GB6G5BL4C1194660	2012
24	9/25/12	USR		3001161	HOGLUND BUS CO	MVTA	SOM 26-D 183	1TCD08750C6204997	1GB6G5BL5C1194179	2012
25	9/25/12	USR		3001162	HOGLUND BUS CO	MVTA	SOM 26-D 183	1TCD08752C6204998	1GB6G5BL0C1194204	2012
26	9/26/12	USR		3001163	DYNAMIC SPECIALTY	GEORGE DERBY	SOM 28-GC 210	1A9D03989D6925010	1GB6G5BG5D1119170	2013

Tools Required:

- 2 People required. One for the interior of the bus, to remove and replace mounting hardware. Second person for the exterior under side of bus, to install reinforcement plate and mounting hardware.
- 1/2" Drive 3/4" Shallow Well Socket.
- 3/4" Combination Wrench or 3/4" Offset Wrench.
- 1/2" Drive Torque Wrench set to 60 ft/lb.

Repair kit Contains: Number Of Kits Is Based On Floor Plan.

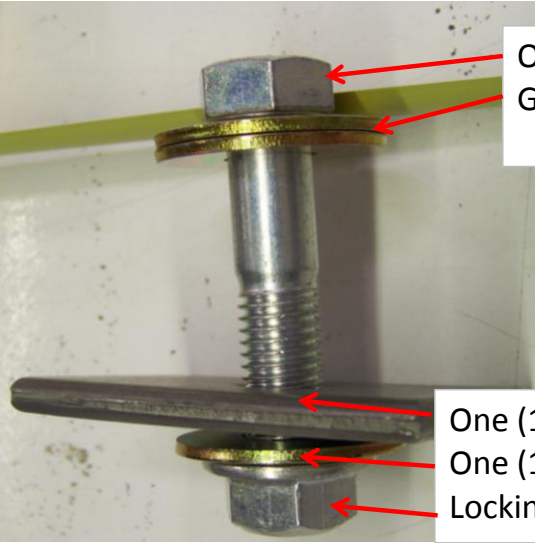
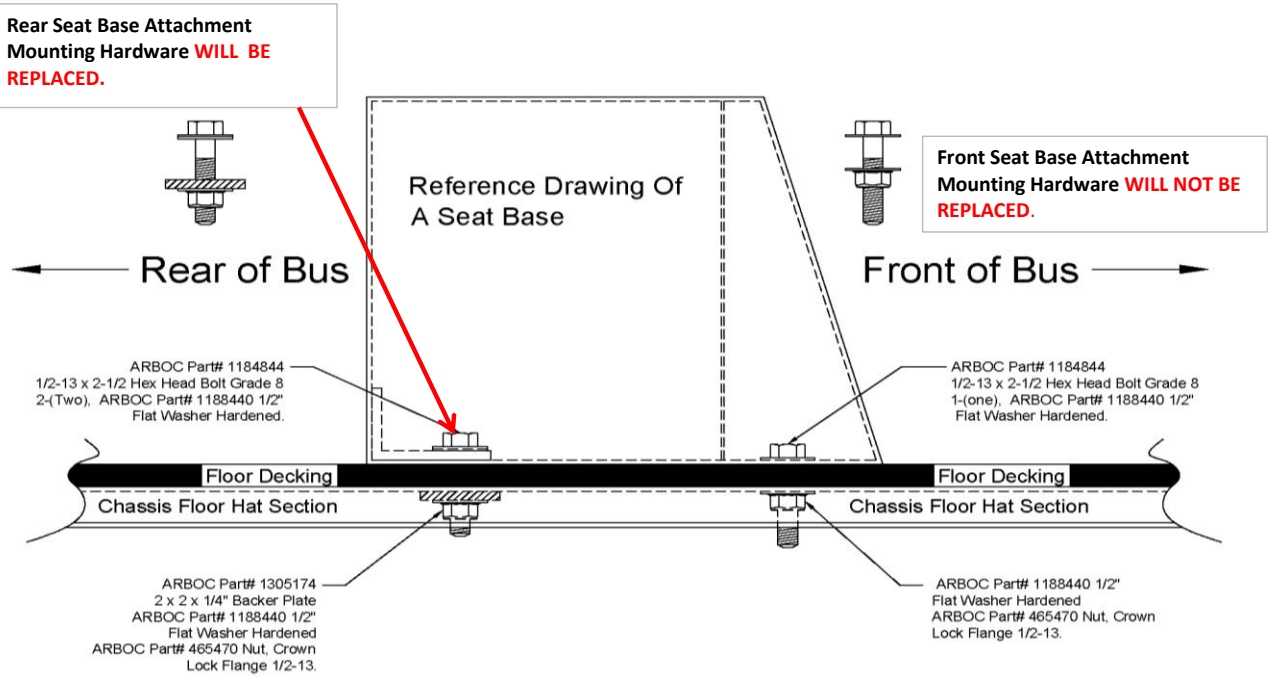
- ARBOC Part# 1184844, 1/2-13 x 2-1/2" Hex Head Bolt Grade 8.
- ARBOC Part# 1188440, 1/2" Washer Flat Hardened.
- ARBOC Part# 1305174 2 x 2 x 1/4, Backer Plate Steel
- ARBOC Part# 1305959 2 x 1-1/2 x 1/4 Backers Plate Steel (used in wheel well area)
- ARBOC Part# 465470, 1/2-13 Nut Crown Lock Flange.

ARBOC SPECIALTY VEHICLES LLC,
 51165 Greenfield Parkway, MIDDLEBURY IN 46540

RECALL NOTIFICATION

RC033502, Reinforcement plate to be added to the rear bolts used to attach seat base through floor into chassis/floor steel frame.

- Step 1: Pull bus onto a hoist capable of supporting the bus. Follow all shop safety rules when working on a bus supported by a hoist.
- Step 2: Locate bolts used to attach the rear of seat bases to the floor. Using a 3/4" shallow well socket and a 3/4" wrench, remove and discard the bolt, flat washers and nuts used to secure the seat base to the floor.
- Step 3: Interior of bus, install 1/2-13 x 2-1/2" Hex Head Grade 8 Bolt (ARBOC Part# 1184844), With two (2), 1/2" Hardened Flat Washers (ARBOC Part# 1188440) at head of bolt. Insert bolt in present mounting locations.
- Step 4: Exterior of bus, under the vehicle, install 1/4" steel reinforcement plate (ARBOC Part# 1305174), One (1) 1/2" Hardened Flat Washer (ARBOC Part# 1188440) and 1/2-13 Flange Crown Lock Nut (ARBOC Part# 465470) to bolt.
- Step 4A : **In the wheel well location**, use reinforcement plate with a 2 x 1-1/2 x 1/4" (ARBOC Part# 1305959).
- Step 5: With a person holding the nut from the underside of bus and a person on the interior of the bus, torque all new bolts replaced in each seat to **60ft/lb (-0,+5) rating**.
- Step 6: After torque bolt, mark the head of bolt with a China marker to insure no bolts have been missed. Move to next location.



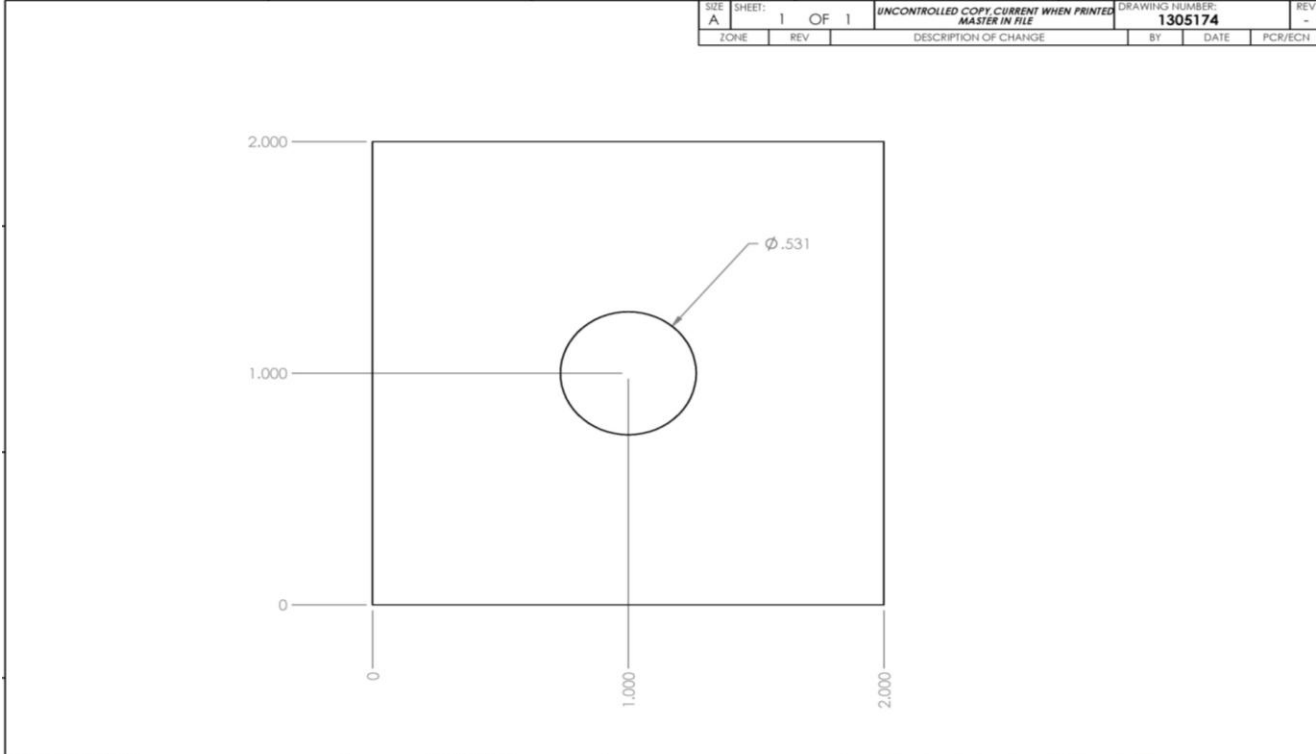
One (1) 1/2-13 x 2-1/2" Hex Head Bolt Grade 8, Two (2) 1/2" Hardened Flat

One (1) Reinforcement Plate ARBOC Part# 1305174, One (1) 1/2" Hardened Flat Washers, One (1) 1/2-13 Locking Flange Crown Nut.

RECALL NOTIFICATION

RC033502, Reinforcement plate to be added to the rear bolts used to attach seat base through floor into chassis/floor steel frame.

ARBOC Print of ARBOC Part# 1305174 2 x 2 x 1/4 Backer Plate with .531 Hole.



SIZE A	SHEET: 1 OF 1	UNCONTROLLED COPY, CURRENT WHEN PRINTED MASTER IN FILE	DRAWING NUMBER: 1305174	REV -
ZONE	REV	DESCRIPTION OF CHANGE	BY	DATE

MATERIAL: .250 HRS
ALLOY: ASTM A36
BLANK SIZE: LASERED
FINISH WEIGHT: 0.27 LBS
DENSITY: 0.28 LBS/IN ³
FINISH: -
SURFACE AREA: 9.97 IN ²
ALLOCATION MAT'L SIZE: 2.500 X 2.500
ALLOCATION MAT'L WEIGHT: .443 LBS

TOLERANCES:
FLOOR PLAN DIMS: ±1/8"
FRACTIONAL DIMS: ±1/16"
2 PLACE DECIMAL DIMS: ±.01
3 PLACE DECIMAL DIMS: ±.005
THIRD ANGLE PROJECTION

ARBOC SPECIALTY VEHICLES CLAIMS PROPRIETARY RIGHTS IN THE MATERIAL DISCLOSED HEREON. WHETHER THIS DRAWING NOR ANY REPRODUCTION THEREOF MAY BE USED TO MANUFACTURE ANYTHING SHOWN HEREON WITHOUT PERMISSION IN WRITING FROM ARBOC SPECIALTY VEHICLES TO THE USER SPECIFICALLY REFERRED TO IN THE DRAWINGS. INFORMATION CONTAINED HEREON MAY BE THE EXPRESS PROPERTY OF ARBOC SPECIALTY VEHICLES AND PROTECTED IN THE FORM OF A U.S. PATENT.
SIGNATURES/DATES
DRAWN: IMF 4-12-12
CHECKED: - -

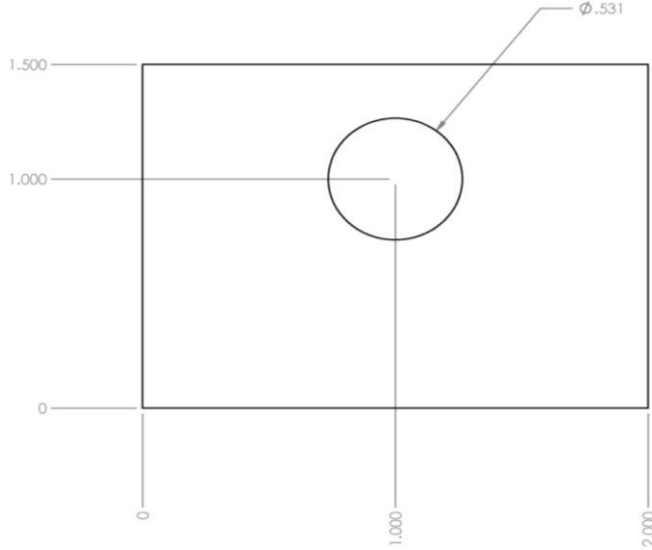
DESCRIPTION: 2 X 2 X .25 BACKER PLATE .531 HOLE	
SIZE A	DOC. # AME-008A REV 1: 11-18-11
DRAWING NUMBER: 1305174	REV -
SCALE: 1:1	NEXT ASSY:

RECALL NOTIFICATION

RC033502, Reinforcement plate to be added to the rear bolts used to attach seat base through floor into chassis/floor steel frame.

ARBOC Print of ARBOC Part# 1305959 2 x 1-1/2 x 1/4 Backer Plate with .531 Hole.

SIZE A	SHEET 1	OF 1	UNCONTROLLED COPY CURRENT WHEN PRINTED MASTER IN FILE	DRAWING NUMBER: 1305959	REV -
ZONE	REV	DESCRIPTION OF CHANGE		BY	DATE



MATERIAL: .250 HRS
 ALLOY: ASTM A36
 BLANK SIZE: LASERED
 FINISH WEIGHT: 0.20 LBS
 DENSITY: 0.28 LBS/IN³
 FINISH: -
 SURFACE AREA: 7.72 IN²
 ALLOCATION MATL SIZE: -
 ALLOCATION MATL WEIGHT: .443 LBS

TOLERANCES:
 FLOOR PLAN DIMS: ±1/8"
 FRACTIONAL DIMS: ±1/16"
 2 PLACE DECIMAL DIMS: ±.01
 3 PLACE DECIMAL DIMS: ±.005

ARBOC SPECIALTY VEHICLES CLAIMS PROPRIETARY RIGHTS IN THE MATERIAL DISCLOSED HEREON. NEITHER THIS DRAWING NOR ANY REPRODUCTION THEREOF MAY BE USED TO MANUFACTURE ANYTHING SHOWN HEREON WITHOUT PERMISSION IN WRITING FROM ARBOC SPECIALTY VEHICLES TO THE USER SPECIFICALLY REFERRING TO THE DRAWINGS. INFORMATION CONTAINED HEREON MAY BE THE EXPRESS PROPERTY OF ARBOC SPECIALTY VEHICLES AND PROTECTED IN THE FORM OF A U.S. PATENT.



THIRD ANGLE PROJECTION



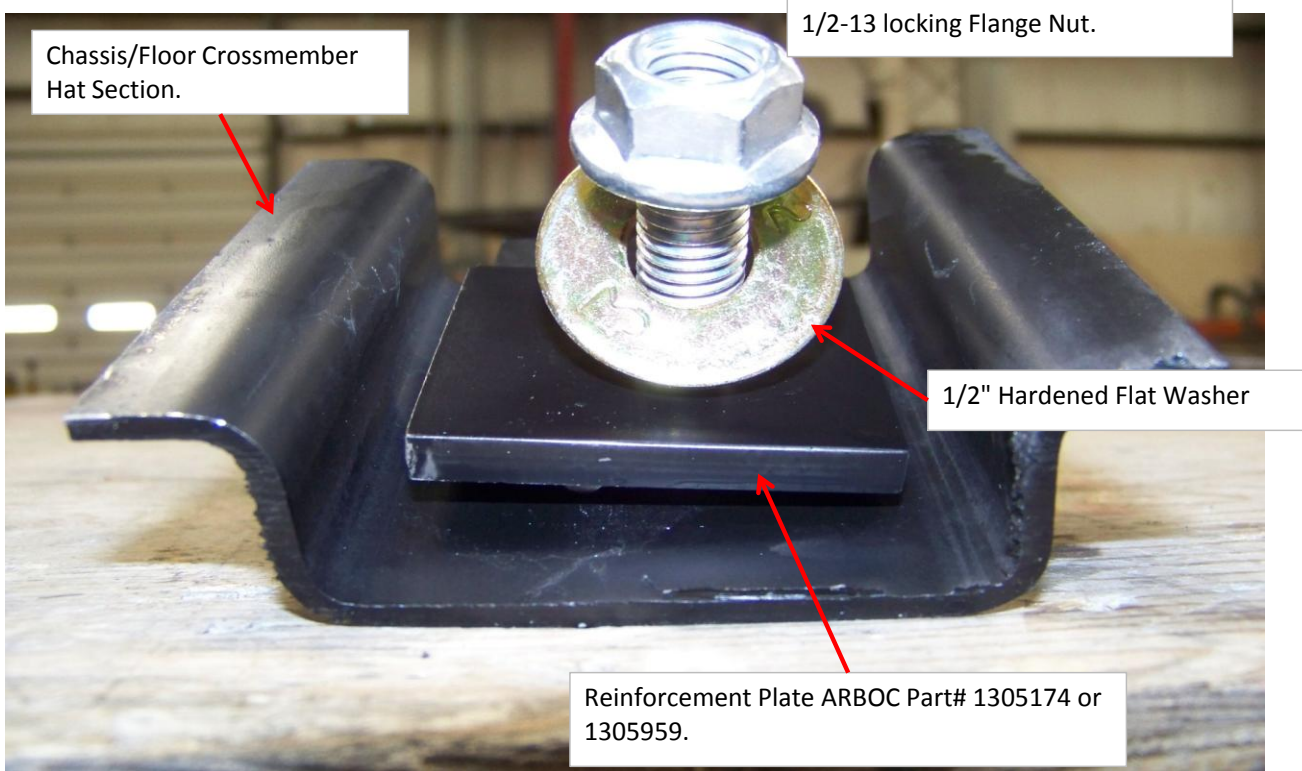
SIGNATURES/DATES
 DRAWN: Scott D 12/7/12
 CHECKED: - -

DESCRIPTION: 1.5 X 2 X .25 BACKER PLATE .531 HOLE			
SIZE A	DOC. # AME-008A REV1 : 11-18-11	DRAWING NUMBER: 1305959	REV -
SCALE: 1:1	NEXT ASSY:	SHEET: 1	OF 1

RECALL NOTIFICATION

RC033502, Reinforcement plate to be added to the rear bolts used to attach seat base through floor into chassis/floor steel frame.

Reference view of how seat base attachment look like, From under the bus.



Torque Requirement is 60 ft/lb (-0,+5)

CLAIM FILING PROCEDURE

Complete all information requested on your original repair order.

1. Completed description of repair, including the Recall Notification: RC033502.
2. Claim: 5 labor hours total.
3. [Submit the completed claim to ARBOC Service Online at: arbocsv.com](http://arbocsv.com)