



Recall Action Notice

**Service Bulletin 483
January 2013**

Affected ModelsTrophy SE

VIN Range.568259 - 577534

Subject.NHTSA Label

MarketsUS market only

Background information

We have identified that the NHTSA label contains incorrect information.

Customer contact instructions

Triumph America Ltd. must instigate a recall action in accordance with the national recall code of practice. For vehicles in dealer stock, the recall **MUST** be actioned before delivery to the customer.

Identification of affected motorcycles

Trophy SE motorcycles listed in the VIN range above.

Warranty claim instructions

Fault code039010993

Repair code99483

Repair time allowance0.02 hrs (includes admin allowance)

Parts1 x T3930150 - NHTSA Label

Parts ordering instructions For Triumph Subsidiary dealers using Triumph

Warranty On-Line: Order all repair parts by submitting a New Prior through the Warranty On Line system. Entering the above repair code in a New Prior will automatically add the necessary parts and labour times for this Service Bulletin.

The NHTSA label will be supplied via Triumph America Ltd. NHTSA labels are supplied printed with the VIN of the motorcycle to which it relates. Ensure the VIN number on the new label matches that of the motorcycle it is to be fitted to. If a label is damaged during installation, a new label will require ordering from Triumph Motorcycles.

Parts return instructions No parts to return

Other Instructions

Once completed, please mark the service record book that the requirements of this recall action have been complied with.

Replacement Procedure

Replace following the procedure listed below:

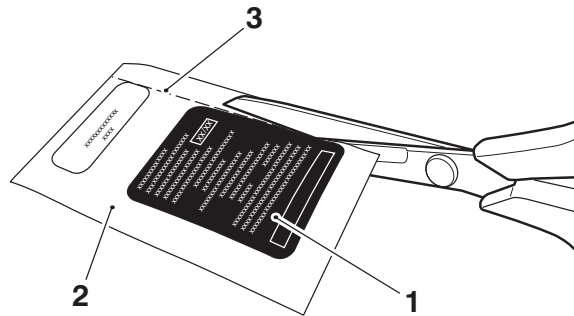
 **Warning**

Throughout the following procedure, ensure the motorcycle is stabilised and adequately supported. This will help prevent it from falling and causing injury to the operator or damage to the motorcycle.

 **Caution**

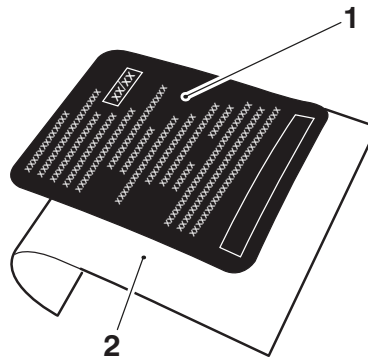
NHTSA labels are supplied pre-printed with the VIN of the motorcycle to which it relates. Ensure the VIN number on the new label matches that of the motorcycle it is to be fitted to. Once the label has been applied, it cannot be removed without irreparable damage.

1. Trim the backing paper from the right hand side of the label.



1. Label
2. Backing paper
3. Cut line

2. Partially roll back the backing paper to expose the adhesive at the top of the label.

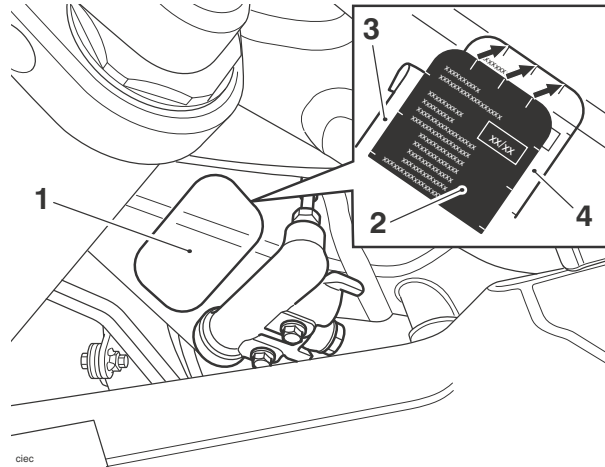


1. Label
2. Backing paper

Note:

- **The NHTSA label is located on the left hand side of the steering head (headstock).**
3. Move the steering over onto full right hand lock to gain access to the original NHTSA label located on the left hand side of the steering head (headstock).

4. Taking the new label through the gap between the bodywork and the steering head (headstock), carefully align the top edge of the new label with the top edge of the original label ensuring that the three vertical lines are also aligned.



1. Label position on steering head (headstock)
2. New label
3. Backing paper
4. Original label (shown in white for clarity)

5. Once the label edges are aligned, accurately affix the top part of the label and gradually pull away the backing paper then gently affix the rest of the label.
6. Once the whole label is accurately affixed, firmly rub down to remove any air bubbles.

Circulation

(Initial and date when read and return to central file holder)

| Service Manager | Parts Manager | Sales Manager | Workshop Supervisor | Technician 1 | Technician 2 |
|-----------------|---------------|---------------|---------------------|--------------|--------------|
| | | | | | |