

FOREST RIVER INC.

2013 LP GAS RECALL
US 12V-458/CANADA 2012-305
OCTOBER 2012

RECALL SUMMARY

Forest River, Inc. has determined that a defect which relates to motor vehicle safety may exist in certain 2010, 2011, 2012, 2013 Sunseeker, Forester, and Lexington model Class C motorhomes. The issue found in the affected vehicles pertains to a specific bracket that secures the propane delivery system. This bracket is only found under slide out rooms which contain a kitchen range or refrigerator. The bracket may become loose and possibly detach from the slide room floor. In the event the propane securing bracket detaches it may cause a propane leak resulting in a fire.

IDENTIFICATION BY MODEL

LEXINGTON 283 MODEL

SUNSEEKER MODELS 2860,3120, 3170

FORESTER MODELS 2861, 3121, 3171

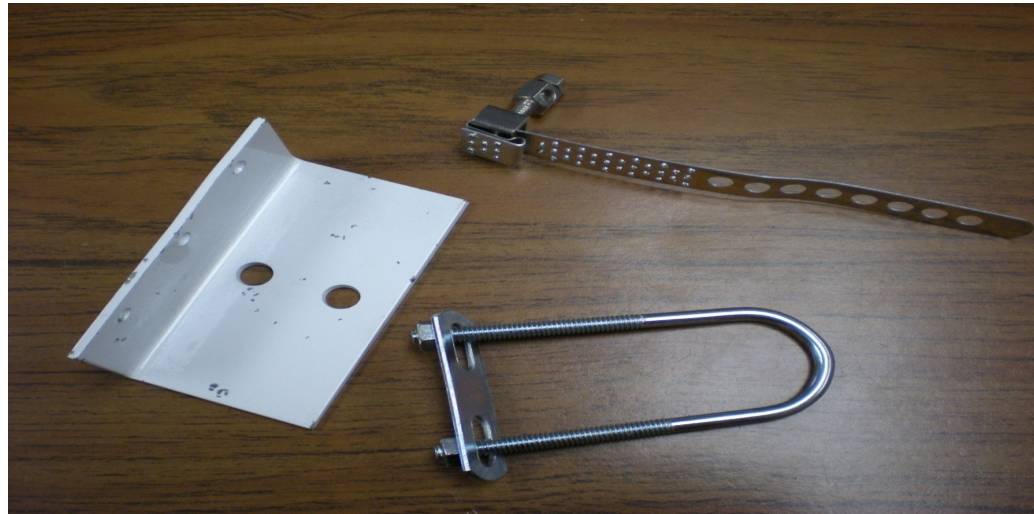
IDENTIFICATION BY FOREST RIVER SERIAL NUMBERS

- LEXINGTON: LEF005385 THRU LEF005668
- LEXINGTON GT: LGF005308 THRU LGF005659
- SUNSEEKER : SSF018604 THRU SSF024050
- FORESTER : FRF018619 THRU FRF023947

REPAIR PROCEDURE

- **BEFORE ANY REPAIRS ARE STARTED MAKE SURE THE LP TANK VALVE IS TURNED OFF AND LP LINES HAVE BEEN BLED OFF TO ENSURE THE LP SYSTEM IS NOT UNDER LP PRESSURE.**
- **Start by removing the bracket and U-bolt on the LP line, the grounding bracket, ground wire, and black plastic flex guard. All found under the slide room (Example A). Disconnection of the LP line is not required or necessary.**
- **Fit the new bracket into place with the U-bolt holes against the slide room floor. Mark where the new U-bolt holes will need to be drilled.**
- **Locate the interior 12 volt junction box under the range or refrigerator appliance (Example B). Remove the drawer under the appliance to access the junction box for inspection. The junction box and/or wiring may need to be moved before drilling into the slide out floor. You can simply raise the junction box to prevent any disconnections (Example C)**
- **Drill the marked holes in the floor from under the slide out.**
- **Install ground wire to the steel LP line using the new smaller ground strap.**
- **Insert the U-bolt and attach the LP line to the bracket. The U-bolt must secure the LP line at the collar, not at the fitting (Example D).**
- **Secure the U-bolt from under the appliance and replace the drawer. The U-bolt should be tightened enough to secure the LP line, but not tight enough to cause damage to the LP line.**
- **Once the U-bolt is tightened down, the black plastic flex guard may be reattached to the new bracket.**
- **If for any reason a disconnection is made on the LP delivery system, a pressure test must be done after repairs**

PARTS NEEDED

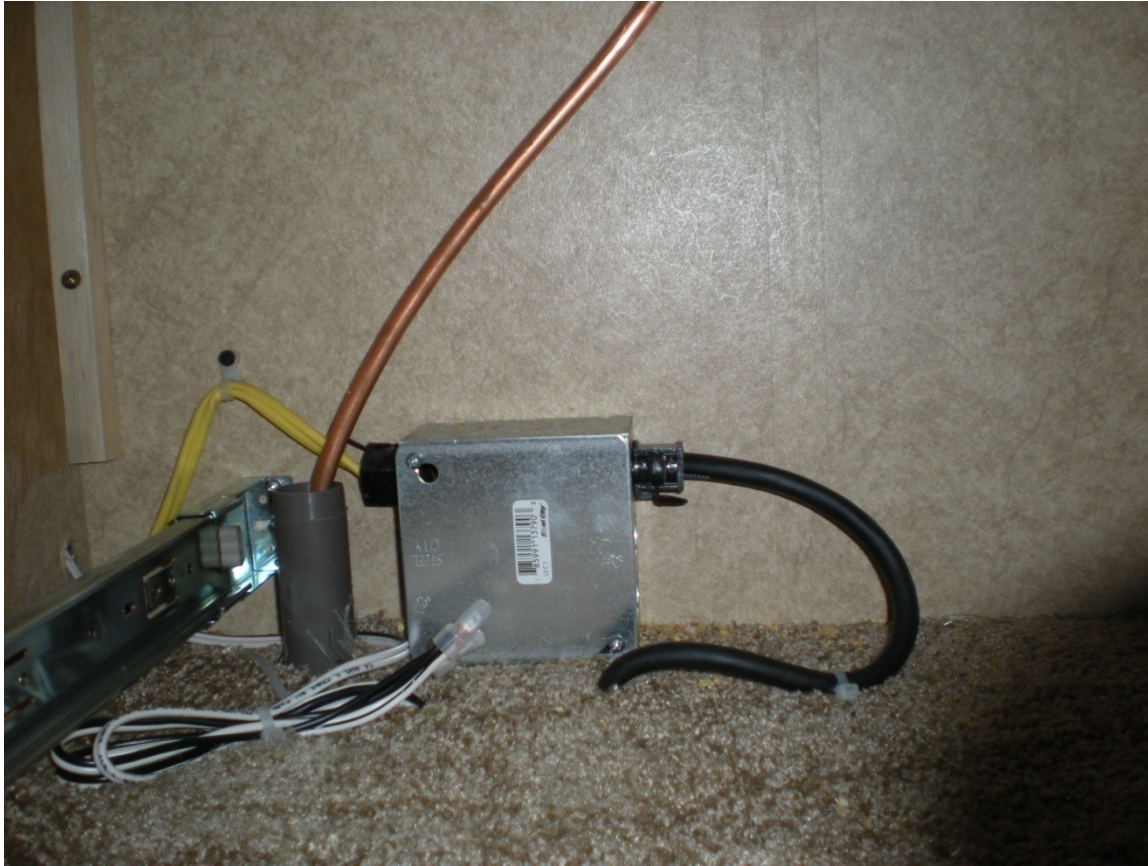


New bracket, U-bolt, and ground strap can be ordered as a kit from Forest River using part number 50G 01856A



Example A

EXTERIOR UNDER SLIDE OUT



Example B

INTERIOR JUNCTION BOX



Example C

RAISED JUNCTION BOX



Example D

EXAMPLE OF A COMPLETED REPAIR

Forest River asks for your help to resolve any units possibly affected by this bulletin. We ask that your dealership inspect any units in this serial range that may be in your inventory or at your facilities for service. If any units are discovered with this potential defect, we ask they be repaired promptly using the above procedure and submitted to Forest River for reimbursement by warranty claim. The proper flat rate code for warranty submittal is 50-004010

In the event you need to order the parts from Forest River, all of these parts are available as a kit using Forest River part number 50G 01856A

We appreciate your help and attention to this bulletin and welcome your contact should you have questions.

Forest River customer service

574-206-7600