



Safety Recall Trucks

Date	Group.	No.	Page
11.12	SC0365		1(9)

Forward Lighting Operation
CHU, CXU

SAFETY RECALL INFORMATION:

Mack Trucks (Mack), has decided that a defect relating to motor vehicle safety may exist in certain Mack, CHU and CXU model vehicles manufactured from October 13, 2006 to December 23, 2009.

The concern is that the low beam head lamp operation may be interrupted if a short circuit occurs in the fog lamp circuit. If operation of the low beam head lamp is interrupted, the driver may lose visibility and may result in vehicle crash. To resolve this issue a new overlay harness should be installed. For additional information reference the following procedure.

VEHICLES AFFECTED:

Certain Mack, CHU and CXU model vehicles equipped with day time running lamps and fog lights, manufactured from October 13, 2006 to December 23, 2009.

VEHICLE IDENTIFICATION NUMBERS (VIN):

There are five thousand twenty three (5023; 3853, USA, 1168 Canadian and two (2) export) vehicles affected by this recall.

Required Parts

PART NUMBER	QUANTITY	DESCRIPTION
22012391	1	Chassis Overlay Harness
21741614	1	Relay Mounting Bracket980881
980881	3	Cable Tie w/ Pushin Retainer
990949	2	Flange Nut M6
984733	1	Bolt 16mm M8
980464	19	Cable Tie

Repair Procedure

DANGER

Before working on a vehicle, set the parking brake, place the transmission in neutral, and block the wheels. Failure to do so can result in unexpected vehicle movement and can cause serious personal injury or death.

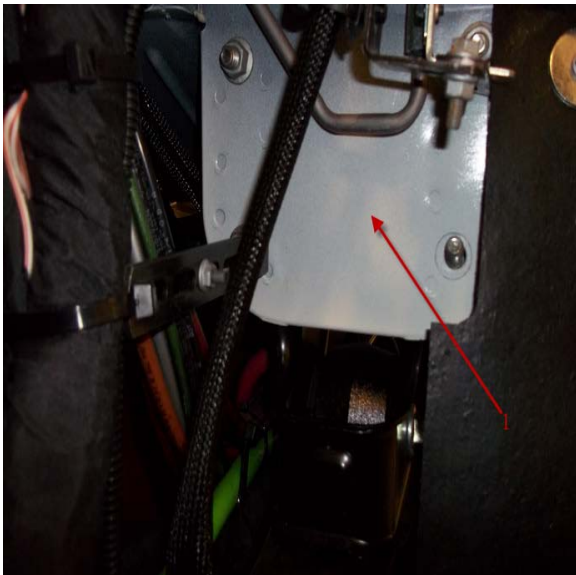
DANGER

You must read and understand the precautions and guidelines in Service Information, group 3, "General Safety Practices, Electrical" before performing this procedure. If you are not properly trained and certified in this procedure, ask your supervisor.

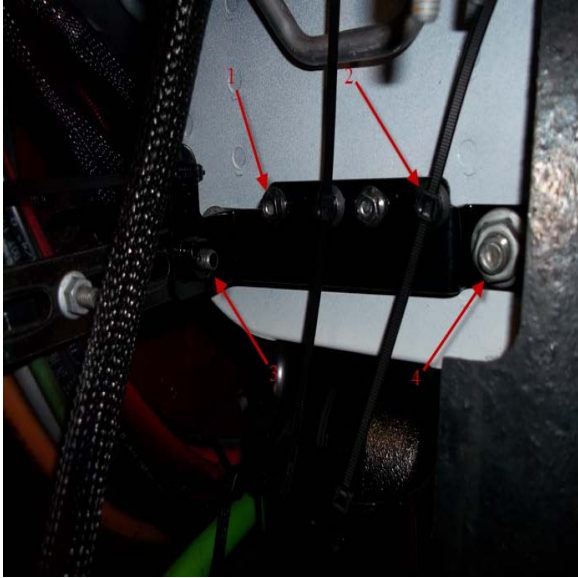
1. Remove the grill from the hood.
2. Install the relay mounting bracket at the location shown in the following illustrations; bulkhead location for bracket (1). Torque the M8 fasteners to 30 +/- 5 Nm (22 +/- 3.7 ft-lb). Torque Cab knee nut to 68 +/- 6 Nm (50 +/- 0.5 ft-lb).

NOTE: The L-bracket may be rotated in order to mount the relay bracket.

NOTE: Push in the barbed anchors for the cable ties (980881).



(1) Bulkhead location for bracket.



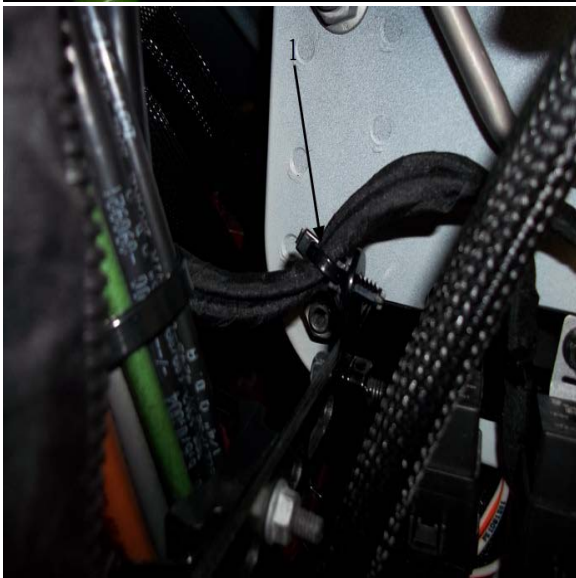
1 and 2 - Install cable ties with pushin retainer

3 - Secure new bracket to existing bracket

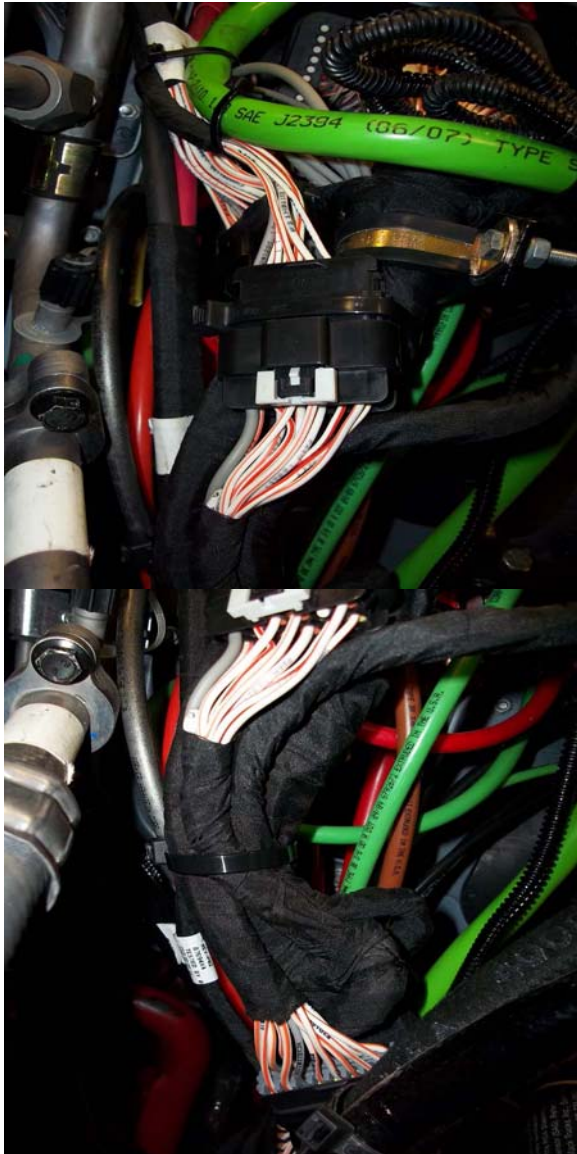
4 - Remove existing nut and install bracket. **Torque the M8 fasteners to 30 +/- 5 Nm (22 +/- 3.7 ft-lb). Torque Cab knee nut to 68 +/- 6 Nm (50 +/- 0.5 ft-lb).**

3. From the left side of the steering column to the hood area, loosely route the overlay harness into position from end to end. Use cable ties as needed to hold the harness in place but do not tighten.

4. Install both overlay harness relays to the bulkhead mounted bracket as illustrated. Torque the fasteners to 10 +/-1.5 Nm (7 +/- 0.5 ft-lb). To secure the harness relays use cable ties with pushin retainers (1).



5. Connect the overlay harness to the 16 pin connector (CIEC) located at the bulkhead, to the left of the steering column. Space the connectors out allowing the harness to spread out as evenly as possible. Reinstall and secure the connector locks.



6. *** This step applies to MACK CXU vehicles only.
 - A. On the horizontal crossbar, connect the overlay harness to the head light harness connector. Secure the connector and harness with cable ties.
 - B. Remove the p-clip and bolt securing the hood harness from the vertical portion of the hood (stand-off bracket).
 - C. Route the hood harness under the stand-off bracket, overlay harness and connector above the stand-off bracket. Secure the connector and harness with cable ties.

NOTE: Ensure the connector locks are reinstalled and secured.

NOTE: Cable tie the connectors and harness to the hood cross bar.

NOTE: Raise and lower the hood and check for any binding or other potential trouble areas. Adjust and reposition the harness as needed.



Original Harness Connection

1. Front Chassis Harness Connection
2. Hood Harness Connection



Retrofitted Harness Connection

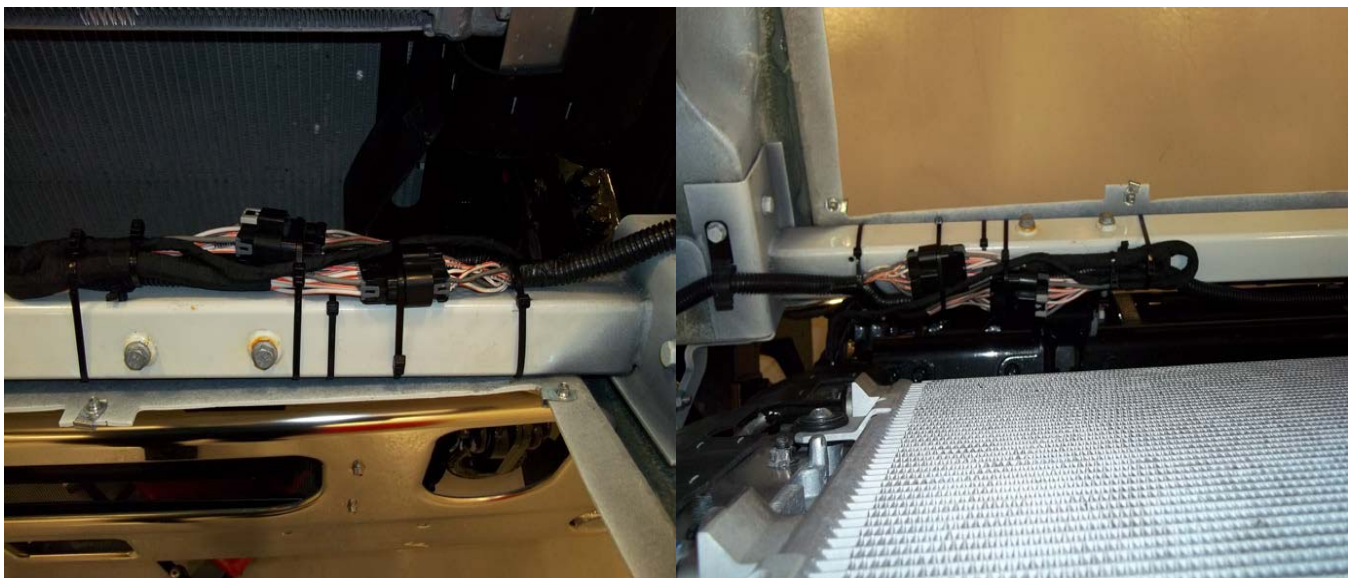
- 1. P-Clip Removed
- 2. Front Chassis Harness Connection
- 3. Overlay Harness (Part Number 22012391)
- 4. Hood Harness Connection

7. *** This step applies to MACK CHU vehicles only.
Connect the overlay harness to the head lamp harness. Space the connectors out and allow the harness to spread out evenly.

NOTE: Ensure that the connector locks are reinstalled and secured.

NOTE: Cable tie the connectors and harness to the hood cross bar.

NOTE: Raise the hood and check for any binding or other potential trouble areas. Adjust and position the harness as needed.



8. Secure the remaining sections of the overlay harness with cable ties.

NOTE: Any remaining overlay harness length should be overlapped, cable tied and evenly spaced inside the frame.

9. Install the grill. Torque fasteners to 7 +/- 0.8 Nm (2.9 +/- 0.6 ft-lb).

10. Install all previously removed cables to the ground (negative) battery terminals.

Reimbursement

This repair is covered by an authorized Safety Recall campaign. Reimbursement is obtained through the normal claim handling process.	
Claim Type (used only when uploading from the Dealer Bus. Sys.)	40
Vehicle repaired per instructions	2-Modified per instructions
Labor Code	
Primary Labor Code	7414C-01-95 - 1.0 hrs.
Time to take charge of vehicle	101AA-0A-00 - 0.3 hrs.
Causal Part	20999387
Authorization No.	SC0365

Take-charge time is not included in the labor code for this operation. Take charge may be eligible, but can only be used once per vehicle repair visit. If the vehicle is having other warranty repairs performed, take-charge should be charged to the warranty repair, otherwise take-charge can be charged to this Safety Recall campaign.

Dealers are to perform Safety Recall Campaigns on all subject vehicles at no charge to the vehicle owner regardless of mileage, age of vehicle or ownership (original purchaser or subsequent purchasers). Whenever vehicles are subject to a safety recall are brought to your dealership for service, or taken into your dealership vehicle inventory, it is strongly recommended that every effort be made to perform the recall correction before the vehicle is sold or released to the owner.