

Safety Recall

SR12-61

Date	Expiration	Group	No.	Page
09.2012	n/a	8		1(12)

PASSENGER SEAT TRACK INSPECTION AND REPAIR.

9700 (B13R)

MODEL YEAR(S) AND VEHICLES INVOLVED

NOTICE TO SERVICE CENTERS Verify vehicle eligibility by checking bulletin status with SAP	
Models affected	Vehicles affected
9700 us/can Model Year : 2009 up to 2011	From 3CET2M627 <u>95127142</u> up to 3CET2S22X <u>B5145926</u> incl.
This bulletin does not necessarily apply to all the above-mentioned vehicles. Please refer to <i>SAP</i> or <i>Vehicle Warranty Information</i> tool found on Prevost-Systems tab of the Volvo Trucks Dealer Portal for exact status.	

DESCRIPTION

The vehicles involved in this safety recall campaign present an increased risk of personal injury to passengers. The purpose of this procedure is to verify the condition of the passenger seat mounting track (wall mounts) to ensure that there has been no damage due to over-torqueing and perform repair if needed. Read entire procedure before beginning inspection, as there are important details to be noted.

If you do not have the ability or the required tooling to perform this bulletin, please contact your Prevost Service Center or Authorized Service Provider to schedule an appointment at your earliest convenience. Please mention Safety Recall SR12-61. A complete list of all 135+ affiliated Prevost service points is available on www.prevostcar.com/network.

This is a two part procedure. Part I is the inspection. If damage to the seat tracks is found, proceed to Part II, seat track repair.

Date	Expiration	Group	No.	Page
09.2012	n/a	8		2(12)

PROCEDURE – PART I: INSPECTION

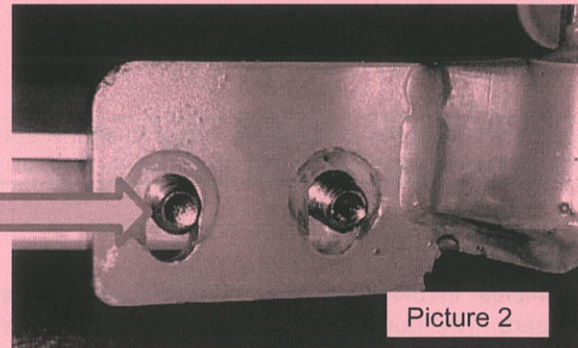
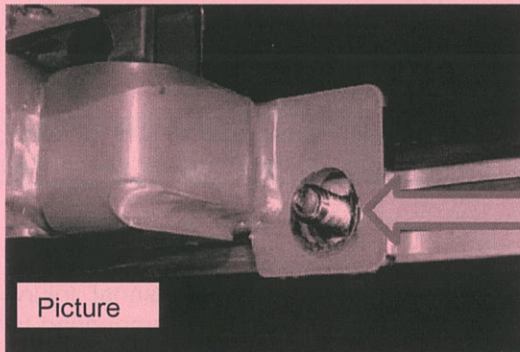


DANGER

Park vehicle safely, apply parking brake, stop engine. In the battery box, set the battery cut-off switch to the OFF position prior to working on the vehicle.

1. Take all mounting nuts off the wall mounts.

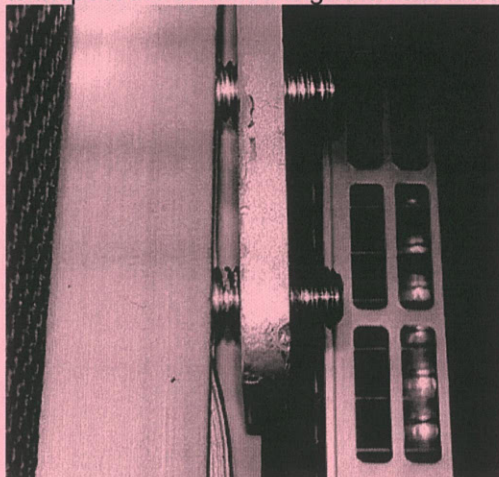
When the first nut is removed (picture 1), you will notice that the holes on the mounting brackets are slotted and they are generally NOT resting all the way down, but the seat has a tendency to “drop” on that side when the last nut is removed. **DO NOT look through the holes on the brackets for inspection.**



2. Once the mounting nuts have been removed from the wall, the seat can be easily separated from the track without loosening the floor pedestal

A “good” track (as shown on picture 3 below) will look perfectly flat around the bolt. If there is any deformation of the track surface around the bolt, which would be a sign of over-torqueing, as the track has begun to “pull through” the mounting bracket.

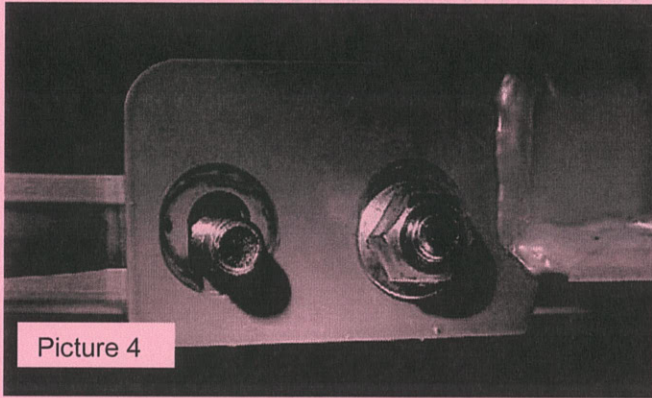
This type of damage can generally NOT be noticed through the mounting holes, this is why it's important to inspect the track looking at it from the top (as shown on picture 3)



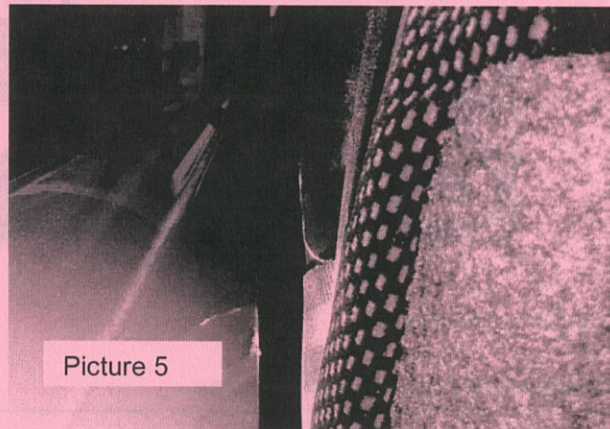
Picture 3

Date	Expiration	Group	No.	Page
09.2012	n/a	8		3(12)

NOTE: you must inspect all seats on the side being worked on BEFORE re-assembling hardware, because if there's any damage found, you will be taking all that hardware back off to perform the necessary repair.



Picture 4

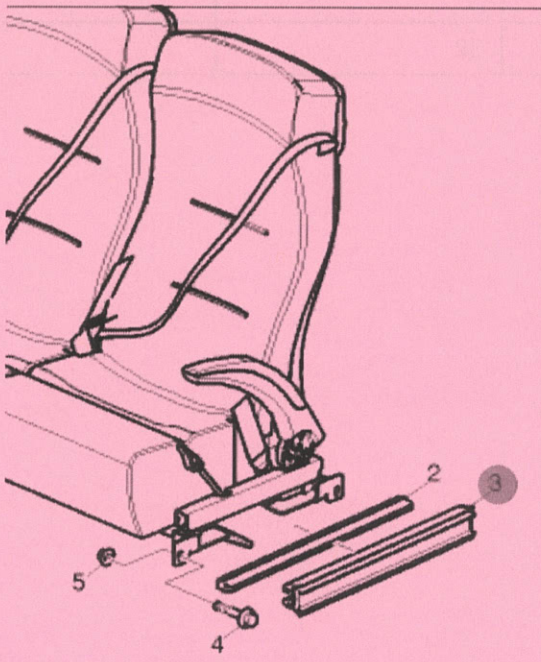


Picture 5

- Once all the seat mounts have been inspected and no damage found, be sure to push each seat up on that side as it's being tightened. Verify torque to **23 lbf-ft.**

If the seat is too low on the wall side, it will pitch the backrest to where it might interfere with the emergency exit window. Once mounting is complete *always verify that the window can be opened freely*, without the bar touching the seat. This is extremely important

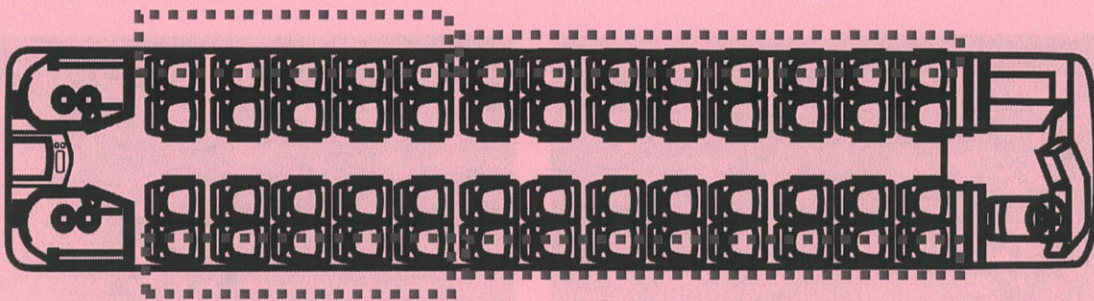
- If damage is found, replace the seat rail (p/n 70349139) according to Part II of this bulletin.



Pos.	Part No.	◀ ▶ A	Description
<input type="checkbox"/>	2	X	rubber moulding
<input checked="" type="checkbox"/>	3	X	seat rail
<input type="checkbox"/>	4	X	hexagon screw
<input type="checkbox"/>	5	X	flange lock nut

Date	Expiration	Group	No.	Page
09.2012	n/a	8		4(12)

PART II: SEAT RAIL REPAIR



Bus has 4 rail sections.

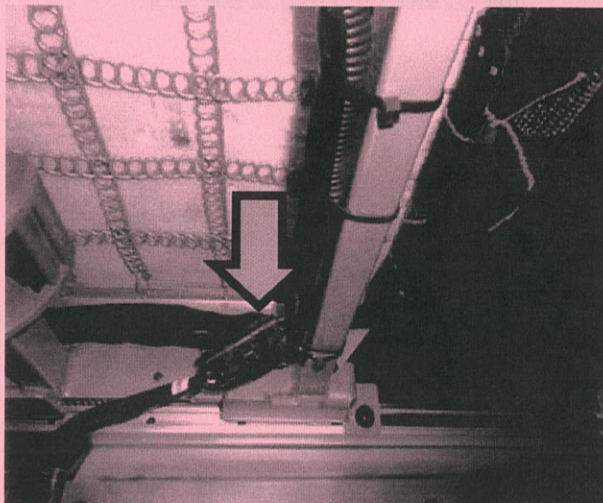
Material required for 1 rail section.

Part Number	Description	Qty (per 6m section)	Comments
972186	Six point socket screw, tapping T25, drive	60 pc	
70349139	Seat rail	1	4 per bus
970947	Hexagon screw	24	
971098	Flange lock nut	24	
70368856	Screw	1	
864929	Clip, seat panel	32	

Date	Expiration	Group	No.	Page
09.2012	n/a	8		5(12)

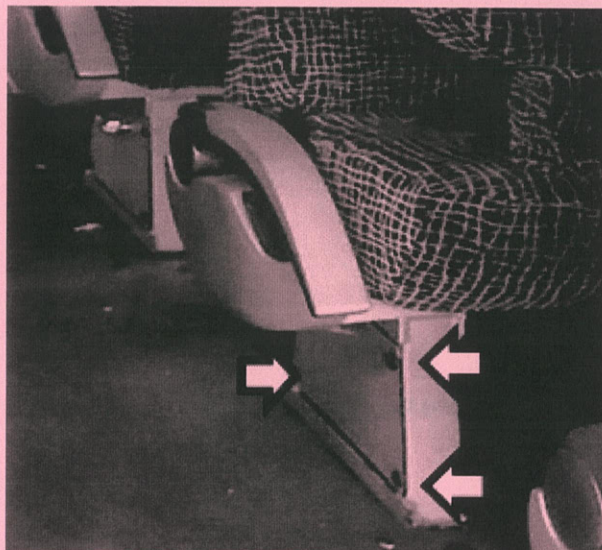
Procedure:

1. Disconnect the harness wiring at the bottom of each seat.



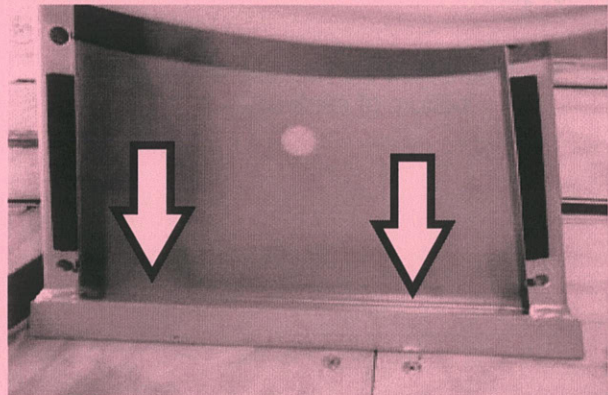
2. Remove clips 864929 from the seat frame cover

Note: Do not re-use removed clips

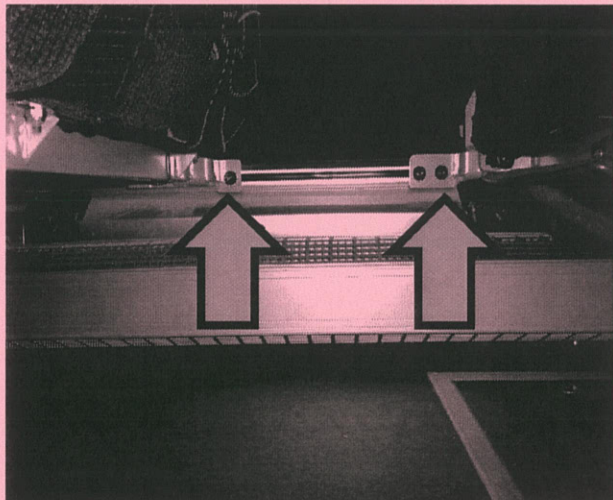


Date	Expiration	Group	No.	Page
09.2012	n/a	8		6(12)

3. Remove the seat frame cover and remove the screws (965185) in the floor.



4. Remove the nuts (971098) on the seat rail.
Note: Do not re-use removed nuts

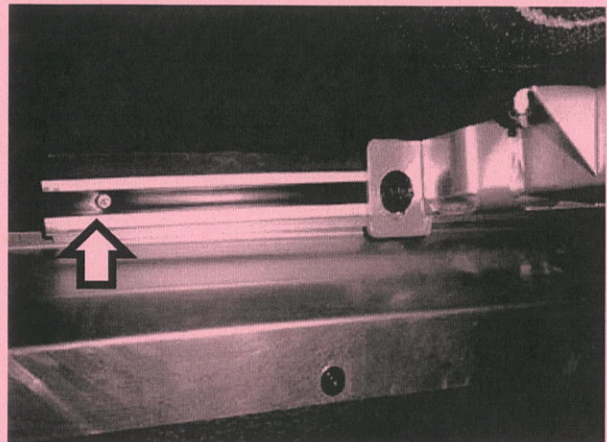


5. Remove the row seats of the damaged rail side.



Date	Expiration	Group	No.	Page
09.2012	n/a	8		7(12)

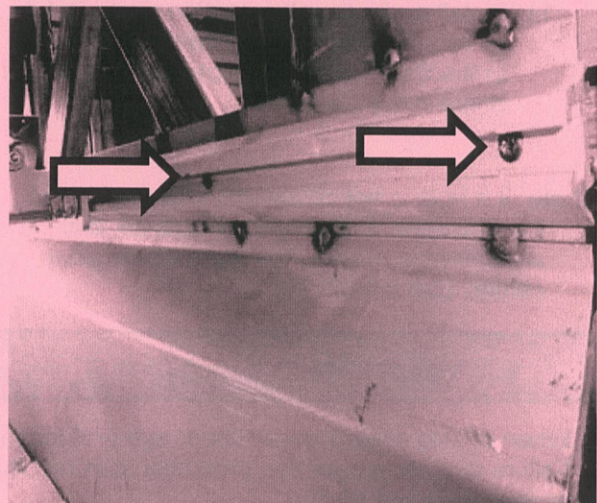
6. Remove the screw (70368856) at the beginning of the seat rail.



7. Remove the rubber molding of the seat rail.
Note: Rubber molding removed will be re-used, try to not damage the molding.

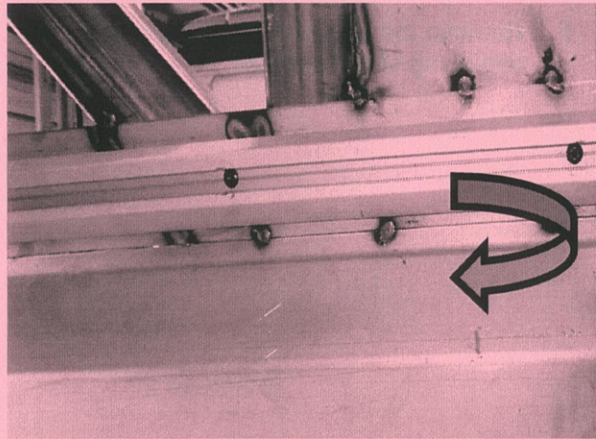


8. Remove all the screws (972186).
Note: Screws must be discarded and replaced by new screws.

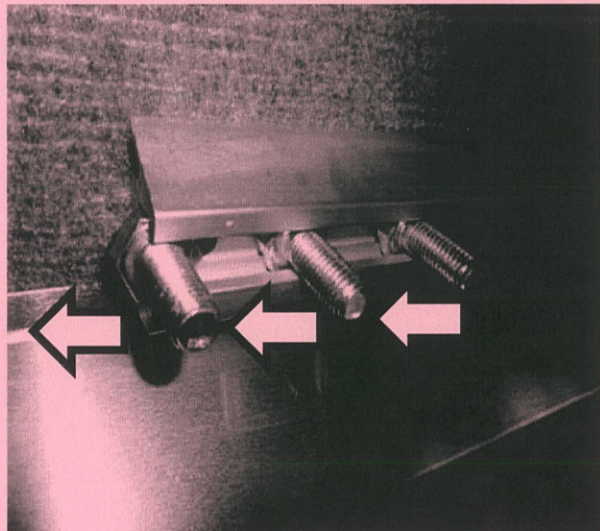


Date	Expiration	Group	No.	Page
09.2012	n/a	8		8(12)

9. Remove the seat rail section (70349139) to replace.

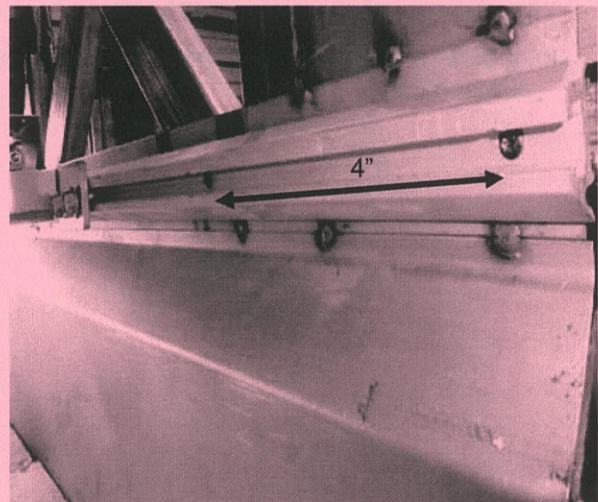


10. Remove the hexagon screws (970947) from the seat rail



11. Install and adjust the section piece, cut it as required in the replaced section. Holes in the Seat rail must be concentric with the holes in the structure.

Note: If a hole is not concentric with the hole in the structure, is damaged or outside, drill another hole moving 1/4" from the original center. Use a 5/32" drill.



WARNING

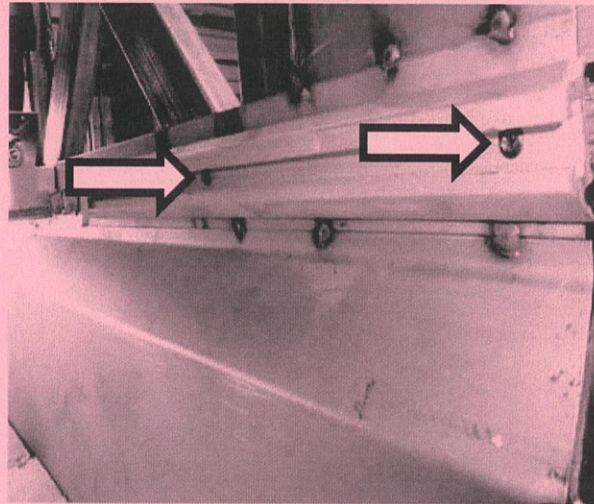
When drilling always wear proper eye protection. Failure to wear proper eye protection can result in serious personal injury.

Date	Expiration	Group	No.	Page
09.2012	n/a	8		9(12)

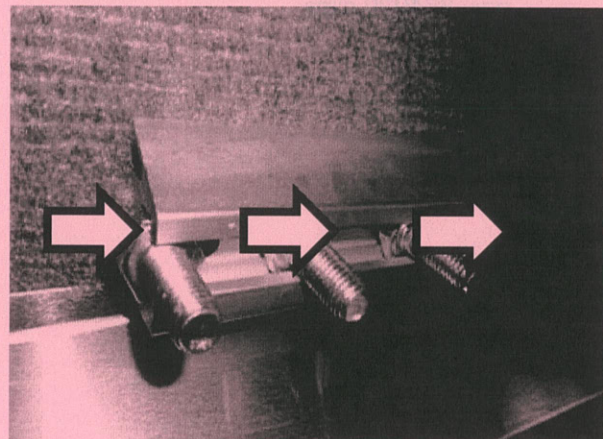
12. Fix the new seat rail to the frame.

Note: Always use new tapping screws (972186).

Note: It is recommended to grease the screws when installing them to allow a proper installation and avoid material corrosion.

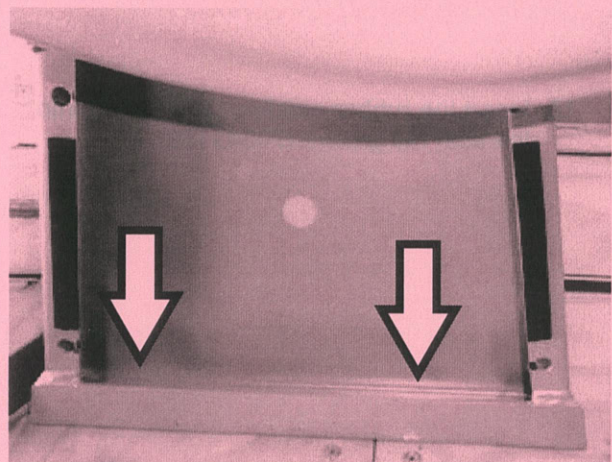


13. Insert the hexagon screws (970974) into the seat rail.



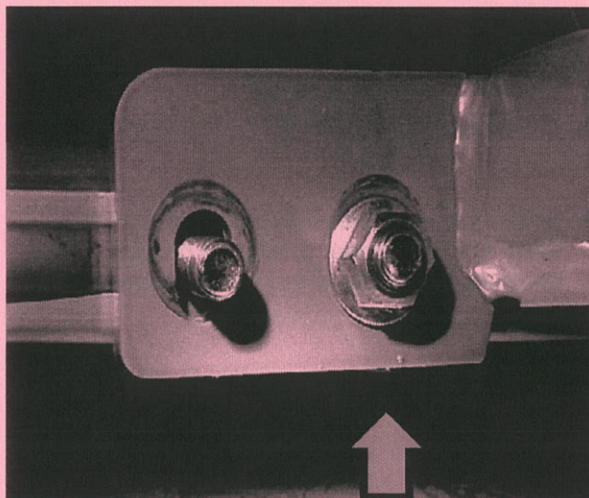
14. Fix the seats to the bus floor with screws (965185).

Note: Use completely new screws and apply a torque of 23 lbf ft.

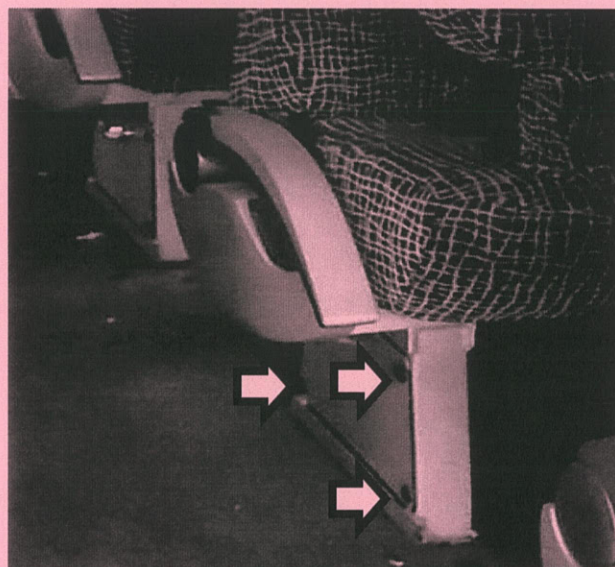


Date	Expiration	Group	No.	Page
09.2012	n/a	8		10(12)

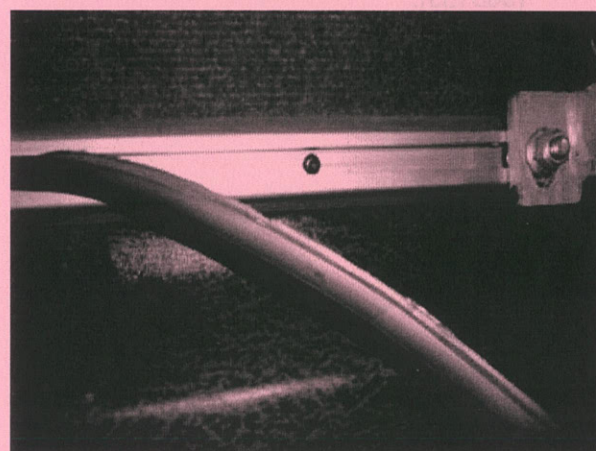
15. Install the seats removed previously and secure them to the rail and the bus floor.



16. Install the seat frame cover and fix it with new 864929 clips

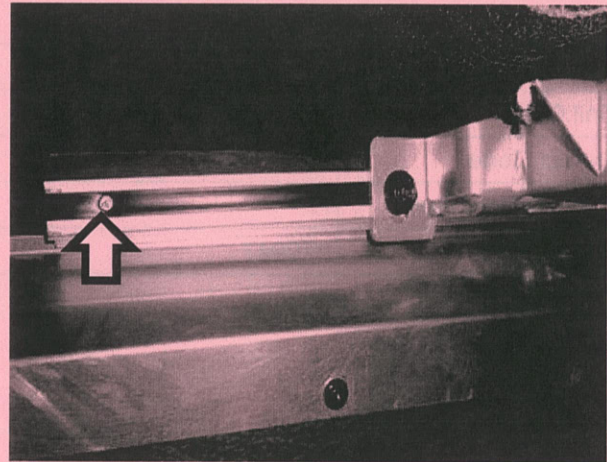


17. Insert the rubber molding (70363411) into the seat rail groove (70349139).

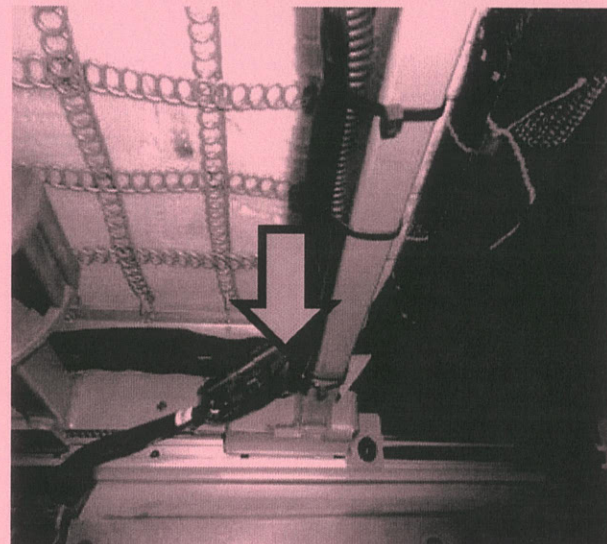


Date	Expiration	Group	No.	Page
09.2012	n/a	8		11(12)

18. Install a screw (70368856) at the beginning of the seat rail in the front section.



19. Connect the harness wiring at the bottom of each seat.



PARTS / WASTE DISPOSAL

Return all replaced parts to Prevest with A.F.A. for full reimbursement.

WARRANTY

This modification is covered by Prevest's normal warranty. The working time required to perform this safety recall is approximately 2.5 hours for part I - inspection.

For part II - repair, we allow blocks of 4.5 hours per rail section up to a maximum of 18 hours for 4 sections.

Return damaged seat track with A.F.A. for reimbursement.

Please contact your Prevest Service Center for additional information and to schedule an appointment at your earliest convenience. Please mention Safety Recall SR12-61.

Safety Recall

SR12-61

Date	Expiration	Group	No.	Page
09.2012	n/a	8		12(12)

OTHER

VBC Bulletin	C8875
Fail Code	18.03-2
Defect Code	09
System Condition	R
Causal Part	970947