



RECALL CAMPAIGN BULLETIN

Reference:

NTB12-010a

Date:

April 12, 2012

VOLUNTARY SAFETY RECALL CAMPAIGN 2012 ALTIMA SEDAN AND VERSA SEDAN SIDE CURTAIN AIR BAG MODULE

<p>This bulletin has been amended to add the Owner's Letter and the NHTSA #. Please discard previous versions.</p>
--

CAMPAIGN ID #: PC 126
NHTSA #: 12V-055
APPLIED VEHICLES: 2012 Altima Sedan (L32)
2012 Versa Sedan (N17)

Check Service COMM to confirm campaign eligibility.

INTRODUCTION

Nissan is conducting a Voluntary Safety Recall Campaign on certain specific Model Year 2012 Altima Sedan and Versa Sedan vehicles to inspect, and if necessary replace, the side curtain air bag modules. This service will be performed at no charge for parts or labor.

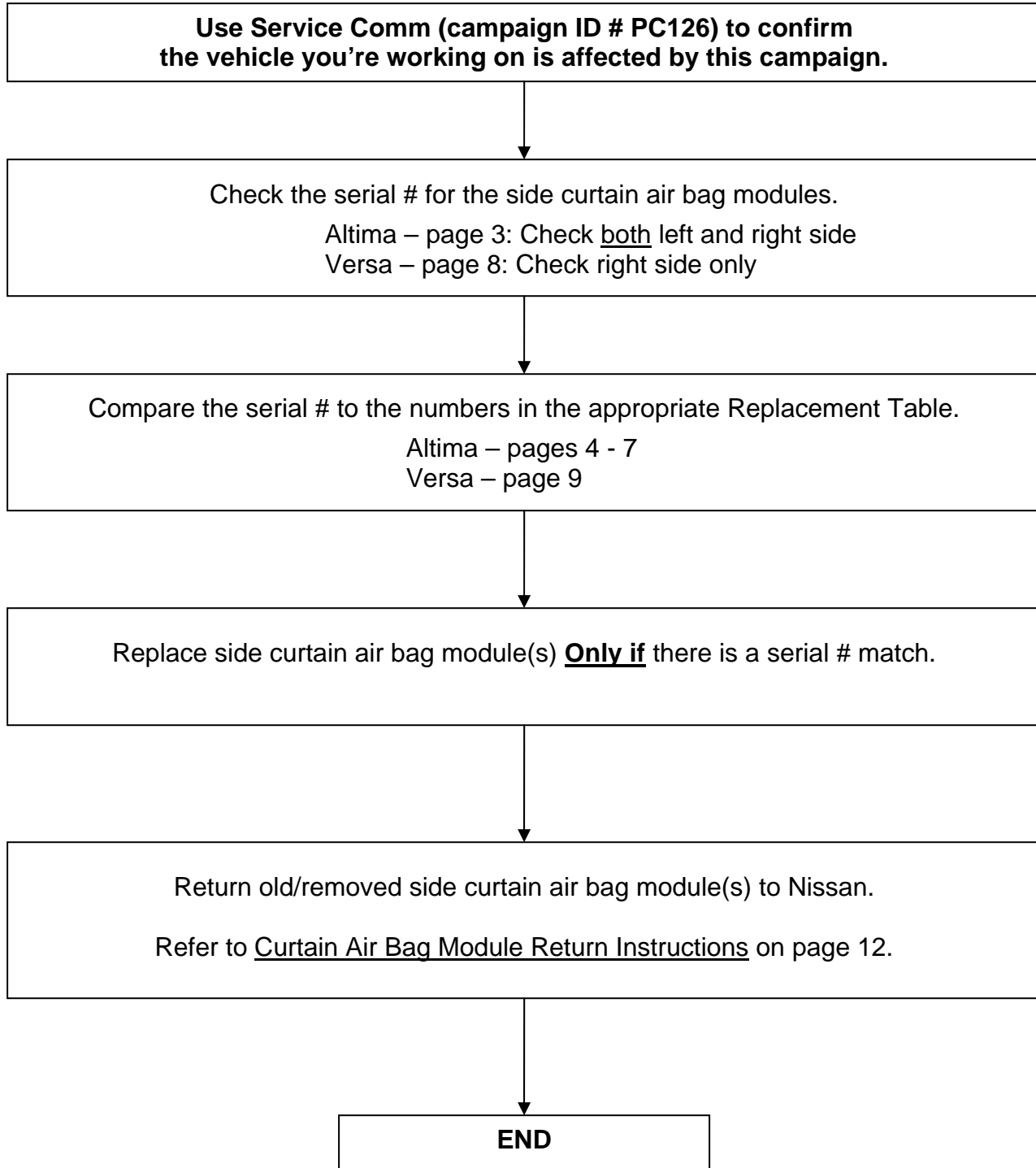
IDENTIFICATION NUMBER

Nissan has assigned identification number PC126 to this campaign. This number must appear on all communications and documentation of any nature dealing with this campaign.

DEALER RESPONSIBILITY

It is the dealer's responsibility to check Service Comm for the campaign status on each vehicle falling within the range of this voluntary safety recall which for any reason enters the service department. This includes vehicles purchased from private parties or presented by transient (tourist) owners and vehicles in a dealer's inventory. **Federal law requires that new vehicles in dealer inventory which are the subject of a safety recall must be corrected prior to sale. Failure to do so can result in civil penalties by the National Highway Traffic Safety Administration.** While federal law applies only to new vehicles, Nissan strongly encourages dealers to correct any used vehicles in their inventory before they are retailed.

REPAIR OVERVIEW



SERVICE PROCEDURE

Altima Serial # Check – left side shown, right side is a mirror image

1. Use a plastic trim tool to snap loose and remove the front sill cover.



Figure 1

2. Locate the sticker with the side curtain air bag module serial #.



Figure 2

3. Write down the serial # and compare it to the numbers in the Replacement Tables on the following pages.

NOTE:

- There may be more than one sticker with a serial number.
- If so, find the one that has NX or NY at the beginning.

4. Make sure to check the serial # for both sides (left and right).

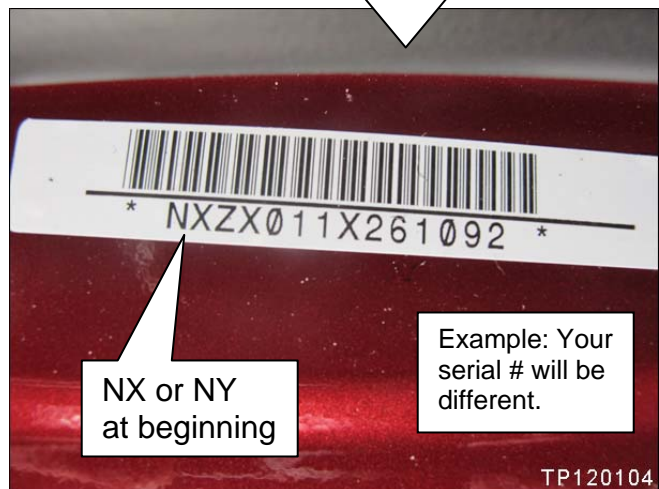


Figure 3

Compare the side curtain air bag module serial number from the vehicle you are working on to the ones in these tables. (LH side table starts on the next page).

Replacement Table – Altima RH

RH Side Curtain Air Bag Module Serial Numbers - Altima				
NXZX011Y023091	NXZX011Y023620	NXZX011Y031218	NXZX011Y031546	NXZX011Y033020
NXZX011Y023094	NXZX011Y023624	NXZX011Y031239	NXZX011Y031553	NXZX011Y033024
NXZX011Y023096	NXZX011Y023625	NXZX011Y031263	NXZX011Y031559	NXZX011Y033027
NXZX011Y023104	NXZX011Y023661	NXZX011Y031266	NXZX011Y031562	NXZX011Y033031
NXZX011Y023106	NXZX011Y023663	NXZX011Y031267	NXZX011Y031565	NXZX011Y033036
NXZX011Y023107	NXZX011Y023665	NXZX011Y031272	NXZX011Y031568	NXZX011Y033040
NXZX011Y023110	NXZX011Y023669	NXZX011Y031279	NXZX011Y031573	NXZX011Y033043
NXZX011Y023113	NXZX011Y023672	NXZX011Y031287	NXZX011Y031577	NXZX011Y033047
NXZX011Y023115	NXZX011Y023675	NXZX011Y031317	NXZX011Y031579	NXZX011Y033050
NXZX011Y023117	NXZX011Y023677	NXZX011Y031320	NXZX011Y031581	NXZX011Y033054
NXZX011Y023150	NXZX011Y023679	NXZX011Y031322	NXZX011Y031583	NXZX011Y033057
NXZX011Y023228	NXZX011Y023682	NXZX011Y031324	NXZX011Y031585	NXZX011Y033061
NXZX011Y023230	NXZX011Y023685	NXZX011Y031325	NXZX011Y031587	NXZX011Y033064
NXZX011Y023241	NXZX011Y023716	NXZX011Y031329	NXZX011Y031589	NXZX011Y033067
NXZX011Y023245	NXZX011Y023722	NXZX011Y031351	NXZX011Y031592	NXZX011Y033071
NXZX011Y023247	NXZX011Y023755	NXZX011Y031353	NXZX011Y031594	NXZX011Y033075
NXZX011Y023248	NXZX011Y031048	NXZX011Y031355	NXZX011Y031598	NXZX011Y033079
NXZX011Y023250	NXZX011Y031049	NXZX011Y031358	NXZX011Y031599	NXZX011Y033081
NXZX011Y023252	NXZX011Y031056	NXZX011Y031362	NXZX011Y031604	NXZX011Y033094
NXZX011Y023253	NXZX011Y031058	NXZX011Y031366	NXZX011Y031615	NXZX011Y033096
NXZX011Y023255	NXZX011Y031061	NXZX011Y031369	NXZX011Y031621	NXZX011Y033195
NXZX011Y023257	NXZX011Y031064	NXZX011Y031371	NXZX011Y031623	NXZX011Y033227
NXZX011Y023266	NXZX011Y031066	NXZX011Y031374	NXZX011Y032327	NXZX011Y033230
NXZX011Y023268	NXZX011Y031068	NXZX011Y031375	NXZX011Y032330	NXZX011Y033234
NXZX011Y023270	NXZX011Y031071	NXZX011Y031379	NXZX011Y032332	NXZX011Y033237
NXZX011Y023271	NXZX011Y031105	NXZX011Y031381	NXZX011Y032335	NXZX011Y033240
NXZX011Y023273	NXZX011Y031107	NXZX011Y031383	NXZX011Y032337	NXZX011Y033244
NXZX011Y023275	NXZX011Y031157	NXZX011Y031386	NXZX011Y032340	NXZX011Y033247
NXZX011Y023277	NXZX011Y031160	NXZX011Y031390	NXZX011Y032343	NXZX011Y033251
NXZX011Y023280	NXZX011Y031163	NXZX011Y031392	NXZX011Y032345	NXZX011Y033258
NXZX011Y023282	NXZX011Y031169	NXZX011Y031394	NXZX011Y032348	NXZX011Y033264
NXZX011Y023534	NXZX011Y031170	NXZX011Y031397	NXZX011Y032350	NXZX011Y033267
NXZX011Y023537	NXZX011Y031173	NXZX011Y031400	NXZX011Y032354	NXZX011Y033277
NXZX011Y023541	NXZX011Y031176	NXZX011Y031405	NXZX011Y032915	NXZX011Y033289
NXZX011Y023544	NXZX011Y031177	NXZX011Y031406	NXZX011Y032918	NXZX011Y033297
NXZX011Y023547	NXZX011Y031180	NXZX011Y031408	NXZX011Y032925	NXZX011Y033298
NXZX011Y023549	NXZX011Y031183	NXZX011Y031412	NXZX011Y032928	NXZX011Y033327
NXZX011Y023551	NXZX011Y031184	NXZX011Y031415	NXZX011Y032939	NXZX011Y033328
NXZX011Y023555	NXZX011Y031186	NXZX011Y031466	NXZX011Y032944	NXZX011Y033330
NXZX011Y023558	NXZX011Y031189	NXZX011Y031470	NXZX011Y032948	NXZX011Y033331
NXZX011Y023560	NXZX011Y031192	NXZX011Y031474	NXZX011Y032952	NXZX011Y033332
NXZX011Y023569	NXZX011Y031195	NXZX011Y031475	NXZX011Y032956	NXZX011Y033333
NXZX011Y023591	NXZX011Y031197	NXZX011Y031477	NXZX011Y032959	NXZX011Y033334
NXZX011Y023594	NXZX011Y031199	NXZX011Y031479	NXZX011Y032966	NXZX011Y033335
NXZX011Y023602	NXZX011Y031202	NXZX011Y031482	NXZX011Y032970	NXZX011Y033336
NXZX011Y023605	NXZX011Y031205	NXZX011Y031486	NXZX011Y032994	NXZX011Y033337
NXZX011Y023609	NXZX011Y031208	NXZX011Y031493	NXZX011Y033000	NXZX011Y033535
NXZX011Y023612	NXZX011Y031210	NXZX011Y031496	NXZX011Y033010	NXZX011Y033561
NXZX011Y023615	NXZX011Y031213	NXZX011Y031506	NXZX011Y033015	NXZX011Y033563
NXZX011Y023618	NXZX011Y031216	NXZX011Y031542	NXZX011Y033017	NXZX011Y033568

Replacement Table – Altima RH continued on the next page.

Replacement Table – Altima RH continued

RH Side Curtain Air Bag Module Serial Numbers – Altima; continued				
NXZX011Y033569	NXZX011Y033647	NXZX011Y070533	NXZX011Y070589	NXZX011Y070645
NXZX011Y033570	NXZX011Y033650	NXZX011Y070536	NXZX011Y070590	NXZX011Y070665
NXZX011Y033571	NXZX011Y033654	NXZX011Y070540	NXZX011Y070591	NXZX011Y070685
NXZX011Y033600	NXZX011Y033667	NXZX011Y070545	NXZX011Y070592	NXZX011Y070686
NXZX011Y033601	NXZX011Y033725	NXZX011Y070549	NXZX011Y070593	NXZX011Y070689
NXZX011Y033602	NXZX011Y033727	NXZX011Y070552	NXZX011Y070595	NXZX011Y070691
NXZX011Y033604	NXZX011Y033728	NXZX011Y070558	NXZX011Y070596	NXZX011Y070696
NXZX011Y033606	NXZX011Y033746	NXZX011Y070562	NXZX011Y070598	NXZX011Y070699
NXZX011Y033607	NXZX011Y070479	NXZX011Y070564	NXZX011Y070599	NXZX011Y070701
NXZX011Y033609	NXZX011Y070481	NXZX011Y070567	NXZX011Y070602	NXZX011Y070703
NXZX011Y033613	NXZX011Y070484	NXZX011Y070570	NXZX011Y070605	NXZX011Y070706
NXZX011Y033616	NXZX011Y070486	NXZX011Y070572	NXZX011Y070608	
NXZX011Y033618	NXZX011Y070489	NXZX011Y070573	NXZX011Y070611	
NXZX011Y033620	NXZX011Y070491	NXZX011Y070575	NXZX011Y070614	
NXZX011Y033623	NXZX011Y070494	NXZX011Y070576	NXZX011Y070616	
NXZX011Y033626	NXZX011Y070496	NXZX011Y070578	NXZX011Y070619	
NXZX011Y033629	NXZX011Y070498	NXZX011Y070579	NXZX011Y070621	
NXZX011Y033632	NXZX011Y070500	NXZX011Y070581	NXZX011Y070623	
NXZX011Y033634	NXZX011Y070508	NXZX011Y070582	NXZX011Y070627	
NXZX011Y033635	NXZX011Y070509	NXZX011Y070583	NXZX011Y070633	
NXZX011Y033640	NXZX011Y070515	NXZX011Y070584	NXZX011Y070636	
NXZX011Y033641	NXZX011Y070528	NXZX011Y070585	NXZX011Y070637	
NXZX011Y033644	NXZX011Y070530	NXZX011Y070587	NXZX011Y070642	

Replacement Table – Altima LH

LH Side Curtain Air Bag Module Serial Numbers - Altima				
NYZX011Y023048	NYZX011Y023312	NYZX011Y023427	NYZX011Y023634	NYZX011Y023717
NYZX011Y023083	NYZX011Y023314	NYZX011Y023430	NYZX011Y023639	NYZX011Y023718
NYZX011Y023088	NYZX011Y023317	NYZX011Y023433	NYZX011Y023643	NYZX011Y023721
NYZX011Y023089	NYZX011Y023380	NYZX011Y023437	NYZX011Y023645	NYZX011Y023724
NYZX011Y023093	NYZX011Y023382	NYZX011Y023457	NYZX011Y023648	NYZX011Y023726
NYZX011Y023095	NYZX011Y023383	NYZX011Y023461	NYZX011Y023653	NYZX011Y023734
NYZX011Y023099	NYZX011Y023386	NYZX011Y023474	NYZX011Y023657	NYZX011Y023739
NYZX011Y023105	NYZX011Y023388	NYZX011Y023476	NYZX011Y023660	NYZX011Y023748
NYZX011Y023122	NYZX011Y023390	NYZX011Y023477	NYZX011Y023664	NYZX011Y023789
NYZX011Y023125	NYZX011Y023392	NYZX011Y023478	NYZX011Y023667	NYZX011Y023792
NYZX011Y023157	NYZX011Y023396	NYZX011Y023479	NYZX011Y023670	NYZX011Y023796
NYZX011Y023233	NYZX011Y023397	NYZX011Y023481	NYZX011Y023673	NYZX011Y023799
NYZX011Y023279	NYZX011Y023400	NYZX011Y023482	NYZX011Y023676	NYZX011Y023824
NYZX011Y023283	NYZX011Y023402	NYZX011Y023486	NYZX011Y023680	NYZX011Y023829
NYZX011Y023288	NYZX011Y023404	NYZX011Y023491	NYZX011Y023689	NYZX011Y023832
NYZX011Y023291	NYZX011Y023410	NYZX011Y023492	NYZX011Y023693	NYZX011Y023838
NYZX011Y023293	NYZX011Y023411	NYZX011Y023496	NYZX011Y023698	NYZX011Y023852
NYZX011Y023295	NYZX011Y023412	NYZX011Y023500	NYZX011Y023700	NYZX011Y023859
NYZX011Y023297	NYZX011Y023413	NYZX011Y023503	NYZX011Y023701	NYZX011Y023869
NYZX011Y023299	NYZX011Y023414	NYZX011Y023506	NYZX011Y023703	NYZX011Y023877
NYZX011Y023301	NYZX011Y023415	NYZX011Y023509	NYZX011Y023705	NYZX011Y023900
NYZX011Y023303	NYZX011Y023417	NYZX011Y023512	NYZX011Y023706	NYZX011Y023906
NYZX011Y023305	NYZX011Y023423	NYZX011Y023515	NYZX011Y023709	NYZX011Y031247
NYZX011Y023307	NYZX011Y023424	NYZX011Y023627	NYZX011Y023710	NYZX011Y031259
NYZX011Y023309	NYZX011Y023425	NYZX011Y023630	NYZX011Y023713	NYZX011Y031261

Replacement Table – Altima LH continued on the next page.

Replacement Table – Altima LH continued

<u>LH</u> Side Curtain Air Bag Module Serial Numbers – Altima; continued				
NYZX011Y031265	NYZX011Y032687	NYZX011Y033139	NYZX011Y033249	NYZX011Y033538
NYZX011Y031269	NYZX011Y032741	NYZX011Y033145	NYZX011Y033252	NYZX011Y033539
NYZX011Y031271	NYZX011Y032748	NYZX011Y033146	NYZX011Y033254	NYZX011Y033541
NYZX011Y031275	NYZX011Y032753	NYZX011Y033149	NYZX011Y033255	NYZX011Y033544
NYZX011Y031277	NYZX011Y032755	NYZX011Y033151	NYZX011Y033260	NYZX011Y033545
NYZX011Y031282	NYZX011Y032759	NYZX011Y033154	NYZX011Y033263	NYZX011Y033546
NYZX011Y031285	NYZX011Y032793	NYZX011Y033156	NYZX011Y033266	NYZX011Y033547
NYZX011Y031288	NYZX011Y032810	NYZX011Y033158	NYZX011Y033270	NYZX011Y033548
NYZX011Y031292	NYZX011Y032853	NYZX011Y033161	NYZX011Y033271	NYZX011Y033549
NYZX011Y031295	NYZX011Y032874	NYZX011Y033163	NYZX011Y033273	NYZX011Y033550
NYZX011Y031316	NYZX011Y032877	NYZX011Y033166	NYZX011Y033274	NYZX011Y033551
NYZX011Y031318	NYZX011Y032900	NYZX011Y033169	NYZX011Y033276	NYZX011Y033552
NYZX011Y031323	NYZX011Y032906	NYZX011Y033171	NYZX011Y033278	NYZX011Y033554
NYZX011Y031326	NYZX011Y032927	NYZX011Y033182	NYZX011Y033281	NYZX011Y033555
NYZX011Y031328	NYZX011Y032940	NYZX011Y033185	NYZX011Y033285	NYZX011Y033556
NYZX011Y031333	NYZX011Y033042	NYZX011Y033187	NYZX011Y033287	NYZX011Y033557
NYZX011Y031337	NYZX011Y033046	NYZX011Y033190	NYZX011Y033299	NYZX011Y033559
NYZX011Y031339	NYZX011Y033056	NYZX011Y033193	NYZX011Y033300	NYZX011Y033572
NYZX011Y031343	NYZX011Y033058	NYZX011Y033196	NYZX011Y033302	NYZX011Y033573
NYZX011Y031354	NYZX011Y033060	NYZX011Y033198	NYZX011Y033303	NYZX011Y033575
NYZX011Y031488	NYZX011Y033070	NYZX011Y033200	NYZX011Y033304	NYZX011Y033576
NYZX011Y031491	NYZX011Y033072	NYZX011Y033203	NYZX011Y033305	NYZX011Y033577
NYZX011Y031494	NYZX011Y033077	NYZX011Y033206	NYZX011Y033307	NYZX011Y033579
NYZX011Y031498	NYZX011Y033078	NYZX011Y033207	NYZX011Y033310	NYZX011Y033580
NYZX011Y031501	NYZX011Y033080	NYZX011Y033209	NYZX011Y033313	NYZX011Y033581
NYZX011Y031504	NYZX011Y033082	NYZX011Y033210	NYZX011Y033315	NYZX011Y033583
NYZX011Y031508	NYZX011Y033086	NYZX011Y033212	NYZX011Y033321	NYZX011Y033584
NYZX011Y031511	NYZX011Y033089	NYZX011Y033213	NYZX011Y033322	NYZX011Y033585
NYZX011Y031514	NYZX011Y033090	NYZX011Y033216	NYZX011Y033324	NYZX011Y033586
NYZX011Y031516	NYZX011Y033092	NYZX011Y033217	NYZX011Y033342	NYZX011Y033587
NYZX011Y031518	NYZX011Y033093	NYZX011Y033219	NYZX011Y033348	NYZX011Y033589
NYZX011Y031528	NYZX011Y033095	NYZX011Y033220	NYZX011Y033351	NYZX011Y033590
NYZX011Y031555	NYZX011Y033097	NYZX011Y033221	NYZX011Y033356	NYZX011Y033591
NYZX011Y031584	NYZX011Y033100	NYZX011Y033222	NYZX011Y033364	NYZX011Y033593
NYZX011Y031663	NYZX011Y033101	NYZX011Y033223	NYZX011Y033367	NYZX011Y033595
NYZX011Y032328	NYZX011Y033103	NYZX011Y033225	NYZX011Y033378	NYZX011Y033596
NYZX011Y032347	NYZX011Y033104	NYZX011Y033226	NYZX011Y033382	NYZX011Y033598
NYZX011Y032352	NYZX011Y033107	NYZX011Y033228	NYZX011Y033386	NYZX011Y033603
NYZX011Y032355	NYZX011Y033108	NYZX011Y033229	NYZX011Y033388	NYZX011Y033610
NYZX011Y032358	NYZX011Y033110	NYZX011Y033231	NYZX011Y033391	NYZX011Y033612
NYZX011Y032361	NYZX011Y033111	NYZX011Y033232	NYZX011Y033402	NYZX011Y033615
NYZX011Y032364	NYZX011Y033114	NYZX011Y033233	NYZX011Y033404	NYZX011Y033619
NYZX011Y032366	NYZX011Y033117	NYZX011Y033235	NYZX011Y033411	NYZX011Y033622
NYZX011Y032370	NYZX011Y033120	NYZX011Y033236	NYZX011Y033431	NYZX011Y033625
NYZX011Y032372	NYZX011Y033122	NYZX011Y033238	NYZX011Y033436	NYZX011Y033628
NYZX011Y032377	NYZX011Y033128	NYZX011Y033239	NYZX011Y033439	NYZX011Y033631
NYZX011Y032379	NYZX011Y033130	NYZX011Y033241	NYZX011Y033443	NYZX011Y033636
NYZX011Y032380	NYZX011Y033134	NYZX011Y033242	NYZX011Y033517	NYZX011Y033639
NYZX011Y032678	NYZX011Y033136	NYZX011Y033245	NYZX011Y033522	NYZX011Y033643
NYZX011Y032681	NYZX011Y033137	NYZX011Y033248	NYZX011Y033537	NYZX011Y033646

Replacement Table – Altima LH continued on the next page.

Replacement Table – Altima LH continued

LH Side Curtain Air Bag Module Serial Numbers – Altima; continued				
NYZX011Y033648	NYZX011Y033679	NYZX011Y033778	NYZX011Y070406	NYZX011Y070524
NYZX011Y033649	NYZX011Y033682	NYZX011Y033829	NYZX011Y070409	NYZX011Y070526
NYZX011Y033652	NYZX011Y033685	NYZX011Y033908	NYZX011Y070412	NYZX011Y070532
NYZX011Y033656	NYZX011Y033686	NYZX011Y033916	NYZX011Y070416	NYZX011Y070535
NYZX011Y033661	NYZX011Y033689	NYZX011Y033922	NYZX011Y070419	NYZX011Y070538
NYZX011Y033663	NYZX011Y033696	NYZX011Y033928	NYZX011Y070426	NYZX011Y070550
NYZX011Y033664	NYZX011Y033767	NYZX011Y033931	NYZX011Y070428	NYZX011Y070553
NYZX011Y033668	NYZX011Y033768	NYZX011Y033935	NYZX011Y070434	NYZX011Y070557
NYZX011Y033671	NYZX011Y033769	NYZX011Y070299	NYZX011Y070437	NYZX011Y070588
NYZX011Y033675	NYZX011Y033772	NYZX011Y070316	NYZX011Y070440	NYZX011Y070594
NYZX011Y033677	NYZX011Y033776	NYZX011Y070403	NYZX011Y070510	NYZX011Y070684

If you find a serial # match – replace that curtain air bag module.

NOTE: Replace only side curtain air bag modules with a serial # that matches one in the replacement tables.

Refer to the appropriate Service Manual, section SR, for side curtain air bag module replacement information.

IMPORTANT: Follow all cautions, warnings, and notes in the Service Manual when working on or near a Supplemental Restraint System (SRS).

Carefully open the box when removing new side curtain air bag modules.

- The original box for the new side curtain air bag module is needed to ship the old module back to NNA.
- The box must be in “Like New” condition for return shipment.
- Any damage to the box will make it unusable.

Return the old/removed side curtain air bags to Nissan.

- Refer to Curtain Air Bag Module Return Instructions on page 12.

Versa Serial # Check – right side only

1. Partially remove the door seal from the rear door:
2. Snap loose and remove the rear pillar finisher.
 - Finisher is held on with 4 clips.
 - Approximate location of the clips (●) is shown in Figure 4.
 - Use a plastic trim tool as needed.

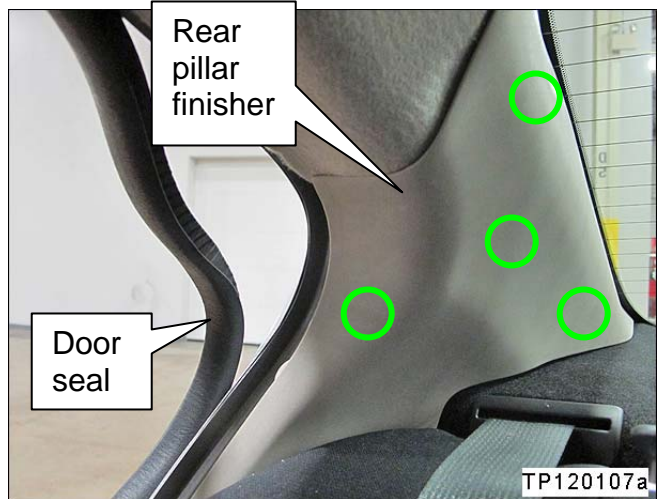


Figure 4

3. Locate the serial # on side curtain air bag module.

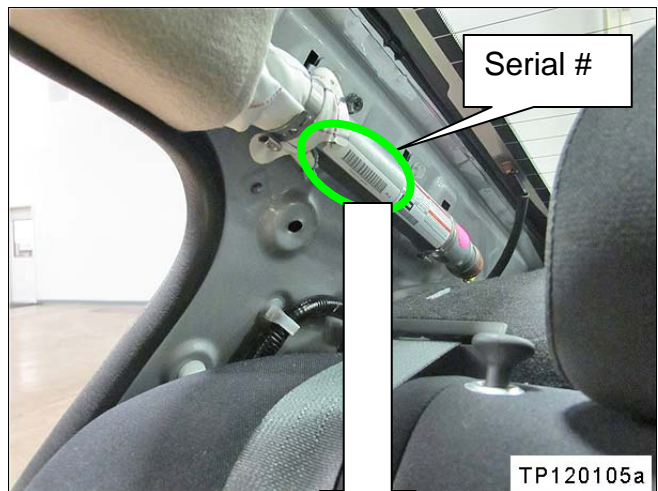


Figure 5

4. Write down the serial number and compare it to the numbers in the Replacement Table on the next page.

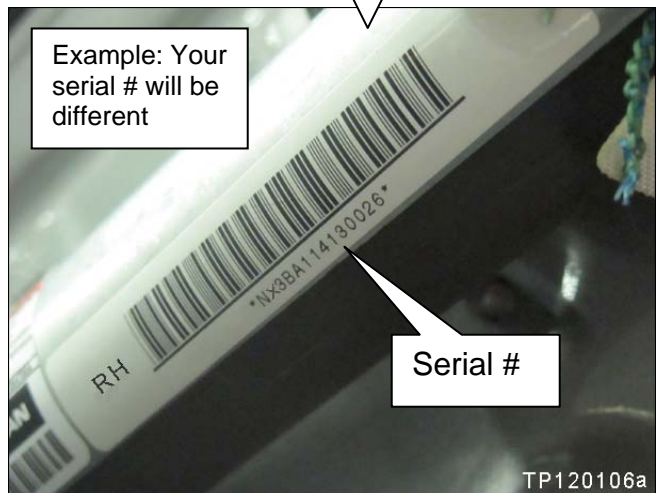


Figure 6

Compare the side curtain air bag module serial number from the vehicle you are working on to the ones in this table.

Replacement Table – Versa RH

RH Side Curtain Air Bag Module Serial Numbers - Versa				
NX3BA11Y230303	NX3BA11Y230344	NX3BA11Y230397	NX3BA11Y230485	NX3BA11Y230551
NX3BA11Y230304	NX3BA11Y230345	NX3BA11Y230398	NX3BA11Y230486	NX3BA11Y230552
NX3BA11Y230305	NX3BA11Y230346	NX3BA11Y230399	NX3BA11Y230487	NX3BA11Y230553
NX3BA11Y230306	NX3BA11Y230347	NX3BA11Y230400	NX3BA11Y230488	NX3BA11Y230554
NX3BA11Y230307	NX3BA11Y230348	NX3BA11Y230401	NX3BA11Y230489	NX3BA11Y230555
NX3BA11Y230308	NX3BA11Y230349	NX3BA11Y230402	NX3BA11Y230490	NX3BA11Y230557
NX3BA11Y230309	NX3BA11Y230350	NX3BA11Y230403	NX3BA11Y230491	NX3BA11Y230575
NX3BA11Y230310	NX3BA11Y230362	NX3BA11Y230404	NX3BA11Y230493	NX3BA11Y300389
NX3BA11Y230311	NX3BA11Y230363	NX3BA11Y230405	NX3BA11Y230494	NX3BA11Y300390
NX3BA11Y230312	NX3BA11Y230364	NX3BA11Y230406	NX3BA11Y230495	NX3BA11Y300391
NX3BA11Y230313	NX3BA11Y230366	NX3BA11Y230407	NX3BA11Y230496	NX3BA11Y300392
NX3BA11Y230314	NX3BA11Y230367	NX3BA11Y230408	NX3BA11Y230497	NX3BA11Y300393
NX3BA11Y230315	NX3BA11Y230368	NX3BA11Y230409	NX3BA11Y230498	NX3BA11Y300394
NX3BA11Y230316	NX3BA11Y230369	NX3BA11Y230410	NX3BA11Y230499	NX3BA11Y300395
NX3BA11Y230317	NX3BA11Y230370	NX3BA11Y230411	NX3BA11Y230500	NX3BA11Y300396
NX3BA11Y230318	NX3BA11Y230371	NX3BA11Y230412	NX3BA11Y230501	NX3BA11Y300397
NX3BA11Y230319	NX3BA11Y230372	NX3BA11Y230413	NX3BA11Y230502	NX3BA11Y300398
NX3BA11Y230320	NX3BA11Y230373	NX3BA11Y230414	NX3BA11Y230503	NX3BA11Y300399
NX3BA11Y230321	NX3BA11Y230374	NX3BA11Y230415	NX3BA11Y230504	NX3BA11Y300402
NX3BA11Y230322	NX3BA11Y230375	NX3BA11Y230416	NX3BA11Y230505	NX3BA11Y300460
NX3BA11Y230323	NX3BA11Y230376	NX3BA11Y230417	NX3BA11Y230506	NX3BA11Y300461
NX3BA11Y230324	NX3BA11Y230377	NX3BA11Y230418	NX3BA11Y230507	NX3BA11Y300463
NX3BA11Y230325	NX3BA11Y230378	NX3BA11Y230419	NX3BA11Y230508	NX3BA11Y300464
NX3BA11Y230326	NX3BA11Y230379	NX3BA11Y230420	NX3BA11Y230509	NX3BA11Y300466
NX3BA11Y230327	NX3BA11Y230380	NX3BA11Y230421	NX3BA11Y230522	NX3BA11Y300467
NX3BA11Y230328	NX3BA11Y230381	NX3BA11Y230422	NX3BA11Y230523	NX3BA11Y300475
NX3BA11Y230329	NX3BA11Y230382	NX3BA11Y230436	NX3BA11Y230524	NX3BA11Y300476
NX3BA11Y230330	NX3BA11Y230383	NX3BA11Y230438	NX3BA11Y230525	NX3BA11Y300477
NX3BA11Y230331	NX3BA11Y230384	NX3BA11Y230439	NX3BA11Y230526	NX3BA11Y300478
NX3BA11Y230332	NX3BA11Y230385	NX3BA11Y230473	NX3BA11Y230527	NX3BA11Y300479
NX3BA11Y230333	NX3BA11Y230386	NX3BA11Y230474	NX3BA11Y230528	NX3BA11Y300481
NX3BA11Y230334	NX3BA11Y230387	NX3BA11Y230475	NX3BA11Y230529	NX3BA11Y300482
NX3BA11Y230335	NX3BA11Y230388	NX3BA11Y230476	NX3BA11Y230530	NX3BA11Y300483
NX3BA11Y230336	NX3BA11Y230389	NX3BA11Y230477	NX3BA11Y230531	NX3BA11Y300484
NX3BA11Y230337	NX3BA11Y230390	NX3BA11Y230478	NX3BA11Y230532	NX3BA11Y300485
NX3BA11Y230338	NX3BA11Y230391	NX3BA11Y230479	NX3BA11Y230533	NX3BA11Y300486
NX3BA11Y230339	NX3BA11Y230392	NX3BA11Y230480	NX3BA11Y230546	NX3BA11Y300489
NX3BA11Y230340	NX3BA11Y230393	NX3BA11Y230481	NX3BA11Y230547	
NX3BA11Y230341	NX3BA11Y230394	NX3BA11Y230482	NX3BA11Y230548	
NX3BA11Y230342	NX3BA11Y230395	NX3BA11Y230483	NX3BA11Y230549	
NX3BA11Y230343	NX3BA11Y230396	NX3BA11Y230484	NX3BA11Y230550	

If you find a serial # match – replace the side curtain air bag module.

NOTE: Replace only side curtain air bag modules that have a serial # that matches one in the Replacement Table.

Refer to the appropriate Service Manual, section SR, for side curtain air bag module replacement information.

IMPORTANT: Follow all cautions, warnings, and notes in the Service Manual when working on or near a Supplemental Restraint System (SRS).

Carefully open the box when removing new side curtain air bag modules.

- The original box for the new side curtain air bag module is needed to ship the old module back to NNA.
- The box must be in “Like New” condition for return shipment.
- Any damage to the box will make it unusable.

Return the old/removed side curtain air bags to Nissan.

- Refer to Curtain Air Bag Module Return Instructions on page 12.

PARTS INFORMATION

DESCRIPTION	MODEL	PART NUMBER	QTY
Side Curtain Air Bag Module – RH	Altima	985P0 – ZX08A	1; if needed
Side Curtain Air Bag Module - LH	Altima	985P1 – ZX08A	1; if needed
Side Curtain Air Bag Module – RH	Versa	985P0 – 3BA5A	1; if needed

CLAIMS INFORMATION

Submit a Campaign (CM) line claim using the following claims coding:

Altima and Versa

CAMPAIGN (CM) I.D. #	DESCRIPTION	OP CODE	FRT
PC126	Check Serial # for Side Curtain Air Bag Module(s) - OK	PC1260	0.3 hrs

Altima

CAMPAIGN (CM) I.D. #	DESCRIPTION	OP CODE	FRT
PC126	Check Serial # for Both Side Curtain Air Bag Modules and Replace One Side	PC1261	1.9 hrs

Altima

CAMPAIGN (CM) I.D. #	DESCRIPTION	OP CODE	FRT
PC126	Check Serial # for Both Side Curtain Air Bag Modules and Replace Both Sides	PC1262	2.2 hrs

Versa

CAMPAIGN (CM) I.D. #	DESCRIPTION	OP CODE	FRT
PC126	Check Serial # for RH side Curtain Air Bag Module and Replace	PC1263	1.4 hrs

Curtain Air Bag Module Return Instructions

NOTE: DO NOT DEPLOY THE USED/NON-DEPLOYED AIRBAG MODULE REMOVED FROM THE VEHICLE.

Returns via YRC Reverse Logistics (for non DDS dealers)

Packaging Instructions

1. Place the used/non-deployed air bag module from the vehicle in the carton that the new air bag module was received in. Be sure to include any packing material that was used to ship the new module in the carton with the used module.

NOTE: Carton must be in like new condition. If a replacement carton is needed, contact your Dealer Parts Information Center (DPIC).

2. Seal the carton with 2" clear tape across the entire top flap and along the top edges to securely close the carton.
3. Verify that the Class 9 hazardous material labels are still clearly visible on the carton and the proper shipping name: UN3268, air bag modules, 9, III
4. Write on top of the carton: "Altima / Versa Campaign".

Shipping Instructions

NOTE: Please accumulate a minimum of 10-15 air bag modules prior to contacting the YRC Reverse Logistics call center to arrange for the pick up of the modules.

1. Call the YRC Reverse Logistics call center at 1-800-357-9199 and tell the operator that you need to return Altima / Versa air bag modules to your servicing PDC.
2. Provide the call center with the name, address and telephone of your servicing PDC.
3. Provide your dealership name, address and telephone number.
4. Provide the number of air bag modules being returned and the total weight.
5. The YRC Reverse Logistics team will fax/email you a copy of the completed Bill of Lading and shipping labels for the shipment.
6. The YRC Reverse Logistics call center will notify the local YRC terminal to pick up the air bag modules at your dealership.
 - Please do **NOT** call the local YRC terminal to schedule the pick up.
7. Place the packaged air bag modules and completed Bill of Lading aside for pick up by the carrier.

Returns via DDS

Packing Instructions:

1. Place the used/non-deployed air bag module from the vehicle in the carton that the new air bag module was received in. Be sure to include any packing material that was used to ship the new module in the carton with the used module.

NOTE: Carton must be in like new condition. If a replacement carton is needed, contact your Dealer Parts Information Center (DPIC).

2. Seal the carton with 2" clear tape across the entire top flap and along the top edges to securely close the carton.
3. Verify that the Class 9 hazardous material labels are still clearly visible on the carton and the proper shipping name: UN3268, air bag modules, 9, III
4. Write on top of the carton "Altima / Versa Campaign".

Bill of Lading Instructions (refer to example on page 14):

Use the blank Bill of Lading on page 15 and enter the following:

1. Servicing PDC name, address & telephone number.
2. Date of the shipment.
3. Dealership name and address as indicated on the sample Bill of Lading.
4. Number of packages being shipped on line 1.
5. Total weight of the packages being shipped on line 1.
6. Total number of packages being shipped.
7. Total weight of the packages being shipped.
8. Print the name of the trained/certified employee (Parts Manager or designee) and sign as shown on sample Bill of Lading.
9. Print the name of the DDS carrier that will be transporting the air bag modules back to your servicing PDC.

Shipping Instructions:

Place the packaged air bag cartons and completed Bill of Lading in DDS delivery area for DDS driver pick up.

SHIPPER PLEASE NOTE ▶	FREIGHT CHARGES ARE PREPAID ON THIS BILL OF LADING UNLESS MARKED COLLECT	CARRIER PLEASE NOTE ▶	IF SINGLE SHIPMENT CHECK BOX BELOW
PLACE PRO LABEL HERE		STRAIGHT BILL OF LADING ORIGINAL - NOT NEGOTIABLE SINGLE SHIPMENT PICKUP <input checked="" type="checkbox"/>	
		DATE 2	SHIPPER NO.
CONSIGNEE (TO) Servicing PDC Name		SHIPPER (FROM) Dealer Name	
STREET Servicing PDC Street Address		STREET Dealer Street Address	
CITY, STATE, ZIP Servicing PDC City, State and Zip		CITY, STATE, ZIP Dealer City, State and Zip	
PHONE NO. Servicing PDC Tel. No.	ROUTE	VEHICLE NO.	
4	X	4G BOXES X 9.0 LBS	19697
		UN3268, AIR BAG MODULES, 9, III	55
		EX-1993040309	5
		NO PLACARDS REQUIRED PER 49CFR 172.504(F)(9)	
		2008 ERG 171	
6		◀ TOTAL	TOTAL ▶
7			
EMERGENCY CONTACT: CHEMTREC 1-800-424-9300/1-703-527-3887			
THIS IS TO CERTIFY THAT THE ABOVE NAMED MATERIALS ARE PROPERLY CLASSIFIED, DESCRIBED, PACKAGED, MARKED AND LABELED AND ARE IN PROPER CONDITION FOR TRANSPORT ACCORDING TO THE APPLICABLE REGULATIONS OF THE DEPARTMENT OF TRANSPORTATION.			
SHIPPER Parts Manager Name		CARRIER DDS Carrier Name	
AUTHORIZED SIGNATURE Parts Manager Signature		AUTHORIZED SIGNATURE Carrier Driver Signature	
8		9	
		DATE 04/12/12	

NUMBER OF PIECES RECEIVED ▲

SHIPPER PLEASE NOTE ▶	FREIGHT CHARGES ARE PREPAID ON THIS BILL OF LADING UNLESS MARKED COLLECT	CARRIER PLEASE NOTE ▶	IF SINGLE SHIPMENT CHECK BOX BELOW		
PLACE PRO LABEL HERE		STRAIGHT BILL OF LADING			
		ORIGINAL - NOT NEGOTIABLE SINGLE SHIPMENT PICKUP <input checked="" type="checkbox"/>			
		DATE	P.O. NO.	SHIPPER NO.	
CONSIGNEE (TO)		SHIPPER (FROM)			
STREET		STREET			
CITY, STATE, ZIP		CITY, STATE, ZIP			
PHONE NO.	ROUTE	VEHICLE NO.			
NUMBER SHIPPING UNITS	H M	KIND OF PACKAGING, DESCRIPTION OF ARTICLES, SPECIAL MARKS AND EXCEPTIONS	NMFC No.	CLASS	WEIGHT (LBS) (Subject to Correction)
◀ TOTAL		TOTAL ▶			
THIS IS TO CERTIFY THAT THE ABOVE NAMED MATERIALS ARE PROPERLY CLASSIFIED, DESCRIBED, PACKAGED, MARKED AND LABELED AND ARE IN PROPER CONDITION FOR TRANSPORT ACCORDING TO THE APPLICABLE REGULATIONS OF THE DEPARTMENT OF TRANSPORTATION.					
SHIPPER			CARRIER		
AUTHORIZED SIGNATURE			AUTHORIZED SIGNATURE		DATE

NUMBER OF PIECES RECEIVED ▲

OWNER'S LETTER (example of typical owner's letter)

Dear Nissan Altima Owner:

This notice is sent to you in accordance with the requirements of the National Traffic and Motor Vehicle Safety Act. Nissan has decided that a defect which relates to motor vehicle safety exists in 2012 Model year Nissan Altima vehicles. Our records indicate that you own or lease the Nissan vehicle identified by the VIN on the inside of this notice.

Reason for Recall

Nissan recently discovered that one or both side curtain air bag inflators in your vehicle may have been manufactured out of specification by the supplier. An incorrect grade of propellant was used in the curtain inflator during production. This condition could affect side curtain air bag performance in your vehicle. The curtain air bag inflators may not deploy properly in the event of a side impact crash, which could increase the risk of injury.

What Nissan Will Do

Your Nissan dealer will inspect the inflators and, if needed, replace one or both side curtain airbag module assemblies free of charge. This free service should take about two hours to complete, but your Nissan dealer may require your vehicle for a longer period of time based upon their work schedule.

What You Should Do

Contact your Nissan dealer at your earliest convenience in order to arrange an appointment to have your vehicle repaired. Please bring this notice with you when you keep your service appointment. Instructions have been sent to your Nissan dealer.

If the dealer fails to, or is unable to make the necessary repairs free of charge, you may contact the National Consumer Affairs Department, Nissan North America, Inc. P.O. Box 685003, Franklin, TN 37068-5003. The toll free number is 1-800-NISSAN1 (1-800-647-7261). You may also submit a complaint to the Administrator, National Highway Traffic Safety Administration, 1200 New Jersey Avenue, SE., Washington, DC 20590; or call the toll-free Vehicle Safety Hotline at 1-888-327-4236 (TTY: 1-800-424-9153); or go to <http://www.safercar.gov>.

Federal law requires that any vehicle lessor receiving this recall notice must forward a copy of this notice to the lessee within ten days.

Thank you for your cooperation. We are indeed sorry for any inconvenience this may cause you.