



## INSTRUCTIONS TO PERFORM CAMPAIGN 125

---

### Models Affected:

- 2012 model year Winnebago Access®/Access Premier® and Itasca Impulse®/Impulse Silver® motor homes (Models 231R/231RP).

These motor homes were manufactured from June 28, 2011 through January 25, 2012.

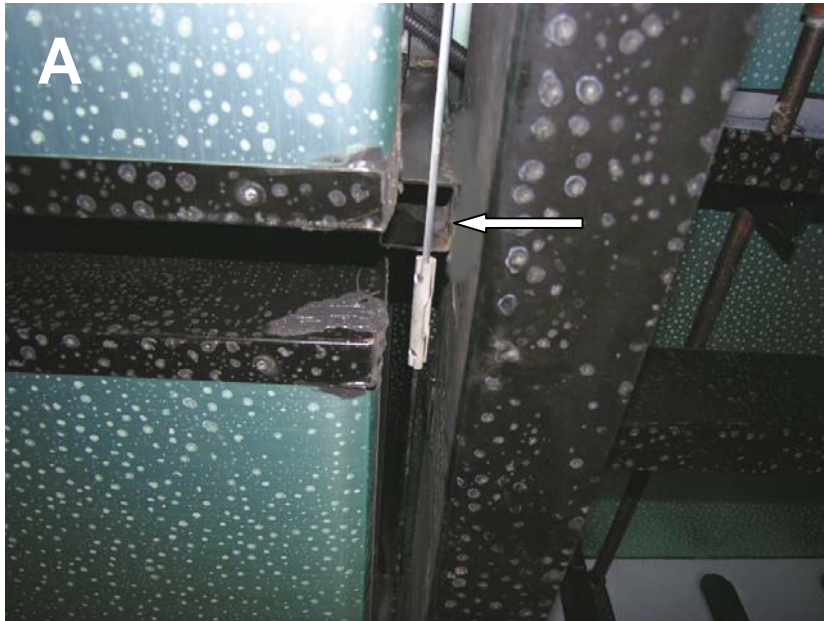
### Equipment Required:

- Hoist or Floor Jack
- Industrial Saw (e.g. Sawzall®)
- Pry Bar
- Channel Lock (Large)
- 2½" Right-Angle Pad Grinder (or equivalent)
- Clamp
- Black Spray Paint

### Procedure:

Cut and bend back sections of metal tube beneath the vehicle to allow clearance for the parking brake cable.

1. Raise vehicle using a hoist or floor jack.
2. Locate parking brake cable and metal tube beneath the vehicle (between first and second driver side compartments). See Photo A.



3. Using a clamp, move parking brake cable out of the way to perform the following steps, by attaching the cable to steel frame beneath the vehicle. See Photo B.



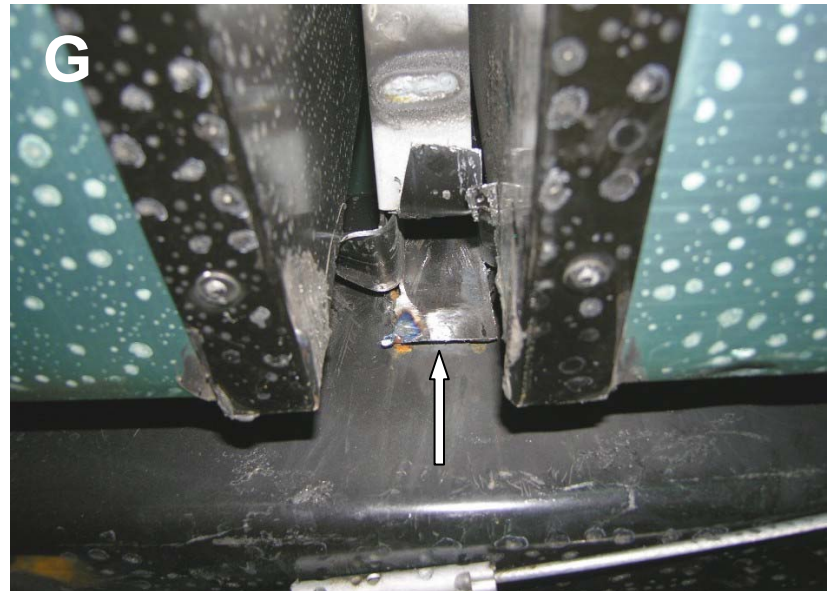
4. Using an industrial saw, make four cuts, one on each corner of the metal tube. See Photos C and D.



- Using a pry bar and large channel lock, bend front and sides of metal tube outward. See Photo E.



- Using a 2½” right-angle pad grinder (or equivalent), grind down rough edges on the metal tube. See Photos F and G.



- Apply black spray paint to section of the metal tube that was ground out.
- Remove clamp from steel frame beneath the vehicle.

- Engage/disengage the parking brake, ensuring there is no interference (a minimum clearance of  $\frac{1}{2}$ " ) between the parking brake cable and metal tube. See Photo H.



- Lower vehicle to the ground.