

MAILED POSTED ON ISIS

APR 27 2012

APR 23 2012

Compliance Dept. Compliance Dept.

# **SERVICE PROCEDURE**

G-12501  
APRIL 2012

**SUBJECT: SAFETY RECALL**

The brake line P-clip on certain 3200 IM and HC bus models built 08/16/2004 thru 05/13/2010 with an integrated mobility unit.

**DEFECT DESCRIPTION**

If the rear brake line is not oriented properly during brake service or maintenance, and the bus kneeling feature is activated, it is possible for the brake line P-clip to become pinched, which may result in the rear brakes to not fully release and drag. Brakes that do not fully release or drag could potentially overheat and may result in a wheel-end fire. A wheel-end fire may cause property damage, personal injury, or death.

**MODELS INVOLVED**

This Safety Recall involves certain 3200 IM and HC bus models built 08/16/2004 thru 05/13/2010 with feature code 10NPU (integrated mobility package) or feature code 10NPZ (LG).

**PARTS INFORMATION**

Part Number	Part Description	Quantity
Not Applicable	7/16 in. Flat Washers (source locally)	4

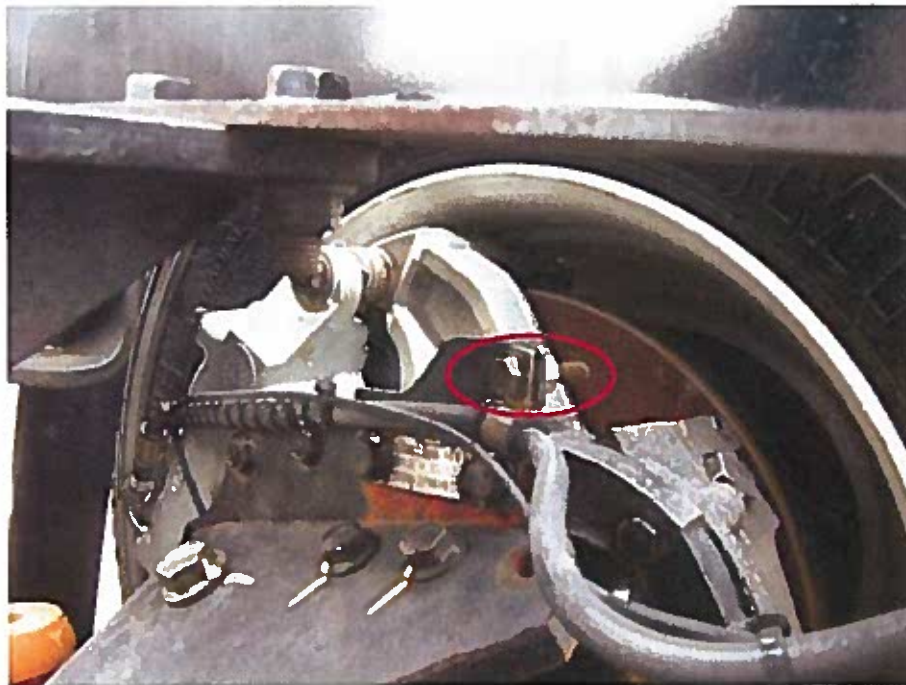
**SERVICE PROCEDURE**

**WARNING!** PARK VEHICLE ON HARD FLAT SURFACE, TURN THE ENGINE OFF, SET THE PARKING BRAKE, AND BLOCK THE WHEELS TO PREVENT THE VEHICLE FROM MOVING IN BOTH DIRECTIONS. FAILURE TO DO SO MAY RESULT IN PROPERTY DAMAGE, PERSONAL INJURY, AND/OR DEATH.

**WARNING!** IF THE VEHICLE MUST BE RAISED, DO NOT WORK UNDER THE VEHICLE SUPPORTED ONLY BY JACKS. JACKS CAN SLIP OR FALL OVER, POTENTIALLY RESULTING IN PROPERTY DAMAGE, PERSONAL INJURY AND/OR DEATH.

**WARNING!** ALWAYS WEAR SAFE EYE PROTECTION WHEN PERFORMING VEHICLE MAINTENANCE. FAILURE TO DO SO MAY RESULT IN SERIOUS EYE INJURY.

1. Place the unit on an appropriate lift to allow access to the rear wheel-end housing area.
2. Starting with the right-rear wheel-end housing, remove the brake line P-clip from the support bracket and discard only the mounting bolt and nut. Save the P-clip for reuse. Refer to Figure 1.



**Figure 1**

3. Remove and retain the two rear wheel-end housing brake line support bracket mounting bolts. Refer to Figure 2.

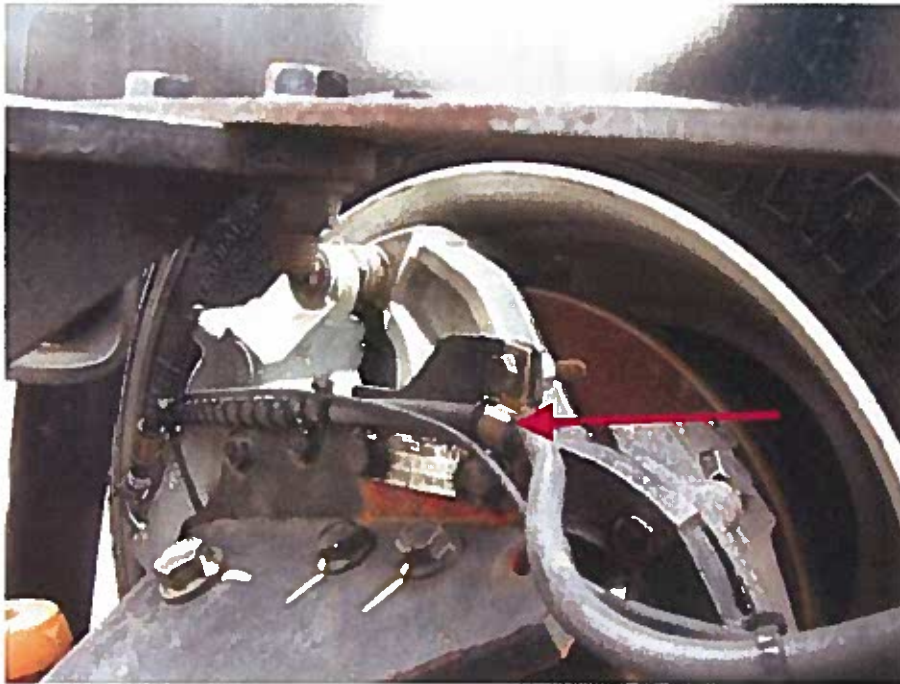
**NOTE:** If an information tag is present, please retain for installation during step 8.



**Figure 2**

4. Discard the brake line support bracket.
5. Remove the brake line P-clip from the brake line.

**NOTE: The P-clip grommet is to remain on the brake line. Refer to Figure 3.**



**Figure 3**

6. Securely clamp the mounting tabs of the P-clip together with a needle-nose vise grip and make sure the mounting hole of each tab is aligned. Secure the P-clip in a vise and use a drill and a 7/16 in. drill bit to enlarge the mounting hole from the original size to 7/16 in. Make sure the drill bit is centered in the mounting hole to maximize the remaining edge distance. Refer to Figure 4.



**Figure 4**

7. Reinstall the P-clip on the brake line and position the grommet and P-clip with the mounting hole in line with the rear-most wheel end-housing bolt nearest the caliper previously removed in step 3.
8. Reinstall the rear most wheel end housing bolt hand tight with one 7/16 in. flat washer on each side of the P-clip.

**NOTE: Reinstall the wheel end housing information tag during the installation process if previously removed in step 3.**

9. Inspect the hose routing to make sure no brake line abrasion points were introduced. If abrasion points are found, adjust the hose position in the P-clip grommet to eliminate the abrasion.
10. Install the second wheel-end housing bolt.
11. Torque both wheel-end housing bolts to 37 ft-lb (50 Nm) and make sure the P-clip is retained in the vertical position. Refer to Figure 5.

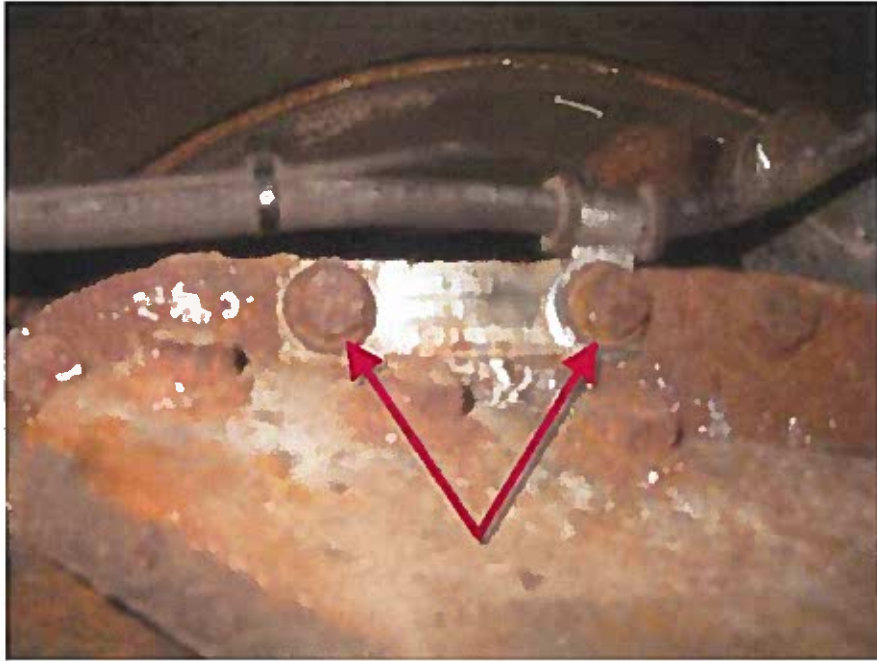


Figure 5

12. Repeat steps 2 thru 11 on the left side.

13. Remove the unit from the lift.

## END OF SERVICE PROCEDURE

## **LABOR INFORMATION**

<b>Operation Number</b>	<b>Description</b>	<b>Time</b>
A40-12501-1	Reposition brake line P-clamps, both sides.	1.0

## **CAMPAIGN IDENTIFICATION LABEL**

Each vehicle corrected in accordance with this campaign must be marked with a CTS-1075 Campaign Identification Label.

Complete the label and attach on a clean surface next to the vehicle identification number (VIN) plate.

**DO NOT REMOVE**  
**INTERNATIONAL**  
Campaign No.  
VIN  
Eng.#  
**COMPLETED**  
Service Location Code #  
**DO NOT REMOVE**

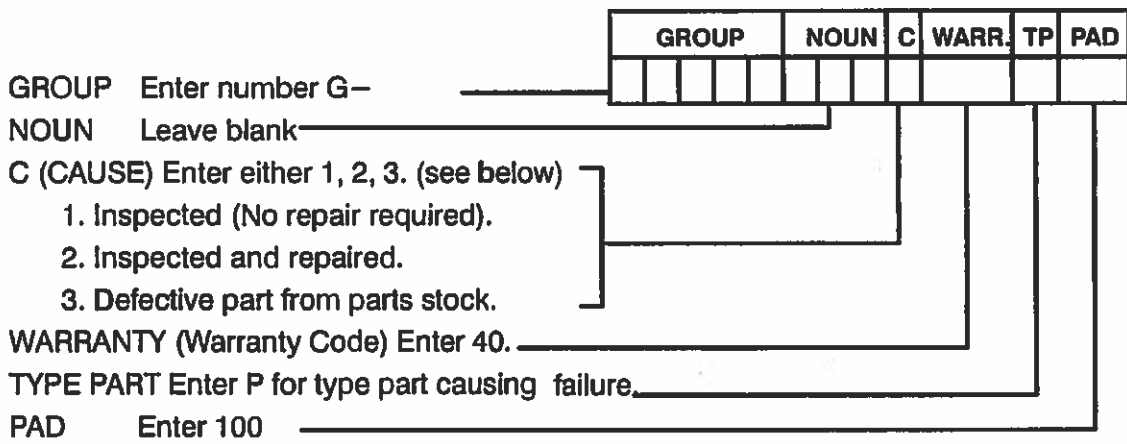
## **ADMINISTRATIVE/DEALER RESPONSIBILITIES**

### **WARRANTY CLAIMS**

Warranty claim expense is to be charged to Warranty. Claims are to be submitted in the normal manner, making reference to Safety Recall 12501.

It is important that the coding be completed properly to assist in processing the warranty claim. Complete instructions will be found in the Warranty Policy Manual, Section 7.1.8.

As with all claim submission, items acquired locally must be submitted in the "Other Charges" tab. The cost of any bulk items (bag of cable tie straps, roll of wire, barrel of oil, tube of silicone, etc.) should be prorated for the cost of the individual pieces/amount used during each repair.



**UNITED STATES AND POSSESSIONS**

The National Traffic and Motor Vehicle Safety Act, as amended, provides that each vehicle that is subject to a vehicle recall campaign must be adequately repaired within a reasonable time after the owner has tendered it for repair. A failure to adequately repair within 60 days after a tender of a vehicle is prima facie evidence of failure to repair within a reasonable time. If the condition is not adequately repaired within 60 days, the owner may be entitled to replacement with an identical or reasonable equivalent vehicle at no charge, or to a refund of the purchase price less a reasonable allowance for depreciation.

Dealers must correct all vehicles subject to this campaign at no charge to the owner, regardless of mileage, age of vehicle, or ownership, from this time forward.

Dealers should proceed immediately to make necessary correction to units in inventory. All inventory vehicles subject to this recall campaign must be corrected prior to sale, transfer, or delivery. If vehicles have been sold or transferred and you are in receipt of Customer Notification Letters and Authorization for Recall Service cards for those vehicles, the transfer location or customer must be notified immediately from your dealer location.

Dealers must make every effort to promptly schedule an appointment with each owner to repair his or her vehicle as soon as possible. However, consistent with the customer notification, dealers are expected to complete the repairs on the mutually agreed upon service date.

Dealers involved in the recall process will be furnished a listing of owner names and addresses to enable them to follow up with owners and have the vehicles corrected. Use of this listing must be limited to this campaign because the list may contain information obtained from state motor vehicle registration records and the use of such motor vehicle registration data for purposes other than this campaign is a violation of law in several states.

## **CANADA**

Dealers must correct all vehicles subject to this campaign at no charge to the owner, regardless of mileage, age of vehicle, or ownership, from this time forward.

Dealers should proceed immediately to make necessary correction to units in inventory. All inventory vehicles subject to this recall campaign must be corrected prior to sale, transfer, or delivery. If vehicles have been sold or transferred and you are in receipt of Customer Notification Letters and Authorization for Recall Service cards for those vehicles, the transfer location or customer must be notified immediately from your dealer location.

Dealers must make every effort to promptly schedule an appointment with each owner to repair his or her vehicle as soon as possible. However, consistent with the customer notification, dealers are expected to complete the repairs on the mutually agreed upon service date.

Dealers involved in the recall process will be furnished a listing of owner names and addresses to enable them to follow up with owners and have the vehicles corrected. Use of this listing must be limited to this campaign because the list may contain information obtained from state motor vehicle registration records and the use of such motor vehicle registration data for purposes other than this campaign is a violation of law in several states.

## **EXPORT**

Export Distributors should proceed immediately to make necessary correction to units in inventory. All inventory vehicles subject to this recall campaign must be corrected prior to sale, transfer, or delivery. If vehicles have been sold or transferred and you are in receipt of Customer Notification Letters and Authorization for Recall Service cards for those vehicles, the transfer location or customer must be notified immediately from your distributor location.

Export Distributors are to submit warranty claims in the usual manner making reference to this recall number.

Export Distributors are expected to provide full cooperation and follow-up with respect to this important subject matter. If you have any questions or need further assistance, please contact the Regional Service Manager at your regional office.

**NAVISTAR, INC**