

EXHIBIT B

Vermeer

Brush Chipper

BC-1500



Vermeer®

EXHIBIT B

BC 1500

Brute Power and Performance

When it comes to the tree-care industry, there is a line of brush chippers that has earned a reputation for its jobsite productivity and operator safety features: *Vermeer*.

The Vermeer® BC1500 drum-style brush chipper is yet another innovative machine designed for natural disaster cleanup or other applications in which contractors and municipalities require a 15" (38.1 cm) chipping capacity.

The BC1500 is powered by a 125 hp (93.2 kW) John Deere Tier 3 diesel engine and is equipped with a 45 gal (170.3 L) fuel tank that allows approximately 17-plus hours of continuous operation. Other productivity enhancing features include an automotive-style clutch that negates the need for frequent clutch-plate adjustment, large gauges for easy monitoring, and a precision-balanced 22.5" (57.2 cm) drum with two 5" x 8" (12.7 cm x 20.3 cm) A8 double-sided knives.

Add patented and patent-pending features such as SmartFeed, a four-position feed control bar, and the Bottom Feed Stop Bar system and you have the latest technology from Vermeer built into this high-performance brush chipper. Options such as powered chute rotation and hydraulic winch are also available.

Strength for Today's Demanding Jobsites



Help improve chipping productivity. The SmartFeed system monitors engine rpm and automatically stops and / or reverses the feed rollers to enhance production. This system also senses feed-roller jams and manipulates the material automatically to reduce the need for manual control bar use.



Packed with power. A John Deere 125 hp (93.2 kW) Tier 3 diesel engine offers productivity to complete most types of tree-care jobs.



Easily lift heavy material. An optional winch allows operators to move large logs effortlessly. The 150' (45.7 m) winch line can handle logs up to 2000 lb (907.2 kg) and can automatically lift the log onto the feed table.

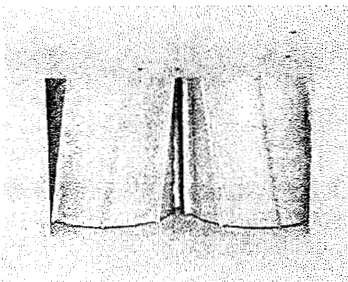
EXHIBIT B

Brush Chipper



Operator safety.

Combined with the patented Bottom Feed Stop Bar is a four-position upper-feed control bar with dual stop positions and forward / reverse feed positions. Mounted over the feed table, this enables the operator to stop the feed rollers and select forward or reverse operations. Dual reset / hold-to-run buttons allow the operator to readily reset the Bottom Feed Stop Bar.



Smooth feeding.

Vertical feed rollers with helical cleats help hold material firmly to the infeed table which reduces vibration, shock, and structural loading to the rear of the machine.

BC1500 Specifications

General

Weight: 6907 lb (3133 kg)
Length (transport): 179" (454.7 cm)
Length (operational): 217" (551.2 cm)
Width: 86" (218.4 cm)
Height: 104" (264.2 cm)

Engine

Make / model: John Deere 4045H Tier 3
Horsepower: 125 hp (93.2 kW) @ 2400 rpm
Fuel type: Diesel
Number of cylinders: 4
Displacement: 275 cu in (4.5 L)

Capacities

Fuel tank: 45 gal (170.3 L)
Hydraulic tank: 12 gal (45.4 L)

Cutting System

Drum size: 22.5" dia. x 22" wide (57.2 cm x 55.9 cm)
Speed: 1980 rpm
Knives: A8 chipper steel
Quantity of knives: 2
Bedknife: Four usable edges

Feed / Discharge System

Infeed throat / feed capacity: 15" x 20"
(38.1 cm x 50.8 cm)
Feed table length: 30" (76.2 cm)
Feed table height: 27" (68.6 cm)
Feed roller style: Twin vertical, helical cleats
Infeed rate: 0 fpm - 122 fpm (0 m/min - 37.2 m/min)

Chassis

Frame: .25" x 7" (6 cm x 17.8 cm) fabricated Z-section
Tires (standard): ST235/80R16 load range E
Tires (optional): LT285/75R16 load range E (flotation)
Axle / suspension: 7000 lb (3175 kg) rubber torsion
Electric brakes with breakaway switch

Electrical

System voltage: 12 V
Lights: Brake, turn, tail, license, side indicators

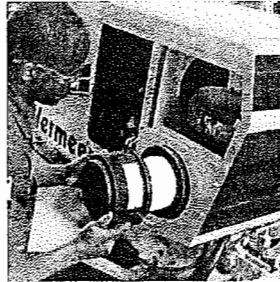


The 3-year / 3,000-hour extended warranty on drum housings, cutter drums, shaft, and ring feeder hubs offers you peace of mind, in addition to the 1-year / 1,000-hour Vermeer equipment limited warranty.

The Vermeer dealer network: Reliable support, all over the world.



With nearly 200 locations across the globe - you're never far from an independent, authorized Vermeer dealer. Our dealers are in place to support your success with product expertise that's second to none.



When you need service, you can count on your local Vermeer dealer. With multiple locations, remote service trucks, and factory-offered technician training, your local Vermeer dealer offers reliable service that keeps your equipment running.



Vermeer parts are designed and manufactured to original specifications, so whether they're new parts or replacement parts, they'll live up to the Vermeer name.



Vermeer EMEA
(Europe, Middle East, Africa and CIS)
P.O. Box 323
4460 AS Goes
the Netherlands
Phone: +31 113 272700
Fax: +31 113 272727

Vermeer Corporation
1210 Vermeer Road East
P.O. Box 200
Pella, Iowa 50219 U.S.A.
Phone: (641) 628-3141
Fax: (641) 621-7773
International fax: +1 (641) 621-7730
www.vermeer.com

Vermeer Asia Pacific
48 Toh Guan Road East
#01-105 Enterprise Hub
Singapore 608586
Phone: +65 6516 9500
Fax: +65 6515 9218

Call toll-free 1-888-VERMEER
1-888-837-6337 (USA only)

Building Industry Alliances to Serve You Better.

Vermeer has forged strong strategic alliances with tree-industry giants that include Sherrill Incorporated and ArborMaster Training. These alliances ensure that top-quality industry support is the standard at Vermeer dealerships. Membership with the NAA and ISA helps Vermeer stay in touch with the customers it serves and the issues they face.



Equipment shown is for illustrative purposes only and may display optional accessories or components. Please contact your local Vermeer dealer for more information about machine specifications. Vermeer Corporation reserves the right to make changes in engineering, design and specifications; add improvements; or discontinue manufacturing at any time without notice or obligation. Vermeer and the Vermeer logo are trademarks of Vermeer Manufacturing Company in the U.S. and / or other countries. John Deere is a trademark of Deere and Company. Sherrill is a trademark of Sherrill Incorporated. ArborMaster Training is a trademark of ArborMaster.
© 2009 Vermeer Corporation. All Rights Reserved.

EXHIBIT C



EXHIBIT D

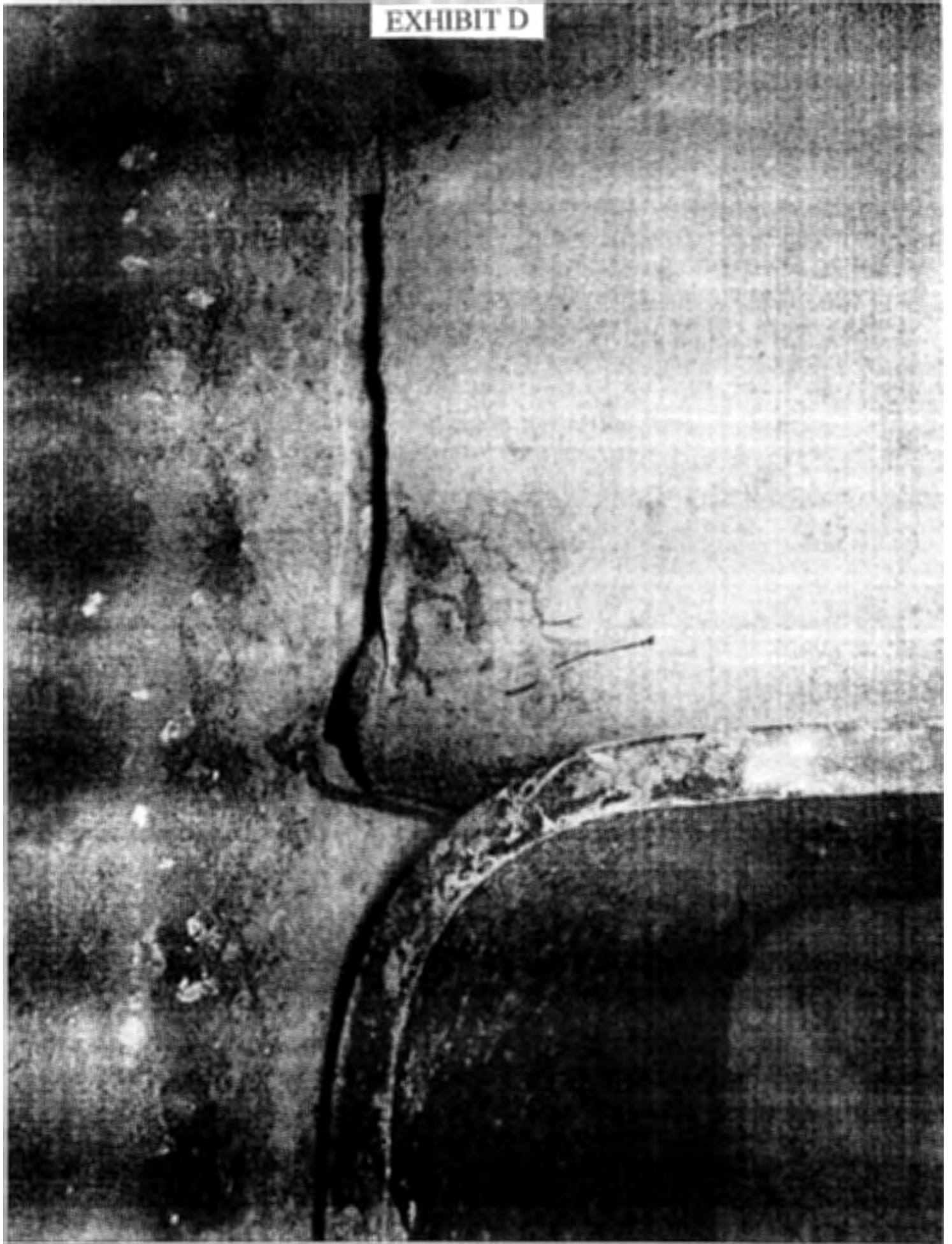


EXHIBIT E

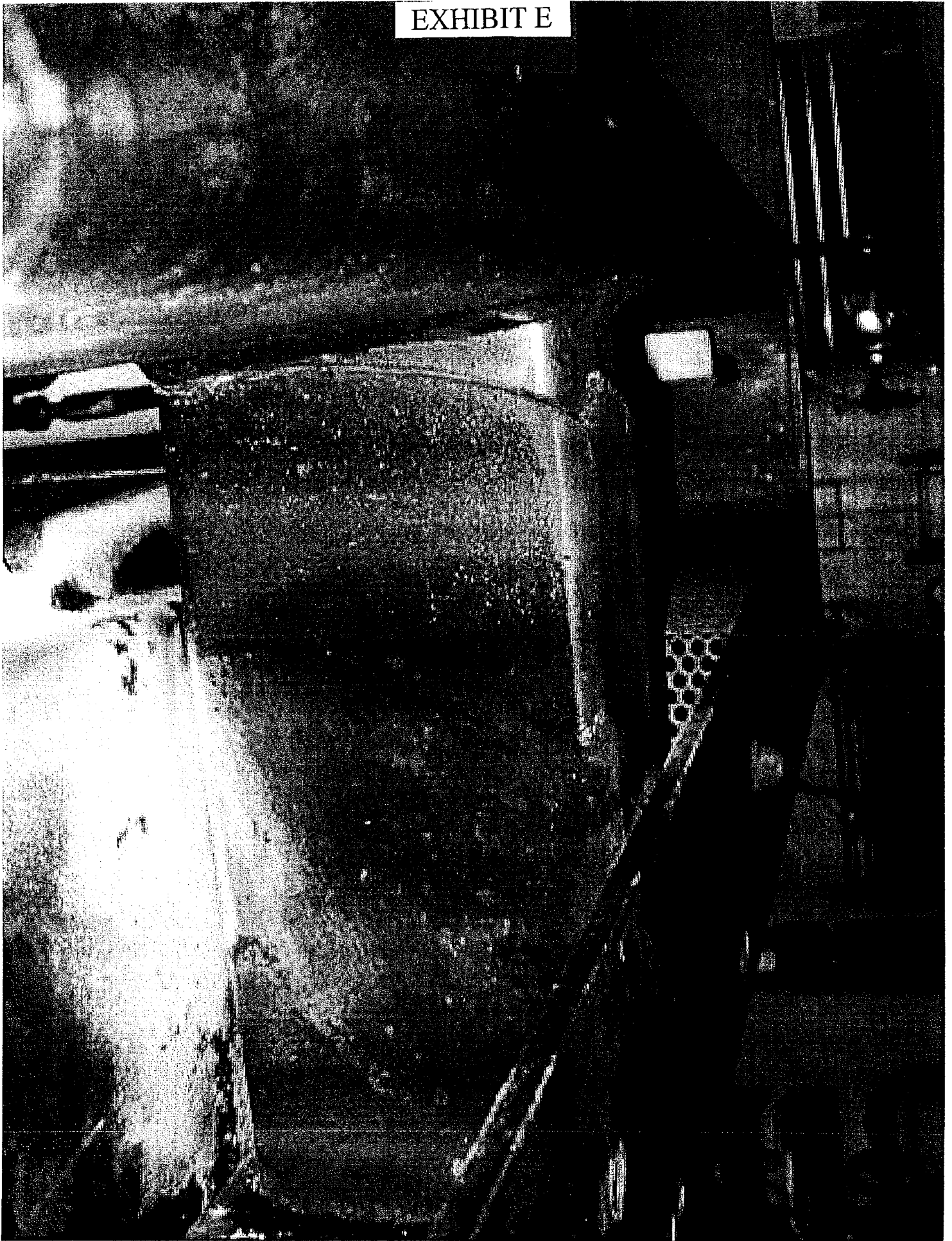
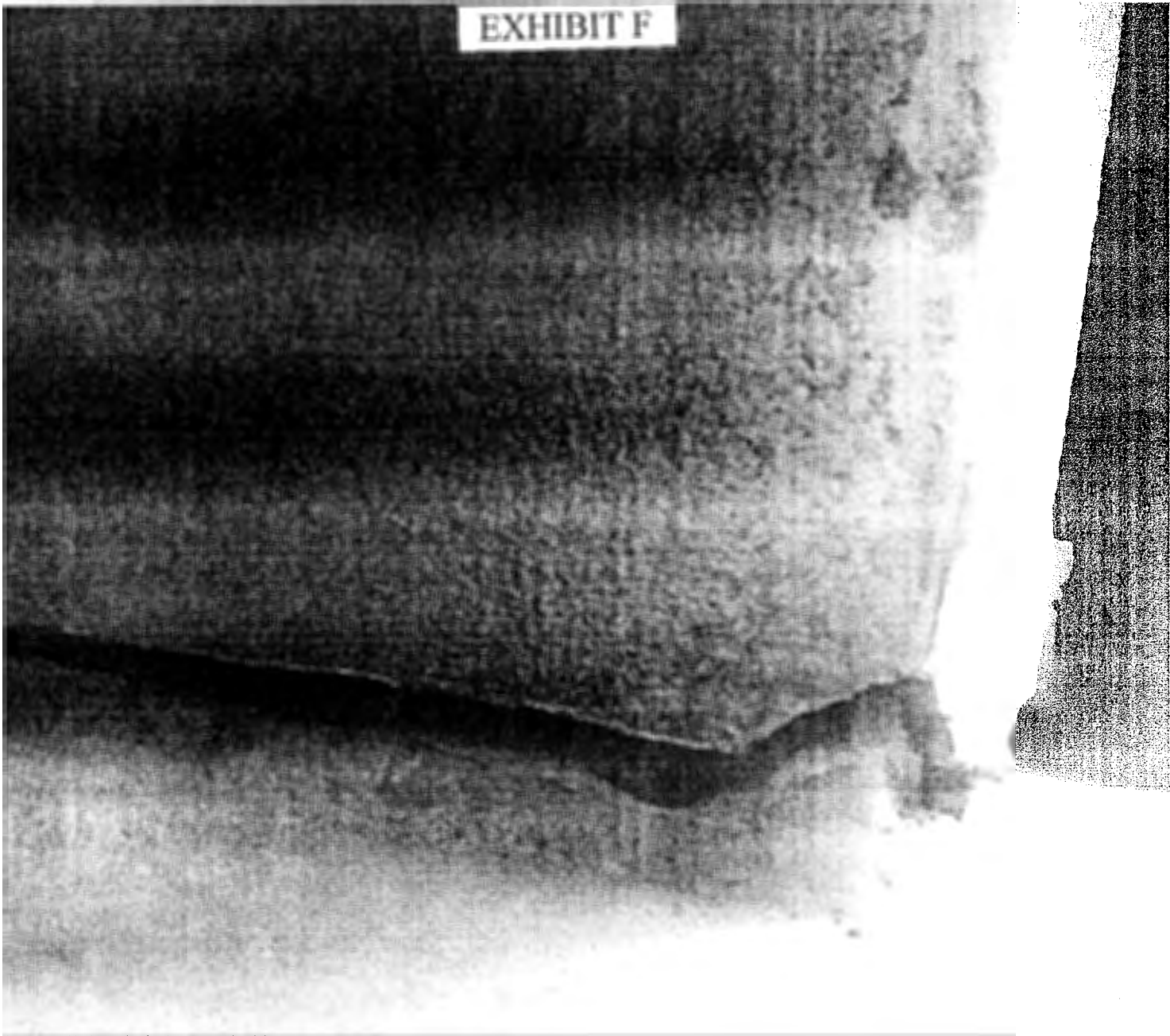


EXHIBIT F



PROTOTYPE

PROTOTYPE

PROTOTYPE

PROTOTYPE

163677823

WPS 3-3-A-100

PROTOTYPE

PROTOTYPE

PROTOTYPE

PROTOTYPE

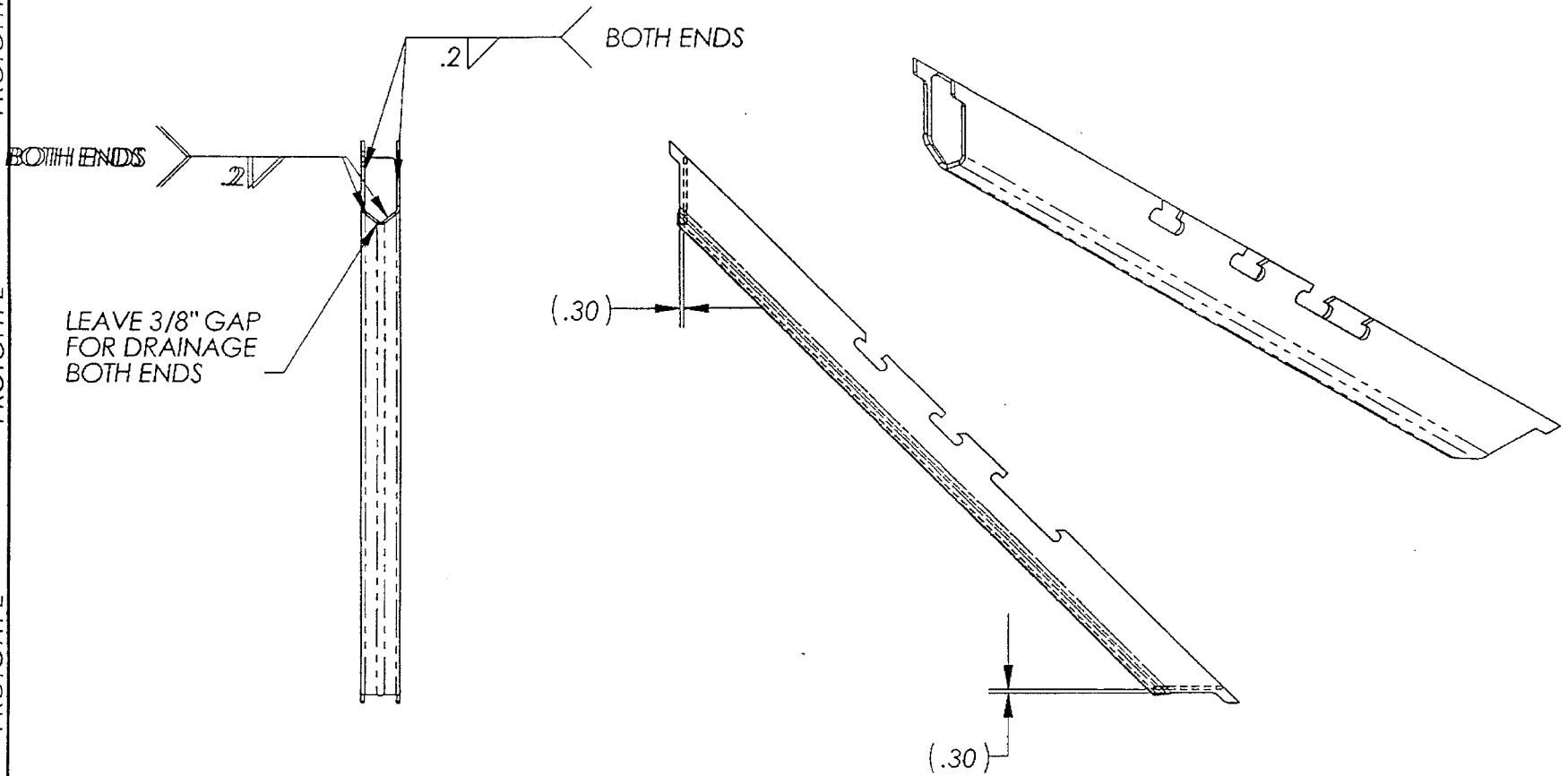
PROTOTYPE

PROTOTYPE

PROTOTYPE

PROTOTYPE

EXHIBIT G



NEW DXF REQUIRED

							A	DO NOT SCALE DRAWING	Approximate Weight = 38.26 lb.
						3RD ANGLE PROJECTION	1 PAGE OF 1	SUB. MATL SPECS	
						UNLESS OTHERWISE SPEC.	DESCRIPTION	TUBE WELDMENT	
						DIAMNS. IN INCHES	ITEM NUMBER	163677823	
						ANSI Y14.5 - 1982	DESIGN BY	RCH	
						W.P.S 3 - A - 100	DATE	3/5/2012	
						STD. TOLERANCES			
						X, X ± .060			
						X, XX ± .030			
						X, XXX ± .010			
X1A				RCH	3/5/2012	FRAC. DIM. ± 1/32			
REV	ECN	CHANGE DESCRIPTION	CHANGE BY	DATE		DEC. = 1			

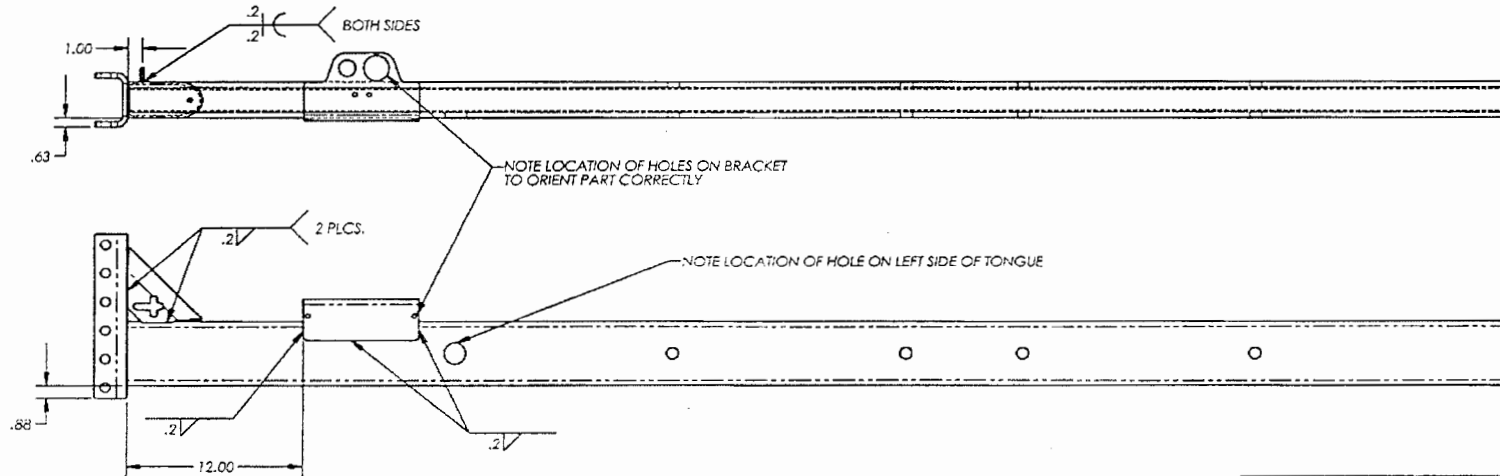
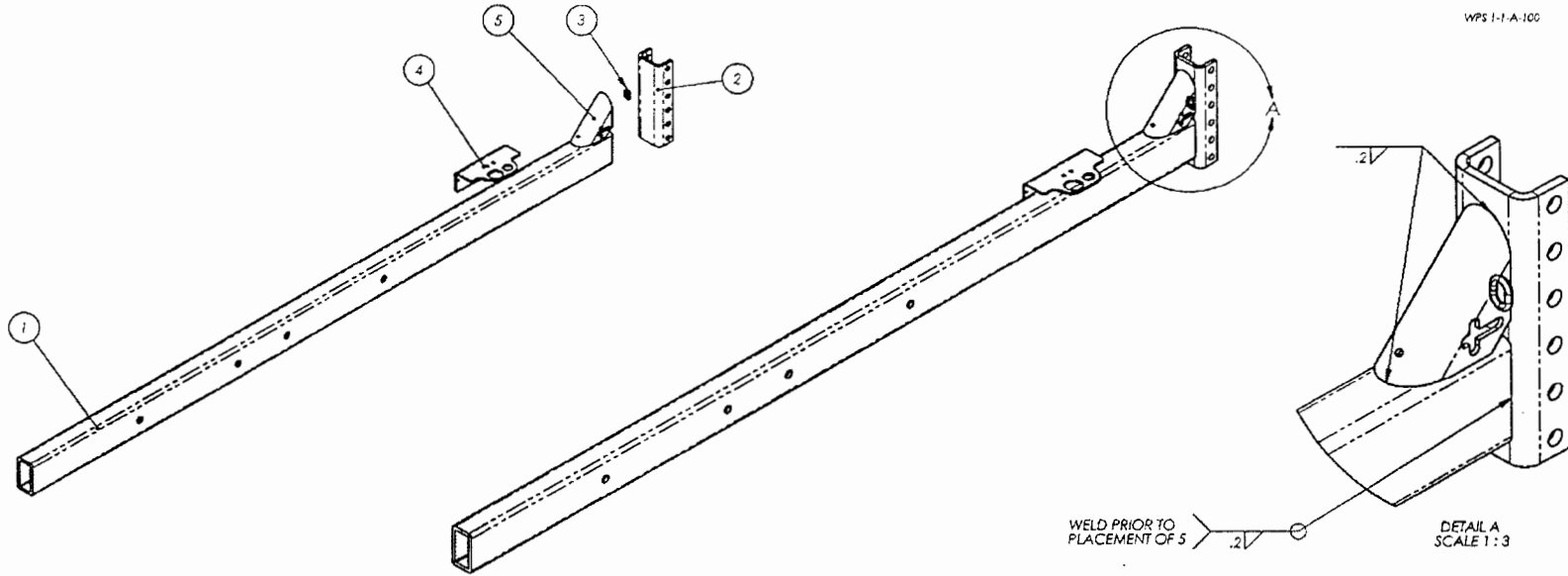
NOTICE: THIS DOCUMENT AND ITS CONTENTS ARE THE PROPERTY OF VERMEER CORPORATION. NO USE OR COPIES MAY BE MADE WITHOUT WRITTEN PERMISSION FROM VERMEER



163677866

PAINT BLACK PER VRM 11-002

WPS 1-1-A-100



REQD	ITEM NUMBER	DESCRIPTION	NUM
1	163677866	TUBE - INNER TONGUE	1
1	118024001	MOUNT - HITCH	2
1	901001	1/4" ROPE GUIDE WIRE FORMED	3
1	156885001	MOUNT - BREAKAWAY SWITCH	2
1	1A3647040	CLISSET - TONGUE	5

C		DO NOT SCALE DRAWING	Approximate Weight = 136.34 lb.
1	PAGE 1	1/8" DIA. SPECT.	
DESCRIPTION		TONGUE - BC1500 DOMESTIC	
PART NUMBER		163677866	
REVISIONS		NOTICE: THE QUALITY OF THE PRODUCT OF VERMEER CORPORATION IS ASSURED BY THE COMPANY'S ISO 9001 CERTIFICATION.	
REV	DATE	BY	CHKD
A	5/27/2012	G.J.L.	
REV	DATE	BY	CHKD



EXHIBIT H