



Navistar, Inc.  
2701 Navistar Drive  
Lisle, IL 60532 USA

navistar.com

MAILED  
JAN 30 2013  
Compliance Dept.



A NAVISTAR COMPANY

## SAFETY RECALL INTERIM NOTICE G-12530

JANUARY 2013

Dear INTERNATIONAL® Customer,

This notice is being sent to you in accordance with the requirements of the National Traffic and Motor Vehicle Safety Act.

Navistar has decided that a defect which relates to motor vehicle safety exists in certain ProStar® and TranStar® model trucks built 1 August 2011 thru 12 June 2012 with feature code 0504501, 0504504, or 04EWM.

### **REASON FOR THIS RECALL**

The brake S-Cam tube bracket assemblies on steer axles may exhibit fractures between the wing bracket and the tube steel when mounted to stamped spiders.

### **RISK TO MOTOR VEHICLE SAFETY**

Fractures between the wing bracket and the tube steel may result in an inoperative brake on the affected wheel end resulting in an unexpected pull condition during braking application or an unexpected increase in stopping distance and may contribute to a vehicle crash which may result in property damage, personal injury, or death.

### **ACTIONS YOU SHOULD TAKE**

A final remedy is under development and repair parts will not be available until mid April 2013. When parts become available, you will be notified of additional actions you should take.

To prevent the occurrence of this defect in the interim period when performing your pre-trip inspection, inspect for cracks between the S-Cam tube and wing bracket joint as illustrated on the back side of this letter. If any cracks are found, bring your truck to the nearest International® dealer for repair. Or at your option, you may also have your International® dealer perform this inspection during the interim period.

You can find your nearest dealer by calling 1-800-448-7825 or by using the dealer locator at <http://www.internationaltrucks.com>.

If you are the lessor of this vehicle, please forward a copy of this notice to the lessee within ten days to comply with federal regulations.

### **IF YOU NEED FURTHER ASSISTANCE**

Refer to the Owner Assistance Guide section in your Owner's Manual or call toll free 1-800-448-7825.

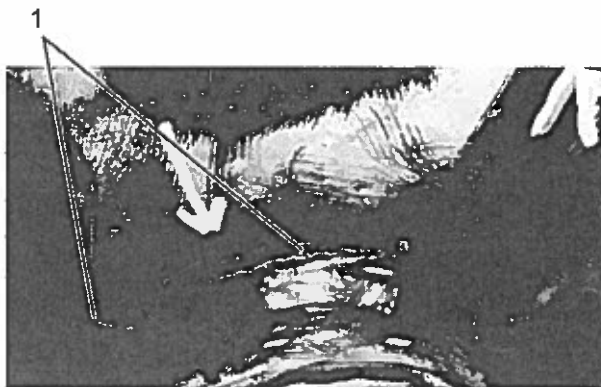
Navistar requests your prompt attention and patience regarding the correction of this defect and apologizes for any inconvenience this may cause you.

**Navistar, Inc.**

**WARNING! PARK VEHICLE ON HARD FLAT SURFACE, TURN THE ENGINE OFF, SET THE PARKING BRAKE AND BLOCK THE WHEELS TO PREVENT THE VEHICLE FROM MOVING IN BOTH DIRECTIONS. FAILURE TO DO SO MAY RESULT IN PROPERTY DAMAGE, PERSONAL INJURY AND/OR DEATH.**

**WARNING! ALWAYS WEAR SAFE EYE PROTECTION WHEN PERFORMING VEHICLE MAINTENANCE. FAILURE TO DO SO MAY RESULT IN SERIOUS EYE INJURY.**

**WARNING! ALLOW COMPONENTS IN ENGINE COMPARTMENT TO COOL BEFORE SERVICING ENGINE OR VEHICLE. FAILURE TO DO SO MAY RESULT IN PROPERTY DAMAGE, PERSONAL INJURY AND/OR DEATH.**



0000041929

**Figure 2. S-Cam Tube and Wing Bracket.**

1. Crack between S-Cam tube and wing bracket.

**Inspect entire area between the S-Cam tube and wing bracket for cracks (Figure 1, Item 1 and Figure 2, item 1).**



0000041930

**Figure 1. S-Cam Tube and Wing Bracket.**

1. Area between S-Cam tube and Wing bracket.