



NISSAN NORTH AMERICA, INC.

Corporate Office
P.O. Box 685001
Franklin, TN 37068-5001
Telephone 615.725.1000

OWNER NOTIFICATION

NHTSA RECALL 12V-102 NHTSA RECALL 12V-143

Dear Nissan Titan owner:

This notice is sent to you in accordance with the requirements of the National Traffic and Motor Vehicle Safety Act. Nissan has decided that the Certification label and Tire and Loading Information label on your Model Year 2012 Nissan Titan fails to conform to one of the requirements specified in Federal Motor Vehicle Safety Standard (FMVSS) No. 110 "Tire Selection and Rims." Our records indicate that you own or lease the Nissan vehicle identified on the inside of this notice.

Reason for Recall

The Certification label located on the driver's door pillar near the door latch of your vehicle does not contain rim size information as required by the applicable regulation. Adhering to the tire and rim size information on the certification label is important because an incorrect tire and wheel combination may increase the likelihood of a crash. To address this Nissan is providing a corrected certification label containing the required information.

Separately, the Tire and Loading Information label on your vehicle incorrectly states the seating capacity as 6, instead of 5 occupants. **The correct seating capacity in your vehicle is 5.** Overloading may occur by allowing more than 5 occupants to ride in your vehicle which can increase the risk of an injury in a crash. We are providing you with a replacement Tire and Loading Information label containing the correct seating capacity.

What Nissan Will Do

Provided with this notification are a replacement Certification label and Tire and Loading Information labels that are specific to your vehicle. Also included with this letters are instructions on how to affix both labels.

What You Should Do

Please replace the Certification label and Tire and Loading Information label on your vehicle with the ones included with this notice. Instructions for affixing the new labels are provided with this letter.

If you prefer, you may contact your Nissan dealer and make an appointment to have the Nissan dealer affix the new labels for you at **no charge for parts or labor**. Please bring this notice and the replacement labels with you to the service appointment. If the dealer fails, or is unable to make the necessary repairs free of charge, you may contact the National Consumer Affairs Department, Nissan North America, Inc. P.O. Box 685003, Franklin, TN 37068-5003. The toll free number is 1-800-NISSAN1 (1-800-647-7261).

You may also submit a complaint to the Administrator, National Highway Traffic Safety Administration, 1200 New Jersey Avenue, SE., Washington, DC 20590; or call the toll-free Vehicle Safety Hotline at 1-888-327-4236 (TTY: 1-800-424-9153); or go to <http://www.safercar.gov>.

Federal law requires that any vehicle lessor receiving this recall notice must forward a copy of this notice to the lessee within ten days.

Thank you for your cooperation. We are indeed sorry for any inconvenience this may cause you.

Installation Instructions – Certification Label

NOTE:

- Enclosed please find a replacement Certification label **specific to your vehicle**. Make sure the VIN on the label matches the VIN on your vehicle.
- **DO NOT REMOVE THE EXISTING LABEL.** Affix the replacement label over the existing label.
- Each replacement Certification label is vehicle specific. Make sure the VIN on the new Certification label matches the VIN on the old Certification label.

1. Park the vehicle in a safe place with the ignition OFF, the parking brake ON, and your automatic transmission in "P."
2. Open the driver's door.
3. Locate the existing Certification label (see figure 1)
4. Clean the label and the area around it with a mild detergent and water.

NOTE:

- Care should be taken not to use harsh chemicals that may damage the existing label.
 - It is important the surface be free of dirt and oil to ensure proper adhesion of the new label.
5. Completely dry the label and the area around it.
 6. Peel the new label from the backing sheet and affix it directly over the top of the existing label (see Figure 2).

NOTE: The adhesive on the label is permanent. Extra care should be taken when applying the new label since it can not be moved once it is attached.



Figure 1

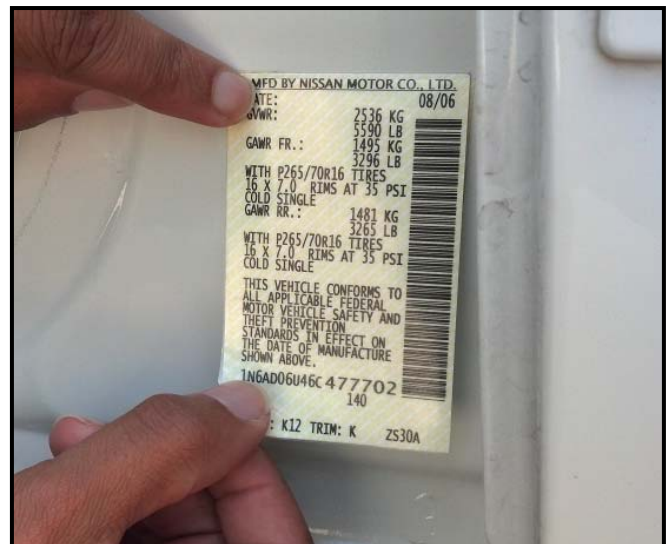


Figure 2

Installation Instructions - Tire and Loading Information Label

NOTE:

- Enclosed please find a replacement tire information label **specific to your vehicle**. Make sure the VIN on the inside of your Owner's Letter matches the VIN on your vehicle.
- **DO NOT REMOVE THE EXISTING LABEL.** Affix the replacement label over the existing label.

1. Park the vehicle in a safe place with the ignition OFF, the parking brake ON, and your automatic transmission in "P" (manual transmissions in gear).
2. Open the driver's door.
3. Locate the existing Tire and Loading information label (see figure 1).

4. Clean the label and the area around it with a mild detergent and water.

NOTE:

- Care should be taken not to use harsh chemicals that may damage the existing label.
- It is important the surface be free of dirt and oil to ensure proper adhesion of the new label.



Figure 1

5. Completely dry the label and the area around it.
6. Peel the new label from the backing sheet and affix it directly over the top of the existing label (see Figure 2).

NOTE: The adhesive on the placard is permanent. Extra care should be taken when applying the new placard since it can not be moved once it is attached.



Figure 2



NISSAN NORTH AMERICA, INC.

Corporate Office
P.O. Box 685001
Franklin, TN 37068-5001
Telephone 615.725.1000

OWNER NOTIFICATION**NHTSA RECALL 12V-143**

Dear Nissan Titan owner:

This notice is sent to you in accordance with the requirements of the National Traffic and Motor Vehicle Safety Act. Nissan has decided that the Certification label on your Model Year 2012 Nissan Titan fails to conform to one of the requirements specified in Federal Motor Vehicle Safety Standard (FMVSS) No. 110 "Tire Selection and Rims." Our records indicate that you own or lease the Nissan vehicle identified on the inside of this notice.

Reason for Recall

The Certification label located on the driver's side door pillar near the door latch of your vehicle does not contain rim size information as required by the applicable regulation. Adhering to the tire and rim size information on the Certification label is important because an incorrect tire and wheel combination may increase the likelihood of a crash. To address this Nissan is providing a corrected certification label containing the required information.

What Nissan Will Do

Provided with this notification is a VIN-specific replacement Certification label that contains the rim size, tire size and inflation pressures for your vehicle. Also included (on the reverse side of this letter) are instructions on how to affix it.

What You Should Do

Please replace the Certification label on your vehicle with the one included with this notice. Instructions for affixing the new label are on the reverse side of this letter.

If you prefer, you may contact your Nissan dealer and make an appointment to have the Nissan dealer affix the new label for you at **no charge for parts or labor**. Please bring this notice and the replacement label with you to the service appointment. If the dealer fails, or is unable to make the necessary repairs free of charge, you may contact the National Consumer Affairs Department, Nissan North America, Inc. P.O. Box 685003, Franklin, TN 37068-5003. The toll free number is 1-800-NISSAN1 (1-800-647-7261).

You may also submit a complaint to the Administrator, National Highway Traffic Safety Administration, 1200 New Jersey Avenue, SE., Washington, DC 20590; or call the toll-free Vehicle Safety Hotline at 1-888-327-4236 (TTY: 1-800-424-9153); or go to <http://www.safercar.gov>.

Federal law requires that any vehicle lessor receiving this recall notice must forward a copy of this notice to the lessee within ten days.

Thank you for your cooperation. We are indeed sorry for any inconvenience this may cause you.

Installation Instructions

NOTE:

- Enclosed please find a replacement Certification label **specific to your vehicle**. Make sure the VIN on the new Certification label matches the VIN on the old Certification label.
- **DO NOT REMOVE THE EXISTING LABEL.** Affix the replacement label over the existing label.

1. Park the vehicle in a safe place with the ignition OFF, the parking brake ON, and your automatic transmission in "P" (manual transmissions in gear).
2. Open the driver's door.
3. Locate the existing Certification label (see figure 1)
4. Clean the label and the area around it with a mild detergent and water.

NOTE:

- Care should be taken not to use harsh chemicals that may damage the existing label.
 - It is important the surface be free of dirt and oil to ensure proper adhesion of the new label.
5. Completely dry the label and the area around it.
 6. Peel the new label from the backing sheet and affix it directly over the top of the existing label (see Figure 2).

NOTE: The adhesive on the label is permanent. Extra care should be taken when applying the new placard since it can not be moved once it is attached.



Figure 1

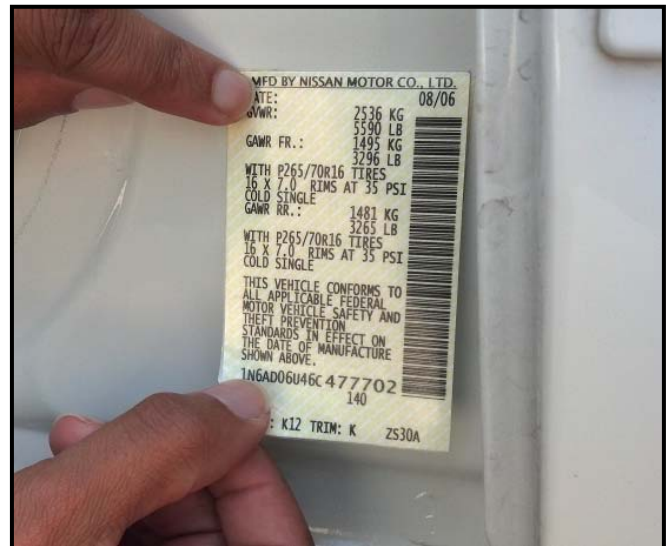


Figure 2



NISSAN NORTH AMERICA, INC.

Corporate Office
P.O. Box 685001
Franklin, TN 37068-5001
Telephone 615.725.1000

OWNER NOTIFICATION**NHTSA RECALL 12V-143**

Dear Nissan Armada owner:

This notice is sent to you in accordance with the requirements of the National Traffic and Motor Vehicle Safety Act. Nissan has decided that the Certification label on your Model Year 2012 Nissan Armada fails to conform to one of the requirements specified in Federal Motor Vehicle Safety Standard (FMVSS) No. 110 "Tire Selection and Rims." Our records indicate that you own or lease the Nissan vehicle identified on the inside of this notice.

Reason for Recall

The Certification label located on the driver's side door pillar near the door latch of your vehicle does not contain rim size information as required by the applicable regulation. Adhering to the tire and rim size information on the Certification label is important because an incorrect tire and wheel combination may increase the likelihood of a crash. To address this Nissan is providing a corrected certification label containing the required information.

What Nissan Will Do

Provided with this notification is a VIN-specific replacement Certification label that contains the rim size, tire size and inflation pressures for your vehicle. Also included (on the reverse side of this letter) are instructions on how to affix it.

What You Should Do

Please replace the Certification label on your vehicle with the one included with this notice. Instructions for affixing the new label are on the reverse side of this letter.

If you prefer, you may contact your Nissan dealer and make an appointment to have the Nissan dealer affix the new label for you at **no charge for parts or labor**. Please bring this notice and the replacement label with you to the service appointment. If the dealer fails, or is unable to make the necessary repairs free of charge, you may contact the National Consumer Affairs Department, Nissan North America, Inc. P.O. Box 685003, Franklin, TN 37068-5003. The toll free number is 1-800-NISSAN1 (1-800-647-7261).

You may also submit a complaint to the Administrator, National Highway Traffic Safety Administration, 1200 New Jersey Avenue, SE., Washington, DC 20590; or call the toll-free Vehicle Safety Hotline at 1-888-327-4236 (TTY: 1-800-424-9153); or go to <http://www.safercar.gov>.

Federal law requires that any vehicle lessor receiving this recall notice must forward a copy of this notice to the lessee within ten days.

Thank you for your cooperation. We are indeed sorry for any inconvenience this may cause you.

Installation Instructions

NOTE:

- Enclosed please find a replacement Certification label **specific to your vehicle**. Make sure the VIN on the new Certification label matches the VIN on the old Certification label.
- **DO NOT REMOVE THE EXISTING LABEL.** Affix the replacement label over the existing label.

1. Park the vehicle in a safe place with the ignition OFF, the parking brake ON, and your automatic transmission in "P" (manual transmissions in gear).
2. Open the driver's door.
3. Locate the existing Certification label (see figure 1)
4. Clean the label and the area around it with a mild detergent and water.

NOTE:

- Care should be taken not to use harsh chemicals that may damage the existing label.
 - It is important the surface be free of dirt and oil to ensure proper adhesion of the new label.
5. Completely dry the label and the area around it.
 6. Peel the new label from the backing sheet and affix it directly over the top of the existing label (see Figure 2).

NOTE: The adhesive on the label is permanent. Extra care should be taken when applying the new placard since it can not be moved once it is attached.



Figure 1

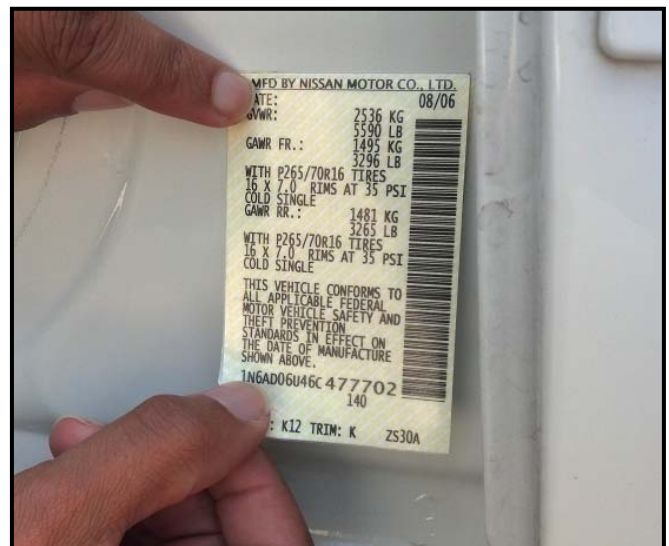


Figure 2