



Recall Campaign

NHTSA#: 12V-451

TC#: 2012-303

Job Code: 9901107

Flat Rate: 0.7 hrs

REQUIRES PARTS TO BE ORDERED FROM Jayco for every unit.

ACTION REQUIRED:

Replace the Iota transfer switch

MODELS / UNITS:

2008 Models

Greyhawk Class C Motor Home

31SS **81MJ**0051-0435

Octane

T26Y **81VY**0051-0274, 0276-0335, 0348-0361, 0363-0365, 0402-0435

87VY0275, 0336-0347, 0366-0401, 0436-0451

Melbourne Class C Motor Home

29C **81YC**0051-0200

2009 Models

Greyhawk Class C Motor Home

31SS **91MJ**0051-0186

31GS **91MM**0051-0065

Octane Sport Utility Travel Trailer

T29M **91VM**0050-0129

T26Y **91VY**0050-0075, 0088-0105, 0112-0159, 0184-0207

97VY0076-0087, 0106-0111, 0160-0183, 0208-0214

Melbourne Class C Motor Home

29D **91YD**0051-0124

2010 Models

Octane Sport Utility Travel Trailer

T29A **A1VA**0051-0105

T26Y **A1VY**0050-0190

Melbourne Class C Motor Home

26A **A1YA**0051-0086

29D **A1YD**0050-0142

2011 Models

Greyhawk Class C Motor Home

31FK **B1MC**0051-0130

26DS **B1MS**0050-0087

Melbourne Class C Motor Home

29D **B1YD**0051-0111

KIT CONTENTS

12V-451

30 amp transfer switch

(2) washers

Instruction sheet

Note: Kit can only be ordered using the order form included with this bulletin.

TOOLS/MATERIAL REQ.:

Flat Blade Screwdriver

Screw gun with square head bit

INSTRUCTIONS

Remove the existing transfer switch

1. Disable the generator, unplug the shore power cord, and disconnect the negative cable from the 12-volt battery.
2. Locate the existing transfer switch. The transfer switch is typically located near the back side of the 120-volt load center. In most cases this is under the bed. Other locations (depending on the model) include on the floor in the refer/pantry cabinet or on the floor in the wardrobe cabinet. Remove the bed platform (or other associated structure) to gain access to the transfer switch.



Only replace the transfer switch if it is the lota brand switch shown.

3. Remove the transfer switch cover and label the orange Romex cables entering the transfer switch. Using a "multi" meter set to the 200 volt A/C range **TEST** all circuits inside the transfer switch to verify that all power is turned off. The Romex cable connected to the power cord buss bar should be labeled "shore" and the cable connected to the control panel buss bar should be labeled "panel".
4. Loosen appropriate set screws and remove all wires entering the transfer switch.
5. Remove the screws that fasten the transfer switch box to the RV.
6. **You will need to remove circuit board from the lota transfer switch and return it to Jayco.** To remove the board, insert a screwdriver in the recessed space at the top of the board and gently pry it towards the bottom of the box and up. Once the board is loose, remove the wires by pulling up at the terminal. Discard the old transfer switch.



Installing the new transfer switch

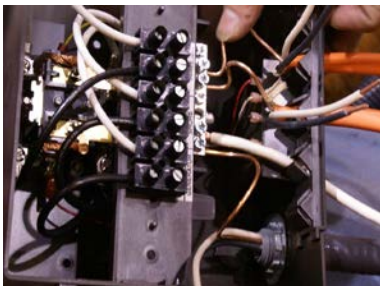
7. Cut off and re-strip all wires as needed. Do not attempt to re-install wires with deformed or otherwise damaged ends.



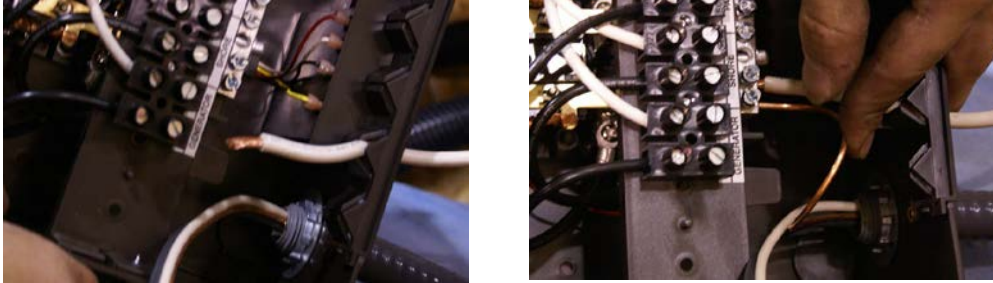
8. Install the **generator** power cable through the opening on the left side of the replacement transfer switch. Use the hole size reduction washers supplied in the recall kit to re-size the hole in the side of the box. Use one washer on each side of the box wall.



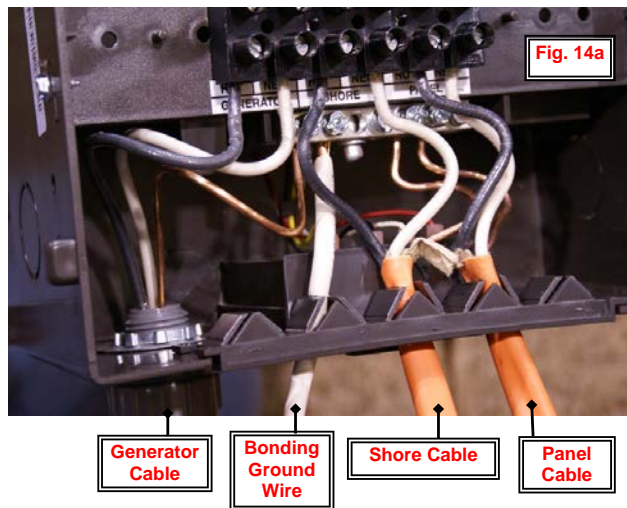
9. Insert the white single 8 gauge ground wire into the second cable entry point from the left, insert the Romex cable labeled "shore" into the middle cable entry point, and insert the Romex cable labeled "panel" into the second cable entry point from the right.



10. Install white single 8 gauge wire and all three bare 10 gauge wires in the ground buss bar. Tighten the appropriate set screws.



11. Install the black generator wire into the terminal labeled generator "hot" and the white generator wire into the terminal labeled generator "neutral". Tighten the appropriate set screws.
12. Install the black shore wire into the terminal labeled shore "hot" and the white shore wire into the terminal labeled shore. Tighten appropriate set screws.
13. Install the black panel wire into the terminal labeled panel "hot" and the white panel wire into the terminal labeled panel "neutral". Tighten appropriate set screws.
14. Verify that all wire connections match those in **Figure 14a**. Torque all connections to the specification listed on the inside surface of the replacement transfer switch cover.



15. Attach the replacement transfer switch to the RV in the original location. Install the transfer switch cover. Install the transfer switch cover.



16. Connect the negative battery cable to the 12-volt battery and plug the shore power cord into a properly wired NEMA TT30 power source.
17. Verify that the 120-volt power comes on inside the RV. Test the 120-volt receptacles in the RV with a polarity tester to verify proper circuit operation.
18. Disconnect the shore power cord and start the generator. After the generator has run for 60 seconds verify that the 120-volt power has come on inside the RV. Test the 120-volt receptacles in the RV with a polarity tester to verify proper circuit operation.
NOTE: This second polarity test MUST be performed to verify correct transfer switch installation.
19. Re-assemble the bed platform used to gain access to the transfer switch cavity (if applicable).