

<b>Title</b>	Recall 251 Inspect Fuel Lines for Contact with Underbody Coating	<b>Status</b>	Released
<b>Ref No</b>	US26058.1.2 en-GB	<b>Status Date</b>	2012-05-08
<b>Issuer</b>	-	<b>Issue Date</b>	2012-05-08
<b>Partner</b>	3 US 7510 Volvo Cars North America	<b>Reference</b>	VIDA
<b>Func Group</b>	8000		
<b>Func Desc</b>	body, cab and interior		

**Attachment**

File Name	File Size
TJ 26058.pdf	0.2080 MB

**Vehicle Type**

Type	Eng	Eng Desc	Sales	Body	Gear	Steer	Model Year	Plant	Chassis range	Struc Week Range
134							2012-2012		0124055-0128338	0-0
156							2012-2012		0302264-0308564	0-0

**CSC** Customer Symptom Codes

Code	Description
XW	Service action/Recall/Service action/Recall

**DTC** Diagnostic Trouble Codes

**Text**

**CSC = Customer Symptom Code**

**DTC = Diagnostic Trouble Code**

**Note! If using a printed copy of this Technical Journal, first check for the latest online version.**

**DESCRIPTION:**

Volvo Cars of North America, LLC (Volvo) has decided to conduct a voluntary safety recall on certain model year 2012 S60 and XC60 vehicles.

An incorrect mixture of underbody coating, in combination with over-application, can result in rigid, icicle-like areas of underbody coating hanging from the undercarriage of the vehicle. If this condition is present in the location of the fuel lines, the underbody coating may penetrate the fuel lines resulting in fuel leakage.

The corrective action is to inspect all eligible vehicles, and if excessive under body coating is found in the fuel line area, it will be removed. If the fuel lines are damaged, they will be replaced.

**SERVICE:**

Follow inspection/repair instructions in attachment.

---

**To view TJ attachment continue to next page:**

# Volvo Car Customer Service

TJ Instruction

TJ No26058

Date

May 2012  
Issue 01

Title

Recall 251 Inspect Fuel lines for Contact with Underbody coating

Materials*	Quantity	Part No.
Fuel rail	1	31303564
Plastic pipe	1	31336649
Feed line	1	31303201
Plastic pipe	1	31277380
Plastic pipe	1	31277381

\* Note: Very few vehicles will require a rail replacement- Do not order a replacement line with out first confirming the need of one.

1.

---

**Note!** Some variation in the illustrations may occur, but the essential information is always correct

---

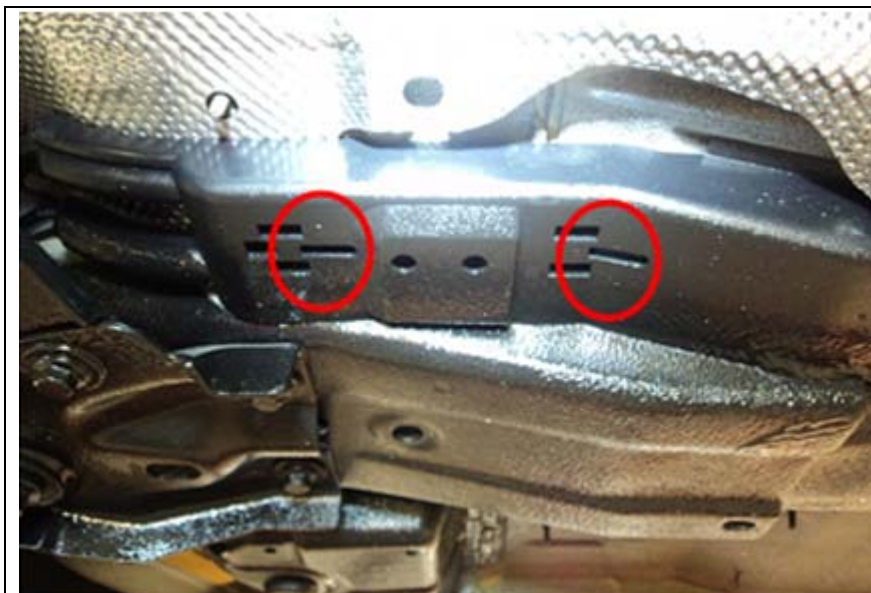
## Inspection

2.



Location of conflict area under fuel rail.

3.



Location of the two yellow clips in fuel rail.

4.



Loosen the two yellow clips in fuel rail by pulling backwards.

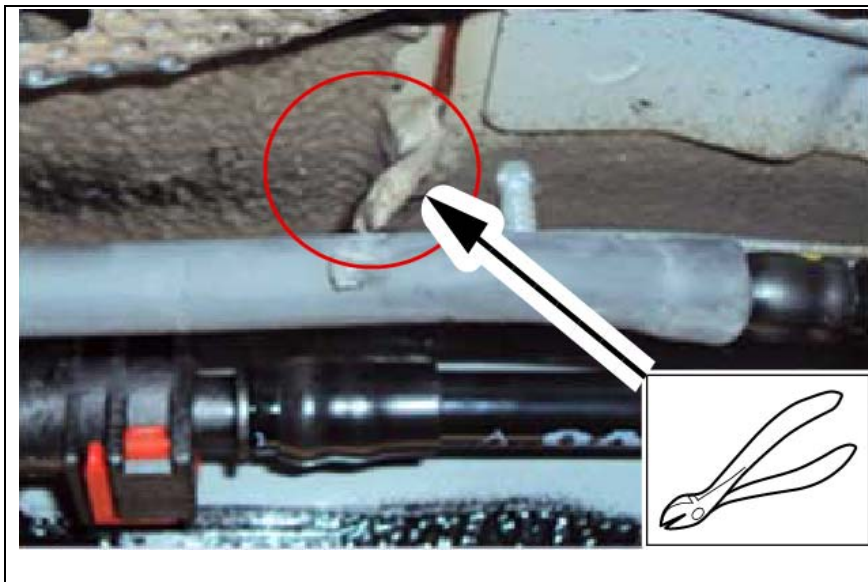
Use: Screwdriver.



**Pull down fuel rail.**

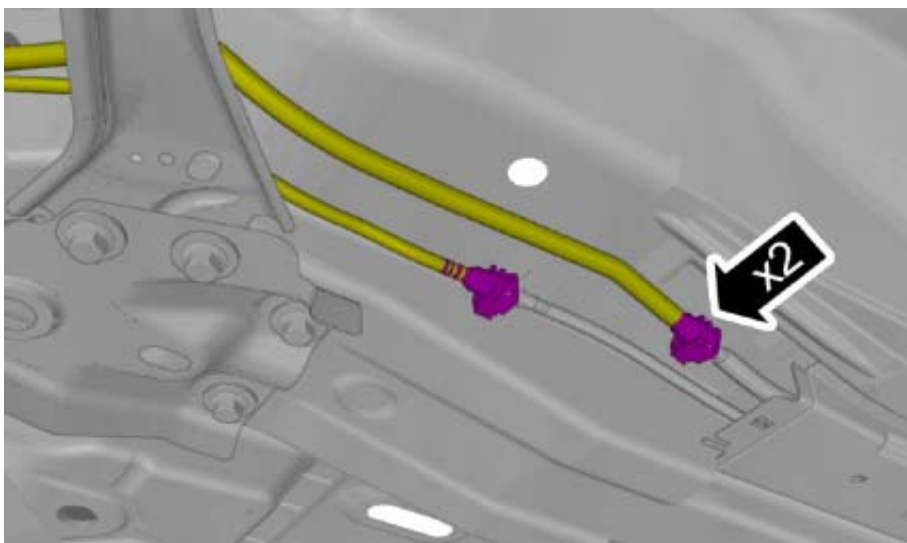


**Check for excess body coating.  
If the fuel pipes are in conflict with  
the stalactites, the fuel rail has to be  
replaced.**



Not OK

Cut away any contact with fuel rail.



Warning!

Be prepared to collect escaping fuel.

Remove old line and reinstall new one in reverse order.

