



Notice: Defect Information Notice

Subject: Liftgate Battery Box Mounting Inspection and Repair Procedures

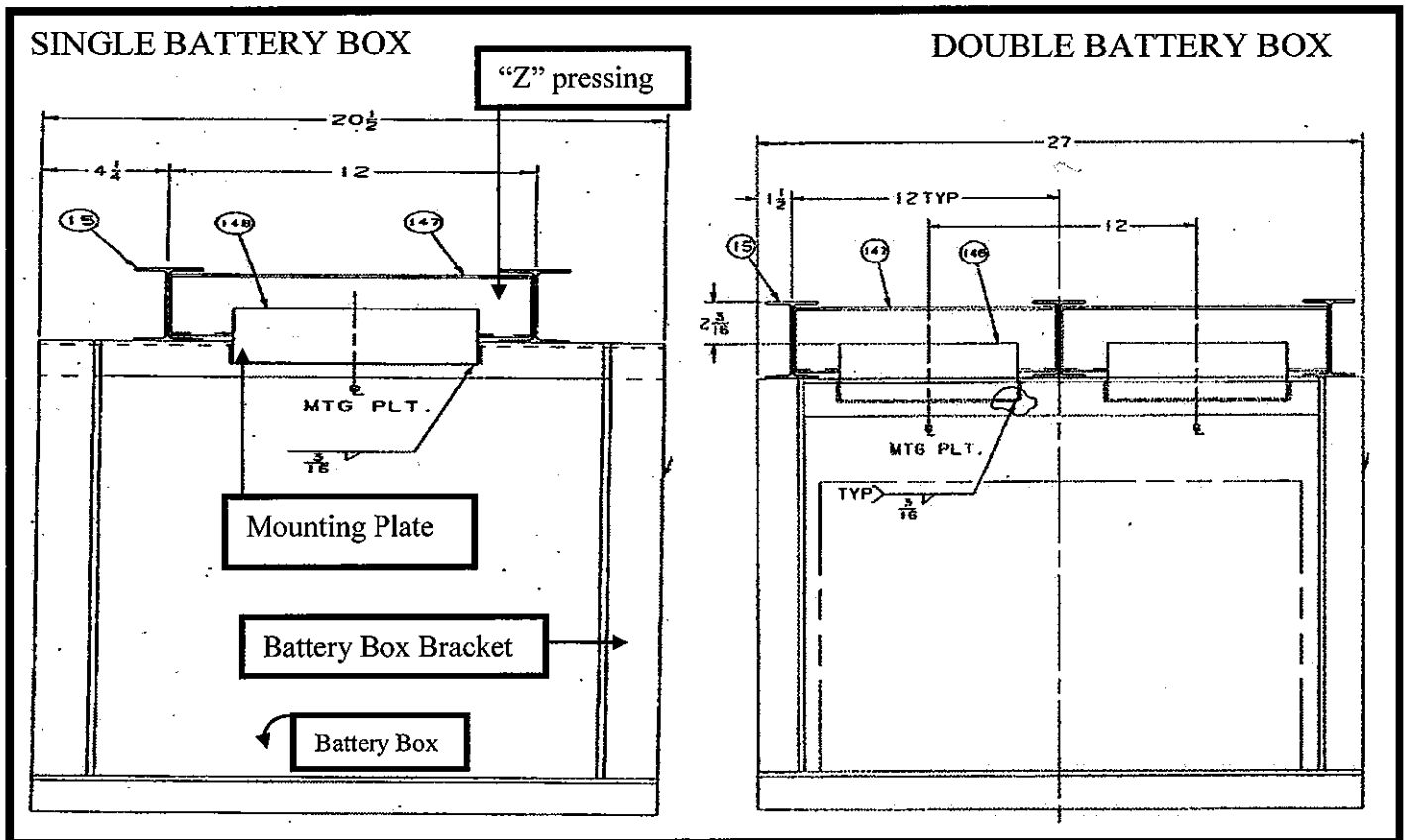
Reference No: 357309

Issue Date: January 5, 2012

This notice is sent to you in accordance with the requirements of the National Traffic and Motor Safety Act. Utility has decided that a defect exist with certain liftgate mountings for single and double battery boxes. Utility installed incorrect mounting plates to the "Z" shaped pressings and the battery box bracket. Below are instructions and examples of the correct installation procedures.

Inspection: Visually inspect battery box mounting plates and identify that a 3" tall x 8" wide mounting plate, mounted vertically, is in the correct installation position. Mounting plates not positioned correctly can result in the loss of the battery box over the road. All trailers should be inspected and repaired as soon as possible. If you see anything other than what is shown below, perform the repair procedure.

Examples:



Labor Allowance:

*Allowable labor hours: 2 hours for a single battery box and 3 hours for a double battery box

Claim Requirements: Utility will accept claims via the WCS with the following information.

*Contact UTM for authorization at 800-423-6591 prior to beginning the repair.

*Pictures of the incorrect style mounting plate assembly showing the single or double battery box.

*WCS required data

*Include: Ref #: 357309 on the claim

*The name of the liftgate manufacturer

*Total parts and labor required to perform the work, not to exceed the labor allowance.

*Pictures of the completed repair

Note: Failure to provide the complete requirements will delay processing of the claim.

***The repair work must be completed at a UTM dealership.

Communication: Any questions regarding this inspection or repair procedure should be directed to Utility's Field Service Department at 800-423-6591.