



Vermeer
1210 Vermeer Road East
Plant 1 P.O. Box 200
Pella, IA 50219
Phone: (641) 628-3141
www.vermeer.com

Via Email: RMD.ODI@dot.gov

To: Defects and Recall Information Analysis Division
Associate Administrator for Safety Assurance
National Highway Traffic Safety Administration
400 7th Street, SW
Washington DC 20590

PART 573 Defect and Noncompliance Report

Report Date: September 19, 2012

On or about September 13, 2012, Vermeer Manufacturing Company, d/b/a Vermeer Corporation, determined that there is a defect which relates to motor vehicle safety with respect to certain motor vehicles listed below, and is furnishing notification to the National Highway Traffic Safety Administration in accordance with 49 CFR Part 573 Defect and Noncompliance Reports.

Fabricating Manufacturer:

Vermeer Manufacturing Company, d/b/a Vermeer Corporation
1210 Vermeer Road East
Pella, IA 50219

Telephone: 641-628-3141 **Fax:** 641-621-7739

Contact Name and Title: Lois Slings
Product Liability Risk Manager

Name and Title of Person Who Prepared Report: Tom Haley
Product Safety Engineering Manager

Signed: Tom Haley **Date:** SEPT. 19, 2012

I. Identify the Vehicle Models Involved in the Recall

Manufacturer's Identification Code: IK00-1738

PART 573 Defect and Noncompliance Report

Report Date: September 19, 2012

Vehicle Identification:

Make:	Vermeer	Model Years Involved:	2012-2013	
Model(s):	HG6000TX			
Production Dates:	Beginning:	7/20/2012	Ending:	8/21/2012
VIN Range:	Beginning:	1VR2390A8C1001005	Ending:	1VR2390A1D1001008
Vehicle Type:	Trailer – Dolly Kingpin Option on Horizontal Grinder			

Description which characterizes/distinguishes the recalled vehicles from those model vehicles not included in the recall: The VIN Range includes four units.

Identify the approximate percentage of the production of all the recalled models manufactured by your company between the inclusive dates of manufacture provided above, that the recalled model population represents. For example, if the recall involved Widgets equipped with certain items of equipment from January 1, 1996 through April 1, 1997, then what was the percentage of the recalled Widgets of all Widgets manufactured during that time period.

75%

II. Identify the Recall Population

Total Number of Vehicles Recalled Potentially containing the defect or noncompliance:

Model	Year	Number of Vehicles Potentially Involved
HG6000TX	2012	2
	2013	1

Total Number Potentially Affected by the Recall:

3

Approximate percentage of Total Number of Vehicles Estimated to actually contain the defect or noncompliance:

100%

Identify and describe how the recall population was determined, in particular how the recalled models were selected and the basis for the beginning and final dates of manufacture of the recalled vehicles: The specified units were identified from manufacturing and design records maintained by Vermeer Manufacturing Company as all having the same kingpin design.

III. Describe the Defect or Noncompliance

Describe the defect or noncompliance. The description should address the nature and physical location of the defect or noncompliance. Illustrations should be provided as appropriate.

- Model HG6000TX horizontal grinder units, S/N 1005-1008, were equipped with an optional Weldment-Hitch Assembly, Item number 163701081 (Exhibit A) that the kingpin would be attached to. This optional Weldment-Hitch Assembly is used in conjunction with the Vermeer DT6 Dolly Transport to convert a tracked horizontal grinder into a trailer. The P/N 163701088 Plate-Hitch Lower Side Bends (Exhibit B) was manufactured without the machining feature of 10.30" diameter by .13" deep for the kingpin.

Describe the cause(s) of the defect or noncompliance condition.

- Incorrect machining during the manufacturing process.

Describe the consequence(s) of the defect or noncompliance condition.

- The kingpin would be installed out of the acceptable range per the SAE guidelines.

Identify any warning which can (a) precede or (b) occur.

- (a) Excessive wear on the kingpin.

If the defect or noncompliance is in a component or assembly purchased from a supplier, identify the supplier by corporate name and address.

- Not applicable.

Identify the name and title of the chief executive officer or knowledgeable representative of the supplier.

- Not applicable.

IV. Provide the Chronology in Determining the Defect/Noncompliance

If the recall is for a defect, complete item 6, otherwise item 7.

PART 573 Defect and Noncompliance Report

Report Date: September 19, 2012

With respect to a defect, furnish a chronological summary (including dates) of all the principle events that were the basis for the determination of the defect. The summary should include, but not be limited to, the number of reports, accidents, injuries, fatalities, and warranty claims.

7-SEPT-2012 **First notification** – Vermeer manufacturing notified Environmental Engineering Manger about a potential issue with the Weldment-Hitch Assembly 163701081. The machining feature that dictates the height of the trailer kingpin on P/N 163701088 Plate-Hitch Lower Side Bends may not have been included on previous manufactured parts.

Engineering worked with Environmental Service Department to contact Vermeer dealers in the field to measure the height of the kingpin to verify if they were manufactured correctly or not. The first unit was measured and was found to be out of specification.

A “Go-No Go” gauge was ordered to verify manufacturing tolerances on the HG6000TX kingpin design.

10-SEPT-2012 A second unit was checked and was found to be out of specification.

12-SEPT-2012 The Environmental Engineering Department received the “Go-No Go” gauge to review manufactured units would meet specifications. The gauge was used to check a production fabricated weldment hitch assembly in inventory. It was determined based on this check that the units in the field would be out of the acceptable range.

Environmental Engineering Department contacted the kingpin vendor to discuss the manufacturing issue. The supplier indicated that the field units would exhibit excess wear on the kingpin or the fifth wheel of the tractor and that Vermeer should replace the field units with a properly manufactured kingpin.

13-SEPT-2012 Vermeer Product Safety Department met with Environmental Engineering Department to discuss the kingpin manufacturing issue. It was determined that Environmental Engineering would develop a field safety kit to replace the incorrectly installed kingpins.

With respect to a noncompliance, identify and provide the test results or other data (in chronological order and including dates) on which the noncompliance was determined.

- Not applicable.

Furnish a description of the manufacturer’s remedy for the defect or noncompliance. Clearly describe the differences between the recall condition and the remedy.

- Provide correctly manufactured P/N 163701081 to replace incorrectly manufactured Weldment-Hitch Assembly.

Clearly describe the distinguishing characteristics of the remedy component/assembly versus the recalled component/assembly.

- Dealers will be instructed to remove the incorrectly manufactured Weldment-Hitch Assembly P/N 163701081 and replace with a correctly manufactured part.

Identify and describe how and when the recall condition was corrected in production. If the production remedy was identical to the recall remedy in the field, so state. If the product was discontinued, so state.

- A “Go-No Go has been supplied to manufacturing to verify on future production units that the kingpin has been installed correctly.
- Correctly manufactured P/N 163701081 will be provided in the field kit.

VI. Identify the Recall Schedule

Furnish a schedule or agenda (with specific dates) for notification to other manufacturers, dealers/retailers, and purchasers. Please, identify any foreseeable problems with implementing the recall.

TBD: Complete development of field modification kit, including securing replacement parts and writing installation instructions.

TBD: Parts for field repair estimated arrival date.

TBD: Manufacturer will publish Service Bulletin and Kit Instructions to dealers introducing field modification kit via company-to-dealer website.

TBD: Manufacturer will provide listing of affected units in the dealer’s area via fax and/or email.

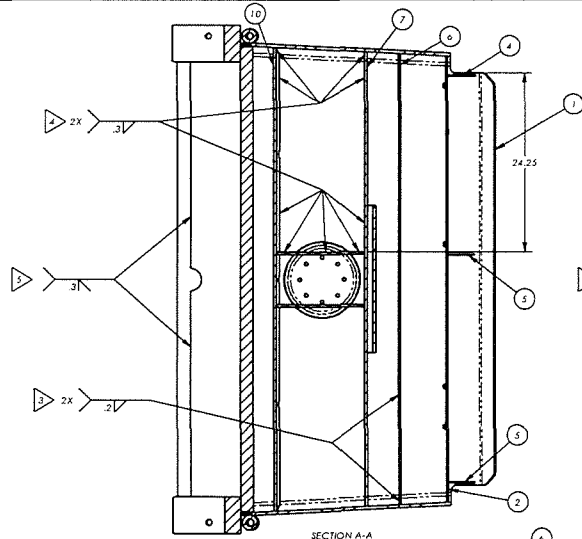
TBD: Manufacturer will notify owners of mandatory field modification via certified/registered US mail.

VII. Furnish Recall Communications

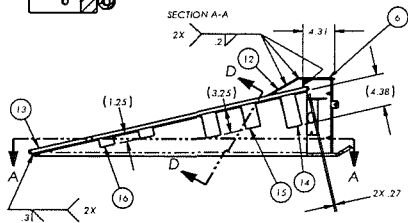
PART 573 Defect and Noncompliance Report

Report Date: September 19, 2012

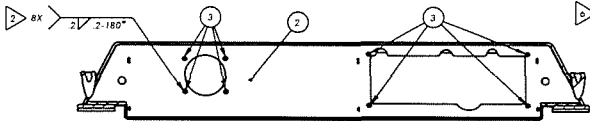
Furnish a final copy of all notices, bulletins, and other communications that relate directly to the defect or noncompliance and which are sent to more than one manufacturer, distributor, or purchaser. This includes all communications (including both original and follow-up) concerning this recall from the time your company determines the defect or noncompliance condition on, not just the initial notification. *A DRAFT copy of the notification documents should be submitted to this office by Fax (202-366-7882) for review prior to mailing.*



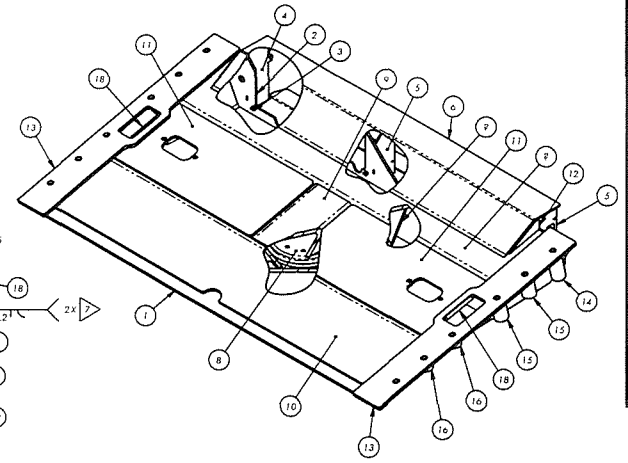
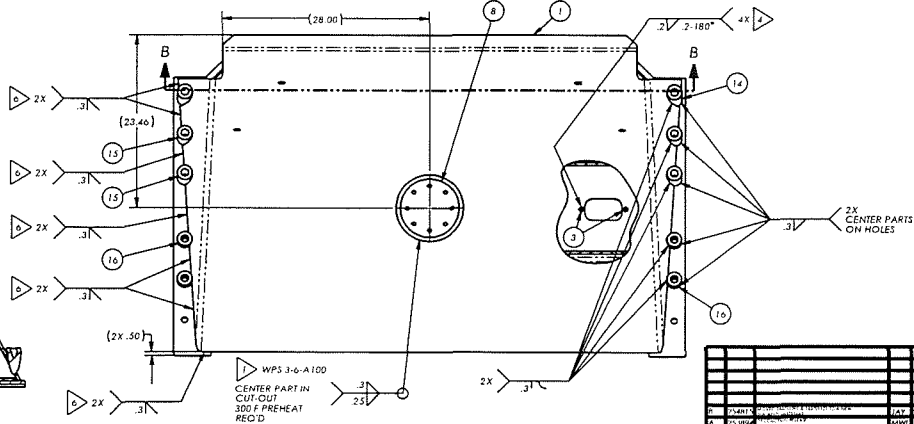
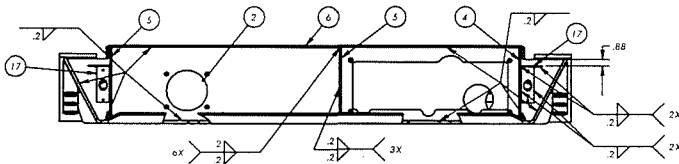
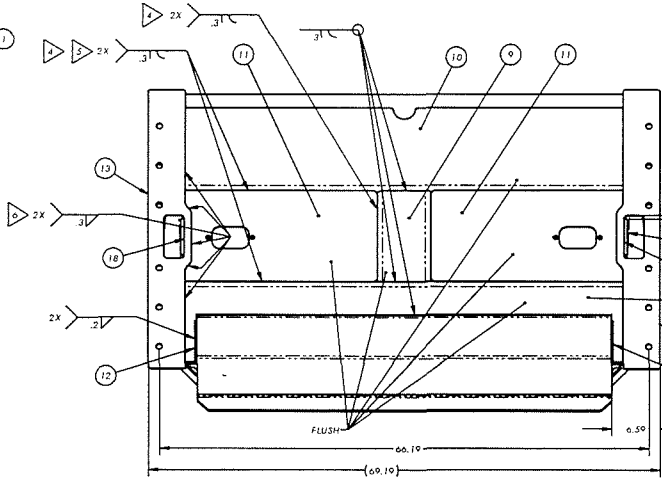
SECTION A-A



SECTION D-D



SECTION B-B



- 1 WELD 163663005 (8) TO 163701088 (1) FIRST.
- 2 WELD PRIOR TO PLACEMENT OF 163701088 (6)
- 3 WELD PRIOR TO THE PLACEMENT OF (7)
- 4 ENSURE ALL UNDERLYING WELDS ARE COMPLETE BEFORE PLACEMENT OF 2X 163701088 (11)
- 5 WELD PRIOR TO THE PLACEMENT OF 2X 163701092 (13)
- 6 ENSURE 2X 163701092 (13) ARE PARALLEL AND FLAT WITH EACH OTHER.
- 7 WELD BEAD AND 163683008 (16) MUST BE FLUSH OR BELOW 163701092 (13)

REQ'D	ITEM NUMBER	DESCRIPTION	NUM
1	163701088	PLATE-HITCH LOWER SIDE BENDS	1
1	163701085	PLATE-GLAD HAND MOUNT	2
1	40063013	NUIT-WELDED 36 TO PIPWHS	3
1	163671325	PLATE - GLAD HAND PROTECTION	4
2	163701083	PLATE-GLAD HAND PROTECTION	5
1	163701086	PLATE-GLAD HAND TOP	6
1	163701643	WELDMENT - HITCH STRUCTURE	7
1	163663005	KING PIN - TYPE 65 - 2" - BACK PLATE	8
1	163701087	PLATE-KINGPIN CHANNEL SUPPORT	9
1	163701097	PLATE-HITCH SHORT	10
2	163701090	PLATE-HITCH MID COVER	11
2	163701084	PLATE-CAP	12
2	163701092	PLATE-MOUNTING HITCH	13
2	163701093	BOSS-SPACER LONG	14
4	163701094	BOSS-SPACER MEDIUM	15
4	163701096	BOSS-SPACER SHORT	16
2	163701250	PLATE - MARKER LIGHT MOUNT	17
2	163683008	BAR - EDGE GUARD	18

WPS 3-G-A100 CENTER PART IN CUT-OUT 300 F PREHEAT REQ'D		APPROXIMATE WEIGHT 766.0586C LB.
WELDMENT-HITCH ASSEMBLY		
163701081	DATE:	VERMEER

EXHIBIT A

