



Campaign Directive
Slider Door Catches for FMVSS 206 UPS

F9: 9F9B79 NHTSA ID: 11V-6

Transport Canada ID: N/A

GY8cW a Ybh03102510-D008EN

Situation: Certain work trucks do not comply with FMVSS 206, S4.2.1, which requires each sliding door system to be equipped with either a primary door latch system or a door latch system with a fully latched position and a door closer warning system.

Corrective Action Summary for Standard Catches: Replace forward door catches with 2-position catches.

Corrective Action Summary for Keyless Catches: Add a switch at the door catches to activate a door ajar light mounted on the dash panel.

Range of Units Affected: Aeromaster bodies with cab sliding doors manufactured between September 1, 2009 and December 22, 2011. Contact Utilimaster Warranty Department to verify chassis VIN.

This document describes the rework instructions for cab sliding door configuration:

2. Kit **23003462SK**, 2-position catch at BOTH cab doors across all chassis.



Campaign Directive Slider Door Catches for FMVSS 206

Tools Required:

- Drill with #11 (or 3/16"), 5/16", and 7/32" bits
- Drill stop set at 5/16"
- Standard ratchet and combination wrench sets
- Screw gun with #30 Torx[®] bit
- Rivet gun
- Torque wrench
- Heat gun

! CAUTION

Always wear safety glasses and other proper protective equipment (gloves, hearing protection, etc.) as appropriate to the process.

Kit #2 Secondary Catch on Both Cab Doors:

23003462SK KIT CATCH BOTH DOORS 2POS

Part Number	Description	Qty.
57235362-L0000	CATCH ASY SLDG DR 2 POS LH	(1)
57235362-R0000	CATCH ASY SLDG DR 2 POS RH	(1)
06937629	STIFFENER QTR POST ROTATION	(2)
11600208-014SS	RIVET SS 3/16	(12)
11000033	BOLT 1/4-20 x 1-1/4 HXHD CAP G5-Z	(4)
11600221	WASHER FLAT 1/4"	(4)
11008115	WASHER 1/4 LOCK	(4)
11300177	SCREW 1/4-20 x 3/4 TORX PN	(2)
11600998-05D16L	BOLT HEX FLG 5/16-18 x 1 GR8 DACROMET	(4)
11404065	NUT HEX 5/16-18 HX FL	(4)
T5427707D02R	TEMPLATE SLDR CATCH RH	(1)
T5427707D02L	TEMPLATE SLDR CATCH LH	(1)
03104479	DECAL SERVICED JOB CODE	(1)
03102510-D008EN	DOOR CATCH INSTAL INSTRUCTIONS	(1)



Campaign Directive Slider Door Catches for FMVSS 206

Procedure for 2-Position Catch (Kit 2)

1. Read and understand all the instructions before starting the repair.
2. Validate the VIN, chassis, and door configuration with the notification. If any of the information does NOT match, contact Utilimaster Corporation before starting work.
3. Verify kit number and application.

NOTE: This procedure describes replacing the door catch at one door. Repeat the process if there are two sliding cab doors.

4. Remove the Torx-head set screw.
5. Remove the steel door catch and discard.

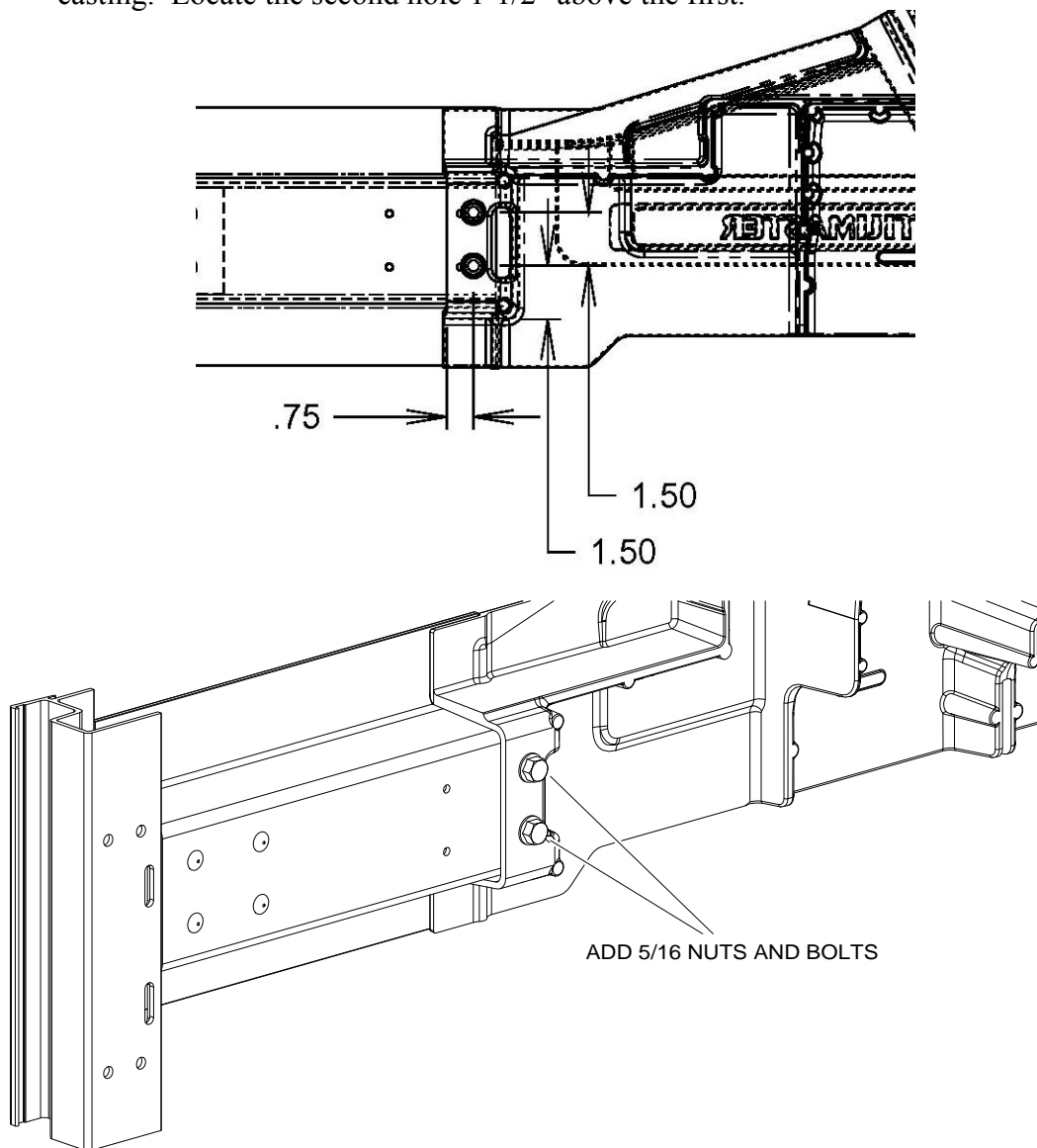


Discard original latch and fasteners

NOTICE

Set drill stop no deeper than 5/16" to avoid the wires inside the casting when drilling through quarter post casting.

- Set the drill stop to 5/16" and drill (2) 5/16" holes in the quarter post casting. Locate the bottom hole 3/4" from the rear edge and 1-1/2" from the bottom of the casting. Locate the second hole 1-1/2" above the first.



5/16" fasteners at the quarter panel casting

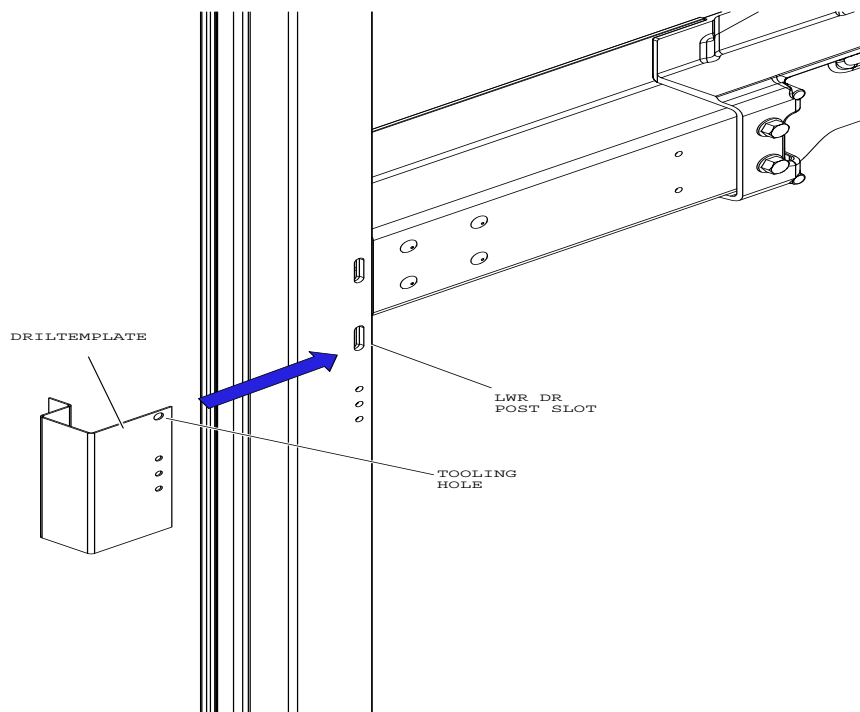
- Torque the bolts to 10–15 ft•lbs.

8. Start at the top and pull the door seal out of the forward doorpost to about 8" below the door catch.

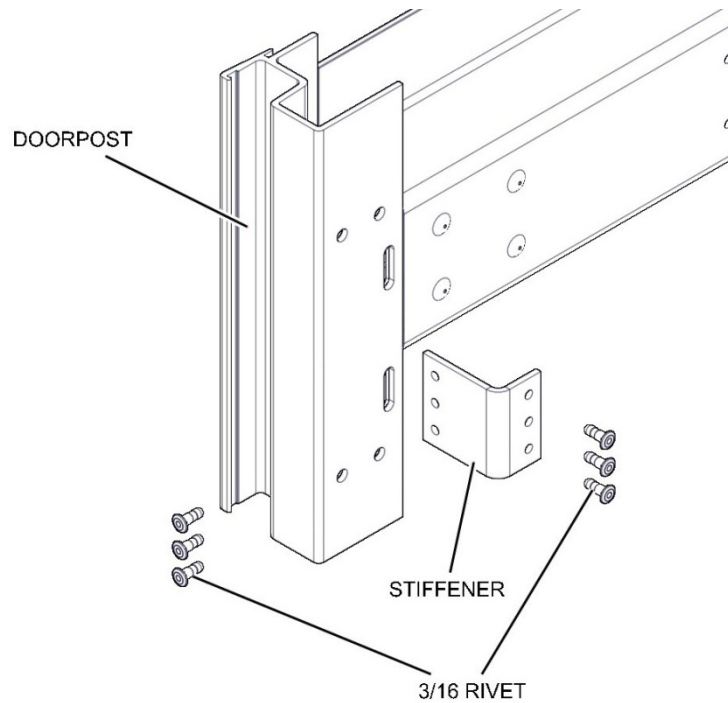


Remove the door seal

9. Align the (left-hand or right-hand) drill template with the lower slot in the forward doorpost with a pin or bolt.



Align drill template with slot in lower door post



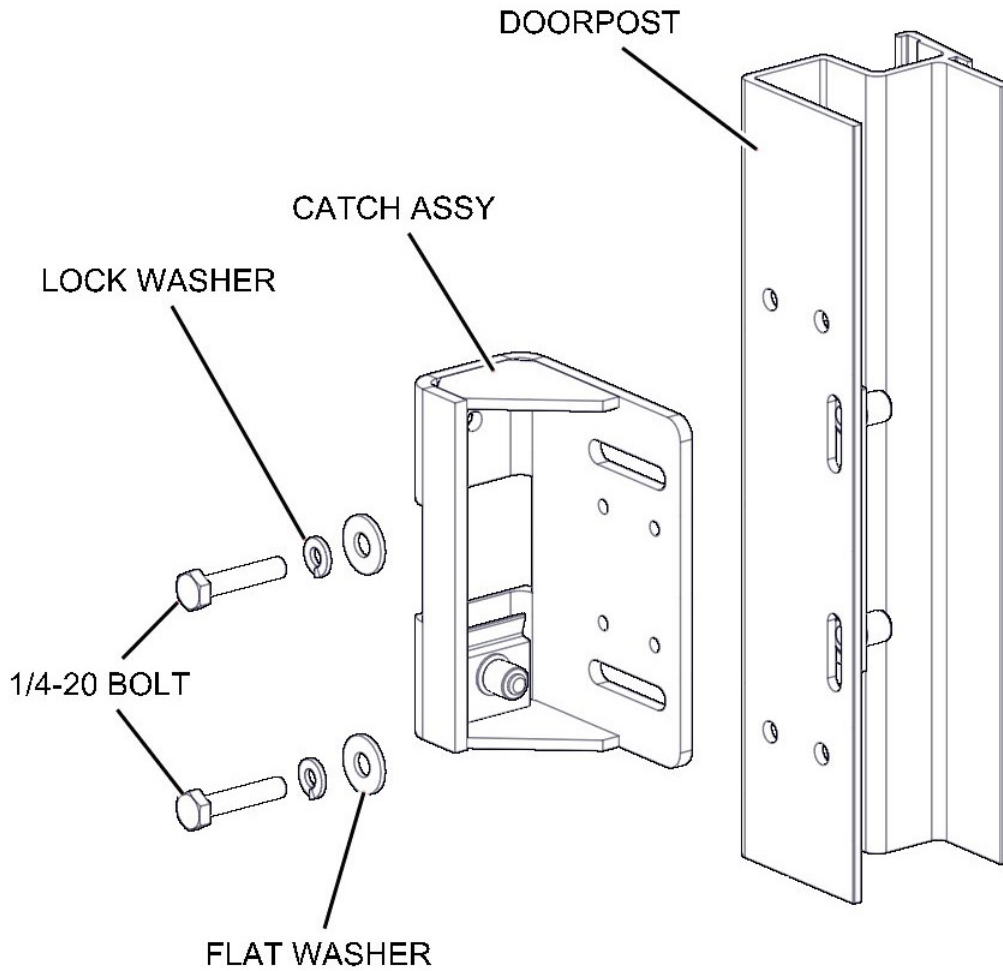
Doorpost stiffener set inside of forward door post

10. Use the template as a guide and mark the (6) holes.
11. Drill (6) 3/16" holes in the doorpost.
12. Secure the stiffener with (6) blind rivets.



Quarter post rotation stiffener installed

13. Replace doorpost seal.



Latch installation

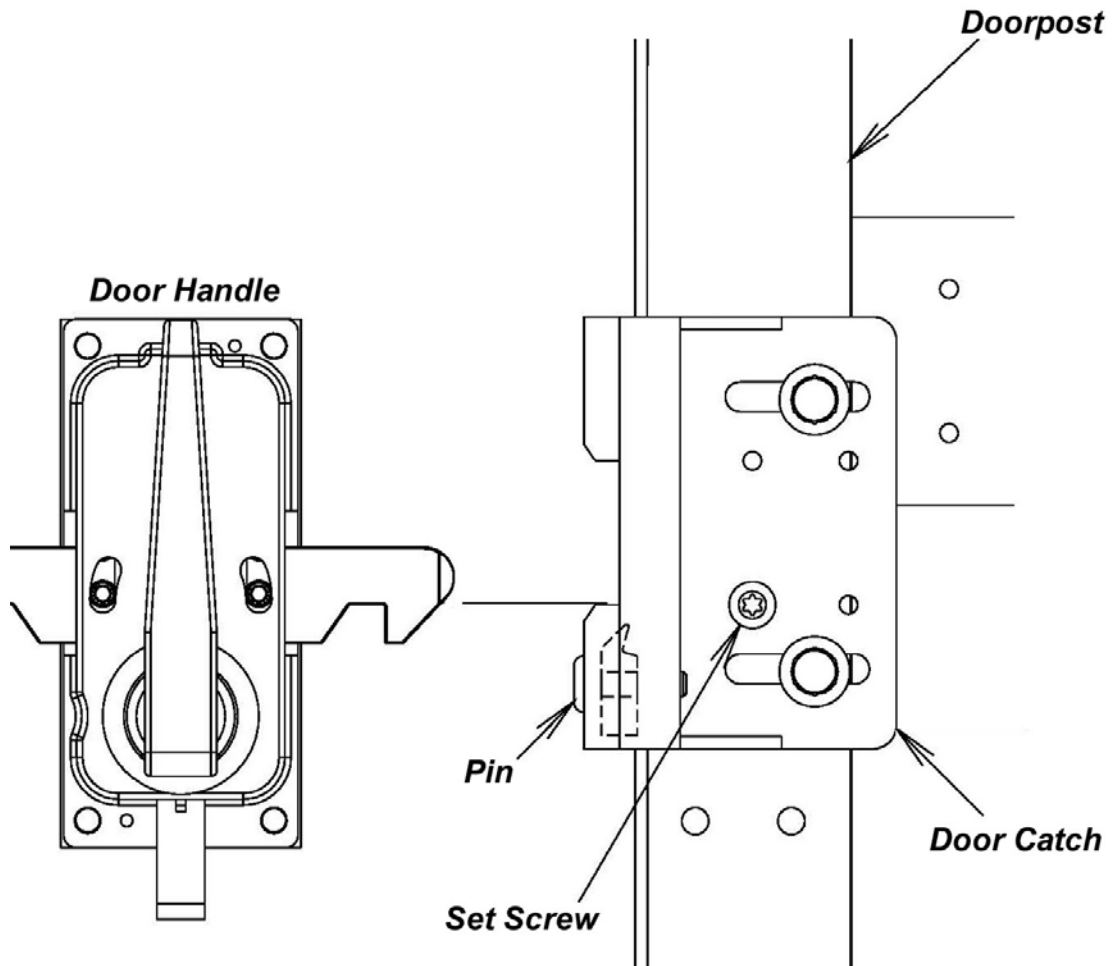
NOTICE

Do NOT use thread lock on the door catch fasteners.

14. Secure the catch (with the silver pin down) to the doorpost with flat washers, lock washers, and 1/4-20 bolts.



Silver pin indicates bottom of catch



2-position door catch configuration



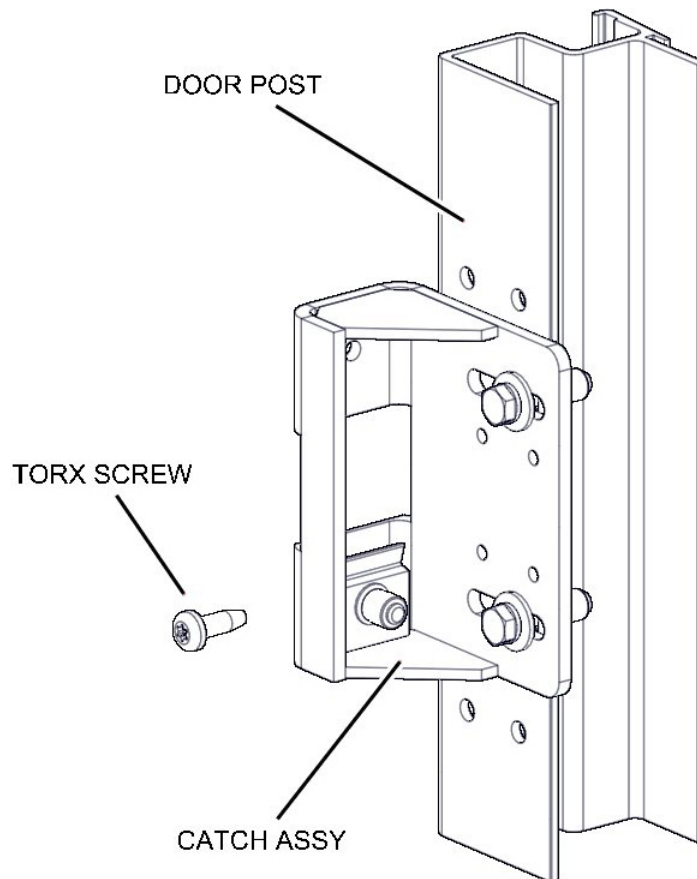
Campaign Directive Slider Door Catches for FMVSS 206

15. Close the door and adjust catch to engage the tongue of the door handle by 1/8" and tighten the catch bolts. Cycle the door (open and closed) several times and make any necessary adjustments.
16. Torque the bolts to 6.4–7.6 ft•lbs.

NOTICE

Do NOT reuse the original set screw hole.

17. Use (1) of the set screw holes in the catch as a guide to drill a 7/32" pilot hole into the doorpost.



Secure catch after adjusting the alignment

18. Secure a self-tapping Torx-head set screw in the hole.



Campaign Directive Slider Door Catches for FMVSS 206

19. Use the NHTSA ID number 11V-606 from this document to complete the Job Code on the SERVICED decal.
20. Adhere the decal to the upper right-hand corner of the driver's door pocket panel next to the bulkhead wall. Do NOT cover any previously applied decals.

