



---

# RECALL CAMPAIGN BULLETIN

---

Reference:

NTB11-106b

Date:

March 1, 2013

---

## VOLUNTARY SAFETY RECALL CAMPAIGN 2011 JUKE; AIR INLET TUBE

<p>This bulletin has been amended. Step 2 on page 5 has been changed. Please discard previous versions of this bulletin.</p>
--

**CAMPAIGN I.D. #:** R1114

**NHTSA #:** 11V-583

**APPLIED VEHICLE:** 2011 Juke (F15)

### INTRODUCTION

Nissan is conducting a voluntary service campaign on certain 2011 Nissan Juke vehicles to replace an engine air inlet tube. There is no charge to the customer for parts and labor.

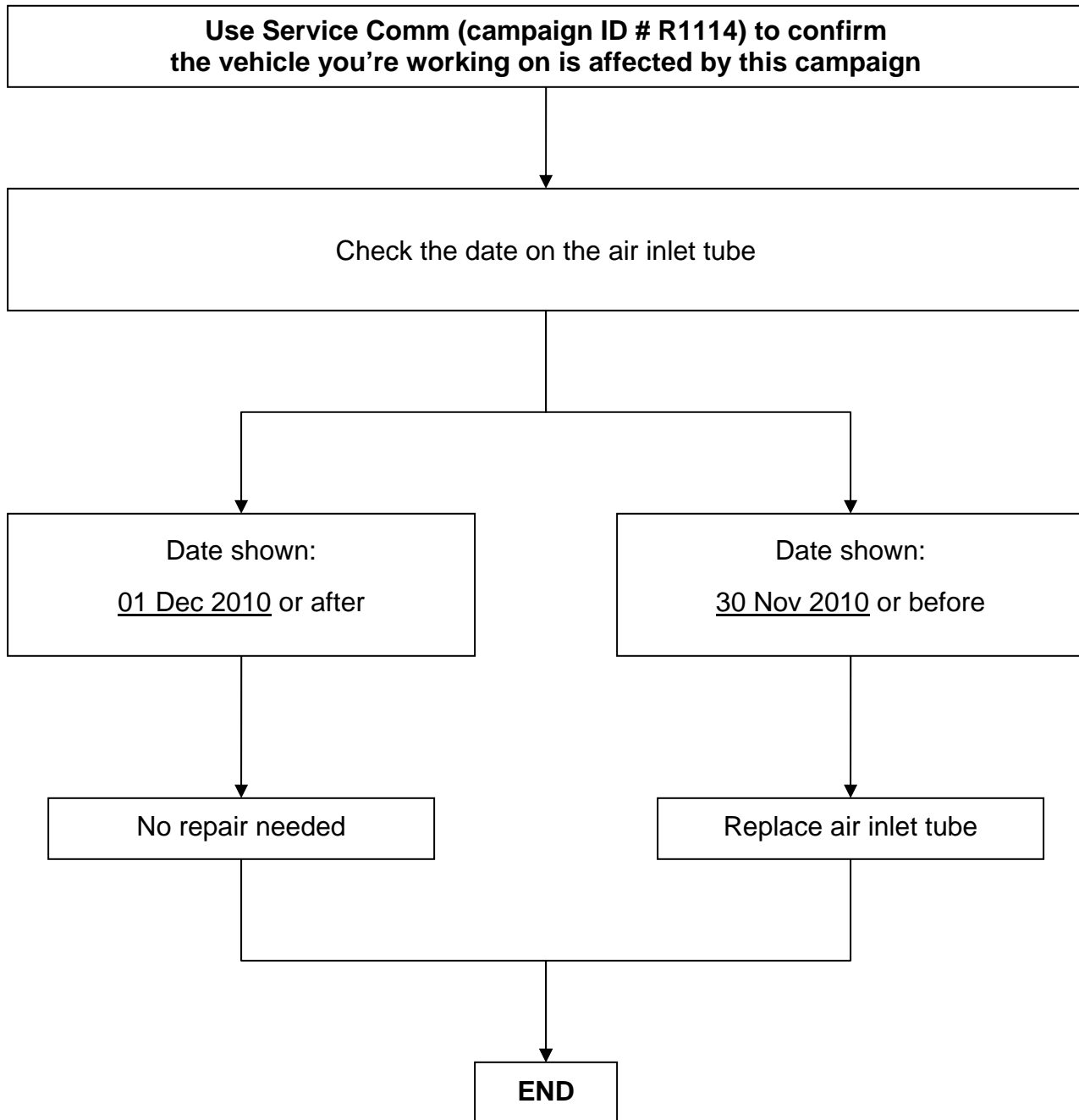
### IDENTIFICATION NUMBER

Nissan has assigned identification number R1114 to this campaign. This number must appear on all communications and documentation of any nature dealing with this campaign.

### DEALER RESPONSIBILITY

It is the dealer's responsibility to check Service Comm for the campaign status on each vehicle falling within the range of this voluntary safety recall which for any reason enters the service department. This includes vehicles purchased from private parties or presented by transient (tourist) owners and vehicles in a dealer's inventory. **Federal law requires that new vehicles in dealer inventory which are the subject of a safety recall must be corrected prior to sale. Failure to do so can result in civil penalties by the National Highway Traffic Safety Administration.** While federal law applies only to new vehicles, Nissan strongly encourages dealers to correct any used vehicles in their inventory before they are retailed.

## REPAIR OVERVIEW



## SERVICE PROCEDURE

1. Carefully snap loose and remove the engine cover.

2. Check the date on the air inlet tube.

**NOTE:** If the date is not painted on the inlet tube in this location, go to the secondary location on the next page.

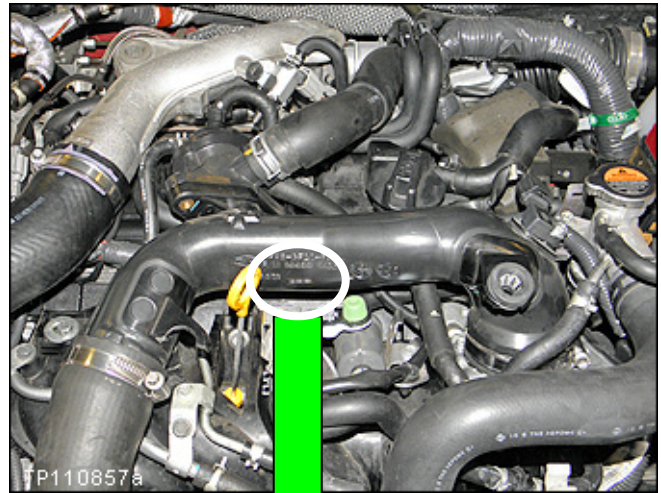


Figure 1

### **OK:**

- Date of 01 Dec 2010 or after
- No repair needed.

### **NG:**

- Date of 30 Nov 2010 or before
- Replace air inlet tube 1 – continue with the procedure on page 5.



Figure 2

Secondary location for date

- Date is printed directly underneath the intake side of the air inlet tube.
- Use a light and a mirror to locate and read the date.

**NOTE:** The date will appear backwards in the mirror.

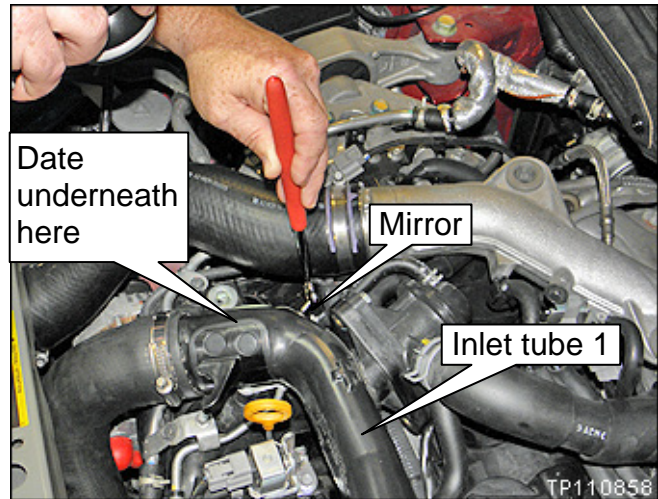


Figure 3

**OK:**

- Date of 01 Dec 2010 or after.
- No repair needed.

**NG:**

- Date of 30 Nov 2010 or before.
- Replace air inlet tube 1 – continue with the procedure on page 5.

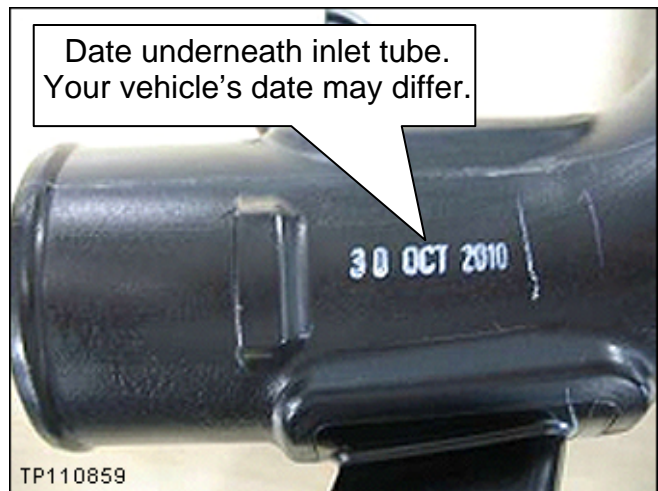


Figure 4

## Replace Air Inlet Tube 1 (#1 in Figure 5)

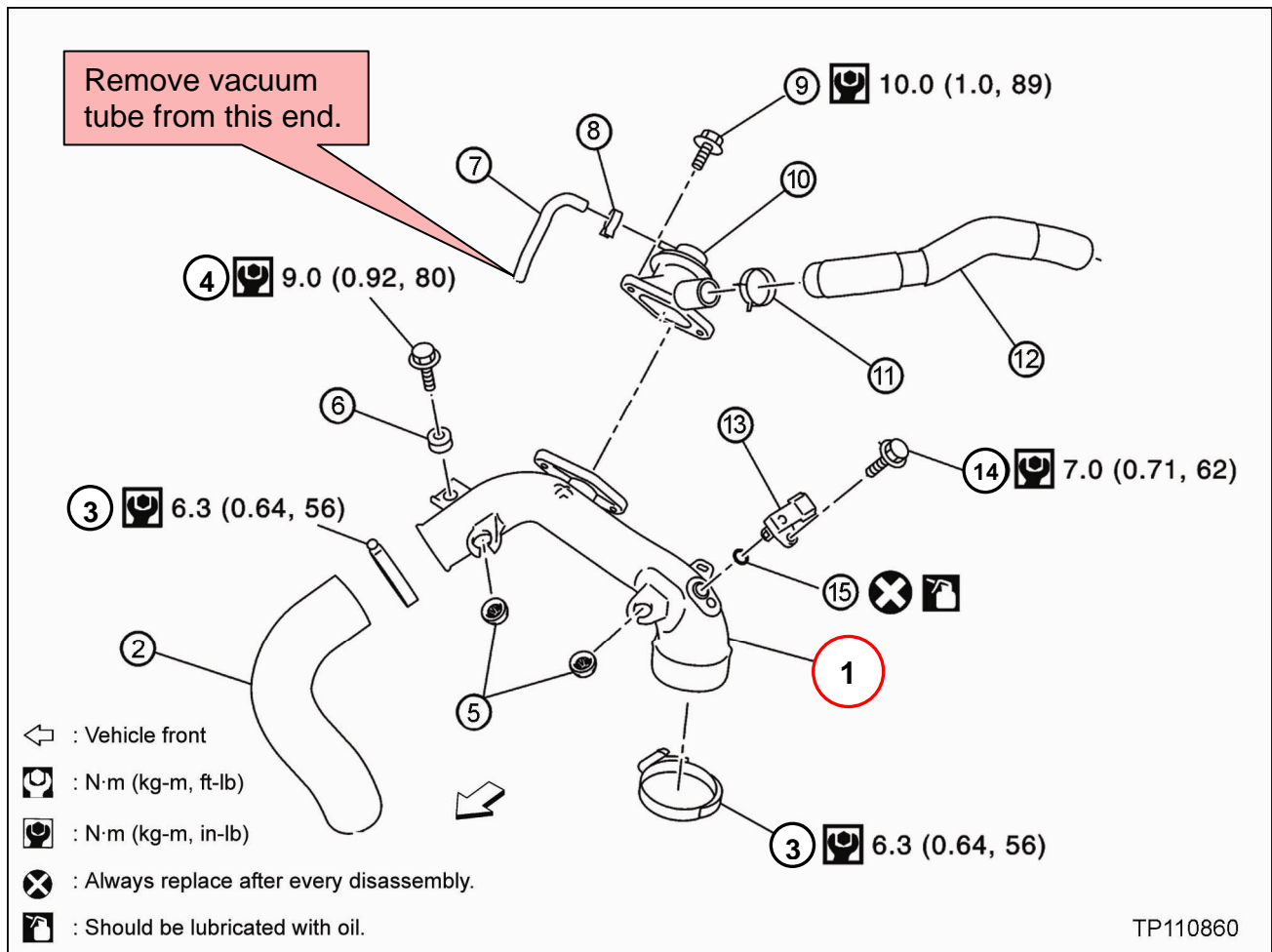


Figure 5

- |                               |                            |                               |
|-------------------------------|----------------------------|-------------------------------|
| 1. Air inlet tube 1           | 2. Air inlet hose 1        | 3. Clamp                      |
| 4. Bolt (inlet tube mount)    | 5. Mounting rubber (cover) | 6. Grommet                    |
| 7. Vacuum hose                | 8. Clamp                   | 9. Bolt (recirculation valve) |
| 10. Recirculation valve       | 11. Clamp                  | 12. Air inlet hose            |
| 13. Turbocharger boost sensor | 14. Bolt (boost Sensor)    | 15. O-ring (boost sensor)     |

**NOTE:** Use Figure 5 as a reference while performing steps 1-8 for air inlet tube replacement.

- Loosen both clamps (#3), one at each end of inlet tube 1.
- Disconnect the recirculation valve vacuum hose (#7) from the metal pipe end.

**CAUTION:** Do not attempt to disconnect the vacuum hose from the recirculation valve side.

3. Disconnect the air inlet hose (#12):
  - a. Disengage the clamp (#11).
  - b. Disconnect the air inlet hose (#12).
4. Disconnect the electrical connector from the turbocharger boost sensor (#13).
5. Remove the air inlet tube 1 mounting bolt (# 4).
6. Remove the air inlet tube 1 (#1) and place it on a work bench.

**CAUTION:** After removal of the air inlet tube 1, cover the throttle valve opening to prevent dust or debris from entering.

7. Swap the following parts from the old air inlet tube 1 to the new air inlet tube 1:
  - Turbocharger boost sensor (#13)
    - Make sure to use a new O-ring (#15).
    - Make sure to apply a suitable lubricant to the new O-ring.
  - Recirculation valve (#10)
    - Remove two bolts (#9).
    - Make sure to use a new gasket.
    - Make sure to use the correct torque when installing the bolts.
  - Mounting rubber (#5)
  - Grommet (#6)
8. Install the new air inlet tube 1 in reverse order of removing the old air inlet tube 1.
  - Make sure to use the correct torque for bolts and clamps (see Figure 5).
9. Render the old air inlet tube unusable by drilling a hole in the middle of the tube.

**PARTS INFORMATION**

<b>DESCRIPTION</b>	<b>P/N</b>	<b>QUANTITY</b>
Air Inlet Tube 1	14460 – 1KC0C	1
Gasket (for recirculation valve)	14489 – 1KC0A	1
O-ring (for turbocharger boost sensor)	22131 – 1KC0A	1

**CLAIMS INFORMATION**

Submit a Campaign (CM) line claim using the following claims coding:

<b>Campaign (CM) I.D #</b>	<b>DESCRIPTION</b>	<b>OP CODE</b>	<b>FRT</b>
R1114	Air Inlet Tube – Inspect Only	R11140	0.2 hrs
	Air Inlet Tube – Inspect and Replace	R11141	0.3 hrs

## **OWNER LETTER**

Dear Nissan Juke Owner:

This notice is sent to you in accordance with the requirements of the National Traffic and Motor Vehicle Safety Act. Nissan has decided that a defect that relates to motor vehicle safety exists in some 2011 Model Year Nissan Juke vehicles. Our records indicate that you own or lease the Nissan vehicle identified by the VIN on the inside of this notice.

### **Reason for Recall**

In some of the affected vehicles, the turbocharger air inlet tube and boost sensor assembly may separate, causing a malfunction. If this occurs, the vehicle will go into "fail-safe" mode and the check engine warning lamp will illuminate. If the vehicle continues to be driven in this condition without being promptly serviced, it could eventually stall while idling increasing the risk of a crash.

### **What Nissan Will Do**

Your Nissan dealer will inspect, and if necessary, replace the air inlet tube. This service, free for parts and labor, should take less than an hour to complete, but your Nissan dealer may require your vehicle for a longer period of time based upon their work schedule.

### **What You Should Do**

Contact your Nissan dealer at your earliest convenience in order to arrange an appointment to have your vehicle repaired. If the check engine warning lamp is illuminated, please contact your dealer immediately. Please bring this notice with you when you keep your service appointment. Instructions have been sent to your Nissan dealer.

If you have additional questions you may contact the National Consumer Affairs Department, Nissan North America, Inc., P.O. Box 685003, Franklin, TN 37068-5003. The toll free number is 1-800-NISSAN1 (1-800-647-7261). You may also submit a complaint to the Administrator, National Highway Traffic Safety Administration, 1200 New Jersey Avenue, SE., Washington, DC 20590; or call the toll-free Vehicle Safety Hotline at 1-888-327-4236 (TTY: 1-800-424-9153); or go to <http://www.safercar.gov>.

**Federal law requires that any vehicle lessor receiving this recall notice must forward a copy of this notice to the lessee within ten days.**

Thank you for your cooperation. We are indeed sorry for any inconvenience this may cause you.