

CERTAIN 2010 AND 2011 MODEL YEAR FUSION AND MILAN VEHICLES EQUIPPED WITH STEEL WHEELS — WHEEL STUD AND REAR BRAKE DISC INSPECTION AND LUG NUT REPLACEMENT

OVERVIEW

Before demonstrating or delivering any of the vehicles involved in this recall, dealers are to:

- remove and discard all wheel lug nuts.
- inspect **ALL** four wheels for broken studs and replace as required.
- check each **REAR** brake disc wheel mounting surface for flatness and replace as required.
- install 20 redesigned lug nuts.

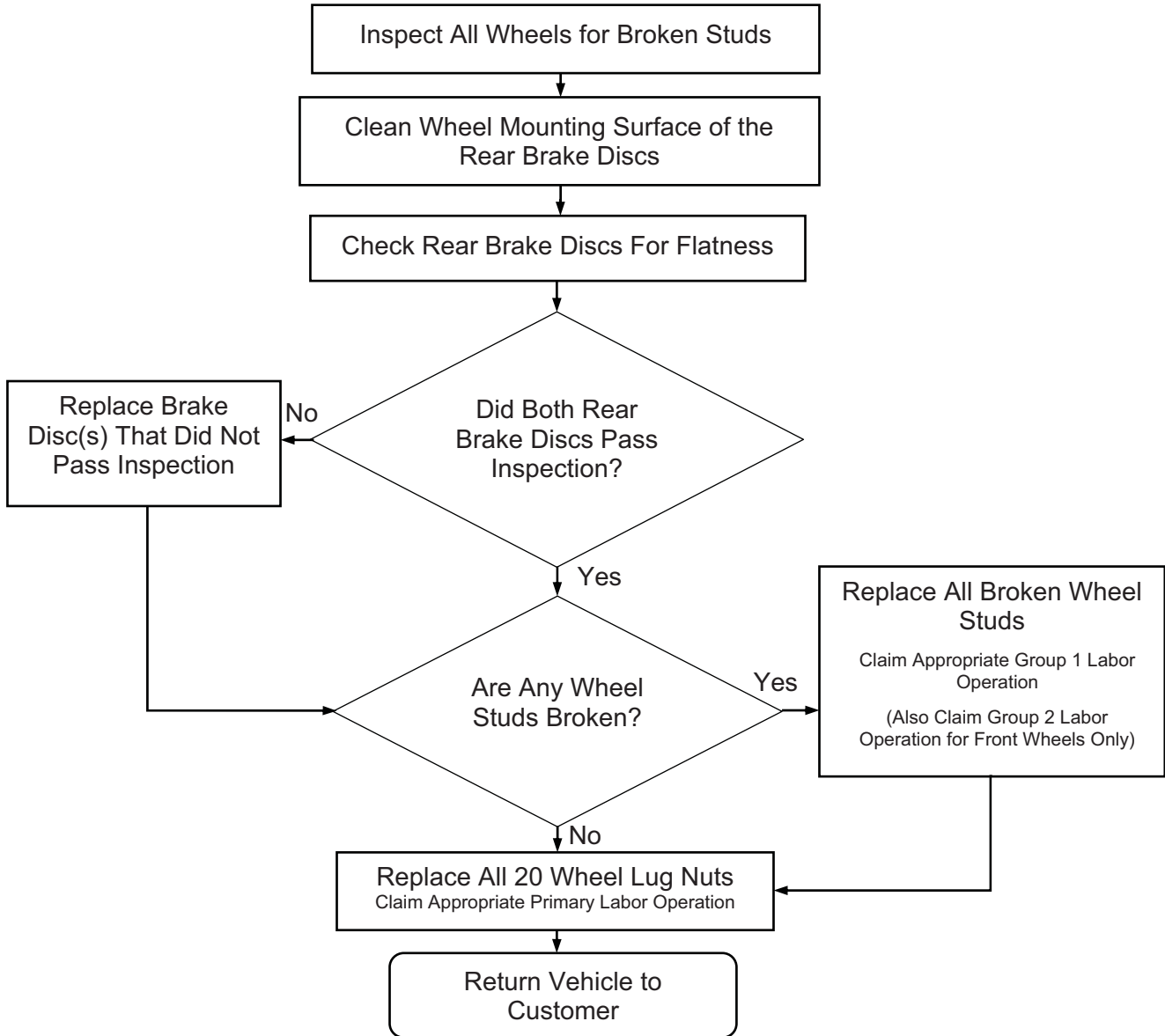
See Repair Flowchart on page 2 for repair process flow.

TABLE OF CONTENTS

REPAIR FLOWCHART	Page 2
WHEEL STUD AND REAR BRAKE DISC INSPECTION	Page 3
REAR BRAKE DISC REPLACEMENT	Page 4
WHEEL STUD REPLACEMENT	Page 4
LUG NUT REPLACEMENT	Page 6



REPAIR FLOWCHART



WHEEL STUD AND REAR BRAKE DISC INSPECTION

1. Remove the wheel and tire assemblies. For additional information, refer to Workshop Manual (WSM), Section 204-04.
 - Discard the lug nuts.
2. Visually inspect the front and rear hub assemblies for broken wheel studs.
3. Clean the wheel mounting surfaces of the rear brake discs with a suitable wire brush.
4. Position a straight edge tool (Central Tools CEN6429 or equivalent) flat against the rear brake disc wheel mounting surface, with the side of the straight edge tool next to (or touching) the wheel hub. See Figures 1 and 2.

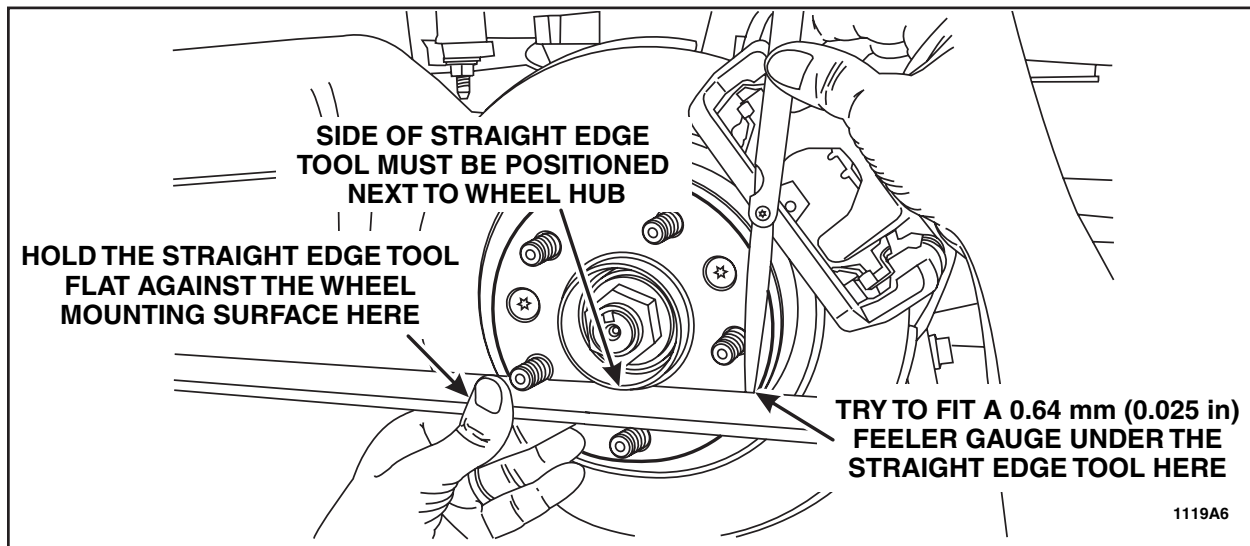


FIGURE 1

NOTE: Brake disc removed for clarity.

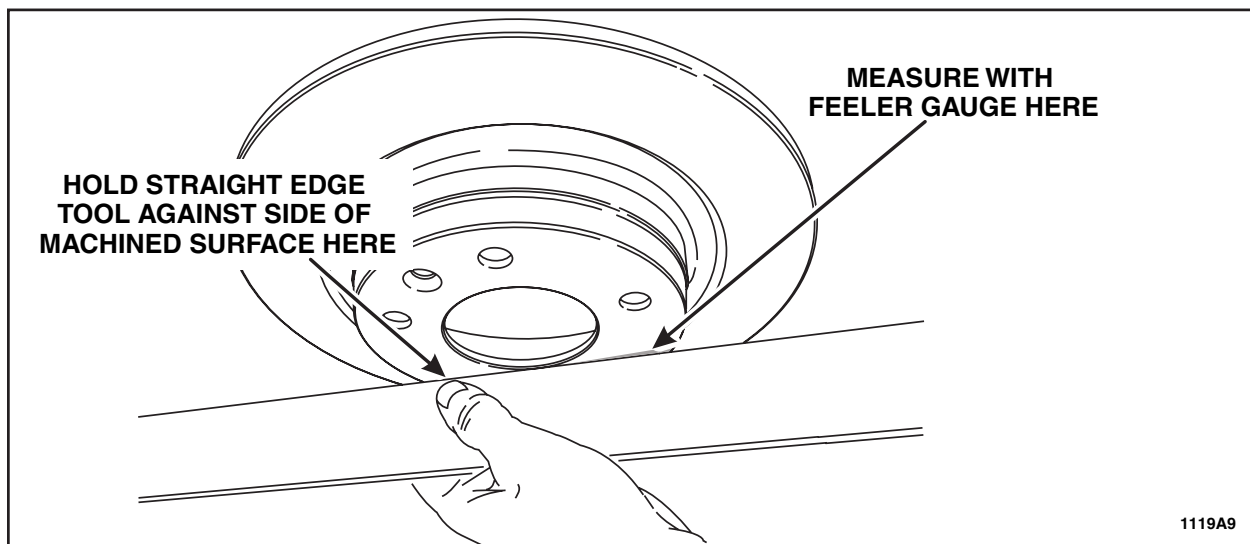


FIGURE 2



5. While holding the straight edge tool flat against the rear brake disc wheel mounting surface, use a feeler gauge to check for flatness. See Figures 1 and 2.

- Rear brake disc **PASSED** if a 0.64 mm (0.025 in) feeler gauge **CANNOT** be inserted between the brake disc wheel mounting surface and the straight edge tool.
- Rear brake disc **DID NOT PASS** if a 0.64 mm (0.025 in) feeler gauge **CAN** be inserted between the brake disc wheel mounting surface and the straight edge tool.

6. Inspection Results:

- If no broken wheel studs are found and both brake discs pass inspection, proceed to "Lug Nut Replacement" on page 6.
- If both brake discs pass inspection and one or more broken wheel studs are found, proceed to "Wheel Stud Replacement" on page 4.
- If either of the brake discs did not pass inspection, proceed to "Rear Brake Disc Replacement" on page 4.

REAR BRAKE DISC REPLACEMENT

1. Remove the rear brake disc(s) that did not pass inspection. For additional information, refer to WSM, Section 206-04.
2. Install *new* rear brake disc(s). For additional information, refer to WSM, Section 206-04.
 - If the vehicle did not have any broken wheel studs, proceed to "Lug Nut Replacement" on page 6.
 - If the vehicle has one or more broken wheel studs, proceed to "Wheel Stud Replacement" on page 4.

WHEEL STUD REPLACEMENT

1. Remove the brake disc(s) that have a broken stud(s). For additional information:
 - refer to WSM, Section 206-03 for front brake disc removal.
 - refer to WSM, Section 206-04 for rear brake disc removal.



Front Wheels Only

NOTE: In order to replace the front wheel studs a notch must first be ground into the front brake disc dust shield.

2. Use a 3/4" x 1-1/16" pointed grinding stone to grind a notch into the brake disc dust shield flush to the raised area of the hub to allow for wheel stud removal. See Figure 1.

NOTICE: To prevent loosening of the press fitted brake disc dust shield, only remove enough material to remove the wheel stud(s). If the brake disc dust shield is able to be moved or rotated after the grinding procedure, please call the Special Support Service Center.

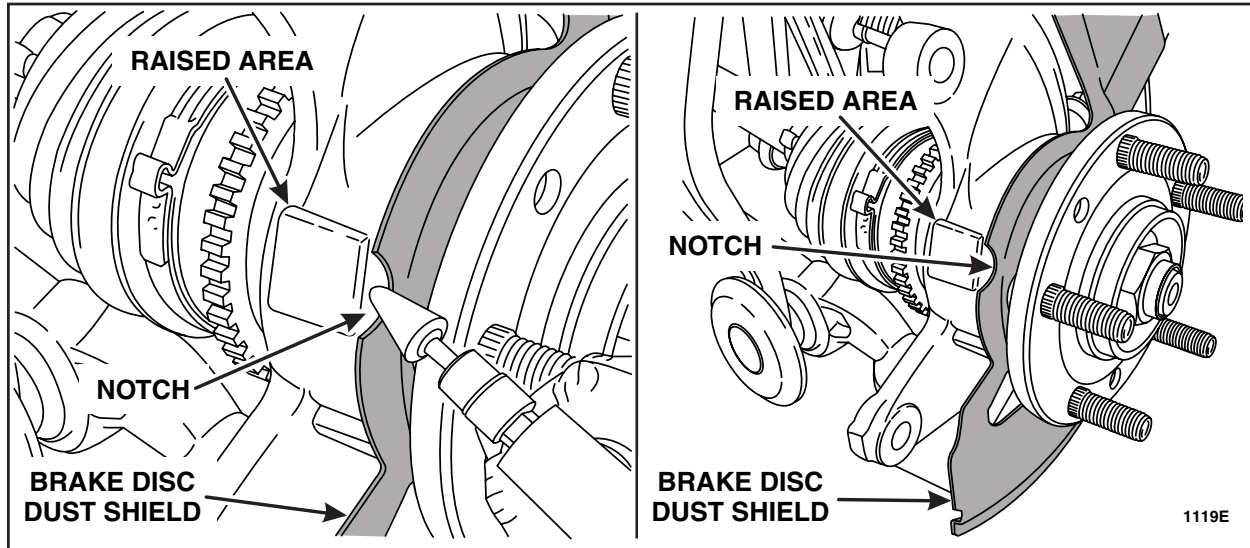


FIGURE 1

3. Apply PM-13-A to any bare metal area on the brake disc dust shield.

All Wheels

4. Using special tool 204-592 or equivalent remove all of the broken wheel studs from the wheel hub(s).
5. Using two large flat washers and a 12 X 1.50 nut, install the *new* stud(s) into the wheel hub. Seat each replaced wheel stud using 54-108 Nm (40-80 lb-ft) of torque on the nut.
 - Remove the nut and flat washers after the *new* wheel stud(s) are installed.
6. Install the previously removed brake disc(s). For additional information:
 - refer to WSM, Section 206-03 for front brake disc installation.
 - refer to WSM, Section 206-04 for rear brake disc installation.
7. Proceed to "Lug Nut Replacement" on Page 6.



LUG NUT REPLACEMENT

1. **NOTICE:** The redesigned lug nuts will have a matte finish where they contact the vehicle's wheels. See Figure 2. Only install redesigned lug nuts with the matte finish.

Using all 20 redesigned lug nuts, install the wheel and tire assemblies. For additional information, refer to WSM, Section 204-04.



FIGURE 2

