

## Safety Recall

**Subject: MERITOR FRONT AXLE WHEEL END NUT PACK INSPECTION**

**Date: April 9, 2012**

**Bulletin: RCB-012-11**

**Campaign #: M0230**

**Affected Models: Certain 2012 MY NE8J, NJ8J, NV8J models equipped with Meritor front axles.**

**Important: Verify on the Hino DCS Warranty System that the vehicle needs to have this work performed.**

**Condition:**

Certain suspect axles may have improperly assembled fastening hardware or nut locking features. This condition can lead to field performance issues, including wheel separation, which could then lead to loss of vehicle control, property damage, or personal injury.

**Subject Vehicles:**

Certain 2012MY NE8J, NJ8J, NV8J Hino Conventional Trucks, containing Meritor axles, assembled at the Williamstown, WV assembly plant.

**Before You Begin:**

*Read and understand all instructions and procedures before you begin. Read and observe all Caution and Warning safety alerts that precede these instructions while following these procedures. The alerts help to avoid damage to components, serious personal injury, or both.*

**!!! WARNING !!!**

***Park the vehicle on a level and solid surface***

***Apply the parking brake and confirm parking brake activation***

***Place wheel chocks in front and behind rear wheels.***

***Support the vehicle with safety stands.***

***DO NOT WORK UNDER A VEHICLE WITHOUT SAFETY STANDS IN PLACE.***

***Jacks can slip or fail, resulting in serious personal injury as well as damage to components. Confirm the engine is stopped, the starter switch is in the off (LOCK) position, and the key is removed.***

***Wear safety glasses to prevent eye injuries.***

## Safety Recall

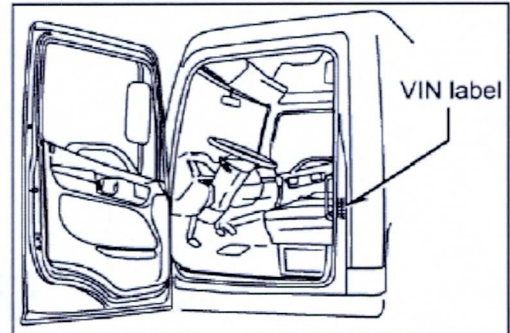
**Once Recall Is Completed**  
Complete a recall sticker and affix to the left door jam above the V.I.N. decal.



**HINO**  **TRUCKS**  
A Toyota Group Company

Campaign No.: \_\_\_\_\_  
Dealer code: \_\_\_\_\_  
Repair date: \_\_\_\_/\_\_\_\_/\_\_\_\_  
(MM/DD/YY)

**DO NOT REMOVE**

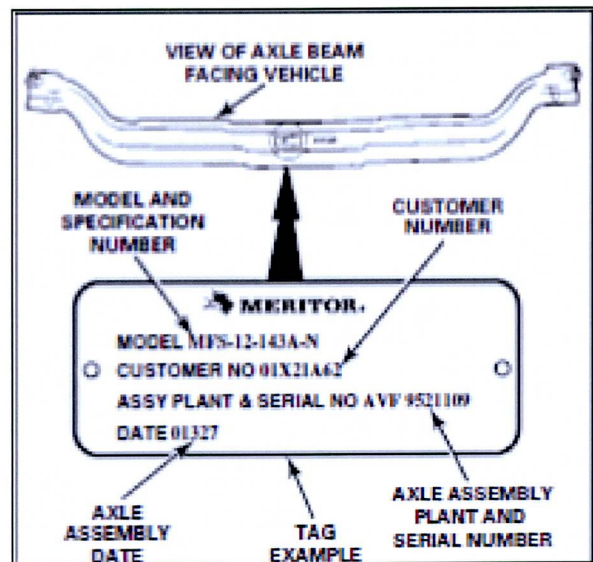


### INSPECTION PARTS:

PART NUMBER	DESCRIPTION	QUANTITY (Based On Axle)
2208C835	Hubcap Gasket (Front Axle_MFS_4 Bolt)	2
2208Y363	Hubcap Gasket (Front Axle_MFS_6 Bolt)	

### REPAIR PARTS:

Depending on your inspection results after disassembly, it may be necessary to replace wheel bearings, lock washers, lock rings and/or hub seals. Refer to your dealer's Hino Parts Catalog for specific part number information. Specific axle information may be needed to order parts and can be found using the Axle Identification Tag on the axle.



**NOTICE:** If you have any questions or concerns regarding parts, Meritor's Commercial Vehicle Aftermarket Services is also available at 1-(888)-725-9355.

## Safety Recall

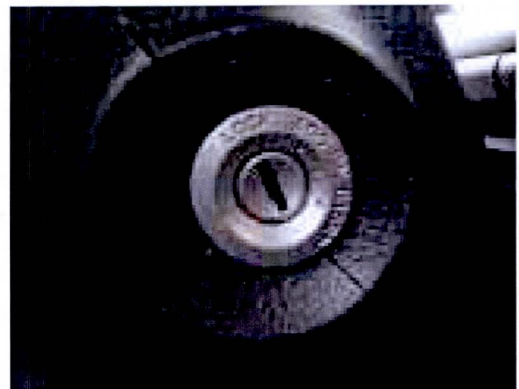
This bulletin contains three separate sections and each of the sections has numbered paragraphs:

- **FRONT AXLE (MFS) INSPECTION PROCEDURE**
- **FRONT AXLE (MFS) REASSEMBLY PROCEDURE**
- **FRONT AXLE (MFS) REPAIR PROCEDURE**

Depending upon the results of the **FRONT AXLE (MFS) INSPECTION PROCEDURE**, you may be directed to refer to one or both of the other sections.

### **FRONT AXLE (MFS) INSPECTION PROCEDURE:**

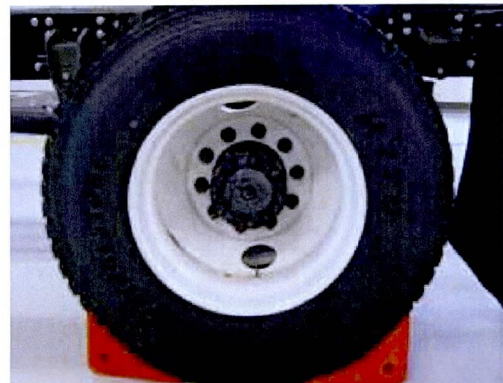
1. Park the vehicle on level ground.
2. Confirm the engine is stopped, the starter switch is in the off (LOCK) position, and the key is removed.



3. Apply the parking brake.



4. Chock the rear wheels.



## Safety Recall

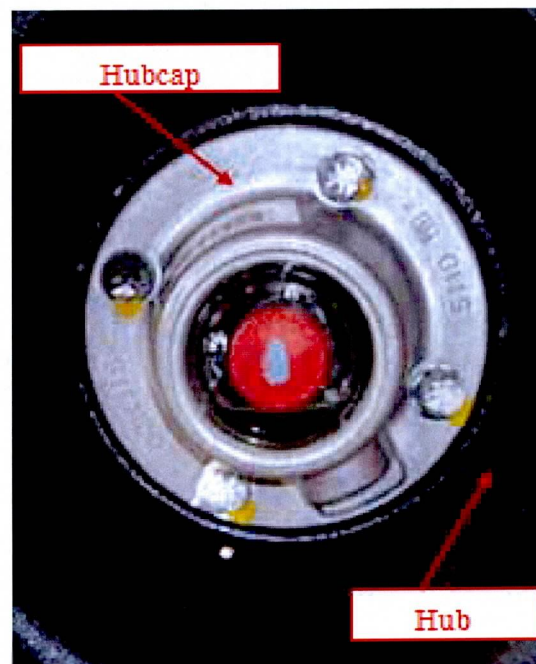
5. Raise the front of the vehicle until the front wheels are off the ground. Support the vehicle with safety stands.



6. Visually inspect the inner wheel bearing seal area on both the driver and passenger sides for evidence of a seal leak. Document your results.



7. While using the appropriate container to capture the lubricant, remove the front hubcap from the hub on both the driver and passenger sides. The number of hubcap bolts may vary depending on axle size.



## Safety Recall

8. Using a dial indicator, measure and record the wheel bearing end play for both the driver and passenger side wheel end. Does the wheel bearing end play fall within the end play specification?

**Wheel Bearing End Play Specification:**

0.001" - 0.005" (0.0254 - 0.0127 mm).

- Yes

Proceed to **STEP 9**.

- No

Proceed to the "Front Axle (MFS) Repair Procedure".



**NOTICE:** In order to properly disassemble, inspect and repair the front end axle wheel ends, in addition to the applicable Hino 2012MY Chassis Workshop Manual, you must also refer to and closely follow the Meritor Wheel-End Components Maintenance Manual MM-0409. These publications will contain the latest disassembly, inspection and reassembly procedures.

9. Visually inspect to confirm that the 4 components of the wheel bearing nut pack are installed on both the driver and passenger side wheel ends.

(A) - Wheel Bearing Adjusting Nut

(B) - Lock Ring

(C) - Tabbed or Solid Disc Lock Washer

(D) - Jam Nut

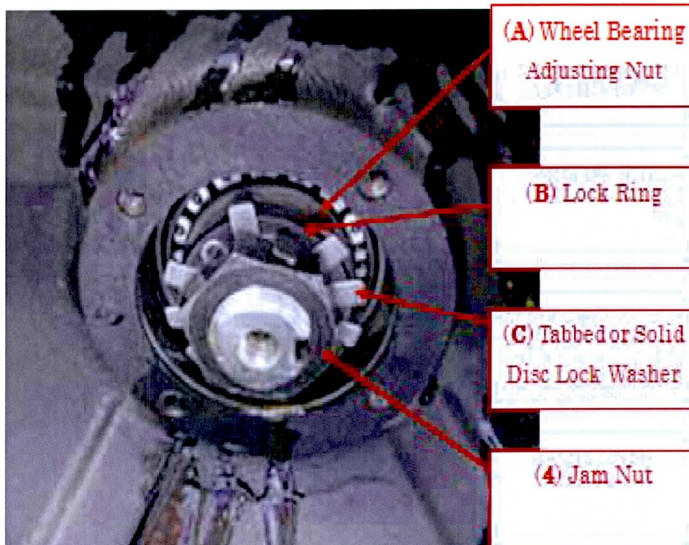
Are the 4 components installed on both the driver and passenger side wheel ends?

- Yes

Proceed to **STEP 10**.

- No

Proceed to the "Front Axle (MFS) Repair Procedure".



## Safety Recall

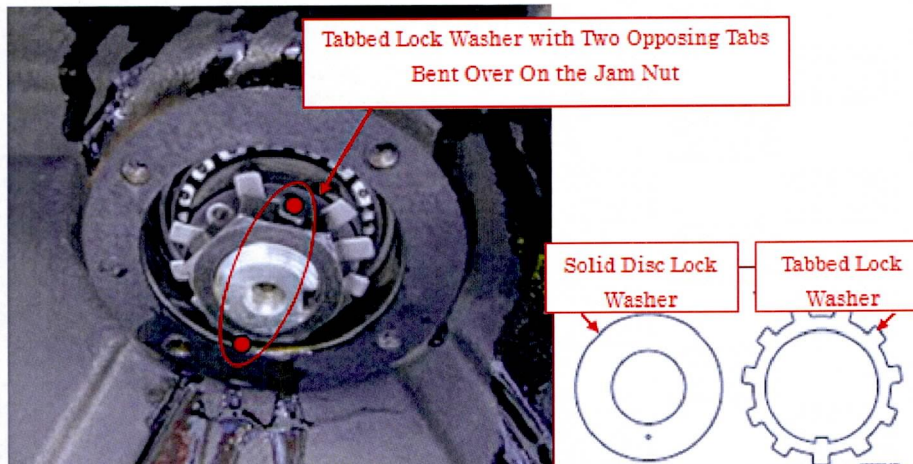
10. Inspect to confirm that tabbed lock washer has two opposing tabs that are bent over on the jam nut. In rare cases, the lock washer could be a solid disc type. If a solid disc lock washer is installed, one tab will need to be bent over on the jam nut. Is the locking tab correctly installed and properly bent down over the jam nut?

**- Yes**

No further inspection or repairs are required. Proceed to the “**Front Axle (MFS) Reassembly Procedure**”.

**- No**

Proceed to the “**Front Axle (MFS) Repair Procedure**”.



### **FRONT AXLE (MFS) REASSEMBLY PROCEDURE:**

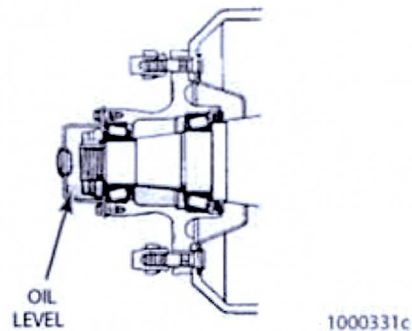
1. Using a new hubcap gasket, install both the driver and passenger side front hubcap. Tighten the bolts to the specified torque value.

**Specified Torque Valve:** 25 lb. ft.



## Safety Recall

2. Fill the driver and passenger side front wheel bearing hub assemblies. Refer to the 2012MY Hino Chassis Workshop Manual for the correct lubricant type and capacity.



3. Raise the front of the vehicle off the safety stands. Remove the safety stands and safety lower the vehicle to the ground.



4. The front axle inspection is complete. No further inspection or repairs are required. The vehicle can be returned back to the customer.

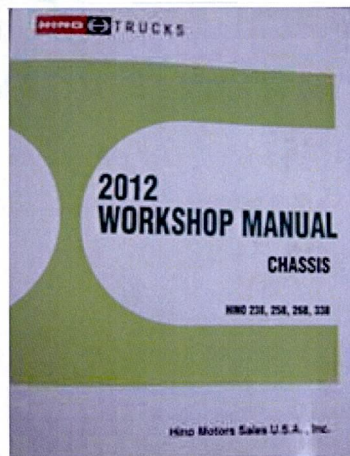
## Safety Recall

### **FRONT AXLE (MFS) REPAIR PROCEDURE:**

1. Prior to any further disassembly or inspection, you **MUST** contact OnTrac(Meritor) at 1-(866)-668-7221.

The results of the “**Front Axle (MFS) Inspection Procedure**” may require one or both of the front axle wheel ends to be disassembled, inspected and repaired. **In order to properly disassemble, inspect and repair the front end axle wheel ends, in addition to the applicable Hino 2012MY Chassis Workshop Manual, you must also refer to and closely follow the Meritor Wheel-End Components Maintenance Manual MM-0409. These publications will contain the latest disassembly, inspection and reassembly procedures.**

The Meritor MM-0409 Manual is available on the worldwide web at [www.meritor.com/customer/northamerica/od/default.aspx](http://www.meritor.com/customer/northamerica/od/default.aspx) .



**NOTICE:** *If you have any questions or concerns during disassembly, inspection, assembly or repair of the front axle, contact OnTrac for additional support.  
- Phone 1-(866)-668-7221*

## Safety Recall

2. Raise the front of the vehicle off the safety stands. Remove the safety stands and safety lower the vehicle to the ground.



3. The front axle inspection and repair is complete. No further inspection or repairs are required. The vehicle can be returned to the customer.

### **Claim Application:**

**NOTE: ONLY ONE LABOR OPERATION CODE CAN BE USED.**

**NOTE: The OnTrac authorization number must be listed in the claim text if wheel end replacement was required.**

Inspection (includes inspecting both wheel ends, no repairs)

- a) Campaign No.: M0230
- b) Labor Charge: 1.2
- c) Warranty Code: 5134298
- d) Operation Code: 51350AOT
- e) Original Part No.: 9999999996

Repair (includes inspection both wheel ends and repairing one wheel end)

- a) Campaign No.: M0230
- b) Labor Charge: 3.8
- c) Warranty Code: 5134298
- d) Operation Code: 51350AOT
- e) Original Part No.: 9999999996