



Recall Campaign

NHTSA #: 11V-495 TC #: 2011-363

Job Code: 9901097
Flat Rate: 1 hour

REQUIRES PARTS TO BE ORDERED USING THE JAYCO ORDER FORM

ACTION REQUIRED:

Add a spacer between the axle and frame

MODELS / UNITS:

2007 Jay Feather LGT

30U 71JU0050-0160, 0162-0191, 0193-0200, 0202-0204, 0206-0208, 0210-0213, 0215-0235, 0237, 0239-0241, 0243-0250
31V 71JV0050-0055, 0057-0064, 0066-0067, 0069-0108, 0110-0114, 0116-0120, 0123-0128, 0130-0135, 0137-0193, 0195-0214

2008 Jay Feather LGT

311 81J10051, 0053-0074, 0076-0077, 0080-0081, 0083-0087, 0089-0091, 0093-0116, 0118-0120, 0122-0130, 0132-0141, 0143-0145
0147-0164, 0166-0186, 0188-0189, 0192-0209, 0211-0212, 0214-0222, 0224-0230, 0232-0233, 0235-0283, 0285-0291,
0293-0300, 0302-0303, 0305-0308, 0310-0314, 0316-0324, 0326-0337, 0339-0361, 0363-0373
29D 81JD0051, 0053-0084, 0086-0107, 0109-0115, 0117-0126, 0128-0155, 0158-0194, 0196-0203, 0205-0214, 0216-0222, 0224-0226
0228-0242, 0244-0246, 0248-0282, 0284-0290, 0292-0316, 0318-0440
31E 81JE0050-0072, 0075-0087, 0089-0092, 0094-0098, 0100-0103, 0105-0129, 0131-0136, 0138-0140
25F 81JF0050-0062, 0064-0103, 0105-0139, 0141-0145, 0147-0174, 0176-0184, 0186-0191, 0193-0207, 0209-0210, 0212-0215,
0217-0258, 0261-0268, 0270-0291, 0293-0326, 0328-0333, 0335-0342, 0344-0361, 0364-0373, 0375-0389, 0391-0404,
0406-0420, 0422-0442, 0444-0495, 0497-0527, 0529-0540, 0542-0601, 0604-0640, 0642-0651
30U 81JU0051-0093, 0095-0120, 0122-0128, 0131-0138, 0140-0148, 0150-0157, 0159-0183, 0185-0190, 0192-0193, 0195-0199, 0201,
0203, 0205, 0207-0209, 0212-0217, 0219-0223, 0225-0226, 0228-0232, 0234-0235, 0237-0238, 0240-0241, 0243, 0245-0246
0249-0252, 0254-0281, 0283-0287, 0289-0290, 0292-0301, 0303-0318, 0320-0402
31V 81JV0051-0155, 0157-0169, 0171, 0173-0198, 0200-0218, 0220-0273, 0275-0292, 0294-0299
28W 81JW0050-0055, 0057-0066, 0068-0127, 0129-0170
29X 81JX0051-0085, 0087-0090, 0092-0103, 0106-0111, 0114-0173, 0175-0282, 0284-0291, 0293-0295, 0297-0352

KIT CONTENTS

Note: Kit can only be ordered using the order form

Instruction sheet
Frame spacer kit #10

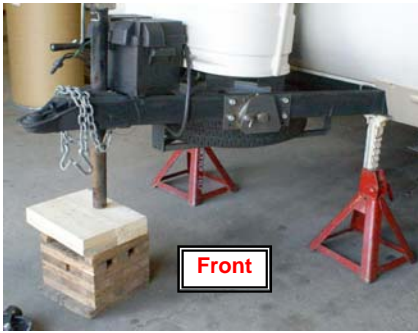
TOOLS/MATERIAL REQ.:

(6) jack stands (2) with wood blocks
Floor jack
Axle jack/support
Impact wrench with 15/16" socket
15/16" open end wrench
Torque wrench

INSTRUCTIONS

Unit Prep

- Using a floor jack, raise the front of the unit. Place blocks under the tongue jack, and place (2) jack stands on both sides of the A-frame.

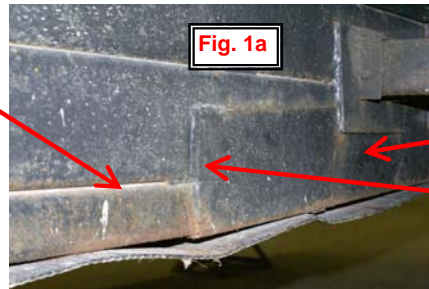


- Jack up the rear of the unit. The unit should be raised so the **tires are a minimum of 3" above floor clearance**. Place a jack stand on both sides of the rear of the unit. A wood block should be placed between the jack and the frame to prevent scuffing or marking of the paint on the frame.

CAUTION: The rear of the unit should be jacked up in stages, by raising one jack stand a small distance, and then changing to the other side to maintain the stability of the unit.

CAUTION: When jacking up the rear of the unit, be sure the floor jack is in front of the underbelly spacer. The jack must be placed in **FRONT** of the weld (**Fig. 1a**).

The jack should be on this side of the spacer weld



- Remove all tires.
- Place (1) additional jack stand on both sides of the unit between the tires.
NOTE: Be sure to move the brake wires aside so they are not caught between the jack and the frame.



Installing the spacer

- It will not be necessary to drop the axle to the floor. You will only be required to lower it enough to install the spacer. Place an axle jack (or method you use to drop axles) under the axle. It will need to be high enough and stable enough to securely support the axle while installing the spacer.



- One side of the unit, loosen the bolts that secure the axle on to the frame and leave them in place. You should only work on one side of the unit at a time. Loosen and remove the bolts on the other side of the unit. Lower the end of the axle low enough to install the spacer.



- Place the spacer between the frame and the axle mounting bracket. The spacer should be installed with the open side out.



- Install the (2) bolts through the back of the spacer and the frame bracket. Each bolt requires (1) washer on the nut side only. Install the other (2) bolts through to bottom of the spacer securing it to the axle bracket. **NOTE: Each bolt on the bottom of the spacer will require (1) washer on the BOLT SIDE AND (1) WASHER ON THE NUT SIDE.**



- Tighten and secure all 4 bolts/nuts. **NOTE: Bolts should be torqued to 130-150 ft. lbs.**



- Repeat the process on the other side of the same axle.

- Repeat steps 5-10 on the second axle.



- Put all the tires back on the unit and secure the lug nuts in place. Lower the unit and remove all jacks.

- Torque all tire lug nuts to 120 ft.lb.

NOTE: The spacer will raise the unit clearance height by 2 5/8". It may be necessary to adjust the hitch height.

