



THIS DOCUMENT AND THE CONTENTS DISCUSSED HEREIN ARE THE CONFIDENTIAL AND PROPRIETARY INFORMATION OF NEW FLYER INDUSTRIES CANADA ULC AND NEW FLYER OF AMERICA INC. AND ARE DISCLOSED BY NEW FLYER IN CONFIDENCE. THIS DOCUMENT AND THE CONTENTS HEREIN ARE NOT TO BE DISCLOSED BY THE INTENDED RECIPIENT WITHOUT THE PRIOR WRITTEN AUTHORIZATION OF NEW FLYER. ANY UNAUTHORIZED DISCLOSURE, REPRODUCTION OR OTHER DISTRIBUTION OF THIS DOCUMENT OR INFORMATION IS STRICTLY PROHIBITED AND MAY RESULT IN ACTION BEING TAKEN AGAINST THE PARTY MAKING THE UNAUTHORIZED DISCLOSURE. THIS DOCUMENT AND ALL COPIES HEREOF MUST BE RETURNED TO NEW FLYER UPON REQUEST.

INSTRUCTION TO SERVICE ITS: 4740

SECTION: 219 Engine & Transmission	MODEL: <input type="checkbox"/> 30FT <input type="checkbox"/> 35FT <input checked="" type="checkbox"/> 40FT <input type="checkbox"/> 60FT <input checked="" type="checkbox"/> GSL <input type="checkbox"/> CNG <input type="checkbox"/> LNG <input checked="" type="checkbox"/> ELEC	TYPE: <input type="checkbox"/> HIGH FLOOR <input checked="" type="checkbox"/> LOW FLOOR	WRITTEN BY: Grant Li
---	--	---	-----------------------------

OBJECTIVE/SUBJECT:
Replace gearbox output flange bolts.

- PROCEDURE:**
1. Turn the main battery disconnect switch to the "OFF" position.
 2. Raise coach in accordance with the New Flyer Service Manual.
 3. Remove driveshaft from the bus. Retain bolts for reuse, discard locknuts. See Figure 1.

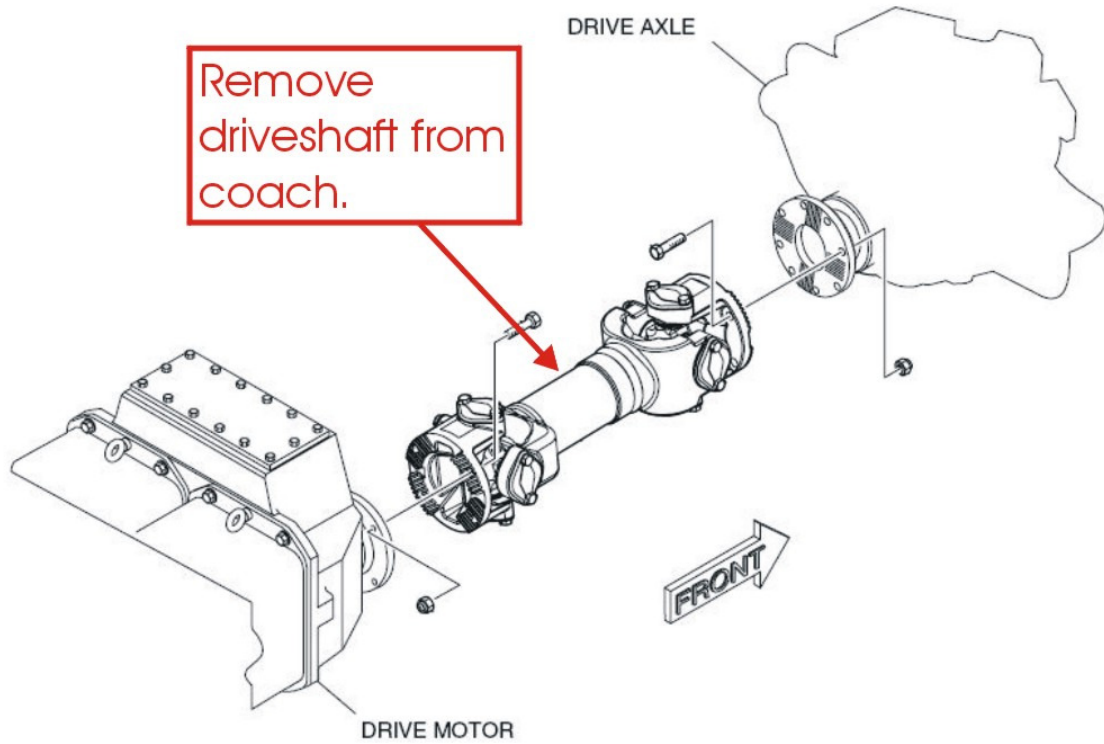


Figure 1: Driveshaft installation.

4. Inspect hardware shown in Figure 2 for looseness and note results.

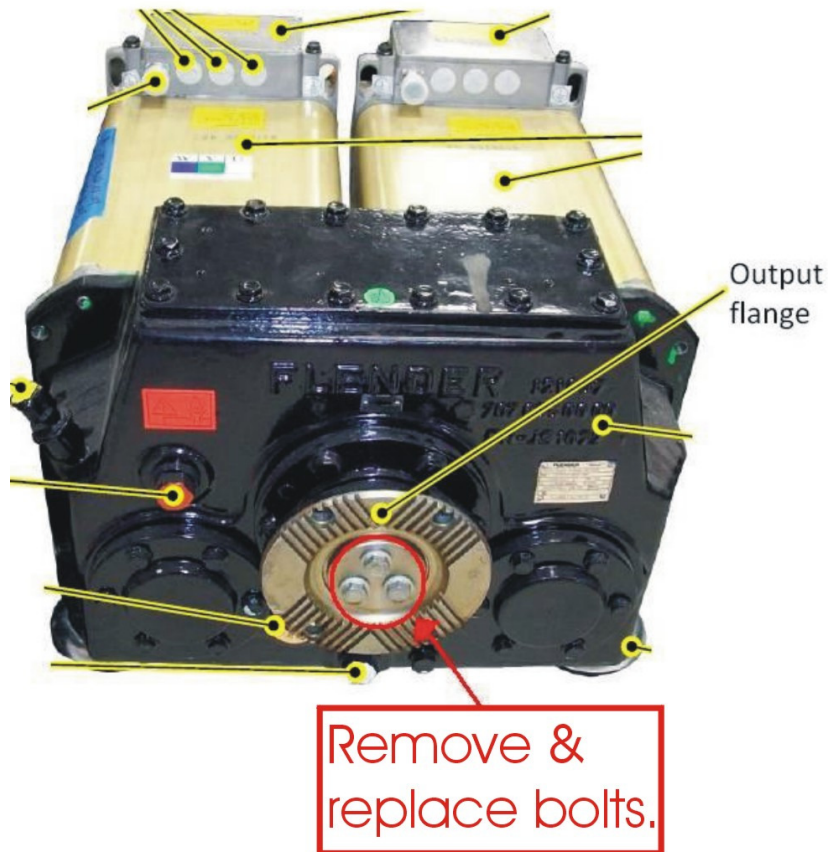


Figure 2:

5. Remove hardware from gearbox flange as shown in Figure 2 and discard.
6. Inspect endplate (PN 6403697), ensure it is not warped, replace if damaged. See Figure 3.

Use a straight edge

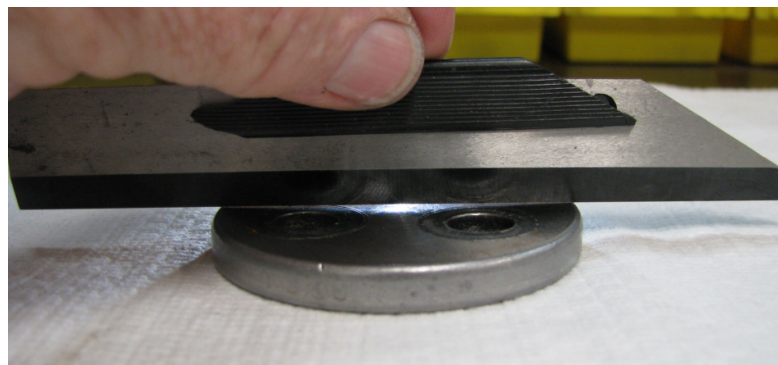


Figure 3: End plate.

7. Inspect the gearbox output flange o-ring (PN 6403696) underneath the endplate, replace if damaged. See Figure 4.

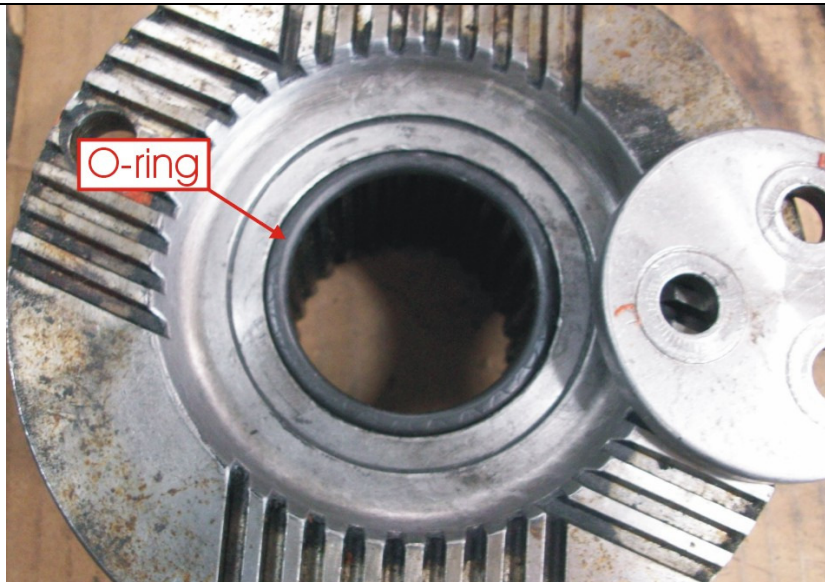


Figure 4: O-ring.

8. After dismounting and before new of mounting of the gear flange bolts (PN 6403698), run a tap through the three output shaft bolt holes, to clear dried Loctite deposits.
9. Apply Loctite 262 to threads of new bolts (PN 6403698) and install in place of the old bolts with the o-ring (PN 6403696) and endplate back in place also. Torque bolts to 63 ft-lbs.
10. Mark hardware with a torque stripe. Ensure that the torque stripes are positioned so that they are clearly visible for external inspection through the small inspection windows between the cross-tooth flanges of the driveshaft and gearbox output flange. See Figure 5.

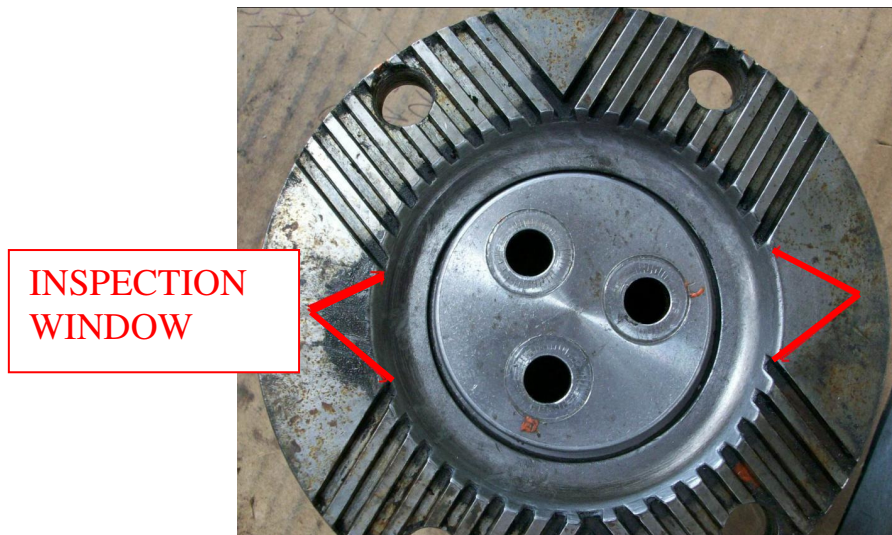


Figure 5: Torque marks.

11. Reconnect driveshaft to gearbox using bolts previously removed and new locknuts (PN



40N08000). Torque hardware between 63-75 ft-lbs.

12. Mark hardware with a torque stripe.
13. Clean up work area.
14. If necessary, lower coach in accordance with the New Flyer Service Manual.
15. Turn the main battery disconnect switch to the "ON" position.



LABOUR ESTIMATE				
	Operation	Men	Hours	Labour Time M X HR
1	Replace gear box output flange bolts.	1	1.5	1.5

PARTS REQUIRED					
Item	Part Number	Description	Qty. per Coach	Units	Notes
1	149911	LOCTITE-262 THREADLOCK	0.01	EA	
2	6403698	BOLT - M10X40	3	EA	
3	40N08000	NUT-HEX LOCK 1/2 NC	8	EA	
4	6403696	O-RING - Siemens ISE Gearbox	1	EA	
5	6403697	PLATE - GEARBOX END	1	EA	