

RECALL BULLETIN:
110715FRV

YEAR(S) AFFECTED:
2009-2011

PRODUCT(S) AFFECTED:
American Allegiance, American Eagle, American Heritage, American Tradition, Discovery, Providence, and Revolution LE, manufactured 9/4/2009 through 1/5/2011 and equipped with a tag axle

MODEL(S) AFFECTED:
Model Year 2009:
American Allegiance models 42G & 42T;
American Heritage 45BT;
Revolution LE models 42K & 42W

Model Year 2010:
American Eagle model 45B,
American Heritage model 45BT, and
Revolution LE model 42W

Model Year 2011:
American Eagle models 42M, 42P, 45B, & 45T;
American Heritage model 45BT;
American Tradition models 42M, 42P, & 45Y;
Discovery models 42A & 42C;
Providence models 42P & 42W;
Revolution LE models 42Q, 42T, & 42W

SUBJECT:
Install new
Manufacturer Federal
Certification Tag

KEYWORDS:
Manufacturer Federal
Certification
Tag, label, tire,
pressure

ISSUE DATE:
August 2011

© 2011 Fleetwood RV, Inc.

The purpose of this Bulletin is to inform Fleetwood dealers of the need to replace the Manufacturer Federal Certification Tag on certain model year 2009-2011 American Allegiance, American Eagle, American Heritage, American Tradition, Discovery, Providence, and Revolution LE, manufactured 9/4/2009 through 1/5/2011 and equipped with a tag axle. A list of affected vehicles appears at the end of this bulletin.

CONDITION:

On motor homes affected by this recall, the Federal Certification Tag figures related to the intermediate and rear tire pressure ratings, in kilopascals (KPA), were printed in their reversed positions.

Note: Tire pressure ratings in pounds per square inch (PSI) are correct.

Read this entire document before proceeding.

CORRECTION:

Retail owners of affected motor homes and dealers holding affected motor homes in inventory will receive a package from Fleetwood containing a new and corrected, **serial number specific**, Manufacturer Federal Certification Tag. Verify eligibility by referring to the affected motor home serial numbers listed at the end of this Bulletin before applying new labels.

Important: Be sure the correct replacement Manufacturer Federal Certification Tag is on-hand before proceeding.

1. Locate the original Federal Certification Tag, adhered to the wall behind the driver's seat.
2. Record any additional weight information (if present) that was written on the original Manufacturer Federal Certification Tag due to the addition of dealer-installed options after the motor home was manufactured. (See Figure 1.) Transfer this information to the new Manufacturer Federal Certification Tag using a black, fine point, permanent marker.

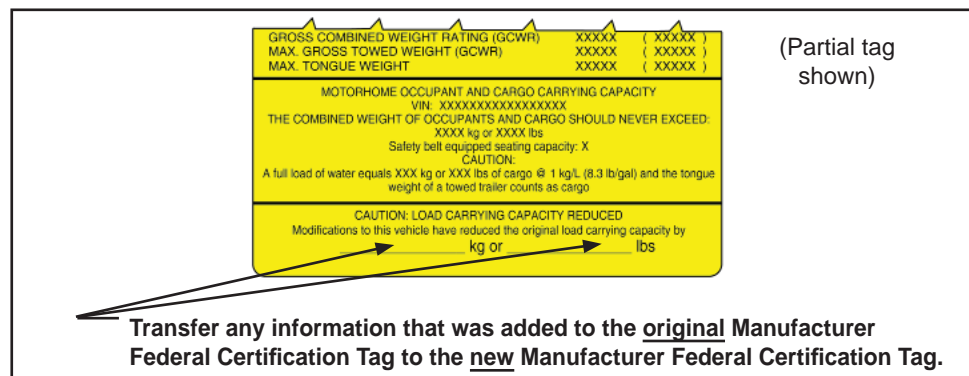


Figure 1

This bulletin is supplied for technical information only and is not an authorization for repairs.

Federal Law (Section 154 of the National Traffic and Motor Vehicle Safety Act of 1966) requires that: If you have received a notice of recall or failure to comply from Fleetwood or any component manufacturer, you must repair or otherwise correct the defects on vehicles remaining in your inventory, according to the notification, before selling or leasing the vehicles. Any vehicle lessor receiving this recall notice must forward a copy of the notice to the lessee within ten days.

"It is impossible to know, evaluate and advise the service trade of all conceivable ways in which service might be done or of the possible hazardous consequences of each way. Accordingly, anyone who uses a service procedure or tool must first assure that neither personal safety nor vehicle safety will be jeopardized by the selected service methods."

3. a) If the original Federal Certification Tag is loose or peeling, remove it and discard. Remove any adhesive residue in the application area using a clean shop cloth slightly dampened with isopropyl alcohol.
b) If the original Federal Certification Tag is adhered securely in place, use a black permanent marker to deface it.
4. Peel and tear approximately 1" from the top of the adhesive backing of the new Federal Certification Tag. (This will allow control of the application.) Slowly apply the new Tag directly over the original, using your fingers to smooth down newly-applied areas. (If the original Tag was removed in Step 3a, apply the new Tag in the same location as the original.) Continue to remove backing, working from top to bottom, until the entire tag completely adheres to and covers the original tag.

NOTE: Federal Certification labels have "tamper-proof" edges and are designed to tear if removal is attempted.

PARTS:

Use tag supplied with the Recall mailing. No additional parts are necessary.

TOOLS:

Black, Fine Point, Permanent Marker
Clean Shop Cloth
Isopropyl Alcohol

WARRANTY LABOR ALLOWANCE:

Use Flat Rate Codes:

Recall 110715FRV, Install New Federal Certification Tag
6011 - 12 0.10 hr. Inspected / Defective/Repaired

This bulletin is supplied for technical information only and is not an authorization for repairs.

Federal Law (Section 154 of the National Traffic and Motor Vehicle Safety Act of 1966) requires that: If you have received a notice of recall or failure to comply from Fleetwood or any component manufacturer, you must repair or otherwise correct the defects on vehicles remaining in your inventory, according to the notification, before selling or leasing the vehicles. Any vehicle lessor receiving this recall notice must forward a copy of the notice to the lessee within ten days.

"It is impossible to know, evaluate and advise the service trade of all conceivable ways in which service might be done or of the possible hazardous consequences of each way. Accordingly, anyone who uses a service procedure or tool must first assure that neither personal safety nor vehicle safety will be jeopardized by the selected service methods."