

Safety Recall

Subject: MFS08 WHEEL BEARING INSPECTION AND REPLACEMENT

Date: April 9, 2012

Bulletin: RCB-011011

Campaign #: M0220

Affected Models: Certain 2011 and 2012 MY NE8J Conventional model trucks assembled at the Williamstown, WV. assembly plant

Important: Verify on the Hino DCS Warranty System that the vehicle still needs to have this work performed.

Condition:

This Recall involves inspecting the outer front wheel bearing and replacing it, as necessary. The outer bearing cone of the front axle may not have been properly heat treated. The suspect bearing cones have the date code "ZJ" on the major face of the inner bearing race just following the "CANADA" stamp.

Subject Vehicles:

Certain 2011 and 2012 model year NE8J conventional model trucks assembled at the Williamstown, WV. assembly plant

Before You Begin:

Read and understand all instructions and procedures before you begin. Read and observe all Caution and Warning safety alerts that precede these instructions while following these procedures. The alerts help to avoid damage to components, serious personal injury, or both.

!!! WARNING !!!

Park the vehicle on a level and solid surface

Apply the parking brake and confirm parking brake activation

Place wheel chocks in front and behind rear wheels.

Support the vehicle with safety stands.

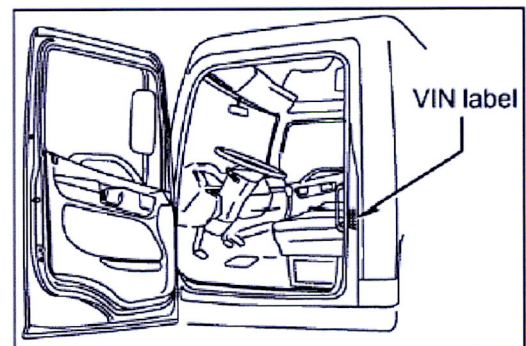
DO NOT WORK UNDER A VEHICLE WITHOUT SAFETY STANDS IN PLACE.

Jacks can slip over and fall, resulting in serious personal injury as well as damage to components.

Safety Recall

Use a brass hammer or leather mallet for assembly and disassembly procedures. DO NOT HIT STEEL PARTS WITH A STEEL HAMMER. Pieces of a part can break off. Serious personal injury and damage to components can result. Use care when working around surfaces which may be hot. Wear safety glasses to prevent eye injuries. Properly calibrated torque wrenches must be used to prevent damage to the vehicle and its components. Refer to any applicable Material Safety Data Sheet (MSDS) for additional information

Once Recall Is Completed
Complete a recall sticker and affix to the left door jam above the V.I.N. decal.



PARTS REQUIRED:

All inspections

Part Name	Part Number	Quantity
Hub Cap Gasket	2208C835	2
Star Washer Kit (2 Washers)	KIT1378	1
Mobil Delvac Synthetic 75w140		As Required

If Bearing Replacement is required per side

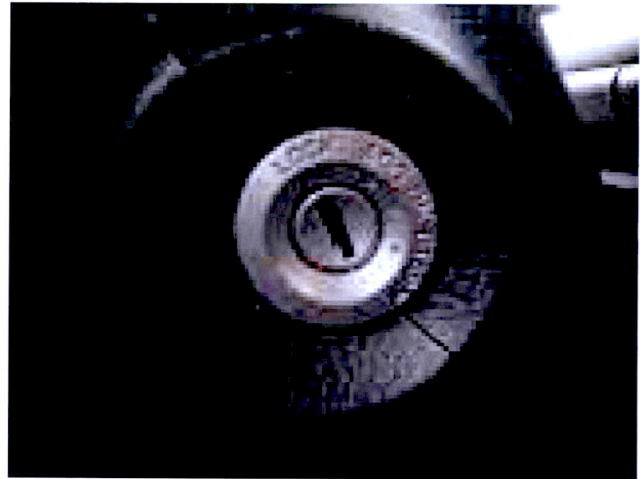
Part Name	Part Number	Quantity
Outer Bearing cone	25877	1
Outer Bearing cup	25820	1
Inner Bearing cone	JM207049A	1
Inner Bearing cup	JM207010	1
Seal	A1205C2161	1

SPECIAL SERVICE TOOLS REQUIRED
HDT-650568-5 SEAL DRIVER and J-8092 HANDLE

Safety Recall

INSPECTION PROCEDURE:

1. Park the vehicle on level ground.
2. Confirm the engine is stopped, the starter switch is in the off (LOCK) position, and the key is removed.



3. Apply the parking brake.

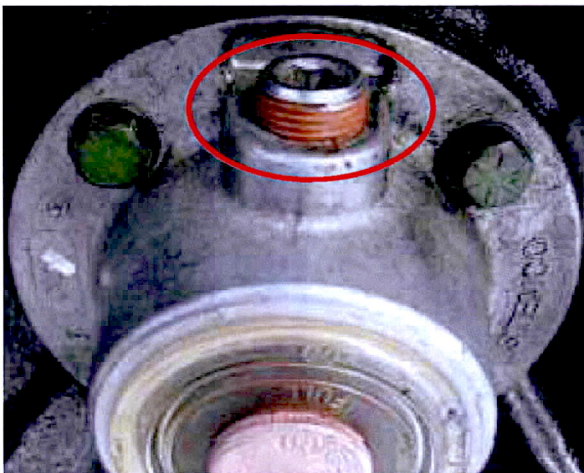


4. Chock all of the wheels.



Safety Recall

5. Raise the front of the vehicle until the front wheels are off the ground. Support the vehicle safely with safety stands



6. Remove drain plug and drain lubricant.

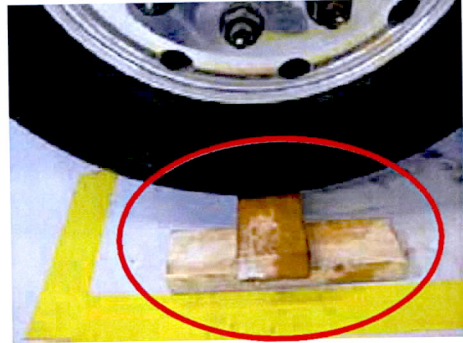


7. Remove the 4 cap screws that fasten the hub cap to the hub. Remove the cap and gasket.

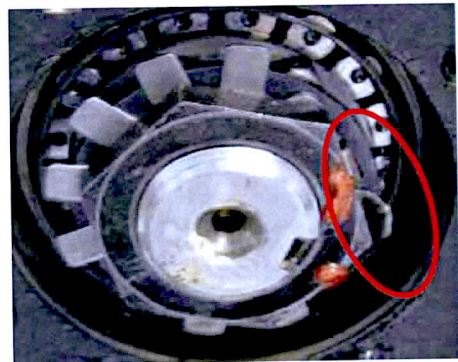


Safety Recall

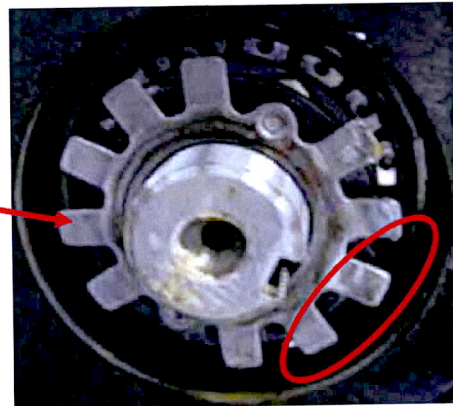
8. Support the wheel end using a suitable device prior to removing the fastening hardware so that the hub stays in position without retention.



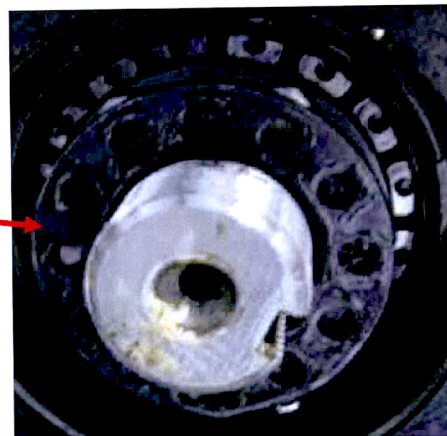
9. Bend the locking tab away from the nut and remove the nut.



10. Remove the lock washer.

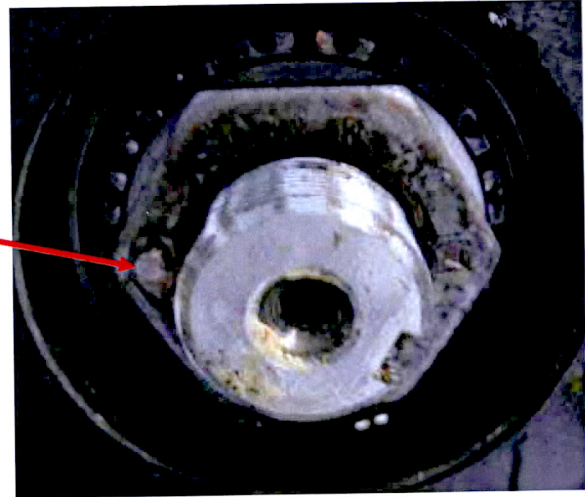


11. Remove the pierced lock ring.

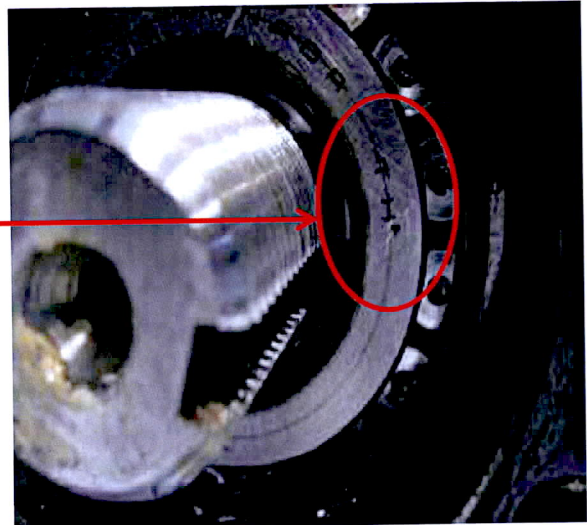


Safety Recall

12. Remove the adjusting nut.

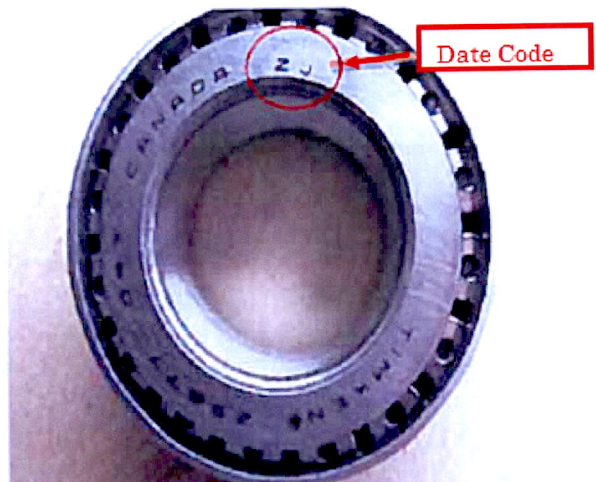


13. Inspect the **date code** located on the underside of the outer wheel bearing cone. It is comprised of two letters. (In the photo at right the letters are T H.)



14. If the date code is **"ZJ,"** the bearing cone and related parts **MUST BE REPLACED**. Proceed to Step #1 of REPAIR PROCEDURE, below.

If the date code is not **"ZJ,"** proceed to Step #1 of REASSEMBLY PROCEDURE, on page 10.



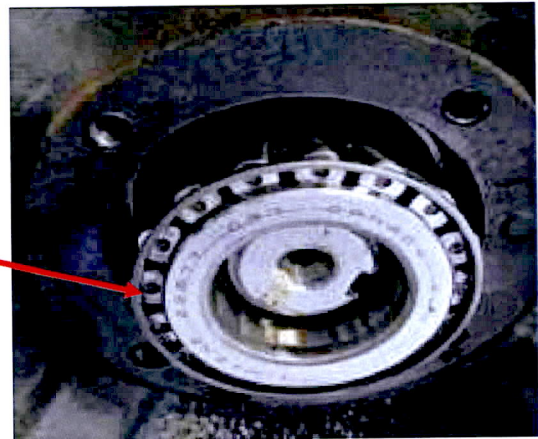
Safety Recall

REPAIR PROCEDURE:

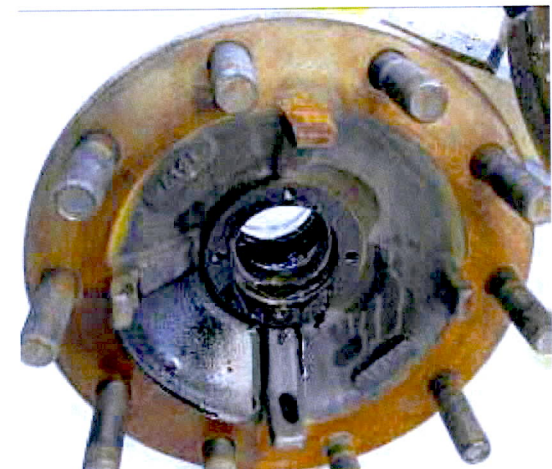
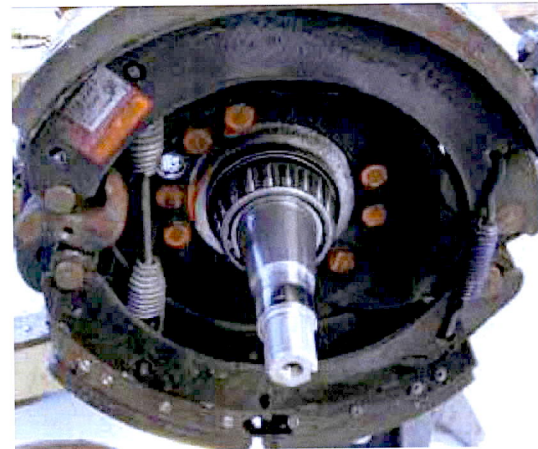
If wheel bearing has **ZJ**, it is necessary to replace both the inner and outer bearings, cones, and seal. Contact Ontrac to document the failure and set up parts return.

Contact On Trac at 866-On Trac (668-7221) – Document the case number.

1. Remove the tire-wheel assembly from the hub.
Rock the hub and remove the outer wheel bearing.

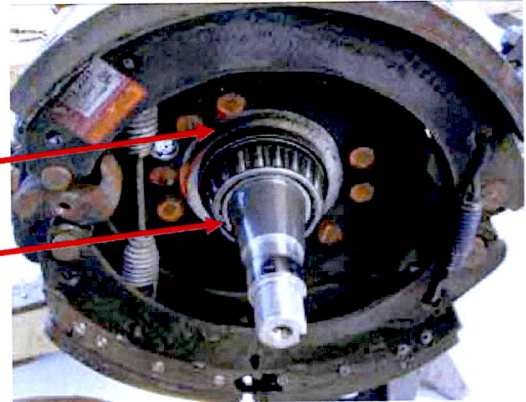


2. Remove the hub assembly from the spindle.

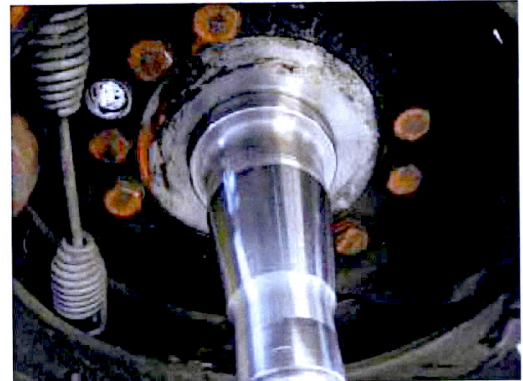


Safety Recall

3. Remove the inner bearing and seal.



4. Clean the entire spindle.



5. Using a suitable punch remove the outer bearing cup. Then remove the inner bearing cup.

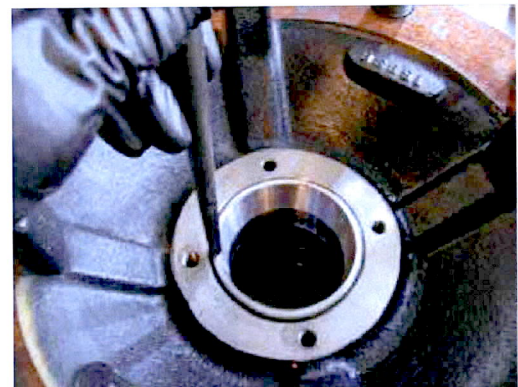
CAUTION. Never hit a cup or any hardened part directly with a hammer. Use a suitable punch and brass hammer.



6. Clean the inner hub before installing the cups.

7. Install the outer bearing cup and inner bearing cup.

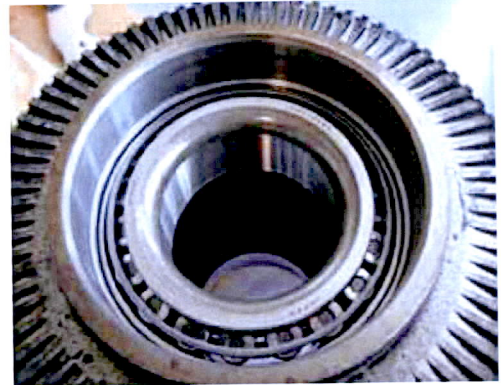
CAUTION. Never hit a cup or any hardened part directly with a hammer. Use a suitable punch and brass hammer.



Safety Recall

8. Install the inner bearing cone and lightly lubricate with the lubricant specified below.

SPECIFIED LUBRICANT:
Mobil Delvac Synthetic 75W90



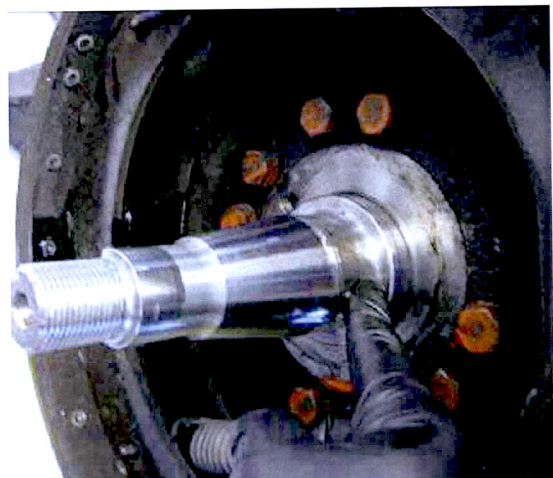
9. Using the proper tool, see below, install the hub bearing seal.

Special Service Tool:
HDT-650568-5 SEAL DRIVER and J-8092 HANDLE



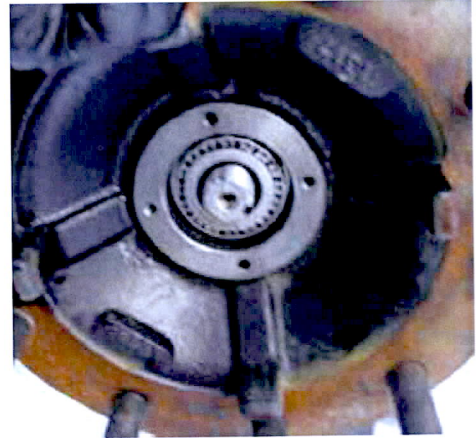
10. Lightly lubricate the spindle with the lubricant specified below.

SPECIFIED LUBRICANT:
Mobil Delvac Synthetic 75W90



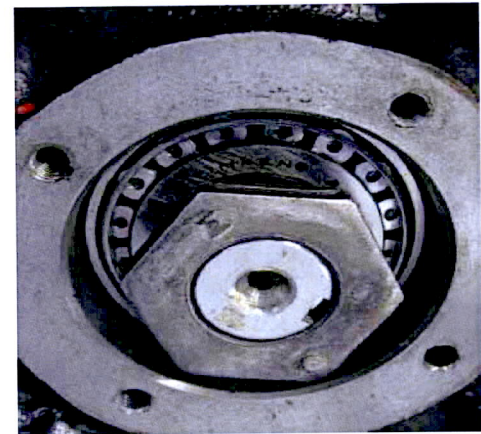
Safety Recall

11. Install the hub assembly and install the outer bearing cone.



REASSEMBLY:

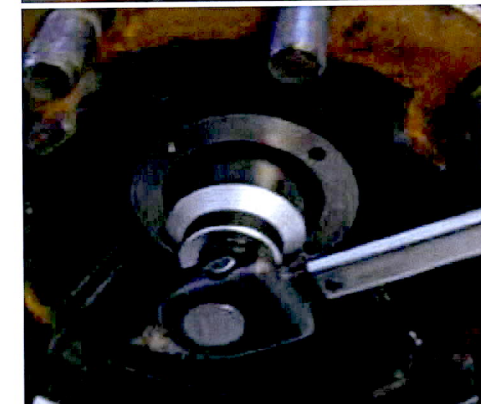
1. Reinstall the outer wheel bearing adjusting nut. The nipple must face outward. Tighten finger tight.



2. Tighten the adjusting nut to **100 ft-lbs (136Nm) while rotating** the hub in both directions. This will ensure the correct bearing-to-hub bore contact.

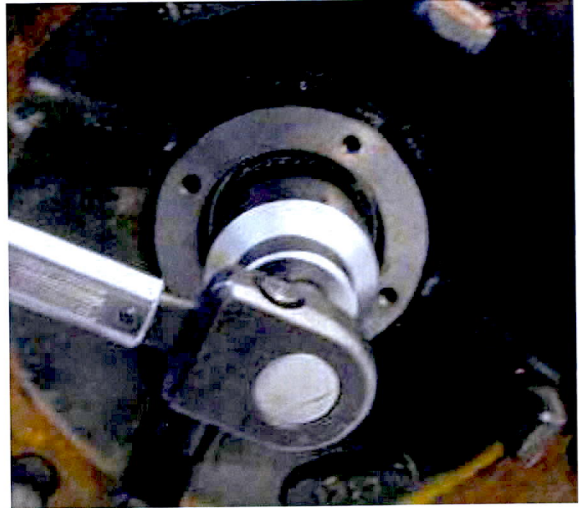


3. Loosen the adjusting nut completely. Retighten to **20 ft-lbs (27Nm)** while rotating the hub.

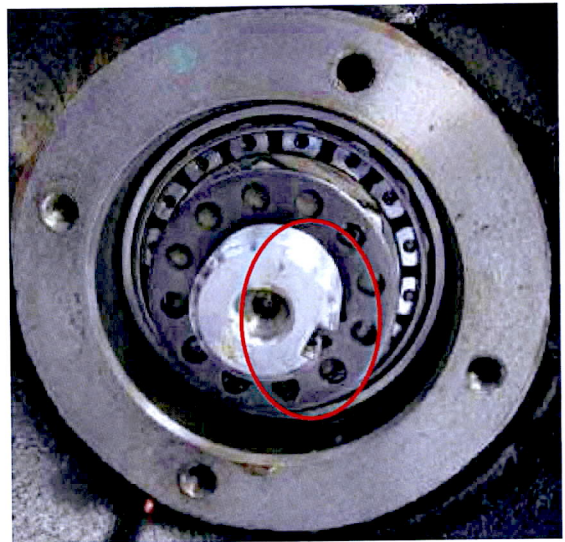


Safety Recall

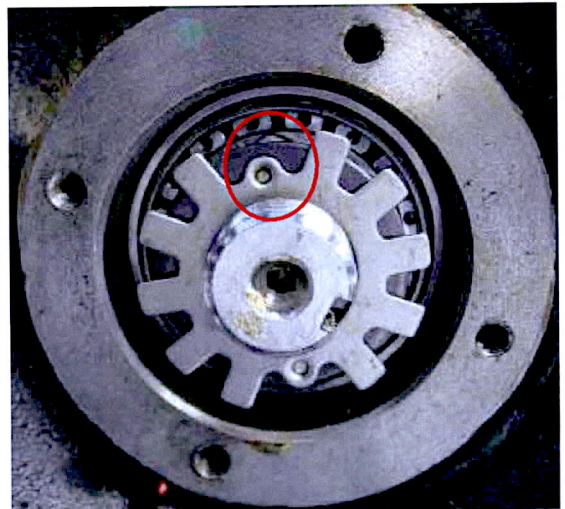
4. Back off the outer wheel bearing adjusting nut **1/3 turn**.



5. Install the lock ring, assuring the key is in the spindle keyway and the adjusting nut nipple is properly seated within a lock ring hole. The lock ring can be turned over if needed to properly align and seat with the adjusting ring lock nub.

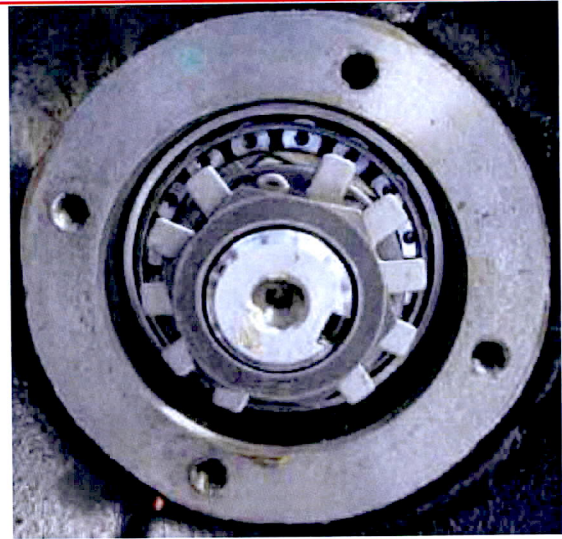


6. Use a new star pierced lock ring. Install the star pierced lock ring. Ensure that the star pierced lock ring nipples face and engage the holes on the lock ring.



Safety Recall

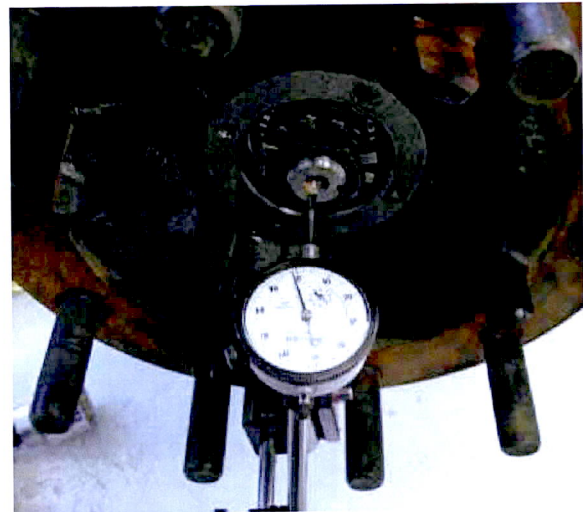
7. Install the outer wheel bearing jam nut.
Tighten to the torque specified below.
Specified Torque.250 ft-lbs (340Nm)



8. Measure bearing end play with a dial indicator. Attach a magnetic base for the dial indicator at the bottom of the hub face or drum. Position the pointer in the middle of the spindle. Push and pull on the sides of the hub/drum.

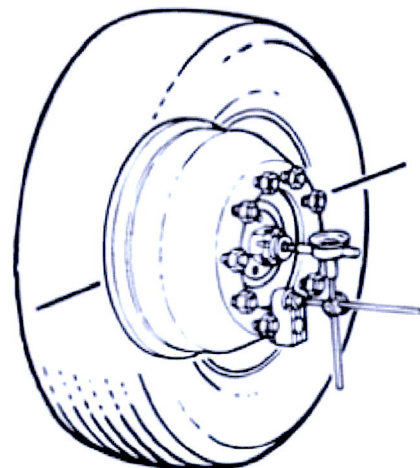
**Specified Bearing End Play:
0.001-0.005-inch (0.025-0.127 mm)**

NOTE: Verify that the brake drum and fasteners are properly fastened. Improper fastening can cause an improper reading on dial indicator.



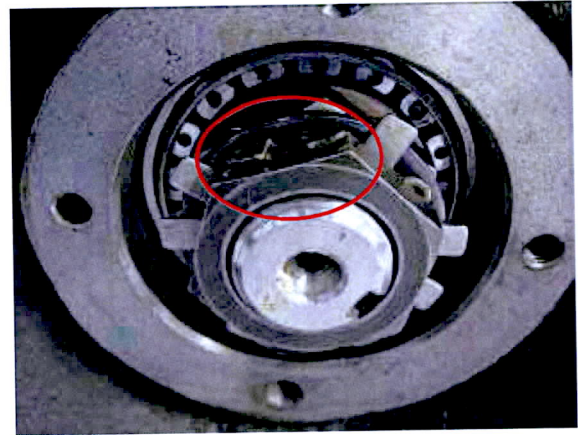
9. If necessary, readjust bearing end play to obtain the correct dial indicator reading.

**Specified Bearing End Play:
0.001-0.005-inch (0.025-0.127 mm)**

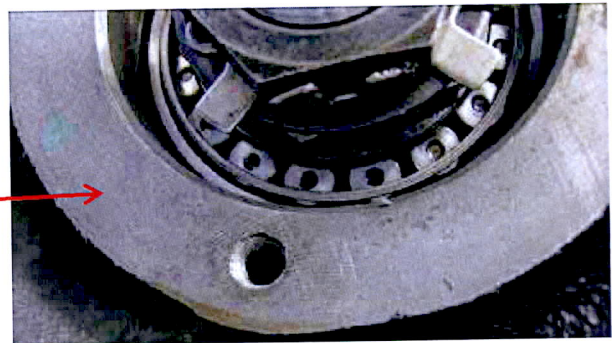


Safety Recall

10. When end play is within specifications, bend two tabs of the star lock washer over the outer wheel bearing jam nut to lock it into position.



11. Clean the gasket mounting surface of the hub and hub cap as needed.

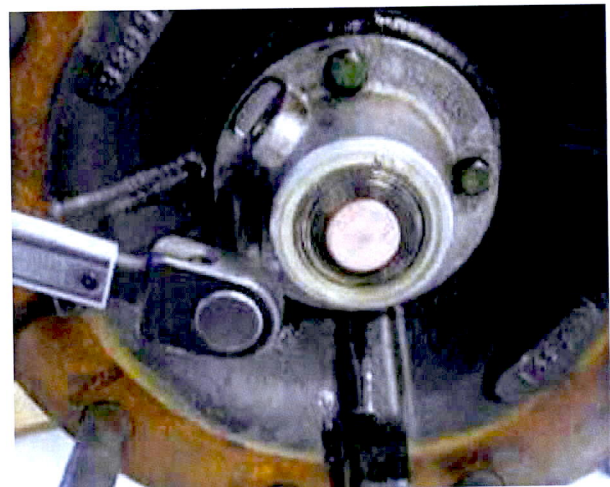


12. Install the new gasket and hubcap with cap screws and flat washers. Tighten the 4 cap screws to the torque specified below, using a star pattern.

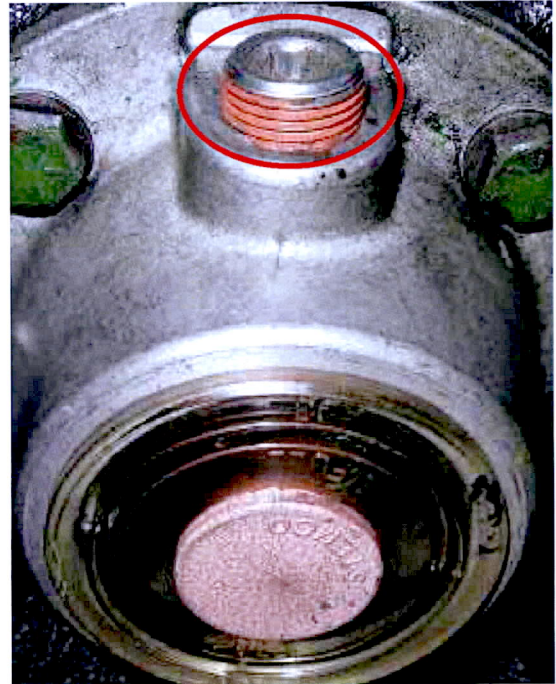
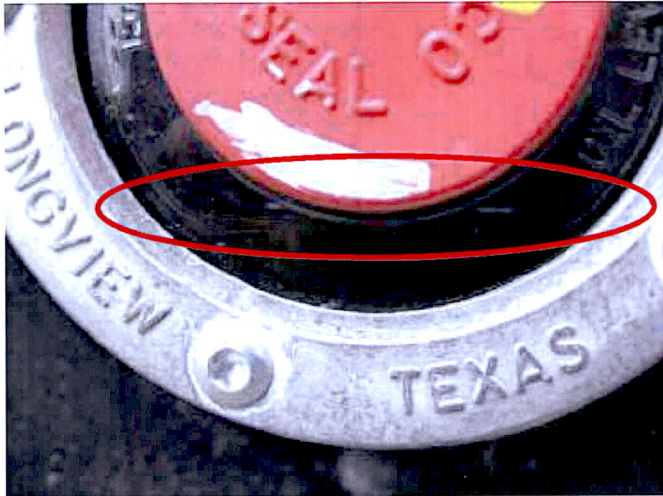
Specified Torque: 6 ft-lbs (8.13Nm)

13. Then use a star pattern to apply the final torque specified below.

Specified Torque: 16 ft-lbs (22Nm)



Safety Recall



14. Add the lubricant specified below until the lubricant is at the level specified on the cap. Install the plug into hub cover, and torque to the torque specified below.

Specified Lubricant:
Mobil Delvac Synthetic 75W90

Specified Torque: 5 ft-lbs (6.8Nm)

15. Reinstall the wheel, if it was removed, and tighten to the torque specified below.

Specified Torque: 475 ft-lbs (645Nm)

16. Raise the vehicle from the safety stands and remove the stands.

17. Lower vehicle to the ground.

18. Remove the wheel chocks.

Safety Recall

CLAIM APPLICATION:

NOTE: The OnTrac authorization number must be listed in the claim text if bearing replacement was required.

Inspection only:

- a) Campaign No.: M0220
- b) Labor charge: .5 hr / Per Side
- c) Warranty code: 5133153
- d) Operation code: 51350AOT
- e) Original parts No.: 25877

Replacement:

- a) Campaign No.: M0220
- b) Labor charge: 2.4 hr / per side
- c) Warranty code: 5133153
- d) Operation code: 51350AOT
- e) Original parts No.: 25877