

**TECHNICAL INSTRUCTIONS**  
**FOR**  
**NON-COMPLIANCE CAMPAIGN B0B (Phase 2)**  
**LT TIRE FMVSS138 TPWS**  
**CERTAIN**  
**2008 THROUGH 2011 MODEL YEAR FJ CRUISER**

***UPDATED DECEMBER 21, 2011***

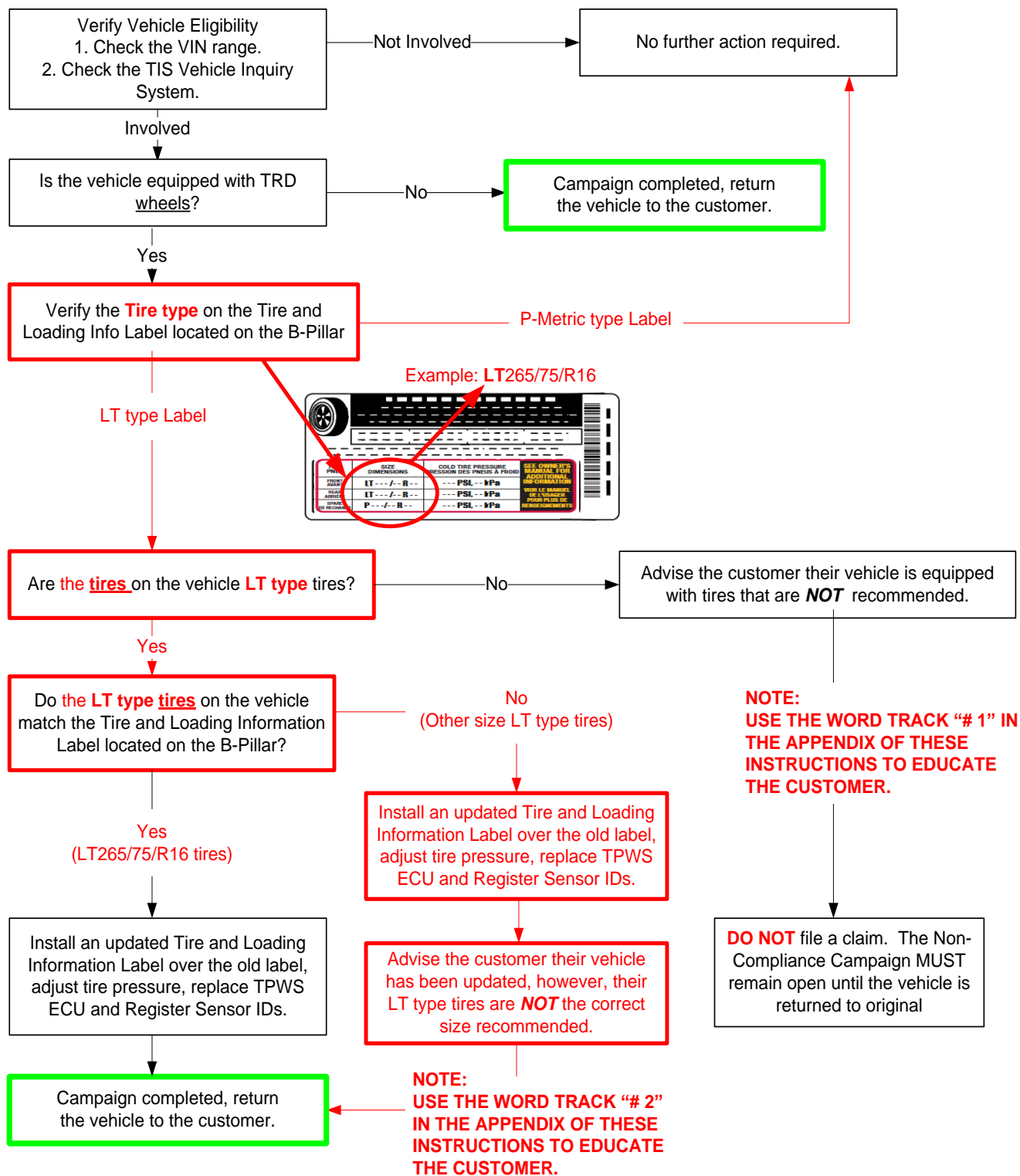
**TECHNICAL INSTRUCTION REVISION NOTICE:**

**Revised 12/21/11**

- Affected vehicle criteria updated to include all LT type tires (**SECTION V, STEP B**)

**Previous versions of these Technical Instructions should be discarded.**

# I. OPERATION FLOW CHART



## II. IDENTIFICATION OF AFFECTED VEHICLES

### A. AFFECTED VIN RANGE

MODEL	AFFECTED ACCESSORY	WMI	MY	VIN Range	
				VDS	Range
FJ CRUISER	TRD Off Road Wheels ONLY	JTE	2008	BU11F	0101454-0107097
					K001083-K056842
			2009	ZU11F	0019266-0019501
					K001376-K007206
			2010	BU4BF	K056881-K069827
					ZU4BF
			2011	ZU4BF	K070007-K098685
					K008514-K010842
2011	ZU4BF	K099163-K107157			
		K010845-K011388			

#### NOTE:

- This Non-Compliance Campaign **ONLY** involves certain vehicles equipped with the Toyota Racing Development (TRD) Off Road Wheels and Toyota recommended Light Truck (LT) tires.
- Verify the vehicle is equipped with the TRD Off Road Wheels before proceeding.
- Check the TIS Vehicle Inquiry System to confirm the VIN is involved in this Non-Compliance Campaign, and that the campaign has not already been completed prior to dealer shipment or by another dealer.
- TMS warranty will not reimburse dealers for repairs conducted on vehicles that are not affected or were completed by another dealer.
- If a customer's vehicle appears to have the affected TRD Road Wheels as described in these instructions, but the vehicle is not listed as affected in TIS please call (310) 468-5516.

## III. PREPARATION

### A. PARTS

Part Number	Part Description	Quantity
MDC# 00602-35016	TRD Tire Pressure Label	1
PTR24-35110	Tire Pressure Monitoring System ECU	1

### B. TOOLS

- Standard hand tools

## IV. BACKGROUND AND COMPONENTS

This Non-Compliance Campaign covers certain 2008 through 2011 model year FJ Cruiser, Land Cruiser, Sequoia, Tacoma, and Tundra vehicles on which both TRD Accessory Wheels and Toyota-recommended Light Truck (LT) tires were installed prior to the delivery of the vehicle to the first purchaser. These accessory wheels and tires were installed as a Post Production Option (PPO) by Toyota or as a Dealer Installed Option (DIO) by a Toyota dealer.


Vehicles with these accessory wheels and tires do not meet the Tire Pressure Monitoring System (TPMS) telltale illumination requirements specified in the Federal Motor Vehicle Safety Standard (FMVSS No. 138) because the telltale will not start illuminating at the inflation pressure specified by the standard.

## V. WORK PROCEDURE


### A. INSPECT THE WHEELS ON THE VEHICLE

Covered TRD Off Road Wheels

FJ Cruiser



OR



16" x 7.5" x 15mm Wheel  
6 x 139.7 mm PCD

<u>Finish</u>	<u>Part Number</u>
Gray	PT904-35070
Gun Metal Gray	PT904-35071
Matte Black	PTR20-35080

P/N on back of wheel

16"x 7.5" x 10mm Wheel  
6 x 139.7mm PCD

<u>Finish</u>	<u>Part Number</u>
Black	PTR18-35090
Bronze	PTR18-35090-BR

+ Bead Lock Ring  
P/N on back of wheel

Note: Each wheel design as multiple finishes available.

- IS THE VEHICLE EQUIPPED WITH THE TRD OFF ROAD WHEELS SHOWN

a) Yes) Go to **STEP B** (Confirm Label & Tire Match).

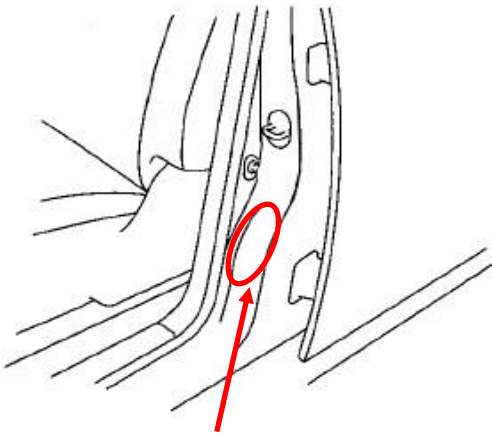
b) No) Campaign Complete.





**Note:**

- The wheels shown come in different color finishes.
- The TRD wheel is not what is covered in this Non-Compliance Campaign, it is only used to easily identify vehicles that may be covered.

### B. CONFIRM THE TIRE AND LOADING INFORMATION LABEL MATCHES THE TIRES ON THE VEHICLE



Tire Pressure and Loading Information

	
TIRE PNEU	SEE OWNER'S MANUAL FOR ADDITIONAL INFORMATION
TIRE ANCIEN	VOIR LE MANUEL DE L'USAGER POUR PLUS DE RENSEIGNEMENTS
TIRE NOUVEAU	
SPARE DE RECHANGE	
SIZE DIMENSIONS	COLD TIRE PRESSURE PRESSION DES PNEUS A FROID
LT - - - / - R - -	--- <b>PSI</b> --- <b>kPa</b>
LT - - - / - R - -	--- <b>PSI</b> --- <b>kPa</b>
P - - - / - R - -	--- <b>PSI</b> --- <b>kPa</b>

- LOCATE THE TIRE AND LOADING INFORMATION LABEL ON THE DRIVER-SIDE B-PILLAR (DOOR JAM)

- DOES THE LABEL SHOW LT TYPE TIRES

a) Yes) Go to **STEP 3**

b) No) Tires are P-Metric  
Campaign Not Applicable





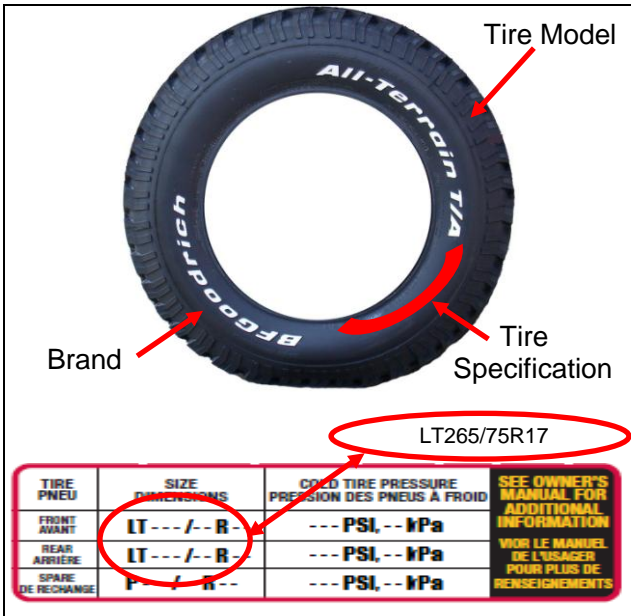
• ARE THE INSTALLED **TIRES** LT TYPE TIRES

a) Yes) Go to **STEP 4**

b) No) Campaign cannot be completed\*



\*Note: If campaign cannot be completed, do not file claim, vehicle must be returned to original condition before it can be completed. Refer to Appendix for Word Track #1.



• ARE THE TIRES ON THE VEHICLE ( LT265/75R16 123/120S)

a) Yes) Go to **STEP C.** (Install New Tire Label)

b) No) Advise customer of correct tire size\* and go to **STEP C**

\*Note: If the installed tires are **LT Type Tires**, but not LT265/75R16, complete the campaign steps and advise the customer that their vehicle has been updated, but the installed LT type tires are not the recommended size. Refer to Appendix for Word Track #2.

**C. INSTALL NEW LT TIRE PRESSURE LABEL**

TIRE	SIZE	COLD TIRE PRESSURE	PNEUS	DIMENSION	PRESSION DE GONFLAGE A FROID	MDC# 00602-35016
FRONT	LT265/75R16	320 kPa, 46 PSI	AVANT	LT265/75R16	320 kPa, 46 PSI	
REAR	LT265/75R16	320 kPa, 46 PSI	ARRIERE	LT265/75R16	320 kPa, 46 PSI	
SPARE	LT265/75R16	320 kPa, 46 PSI	SECOURS	LT265/75R16	320 kPa, 46 PSI	

**PART # 00602-35016**

• CLEAN TIRE AND LOADING INFORMATION LABEL SO NEW LABEL WILL AFFIX PROPERLY

• AFFIX THE NEW TRD L/T TIRE LABEL OVER CURRENT LABEL

Note: Do not remove old sticker as damage may occur to OE label.

## D. ADJUST TIRE PRESSURE AND RETRIEVE TPMS SENSOR IDS

Parameter	Value	Unit	Parameter	Value	Unit
Mode Status	Normal		IC3 Battery Voltage	Over	
Main Tire	5		IC4 Battery Voltage	Over	
2nd Tire	5		IC5 Battery Voltage	Over	
Select Switch	Main		Select SW Info	Without	
Vehicle Speed	3	MPH	Initialization SW Info	Without	
Registered ID1 Code	A78D4C6		IC1 Initial Threshold of Low-pressure	-14.5	psi(gauge)
Registered ID2 Code	1EF2465		IC2 Initial Threshold of Low-pressure	-14.5	psi(gauge)
Registered ID3 Code	2B2D465		IC3 Initial Threshold of Low-pressure	-14.5	psi(gauge)
Registered ID4 Code	A7FF4D3		IC4 Initial Threshold of Low-pressure	-14.5	psi(gauge)
Registered ID5 Code	940F462		IC5 Initial Threshold of Low-pressure	-14.5	psi(gauge)
IC1 Transmission Status	Freeze		Eng. Speed	0	rpm
Initialization Switch	OFF		Number of DTC	0	
ID1 Tire Inflation Pressure	35.5	psi(gauge)			
ID2 Tire Inflation Pressure	35.5	psi(gauge)			
ID3 Tire Inflation Pressure	37.7	psi(gauge)			
ID4 Tire Inflation Pressure	37.3	psi(gauge)			
ID5 Tire Inflation Pressure	38.4	psi(gauge)			
ID1 Temperature in Tire	63	F			
ID2 Temperature in Tire	64	F			
ID3 Temperature in Tire	75	F			
ID4 Temperature in Tire	77	F			

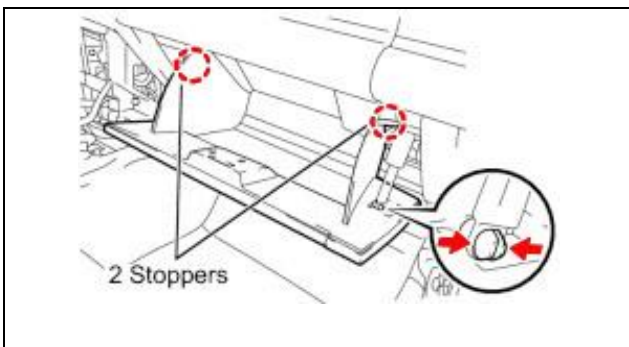
  

Registered ID1 Code	A78D4C6
Registered ID2 Code	1EF2465
Registered ID3 Code	2B2D465
Registered ID4 Code	A7FF4D3
Registered ID5 Code	940F462

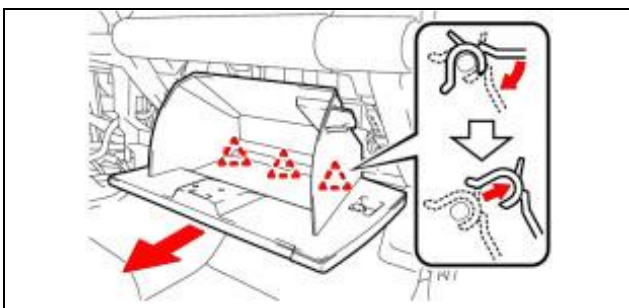
- INCREASE TIRE PRESSURES TO 46 PSI AS IDENTIFIED ON THE LABEL
- CONNECT TECHSTREAM TO THE VEHICLE AND RETRIEVE THE TPWS SENSOR IDS FROM THE DATA LIST

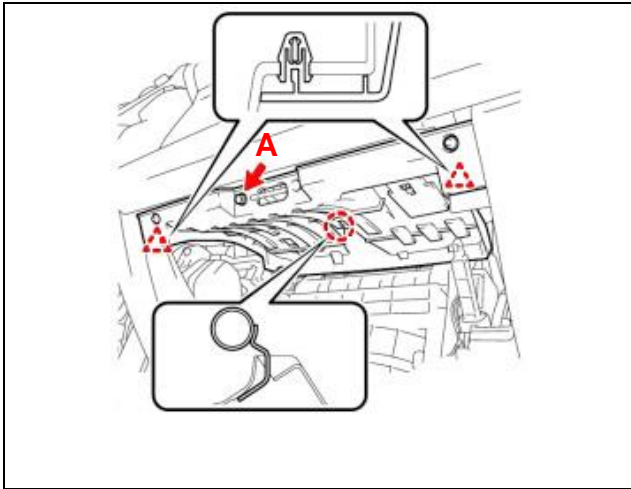
Note: Ensure the font is the correct size and shows all 7 sensor ID characters.

## E. REPLACE TPWS ECU AND RECORD THE TPWS SENSOR IDS



- REMOVE THE GLOVE COMPARTMENT DOOR ASSEMBLY
  - a) Disengage the pneumatic door stopper from the glove compartment door.
  - b) Slightly squeeze the upper part of the glove compartment door assembly to release the 2 stoppers.
  - c) Tilt the glove box done until it is horizontal while pulling the glove compartment door assembly toward the rear of the vehicle to release the 3 hinges.

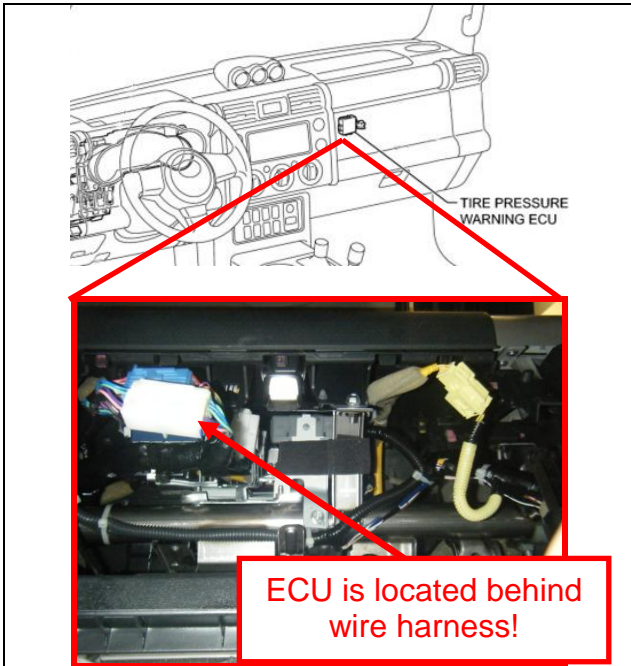




- **REMOVE INSTRUMENT PANEL LOWER FINISH PANEL SUB-ASSEMBLY .**

- Remove screw "A".
- Disengage the 2 clips and claws to lower the instrument panel lower finish panel.
- Disengage the stress release mounts for the wire harnesses attached to the back of the instrument panel lower finish panel.

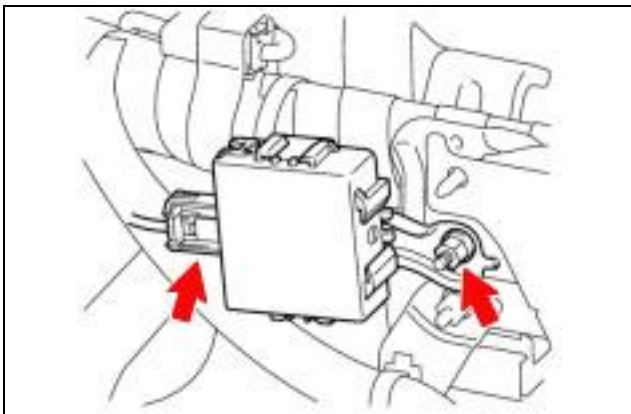
**Note: Do not separate the electrical connectors and interrupt the electrical circuit, especially the yellow SRS circuit.**



- **REMOVE THE TPWS ECU**

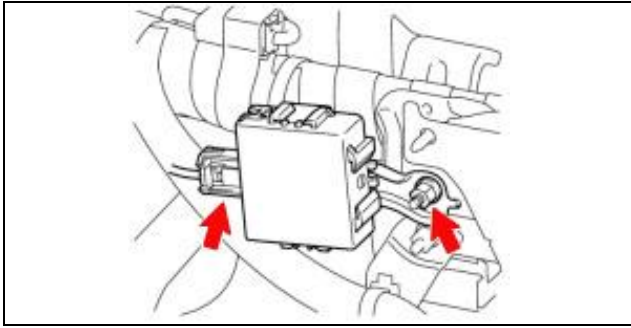
- Locate the TPWS ECU under the dash.

**Note: If the vehicle is equipped with Parking Sonars and Theft Deterrent, do not accidentally remove these ECUs as they are located in close proximity to the TPWS ECU.**



- Disconnect the tire pressure warning ECU connector.
- Remove the nut and tire pressure warning ECU.

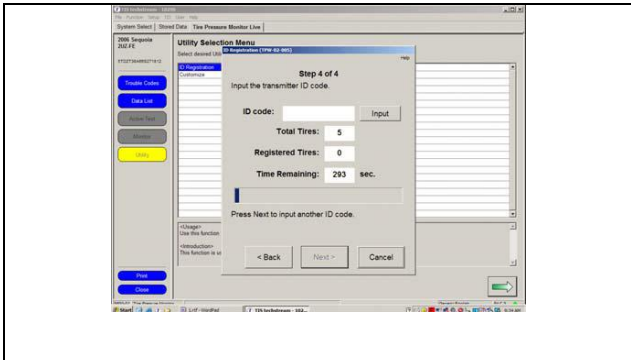
## F. INSTALL NEW TPWS ECU AND REGISTER ALL TPWS SENSOR IDS



### • INSTALL THE TPWS ECU

- Install ECU and torque nut to 6.0 Nm (53 in-lbs).
- Connect TPWS ECU.

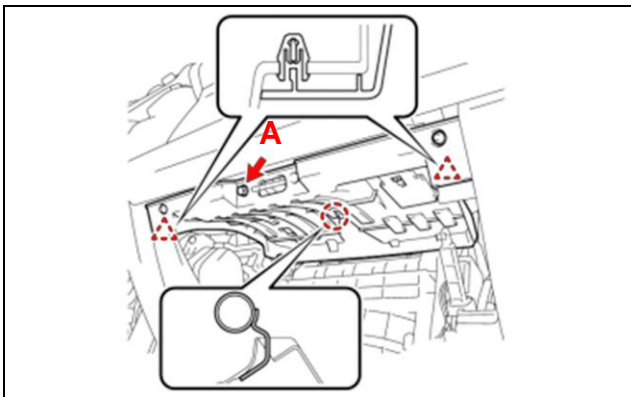
NEW ECU P/N: PTR24-35110



### • REGISTER TIRE PRESSURE SENSOR IDS INTO THE NEW TPWS ECU

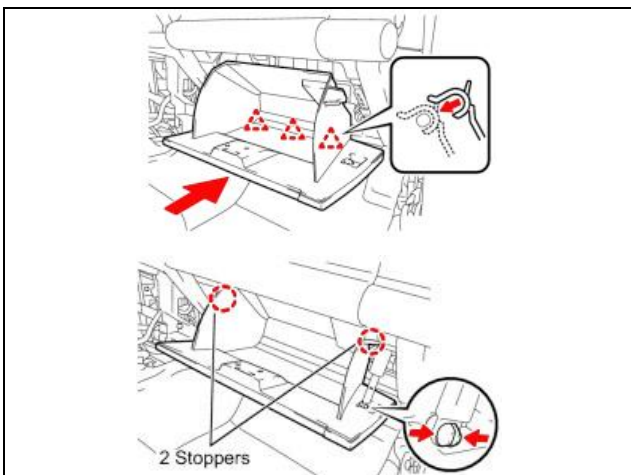
- Connect Techstream to the vehicle and perform TPWS Sensor ID Registration.
- Once registered, the TPWS telltale will be illuminated for a couple minutes until the ECU refreshes.
- Confirm TPWS Sensor Registration is Complete.

## G. RE-INSTALL GLOVE COMPARTMENT DOOR ASSEMBLY



### • INSTALL INSTRUMENT PANEL LOWER FINISH PANEL SUB-ASSEMBLY

- Reinstall wire harness stress release mounts to Instrument Panel Lower Finish Panel Sub-Assembly.
- Engage the 2 clips and claws to install the instrument panel lower finish panel.
- Install screw "A".



### • INSTALL GLOVE COMPARTMENT DOOR ASSEMBLY

- Install the glove compartment door assembly with the 3 hinges while holding horizontally.
- Slightly squeeze the upper part of the glove compartment door assembly to install.
- Install the glove compartment pneumatic door stopper.

## ◀ VERIFY REPAIR QUALITY ▶

- Confirm that the new label has been installed and is not peeling
- Ensure all TPWS Sensors have been registered properly and the Telltale is not illuminated
- If you have any question regarding this campaign, please contact your regional representative



## VI. APPENDIX

### A. ADVISE TO CUSTOMER

1) After inspecting your vehicle's current tires, we have identified them to be P-Metric or Passenger vehicle tires. Your current tires do not match the LT or Light Truck type tires in which your vehicle was originally equipped. However, the original Tire Pressure Monitoring Sensor Electronic Control Unit (ECU) equipped in your vehicle was calibrated for P-Metric tires. Therefore, Toyota cannot replace the TPMS ECU to one calibrate for LT type tires at this time. The recommended tire specification for your vehicle is:

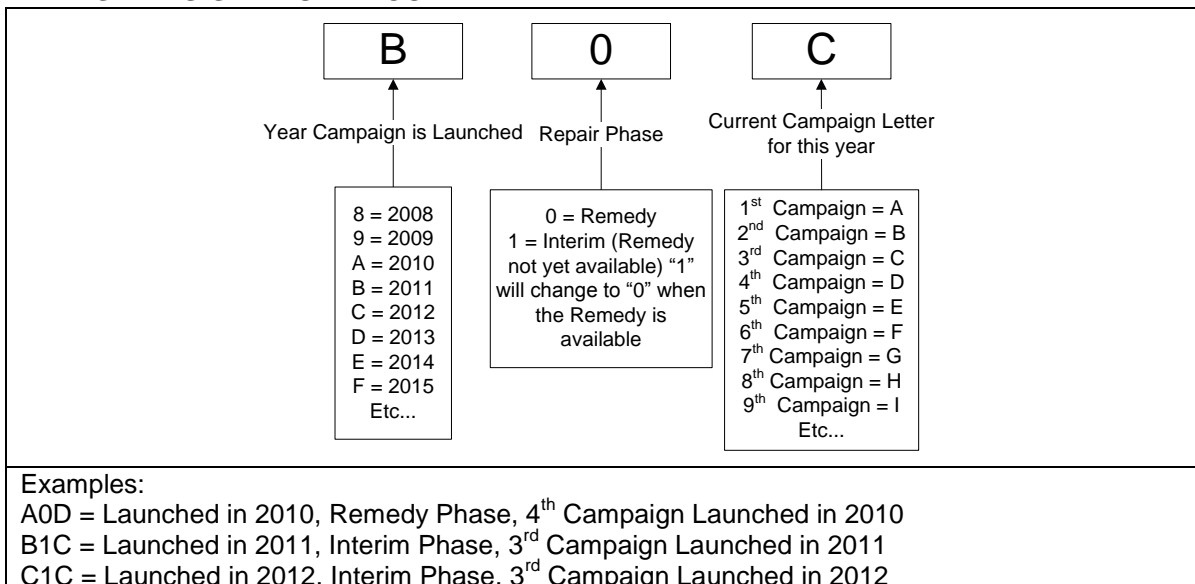


2) Since your vehicle does have LT type tires installed, the campaign procedure has been performed. However your vehicle's tire size and specification does not exactly match Toyota's recommendations. It is recommended that the originally equipped LT type tires with the correct size and specification be installed. The recommended tire specification for your vehicle is:



Have customer sign repair order acknowledging that you have identified that the tires equipped on their vehicle do not meet Toyota recommendations and that you have identified the recommended tire specs.

### B. CAMPAIGN DESIGNATION DECODER



Jeff Northrup / TMS Toyota Customer Services  
Product Quality and Service Support, Quality Compliance  
Dec 21, 2011  
Approved By: Bob Waltz

To: All Toyota Dealers  
From: Toyota Customer Services

**Non-Compliance Campaign - B0B (Phase 2)  
Certain 2008 through 2011 Model Year FJ Cruiser, Land Cruiser Vehicles Equipped with Toyota-  
Recommended Light Truck Tires and TRD Accessory Wheels**

**\*\*\*\*\*UPDATE\*\*\*\*\***

- Toyota has updated the technical instructions for the **FJ Cruiser** to include **identifying the specific type of tires on the vehicle** during the inspection process.
- As the vehicle ages, some customers may elect to replace their LT type tires with a different size than reflected in the original technical instructions. Moving forward, the updated dealer instructions include a process on how to handle those situations.

**Please refer to the technical instructions found on TIS for full details on this update. Previous versions of these instructions should be discarded.**

Thank you for your cooperation