



INSTRUCTIONS TO PERFORM CAMPAIGN 121

Models Affected:

2010 and 2011 model year Winnebago Tour® and Itasca Ellipse® (Models 42AD and 42QD) motor homes.

These motor homes were manufactured August 7, 2009 through February 7, 2011.

Kit Includes:

- (2) Vehicle Certification Labels
- Instructions

Procedure:

The affected vehicles were produced with Vehicle Certification Labels that state the incorrect tire load range. Incorrect labels will be replaced with correct ones.

The incorrect labels identify the tire load range as “G”. See Photo A. The correct tire load range is “H”. See Photo B.

NOTE: Your vehicle was equipped with the correct tires (Load Range H). This recall involves the label only.

A

MANUFACTURED BY	WINNEBAGO INDUSTRIES, INC.	03/09	INCOMPLETE VEHICLE MANUFACTURER	FREIGHTLINER CCC	10/08
			GVWR	44,300 LB	20,094
			SUITABLE TIRE AND RIM CHOICE		COLD INFLATION PRESSURE
LB	6,496 KG	27580R22.5G	TIRE	RIM	PRI
LB	9,072 KG	27580R22.5G		22.5X8.25	120 PSI
LB	4,536 KG	27580R22.5G		22.5X8.25	120 PSI

RECALL HAS BEEN COMPLETED IN ACCORDANCE WITH THE PRIOR NOTICE. THIS VEHICLE CONFORMS TO ALL APPLICABLE FEDERAL SAFETY STANDARDS IN EFFECT ON THE DATE OF MANUFACTURE.

Incorrect Tire Load Range

B

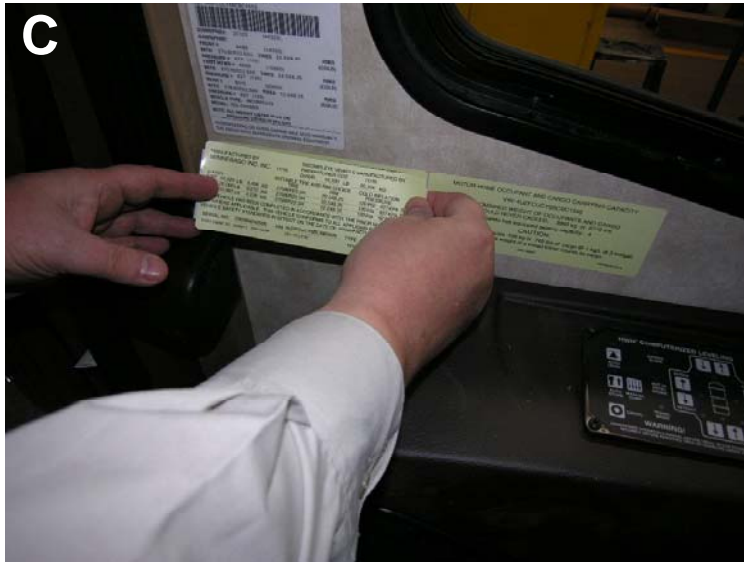
MANUFACTURED BY	WINNEBAGO INDUSTRIES, INC.	11/10	INCOMPLETE VEHICLE MANUFACTURER	FREIGHTLINER CCC	11/10
			GVWR	44,320 LB	20,104
			SUITABLE TIRE AND RIM CHOICE		COLD INFLATION PRESSURE
LB	6,496 KG	27580R22.5H	TIRE	RIM	PRI
LB	9,072 KG	27580R22.5H		22.5X8.25	120 PSI
LB	4,536 KG	27580R22.5H		22.5X8.25	120 PSI

RECALL HAS BEEN COMPLETED IN ACCORDANCE WITH THE PRIOR NOTICE. THIS VEHICLE CONFORMS TO ALL APPLICABLE FEDERAL SAFETY STANDARDS IN EFFECT ON THE DATE OF MANUFACTURE.

Correct Tire Load Range

Vehicle Certification Labels are located both below the driver side window and inside the Owner InfoCase.

1. Cover the existing Vehicle Certification Label below the driver side window with the corrected label (from kit). See Photo C.



2. Cover the existing Vehicle Certification Label inside the Owner InfoCase with the corrected label (from kit). See Photo D.



After the new labels are installed, please complete the enclosed pre-addressed postage paid postcard and mail to Winnebago Industries®.